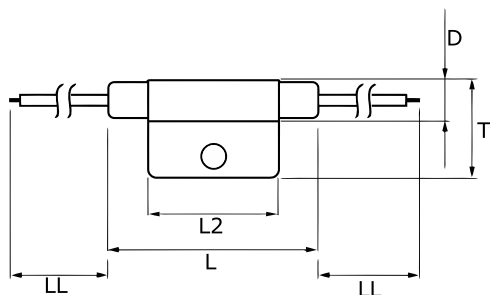


KEMET, TRS, Thermal Reed Switch, Axial, 2.5C Temperature Accuracy, High Reliability, High-Speed Response, Long Operational Life, Excellent Environmental Durability, High Temperature Accuracy, 60C, Break

**Dimensions**

D	8.2mm MAX
L	50mm MAX
L2	29mm MAX
T	20mm MAX
LL	200mm

Packaging Specifications

Packaging:	Rubberband Box
Packaging Quantity:	600
Weight:	8.5 g

General Information

Series:	TRS
Type:	Thermal Reed Switch
Style:	Axial
Description:	Thermal Reed Switch
Features:	High Reliability, High-Speed Response, Long Operational Life, Excellent Environmental Durability, High Temperature Accuracy
Lead:	Cables
RoHS:	Yes
Qualifications:	UL, CSA, VDE

Specifications

Switching Temperature:	60C +/-2.5C
Temperature Range:	-20/+130C
Contact Type:	Break
Voltage AC:	264 VAC MAX (Opening/Closing)
Current:	0.275 Amps MAX (Make/Break), 1 mAmps MIN (5VDC, Opening/ Closing)
Resistance:	150 mOhms MAX (Contact Resistance)
Max Opening/Closing Power:	60.5 W (AC/DC)
Max Opening/Closing Voltage:	264 V (AC)