

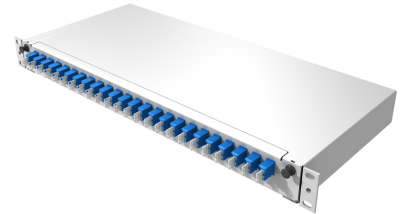
Fiberframe Lite

Description

Fiberframe Lite, 24 x LCD adaptor blue
 FL1-BLCUD-2400-SM-000-0000

Features

- Standard 19" 1U size
- Robust steel construction
- Telescopic drawer with tilt of 15°
- Multifunctional back plate
- Up to 48 fibers per 1U
- ACS splice cassette technology accepting up to 24 fibers per cassette
- Optional zero space cable management bar



Technical data

Mechanical data

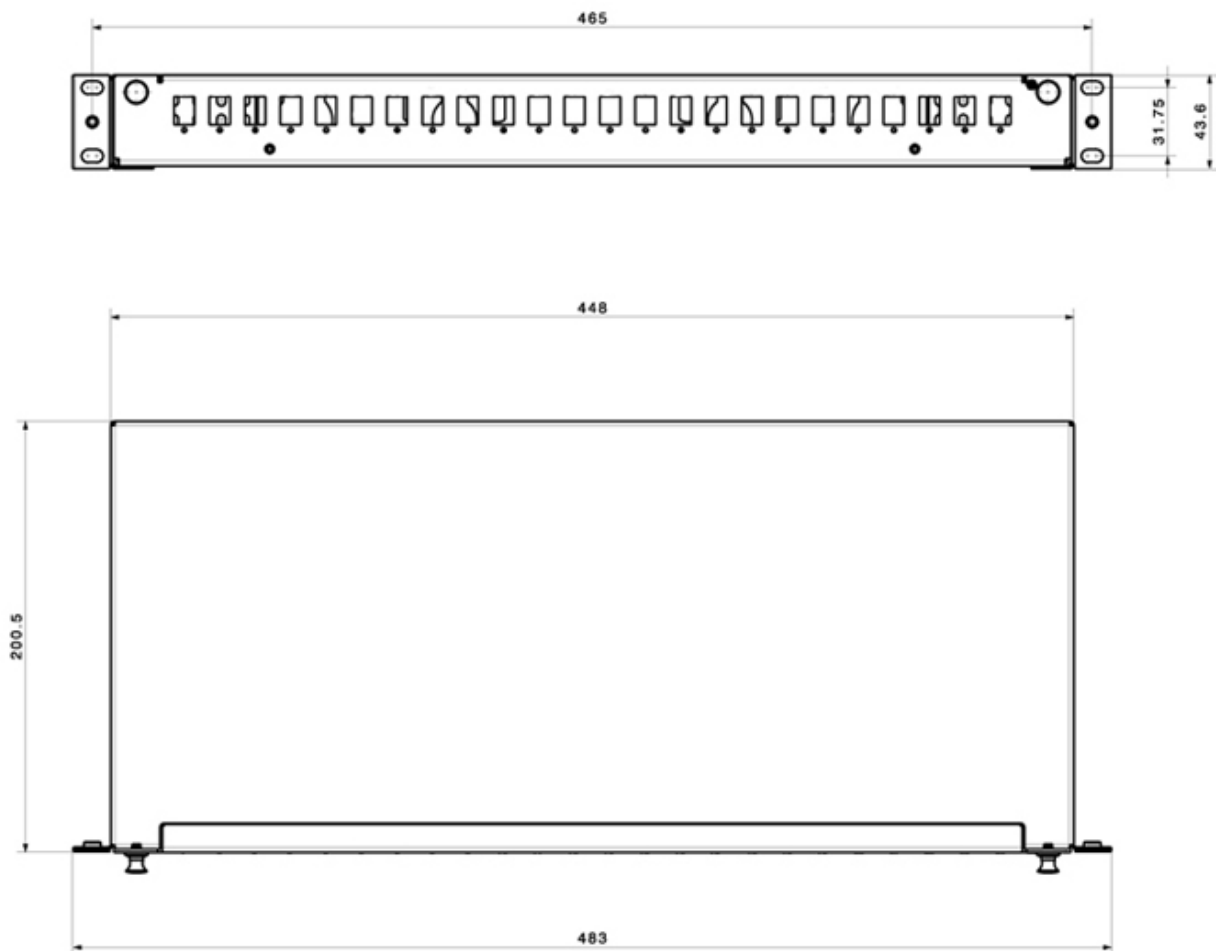
Characteristics	Values
Product family	Fiberframe
Suitable for	Patching
Dimension (Width x Length x Height) (mm)	448 x 200 x 44
Dimension (Width x Length x Height) (inch)	17.6 x 7.9 x 1.7
Weight (kg)	2.3
Weight (lbs)	5.1
Material module	powder coated steel
Colour module	light grey (RAL 7035)
Mounting type	Front mounting
Drawer Tilt (°)	15
Number of Adaptor front (pcs)	24
Adaptor type front	LC
Adaptor colour front	blue

Environmental data

Characteristics	Values
Resistance to impact	IK03
Ingress protection degree	IP20
Free of halogen	Yes
RoHS compliant	Yes
REACH compliant	Yes

Fiberframe Lite

Technical drawing



Ordering information

Description	Item number
Fiberframe Lite, 24 x LCD adaptor blue	85063226

Related Documents

Installation manual	DOC-0000711379
---------------------	----------------