

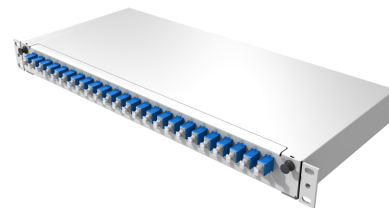
Fiberframe Lite

Description

Fiberframe Lite, 24 x SC adaptor blue, OS2, UPC, 24 x pigtails, no code
 FL1-BSCUS-2424-SM-100-0OS0

Features

- Standard 19" 1U size
- Robust steel construction
- Telescopic drawer with tilt of 15°
- Multifunctional back plate
- Up to 24 fibers per 1U
- ACS splice cassette technology accepting up to 24 fibers per cassette
- Optional zero space cable management bar



Technical data

Mechanical data

Characteristics	Values
Product family	Fiberframe
Suitable for	Splicing
Dimension (Width x Length x Height) (mm)	448 x 200 x 44
Dimension (Width x Length x Height) (inch)	17.6 x 7.9 x 1.7
Weight (kg)	2.4
Weight (lbs)	5.3
Material module	powder coated steel
Colour module	light grey (RAL 7035)
Number of cassettes (pcs)	1
Mounting type	Front mounting
Drawer Tilt (°)	15
Number of Adaptor front (pcs)	24
Adaptor type front	SC
Adaptor type front polishing	UPC
Adaptor colour front	blue
Colour code	NO CODE

Optical data

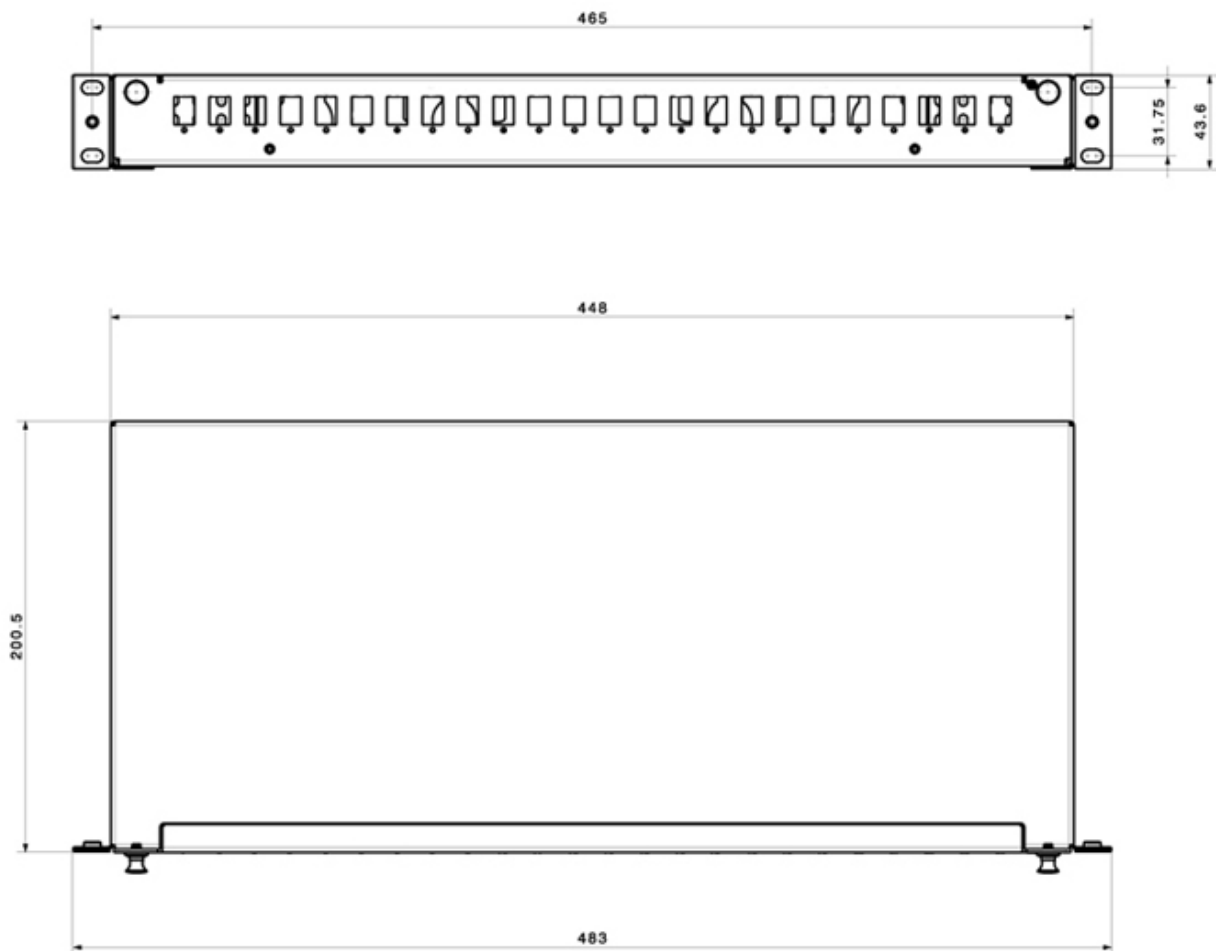
Characteristics	Values
Fiber type	Singlemode 9/125 µm OS2
Module insertion loss	Singlemode OS2: <=0.50 dB
Module return loss	Singlemode OS2 PC: >=50dB

Environmental data

Characteristics	Values
Resistance to impact	IK03
Ingress protection degree	IP20
Free of halogen	Yes
RoHS compliant	Yes
REACH compliant	Yes

Fiberframe Lite

Technical drawing



Ordering information

Description	Item number
Fiberframe Lite, 24 x SC adaptor blue, OS2, UPC, 24 x pigtails, no code	85064745

Related Documents

Installation manual	DOC-0000711379
---------------------	----------------