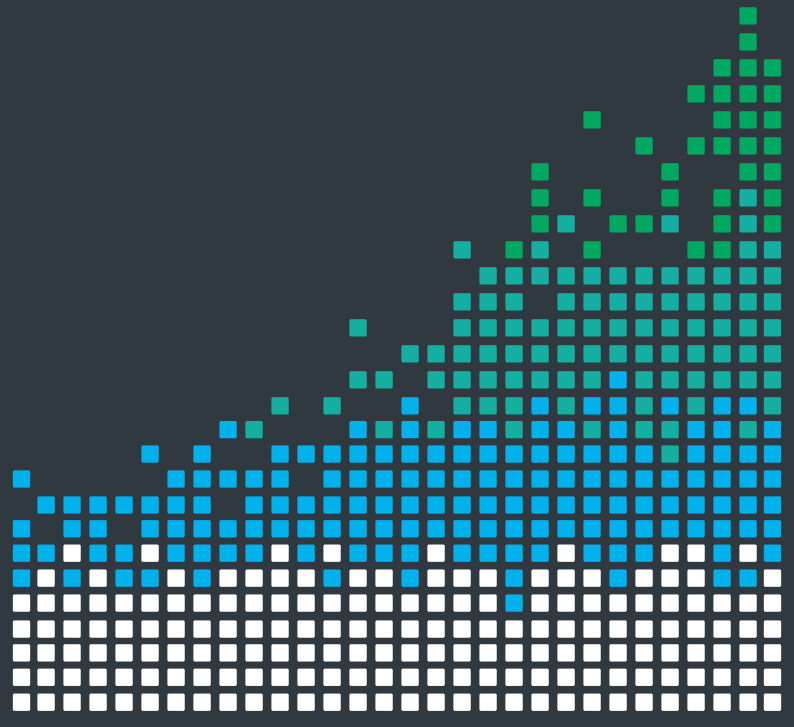
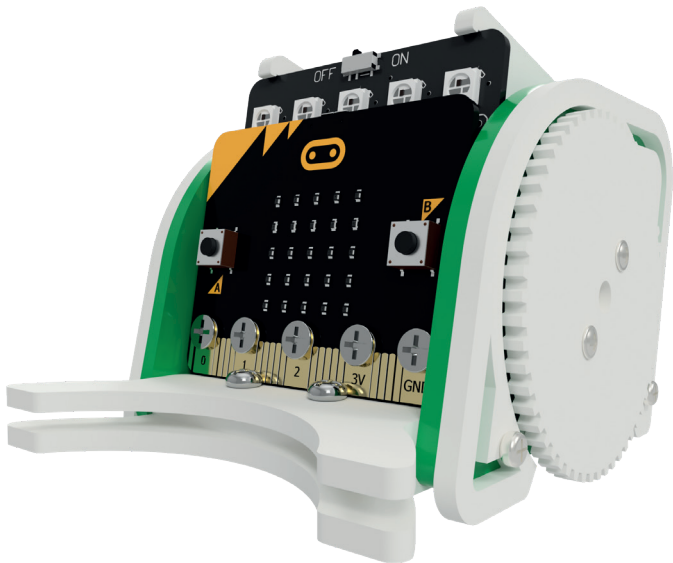


PLAY FOOTBALL WITH THE

:MOVE Mini BUMPER ADD-ON



BUILD INSTRUCTIONS



1

First, remove the lasercut panel from the front of the :MOVE mini.



2

Using the screws provided, screw the two panels either side of the :MOVE mini baseplate. The screws should pass through the rectangular cut-out.



NOTE: The screws self tap into the holes on the lower panel.



TOOLS REQUIRED

- Small Phillips Screwdriver



STOCK CODE

5624-BM





WARNING : Contents may inspire creativity

T: 0845 8380781

W: www.kitronik.co.uk

E: support@kitronik.co.uk

 Designed & manufactured
in the UK by 



[kitronik.co.uk/twitter](https://twitter.com/kitronik)



[kitronik.co.uk/facebook](https://www.facebook.com/kitronik)



[kitronik.co.uk/youtube](https://www.youtube.com/kitronik)



[kitronik.co.uk/google](https://www.google.com/kitronik)



For more information on RoHS and CE please visit kitronik.co.uk/rohs-ce. Children assembling this product should be supervised by a competent adult. The product contains small parts so should be kept out of reach of children under 3 years old.