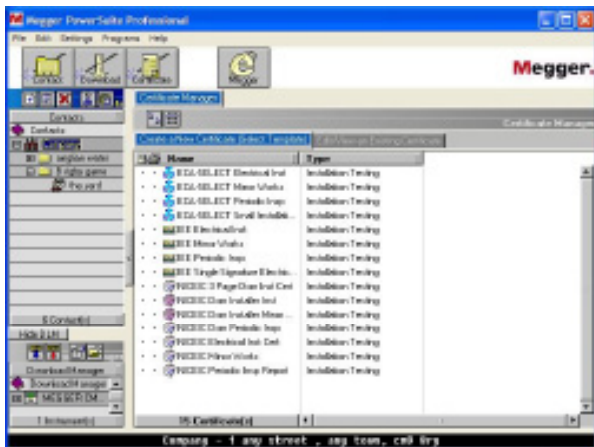


# Powersuite® Pro-LITE

## Electrical test and PAT software



- **Electrical certification software**
- **Easy, fast and flexible**
- **Work in real certificates and forms**
- **Download results from Megger testers**
- **Print on plain paper or pre-printed stationary**
- **The essential IEE, NICEIC, ECA, SELECT and ELECSEA certification supported.**
- **Contact Manager to organise your customers**

### DESCRIPTION

Lite is the simplest package in the Professional range. It offers the ideal solution as a cost effective entry into electrical test software, essential for managing electrical and PAT test results. The package can be upgraded as your requirements expand.

Combining both PAT and Electrical Installation certificates in the one package, it is designed specifically for the electrical test engineer working on electrical installations and PAT testing.

### Advantages

The overall layout and operation of PowerSuite Professional offers the following:

- Working in real certificate layouts, not spreadsheets.
  - Data is entered directly onto a certificate form, not in a spreadsheet.
- High quality results
  - Printed certificates are easy to read with no ambiguous writing or mistakes.
- Wizard driven operations, toolbars and drop-down menus
  - Greater flexibility and productivity.
- Client and location manager
  - Keeps your customer details and locations for simple importing to certificates
- Download test results or direct data entry to certificates
  - Import data from a Megger test instrument or use as a form filler.

- Integrated Bluetooth or Bluetooth adapter (for Megger MFT1553/MFT1730 real time result capture)
- Simplified download data management
  - With a built in download manager, downloads can be saved until ready to import into the required certificate. All downloads are date and time stamped to prevent overwriting.
- Easy certificate generation.
  - Simply click the Certificate Wizard to create completed or blank certificates
- Customise certificates
  - Your company logo can replace the Megger logo on relevant certificates.
- Visibility of clients, locations, certificates and downloads files in the same view.
  - Data can be moved using drag and drop.

### PowerSuite Professional Lite for portable appliance testing

Ideal for the portable appliance-testing engineer. This package provides the perfect solution to producing test documentation.

The large number of tests performed daily in portable appliance testing generates a great deal of paperwork. Hand completed test results are time consuming and prone to errors.

The perfect solution is the testing of appliances on a tester capable of logging all the asset details and test results. Download these to a PC running Lite for PATS. This infor-

mation is imported directly into the certificate, which can be printed and delivered to the customer.

Alternatively, Lite software can be used as a form filler, displaying a blank certificate that can be completed manually and then printed.

The Lite package accepts test data from all the Megger Portable Appliance Testers that have the facility to store test results.

These results are downloaded to a computer from which the user can produce high quality certificates. Your own company logo can be added to any of the Megger certificate templates.

**Features of Lite**

- Simple wizard operations – quick to learn and use.
- Download test results directly to certificates – no complicated file handling.
- Certificate header page – you can automatically generate a header page for your certificates.
- Certificate Manager – provides a range of certificate formats.
- Contact Manager – keeps details of all your clients and locations. All certificates are stored under the relevant locations.
- Download Manager – provides direct access to downloading instruments and raw data prior to importing into a certificate.
- Fully upgradeable – easily upgraded to any higher package.

**PowerSuite Professional Lite for electrical installation testing**

Taking your pre-printed certificate or a photocopy onsite and hand filling the results is not only tiresome but can also be time consuming when rewriting or transferring to a spreadsheet.

With the Pro-Lite you see your certificate on screen as it should look when printed. There is also the benefit of taking a laptop or mobile device (see Ultra Mobile) onsite and completing your certificate as you test.

With the new Bluetooth technology available with the MFT1553/MFT1730 you can send the results directly from your test instrument into your certificate.

Simply add the clients details in the Contact Manager, open a certificate and enter the relevant test results. Test certificates can be printed directly or saved under the clients details for future reference.

It will also accept results from Megger downloading electrical testing instruments, such as the MIT330, LTW335, RCDT330, CM500.

**Advantages of PowerSuite Professional Lite**

- Ideal for the new BS7671 Regulations.
- Certificates are displayed on screen – no complicated looking spreadsheets.
- Accepts data from all Megger downloading electrical test instruments.
- Supplied with the essential certificates required for electrical testing.
- NICEIC, ECA, SELECT, IEE and ELECSA electronic certificates supported.
- Can be used as remote (field) software for other PowerSuite Professional Packages.
- Integrated Bluetooth or Bluetooth adapter (for Megger MFT1553/MFT1730 real time result capture)

**ORDERING INFORMATION**

Item	Order Code
PowerSuite Professional Lite	1000-631
Additional Licence	6111-706

**MEGGER SOFTWARE**  
Archcliffe Road Dover  
CT17 9EN England  
T +44 (0) 1304 502106  
F +44 (0) 1304 207342  
E powersuite@megger.com

**OTHER TECHNICAL SALES OFFICES**  
Norristown USA, Sydney AUSTRALIA, Toronto CANADA, Trappes FRANCE, Dubai UAE, Mumbai INDIA, Durban SOUTH AFRICA, Conjure THAILAND, Täby SWEDEN, Oberursel GERMANY, Aargau SWITZERLAND

Registered to ISO 9001:2008 Cert. Q 09250  
Registered to ISO 14001:2004 Cert. EMS 61597  
**PowerSuite\_Pro-Lite\_DS\_en\_V04**

[www.megger.com](http://www.megger.com)  
Megger is a registered trademark