

AUTOMATIC DIGITAL CAPACITOR TESTER – CAP1500

FEATURES:

- Wide measurement range
- Uses precision dual slope A/D converter
- Alligator clip leads for in-circuit testing
- Zero adjust switch and low battery indicator
- 3-1/2-digit (1999 count) LCD
- Fuse-protected from overloads

SPECIFICATIONS:

- ◆ Measurement Range: 0 to 20mF over 9 ranges (0 to 200pF/2000pF/20nF/200nF/2μF/20μF/200μF/2000μF/20mF)
- ◆ Measurement Accuracy: ±(0.5% + 1 digit) or better below 20μF; ±(5% + 5 digits) or better above 20μF
- ◆ Sampling Time: 0.4 seconds
- ◆ Operating Temperature: 32° to 122°F (0° to 50°C) @ <75%RH

- ◆ Dimensions: 5.3 x 2.8 x 1.4 in. (135 x 71 x 36mm)
- ◆ Weight: 7.1 oz. (201g)
- ◆ Power Source: 1 “9V” battery (included)

INCLUDES:

- Alligator Clip Test Leads
- Soft Case
- Battery
- User's Manual
- 1-Year Limited Warranty

UPC	NO.
50192 4	CAP1500



CAP1500

3 WIRE CIRCUIT ANALYZER – CT300 3 WIRE RECEPTACLE TESTER WITH GFCI – GF1302

Ideal for checking wall outlets.

FEATURES:

- Detects faulty wiring in 3-wire receptacles (CT300)
- Detects faulty wiring in 3-wire receptacles with ground fault circuit interrupters (GF1302)

- Different combinations of three lights indicate six different fault types
- Designed for 120VAC circuits
- UL listed
- 1-Year Limited Warranty

UPC	NO.
01359 5	CT300
51067 4	GF1302



CT300

GF1302

BRIGHT RED LED SCREWDRIVER/CONTINUITY TESTER – ST600LED

Ideal for checking for continuity and voltage.

FEATURES:

- Bright red LED indicates hot side and continuity
- Continuity and polarity checks
- Microwave leakage test
- Checks fuses and bulbs
- Drop-resistant to 10 ft.
- 1-Year limited warranty

SPECIFICATIONS:

- ◆ AC Voltage Test Range: 70 to 250V (contact method); 70 to 600V (non-contact method)
- ◆ DC Voltage Test Range: 0 to 250V
- ◆ Continuity Test Range: 0 to 50MΩ
- ◆ Polarity Test Range: 1.5 to 36VDC
- ◆ Microwave Leakage Test: >5mW/cm²
- ◆ Power Source: 1 “LR44” battery (included)

UPC	NO.
51115 2	ST600LED



ST600LED

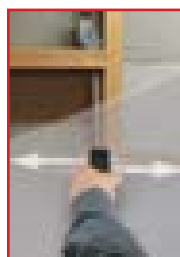
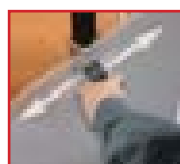
DIGITAL 3-IN-1 LCD STUD/VOLTAGE/METAL DETECTOR – MSV350D

Ideal for locating studs, pipes, wires carrying voltage and hidden metal.

FEATURES:

- Uses LCD scanning indicators and buzzer to indicate direction and position of stud, batten, metal object or wiring
- Detects/distinguishes between metal pipes/tubes and hot wires with variable sensitivity
- Also distinguishes between battens and studs
- Simultaneously detects studs and metal/wiring
- Needs no probe
- Battery charge indicator
- Auto power off

UPC	NO.
012175 8	MSV350D



SPECIFICATIONS:

- ◆ Dimensions: 6.1 x 2.6 x 1.3 in. (155 x 65 x 32mm)
- ◆ Weight: 6.5 oz. (185g)
- ◆ Power Source: 1 “9V” battery (not included)
- ◆ Warranty: 1-year (limited)

INCLUDES:

- User's Manual
- 1-Year Limited Warranty



MSV350D