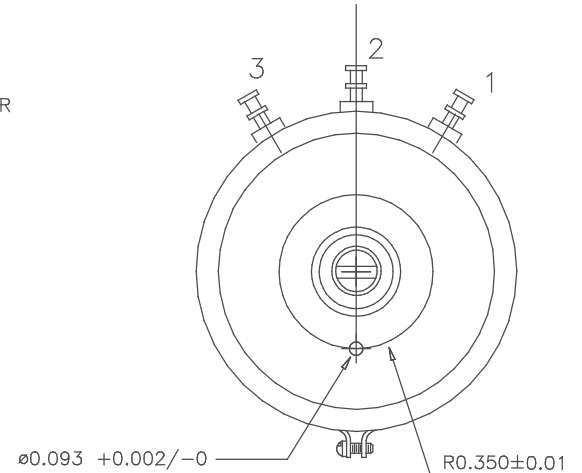
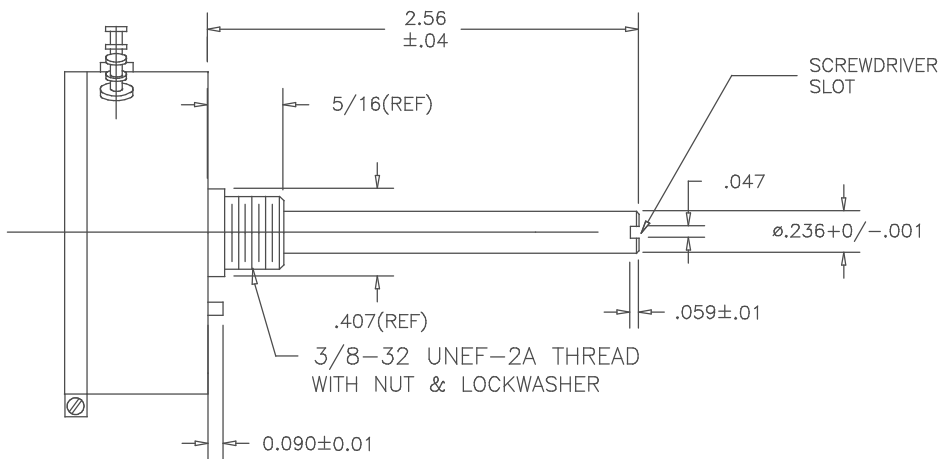


THIS DOCUMENT CONTAINS PROPRIETARY DATA OF POLARIS INDUSTRIAL ENTERPRISES, INC. NO DISCLOSURE, REPRODUCTION, OR USE OF ANY PART THERE OF MAY BE MADE EXCEPT BY WRITTEN PERMISSION.

REV.	BY	DATE	APPRVL.	P/N	SP40B-3341



NOTES:

1. SHAFT TOTAL LENGTH 2.56 FMS.
2. SCREWDRIVER SLOT AT END OF SHAFT
3. MECHANICAL ANGLE CONTINUOUS (360°)
4. INDEPENDENT LINEARITY TO BE .1%
5. NON-TURN PIN .093 DIA BY .090 HIGH ON A .350 RADIUS
6. MEETS ALL OF THE RoHS DIRECTIVE REQUIREMENTS.
7. BUSHING NUT TORQUE NOT TO EXCEED 10 LBS.INCH
8. VIBRATION PROOF HYPER CONTACT WIPER

ALL OTHER SPECIFICATIONS ARE THE SAME
AS THE STANDARD MODEL SP40B

SCALE	DATE: 2-14-11
	BY AT
NONE	APPRV'D
CODE	IDENT: 19477



TITLE
SINGLE TURN
POTENTIOMETER

PART NO.
SP40B-3341