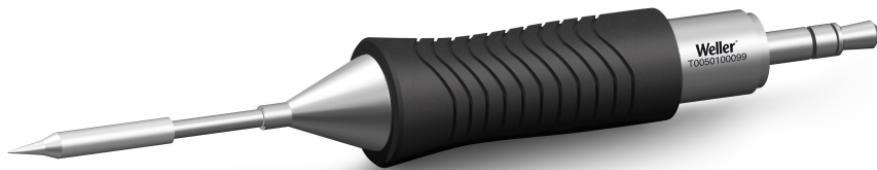


# RTM 002 C L

Product no.: T0050100099



## Benefits

- › Widest range of geometrics and sizes: Covers all standard applications. One tool meets all operational needs.
- › Active tip technology: Fastest heat-up and recovery time, sensor close to the solder tip, excellent heat transfer. No downtime, continuing workflow, excellent results
- › Digital tool for data storage: Motion activated usage sensor for energy control and data storage
- › Patented tip & grip design: Only soldering tip on the market which can be changed without a tool. 20% faster change than leading competitors.
- › One intelligent platform: One station for all active tips & tools. WX platform meets all operational hand soldering needs.

**Technical Data**

Tip shape	---
Tip type	HM
Width in mm	0.2
Width in inches	0.008
Thickness in mm	---
Thickness in inches	---
Length mm	18.7
Length inches	7.36
Power	40 W
Packaging unit	1