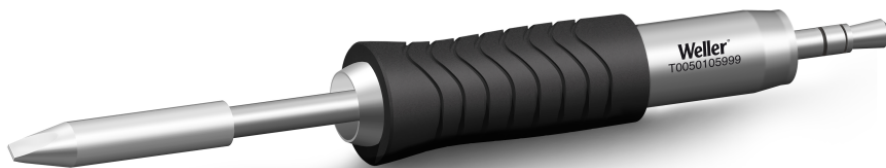


# RTU 022 S MS

Product no.: T0050105999



## Benefits

- › Patented Thermal Core Technology: Optimized thermal heat transfer to the solder joint. Consistent soldering for reduced rework.
- › MIL-SPC / IPC standard: Reduces risk of damage to sensitive components and workpieces. No rework, lower total cost of ownership
- › Active tip technology: Fastest heat-up and recovery time, sensor close to the solder tip, excellent heat transfer. No downtime, continuing workflow, excellent results
- › Digital tool for data storage: Motion activated usage sensor for energy control and data storage
- › Patented tip & grip design: Only soldering tip on the market which can be changed without a tool. 20% faster change than leading competitors.
- › One intelligent platform: One station for all active tips & tools. WX platform meets all operational hand soldering needs.

**Technical Data**

Tip shape	Chisel shape
Tip type	MS
Width in mm	2.2
Width in inches	0.087
Thickness in mm	0.6
Thickness in inches	0.024
Length mm	28
Length inches	1.102
Power	150 W
Packaging unit	1