

# BMXDAI0805

discrete input module M340 - 8 inputs - 200...240 V AC



## Main

|                           |  |
|---------------------------|--|
| Range of product          | Modicon X80  |
| Product or component type | Discrete input module  |
| Discrete input number     | 8  |
| Discrete input type       | Isolated   |
| Input type                | Capacitive   |
| Discrete input voltage    | 200...240 V AC   |
| Discrete input current    | 10.4 mA  |
| Input compatibility       | With 2-wire/3-wire proximity sensors conforming to IEC 60947-5-2 |

## Complementary

|                                |  |
|--------------------------------|--|
| Network frequency              | 50/60 Hz   |
| Network frequency limits       | 47...63 Hz   |
| Sensor power supply            | 170...264 V  |
| Voltage state 1 guaranteed     | $\geq 159$ V   |
| Current state 1 guaranteed     | $\geq 6$ mA  |
| Voltage state 0 guaranteed     | $\leq 40$ V  |
| Current state 0 guaranteed     | $\leq 4$ mA  |
| Input impedance                | 21000 Ohm  |
| Insulation resistance          | $> 10$ MOhm 500 V DC   |
| Power dissipation in W         | $\leq 3.6$ W   |
| AC activation filtering time   | 10 ms  |
| AC deactivation filtering time | 20 ms  |
| Response time on output        | 5...15 ms deactivation<br>20...50 ms activation  |
| Typical current consumption    | 76 mA at 3.3 V DC<br>93.6 mA at 24 V DC  |
| Current consumption            | $\leq 107$ mA at 3.3 V DC<br>$\leq 154.8$ mA at 24 V DC  |
| Protection type                | 1 external fuse per group of channel 0.5 A fast blow   |
| Voltage detection threshold    | $> 164$ V DC sensor OK<br>$< 80$ V DC sensor fault   |
| Status LED                     | 1 LED red for module error (ERR)<br>1 LED green for module operating (RUN)<br>1 LED per channel green for channel diagnostic<br>1 LED red for module I/O |
| Product weight                 | 0.12 kg  |

## Environment

|                         |   |
|-------------------------|---|
| directives              | 2012/19/EU - WEEE directive<br>2014/30/EU - electromagnetic compatibility<br>2014/35/EU - low voltage directive |
| IP degree of protection | IP20  |
| product certifications  | CE<br>CSA<br>UL<br>RCM<br>Merchant Navy<br>EAC  |

The information provided in this documentation contains general descriptions and/or technical characteristics of the products contained herein. This documentation is not intended as a substitute for and is not to be used for determining suitability or reliability of these products for specific user applications. It is the duty of any such user or integrator to perform the appropriate and complete risk analysis, evaluation and testing of the products with respect to the relevant specific application or use thereof. Neither Schneider Electric Industries SAS nor any of its affiliates or subsidiaries shall be responsible or liable for misuse of the information contained herein.

|                                       |  |
|---------------------------------------|--|
| standards                             | EN 61000-6-2<br>EN 61000-6-4<br>EN 61131-2<br>EN 61010-2-201 |
| dielectric strength                   | 1500 V AC at 50/60 Hz 1 min                                  |
| vibration resistance                  | 3 gn   |
| shock resistance                      | 30 gn  |
| ambient air temperature for storage   | -40...85 °C  |
| ambient air temperature for operation | 0...60 °C  |
| relative humidity                     | 5...95 % without condensation 55 °C                          |
| protective treatment                  | TC   |
| operating altitude                    | 0...2000 m<br>2000...5000 m (with derating factor)           |

## Offer Sustainability

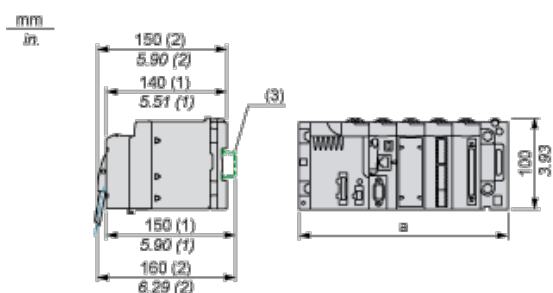
|                                  |   |
|----------------------------------|---|
| Sustainable offer status         | Green Premium product   |
| RoHS (date code: YYWW)           | Compliant - since 0901 - Schneider Electric declaration of conformity |
| REACH                            | Reference not containing SVHC above the threshold                     |
| Product environmental profile    | Available   |
| Product end of life instructions | Available   |

## Contractual warranty

|                 |           |
|-----------------|-----------|
| Warranty period | 18 months |
|-----------------|-----------|

## Modules Mounted on Racks

### Dimensions

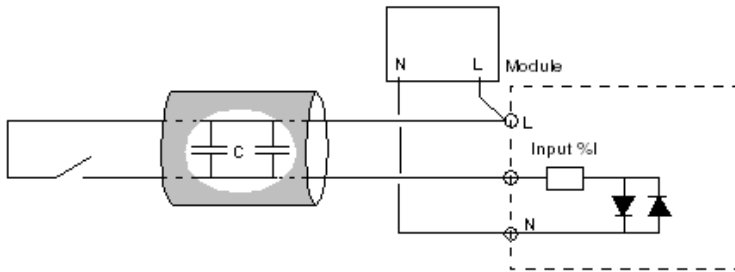


- (1) With removable terminal block (cage, screw or spring).
- (2) With FCN connector.
- (3) On AM1 ED rail: 35 mm wide, 15 mm deep. Only possible with BMXXBP0400/0400H/0600/0600H/0800/0800H rack.

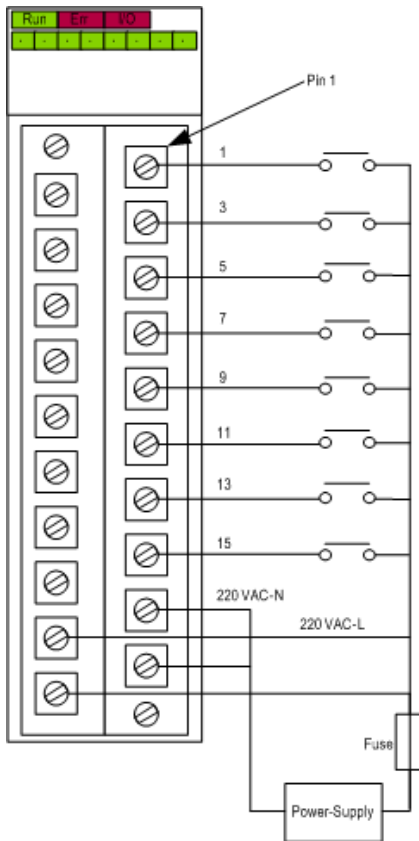
| Rack references            | a in mm | a in in. |
|----------------------------|---------|----------|
| BMXXBP0400 and BMXXBP0400H | 242.4   | 09.54    |
| BMXXBP0600 and BMXXBP0600H | 307.6   | 12.11    |
| BMXXBP0800 and BMXXBP0800H | 372.8   | 14.68    |
| BMXXBP1200 and BMXXBP1200H | 503.2   | 19.81    |

## Connecting the Module

### Input Circuit Diagram



**Module Connection**



power 200...240 VAC  
supply

fuse fast blow fuse of 0.5 A