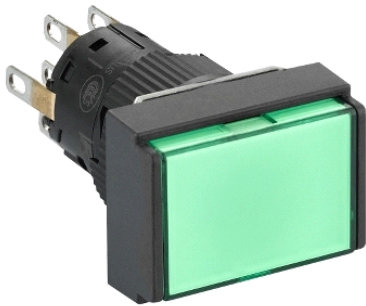


XB6EDF3J2P

rectangle green illumin pushbutton Ø16-flush
pushtorelease 12 VDCpolarised 2CO



Main

Range of product	Harmony XB6E
Product or component type	Illuminated monolithic push-button
Device short name	XB6E
Bezel material	Plastic
Mounting diameter	16 mm
Sale per indivisible quantity	5
Shape of signaling unit head	Rectangular
Type of operator	Latching
Operator profile	Green flush
Contacts type and composition	2 C/O
Contact operation	Snap action
Connections - terminals	Soldered connectors Faston connectors : 2.8 x 0.5 mm
Contacts material	Gold-flashed silver
Light source	Integral LED
[Us] rated supply voltage	12 V DC polarised

Complementary

Height	18 mm
Width	24 mm
Depth	40 mm
Terminals description ISO n°1	(13-14-11-12)OF (23-24-21-22)OF
Product weight	0.006 kg
Overvoltage category	II conforming to IEC 60536
Operating position	Any position
Marking	CE
Operating force	1.3 N (C/O changing electrical state)
Mechanical durability	250000 cycles
Short-circuit protection	3 A by gG cartridge fuse
[Ith] conventional free air thermal current	3 A
[Ui] rated insulation voltage	250 V (degree of pollution: 2) conforming to IEC 60947-1
[Uimp] rated impulse withstand voltage	2.5 kV conforming to IEC 60947-1
Electrical durability	50000 cycles DC-12, 1 A - 30 V conforming to IEC 60947-5-1 appendix C 50000 cycles AC-12, 0.5 A - 125 V conforming to IEC 60947-5-1 appendix C 50000 cycles AC-12, 0.5 A - 250 V conforming to IEC 60947-5-1 appendix C
Electrical reliability	$\lambda = 10\text{exp}(-8)$ at 5 V and 1 mA with confidence level of 90 % conforming to IEC 60947-5-4
Signalling type	Steady
Current consumption	20 mA
Service life	50000 h

Environment

ambient air temperature for storage	-40...70 °C
ambient air temperature for operation	-10...55 °C
IP degree of protection	IP65 conforming to IEC 60529
standards	IEC 60947-1 IEC 60947-5-1 JIS C 4520

The information provided in this documentation contains general descriptions and/or technical characteristics of the products contained herein. This documentation is not intended as a substitute for and is not to be used for determining suitability or reliability of these products for specific user applications. It is the duty of any such user or integrator to perform the appropriate and complete risk analysis, evaluation and testing of the products with respect to the relevant specific application or use thereof. Neither Schneider Electric Industries SAS nor any of its affiliates or subsidiaries shall be responsible or liable for misuse of the information contained herein.

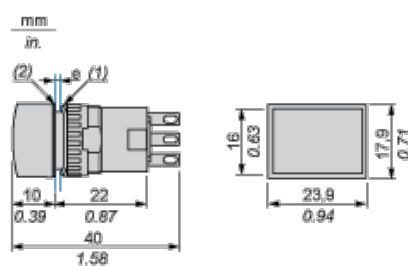
product certifications	CCC CURus
vibration resistance	1 mm (5...55 Hz) conforming to IEC 60068-2-6 9 gn (5...55 Hz) conforming to IEC 60068-2-6
shock resistance	20 gn (duration = 11 ms) for half sine wave acceleration conforming to IEC 60068-2-27
electromagnetic compatibility	Electrostatic discharge immunity test 8 kV - test level conforming to IEC 61000-4-2

Contractual warranty

Warranty period	18 months
-----------------	-----------

Pushbutton

Rectangular Head



- (1) Anti-rotation plate (thickness: 0.6 mm / 0.02 in.)
- (2) Seal (thickness: 0.5 mm / 0.01 in.)
- e panel thickness: 0.5 mm (0.01 in.) ≤ e ≤ 6 mm (0.24 in.)

Panel Cut-Out and Mounting

Rectangular Head

