

KAXZ1S143

cam switch operating head - metal bezel Ø 28.5 -
Ronis520 - 45 °switching angle



Main

Range of product	Harmony Series K
Product or component type	Cam switch operating head
Component name	KAX
Product compatibility	Front mounting bodies 12 and 20 A by Ø 22 mm hole
Cam switch head type	With bezel Ø 28.5 mm, metal
Type of operator	Key Ronis 520
Rotary handle padlocking	Without
Presentation of legend	With mat black legend
Switching angle	45 °

Complementary

Mechanical durability	1000000 cycles
Product weight	0.065 kg

Environment

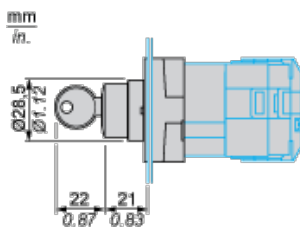
protective treatment	TC
ambient air temperature for operation	-25...55 °C
ambient air temperature for storage	-40...70 °C
shock resistance	30 gn conforming to IEC 68-2-27
vibration resistance	5 gn, 10...150 Hz conforming to IEC 68-2-6
IP degree of protection	IP65 conforming to IEC 529 IP65 conforming to NF C 20-010

Contractual warranty

Warranty period	18 months
-----------------	-----------

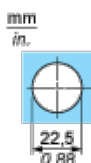
Operating Head

For Ø 22 mm/0.87 in. Hole, Front Mounting Body



Operating Head

Panel Cut-out



The information provided in this documentation contains general descriptions and/or technical characteristics of the performance of the products contained herein. This documentation is not intended as a substitute for and is not to be used for determining suitability or reliability of these products for specific user applications. It is the duty of any such user or integrator to perform the appropriate and complete risk analysis, evaluation and testing of the products with respect to the relevant specific application or use thereof. Neither Schneider Electric Industries SAS nor any of its affiliates or subsidiaries shall be responsible or liable for misuse of the information contained herein.