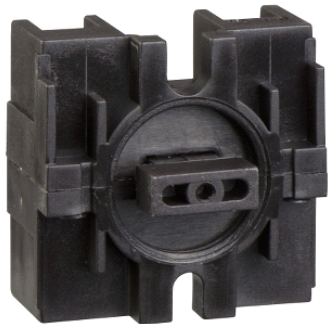


XESB1011
PENDANT STATION CONTACT - 600V AC - 10A -
XE



Main

Product or component type	Controllers separate parts
Accessory / separate part category	Control accessory
Product specific application	Heavy hoisting applications Medium hoisting applications
Product compatibility	XKD XKM
Accessory / separate part type	Contact at lever base

Complementary

Locking position	In the center
Interlocking type	Electrical
Contact operation	Snap action
Product weight	0.03 kg

Environment

Contractual warranty

Warranty period	18 months
-----------------	-----------

The information provided in this documentation contains general descriptions and/or technical characteristics of the performance of the products contained herein. This documentation is not intended as a substitute for and is not to be used for determining suitability or reliability of these products for specific user applications. It is the duty of any such user or integrator to perform the appropriate and complete risk analysis, evaluation and testing of the products with respect to the relevant specific application or use thereof. Neither Schneider Electric Industries SAS nor any of its affiliates or subsidiaries shall be responsible or liable for misuse of the information contained herein.