

Main

| | |
|------------------------------------|----------------|
| Range of product | Preventa XY2 |
| Accessory / separate part type | Tensioner |
| Accessory / separate part category | Separate parts |

Complementary

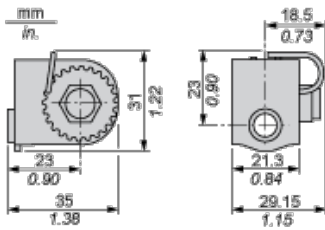
| | |
|---------------------------------------|---------------------------------|
| Product compatibility | XY2CJ |
| Accessory / separate part destination | Emergency stop rope pull switch |
| Product weight | 0.051 kg |

Environment

Offer Sustainability

| | |
|--------------------------|---------------------------|
| Sustainable offer status | Not Green Premium product |
|--------------------------|---------------------------|

Dimensions



The information provided in this documentation contains general descriptions and/or technical characteristics of the performance of the products contained herein. This documentation is not intended as a substitute for and is not to be used for determining suitability or reliability of these products for specific user applications. It is the duty of any such user or integrator to perform the appropriate and complete risk analysis, evaluation and testing of the products with respect to the relevant specific application or use thereof. Neither Schneider Electric Industries SAS nor any of its affiliates or subsidiaries shall be responsible or liable for misuse of the information contained herein.