

Milwaukee®

Nothing but **HEAVY DUTY.**®

M12 SYSTEM™ **M18** SYSTEM™

2017 CORDLESS CATALOG

Milwaukee®

THE WORLD LEADER IN CORDLESS INNOVATION

M12
SYSTEM

M18
SYSTEM

DEDICATION TO THE TRADES

Since the company began in 1924, Milwaukee Tool has led the industry in both durability and performance. With an unwavering commitment to the trades, MILWAUKEE® continues to lead with a focus on providing innovative, cordless, trade-specific solutions. MILWAUKEE® is dedicated to delivering a steady stream of advanced solutions for the trades that offer increased productivity and unmatched durability.

GAME-CHANGING SOLUTIONS

At MILWAUKEE®, the phrase “good enough” doesn’t exist in our vocabulary. Our goal is to solve problems in ways that have never been done before. The result: tools that offer unmatched levels of performance, productivity and durability.



BUILT ON THE BEST FOUNDATION



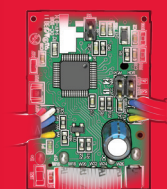
REDLITHIUM™ BATTERIES

They last longer, think faster and work harder than all other professional LITHIUM-ION batteries. Built to withstand even the harshest environments, REDLITHIUM™ batteries deliver more work over the life of the battery, no matter what the job.



MILWAUKEE® HIGH PERFORMANCE MOTORS

Highly advanced motor technology boosts efficiency, generating more power from a compact power source. That means the ultimate performance, durability and run-time comes in a smaller, lighter package.



REDLINK™ INTELLIGENCE

An advanced combination of hardware and software, REDLINK™ Intelligence enables full-circle communication between our batteries and tools, allowing for unmatched levels of performance, protection and productivity.

USER-DRIVEN INNOVATIONS

Our mission in cordless design is to introduce new solutions that make tradesmen more productive on the jobsite. Working side by side with users during the design and testing process gives us the ability to deliver game-changing solutions. Whether it's bringing cordless power to traditionally corded products and manual activities, or advances to fundamental tools, our drive to improve workplace productivity continues to help us push the envelope in innovation and design.

**M18™ FORCE LOGIC™
10 Ton Knockout Tool
THE EASIEST
WAY TO PUNCH**

The MILWAUKEE® Knockout System makes every step in the hole making process both faster and easier. The EXACT™ punches and dies are set up separately from the tool for extreme ease of use, utilizing a quick connect alignment system that allows the user to snap the tool onto the punches and dies without fighting against its weight, and pull the trigger to punch the hole with ease.



M18 FUEL™ 10" Dual Bevel Sliding Compound Miter Saw

5 3/4" VERTICAL **CORDED** **OVER 400 CUTS**
2x12 HORIZONTAL **PERFORMANCE** **ONE M18™ PACK**

The M18 FUEL™ 10" Dual Bevel Sliding Compound Miter Saw is designed to meet the demanding needs of professional carpenters and remodelers. Delivering greater capacity than many corded 10" sliding miter saws and corded cutting performance with the POWERSTATE™ Brushless Motor. The M18 FUEL™ 10" Dual Bevel Sliding Compound Miter Saw provides users a solution to replace their corded miter saws. The M18™ REDLITHIUM™ HIGH DEMAND™ 9.0 Battery pack delivers over 400 cuts per charge, making the saw capable of lasting an entire day on site with only one pack.

M18 FUEL™ 1-9/16" SDS Max Rotary Hammer

AS FAST AS CORDED **CORDED DURABILITY** **OVER 20 MIN OF CHIPPING**

The M18 FUEL™ 1-9/16" SDS Max Rotary Hammer is the first SDS Max 18V cordless solution. By utilizing proprietary M18 FUEL™ technologies, the 1-9/16" SDS Max rotary hammer is able to drill as fast as a corded SDS Max rotary hammer, deliver corded durability and provide over 20 minutes of continuous chipping.



M18 FUEL™ SUPER HAWG™ 1/2" Right Angle Drill

POWERS THROUGH 6" HOLES **OVER 150 2-9/16" HOLES PER CHARGE** **CORDLESS ROUGH-INS**

The first cordless tool of its kind, the M18 FUEL™ SUPER HAWG™ delivers the power and run-time to complete full cordless rough-ins. Optimized for large-diameter hole drilling, the M18 FUEL™ SUPER HAWG™ powers through 6" holes and has the ability to drill over (150) 2-9/16" holes per charge. The QUIK-LOK™ chuck provides quick, one-handed bit changes, eliminating downtime and increasing productivity.

M18 FUEL™ 1-1/2" Magnetic Drill

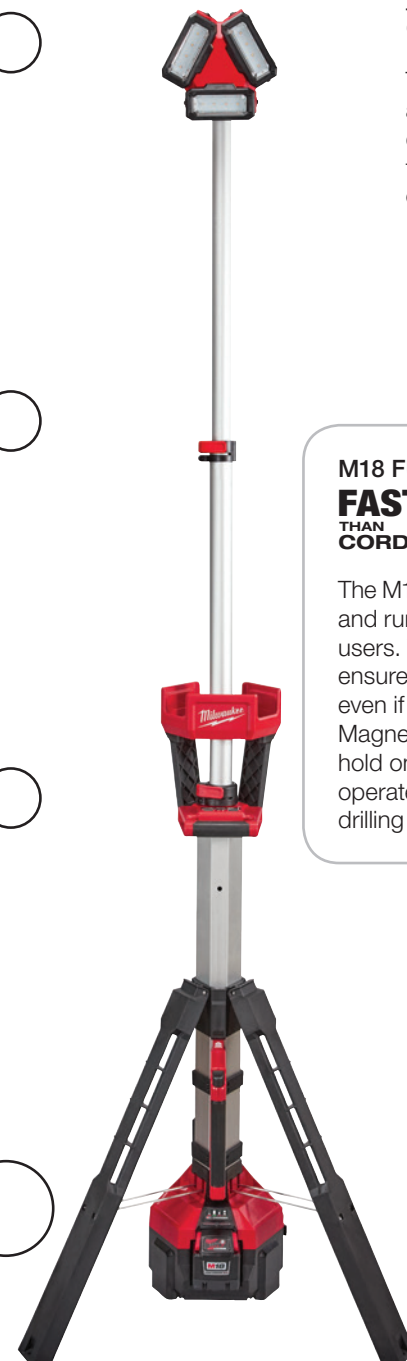
FASTER THAN CORDED **STRONGEST MAGNETIC HOLD ON 1/4" STEEL** **76 13/16" HOLES PER CHARGE**

The M18 FUEL™ Magnetic Drill delivers performance and run-time expected by corded magnetic drill users. This tool utilizes permanent magnets to ensure the magnetic base does not deactivate even if the battery is drained. The M18 FUEL™ Magnetic Drill also delivers the strongest magnetic hold on 1/4" steel and a magnetic base that operates without electricity, providing a safer drilling environment on 1/4" steel.



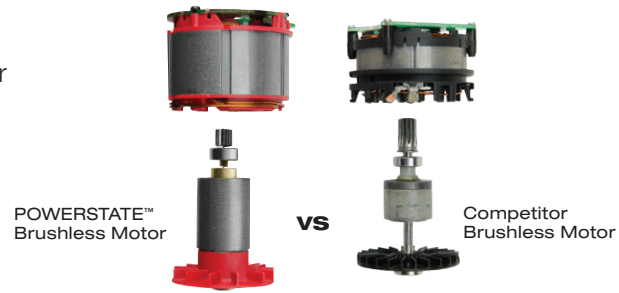
**M18™ ROCKET™ LED Tower Light/Charger
STAND UP. LIGHT UP. CHARGE UP.**

The M18™ ROCKET™ LED Tower Light/Charger is designed to deliver a lighting solution that ADAPTS, PERFORMS and SURVIVES professional use unlike any other portable work light. The light head can be extended from 4' – 7' to light overhead work or minimize shadows when casting light downward. The multidirectional light head gives users the ability to orient the three independently pivoting light heads to cast light in several directions. With an integrated AC plug, a user can plug in the light with a standard extension cord and charge any M18™ REDLITHIUM™ pack.

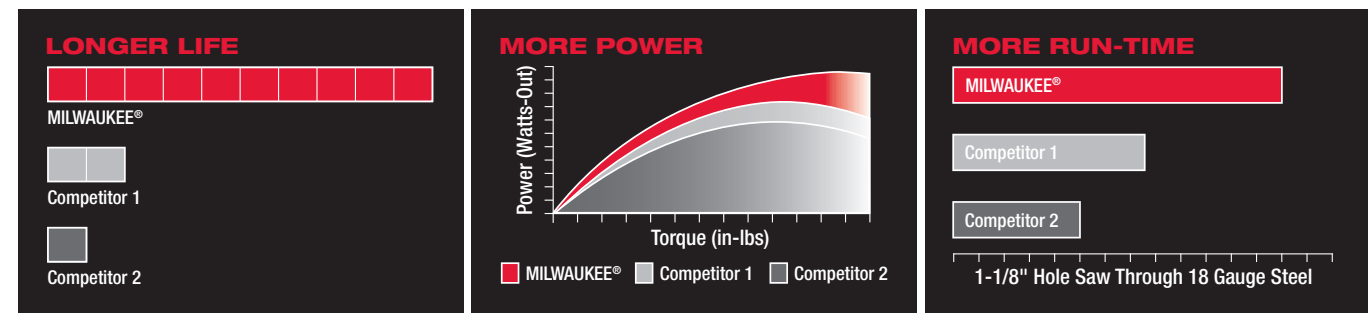


HIGH PERFORMANCE MOTORS

The MILWAUKEE® POWERSTATE™ Brushless Motor converts energy into power and torque more efficiently, resulting in superior application performance. The POWERSTATE™ Brushless Motor has nearly 4X the amount of power-generating components than the competitor's brushless motor. It also features higher-grade, rare-earth magnets and greater copper content.



LONGER MOTOR LIFE | MORE POWER | MORE RUN-TIME



REDLINK™ INTELLIGENCE

REDLINK™ Intelligence is an advanced combination of hardware and software that delivers the precise amount of power and performance necessary for the application, leaving your investment better protected and more productive.

UNMATCHED PROTECTION | OPTIMIZED PERFORMANCE | MORE PRODUCTIVITY

OVERLOAD PROTECTION



Best-in-class, advanced overload protection from MILWAUKEE® delivers maximum performance and protection.

OPTIMIZED PERFORMANCE



Every tool has its own unique performance profile. REDLINK™ Intelligence optimizes performance for each MILWAUKEE® tool, taking into account the specific hardware, its application and the loads placed on it.

MORE PRODUCTIVITY



All MILWAUKEE® cordless tools feature a fuel gauge. This allows tradesmen to monitor remaining battery power prior to starting a job.

REDLINK PLUS™ INTELLIGENCE

REDLINK PLUS™ delivers more advanced communication between the tool, battery and charger, resulting in peak application performance and protection. The upgraded electronics allow for new feature sets like DRIVE CONTROL™, which allows tradesmen to go from precision work to maximum performance with the push of a button.

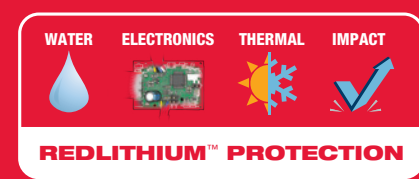


Proprietary 4-Mode DRIVE CONTROL™

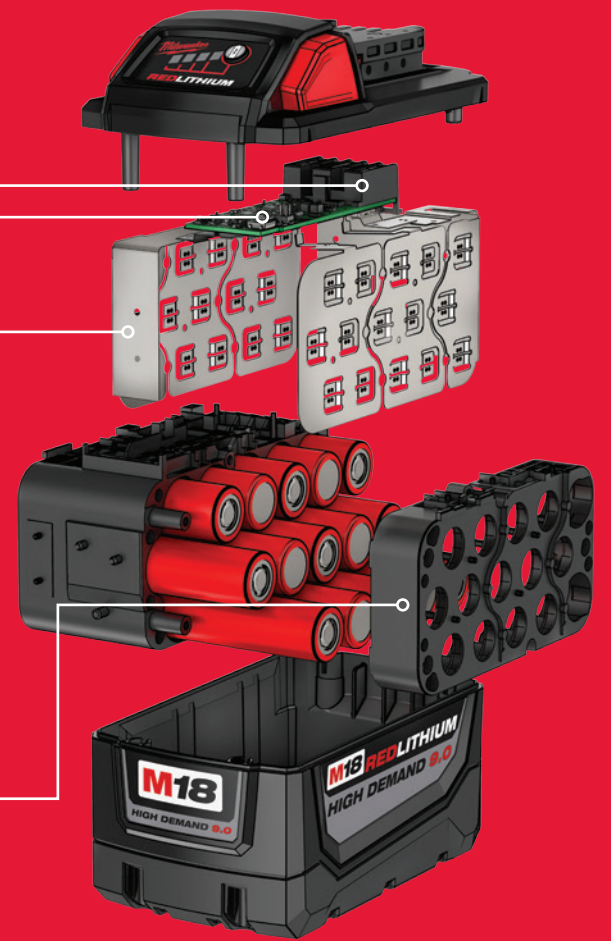
SHATTERING CORDLESS BATTERY TECHNOLOGY EXPECTATIONS

Since introducing the world's first LITHIUM-ION cordless system in 2005, MILWAUKEE® has continued to lead the industry in LITHIUM-ION technology and patents. MILWAUKEE's focus on LITHIUM-ION continually drives the company ahead of the competition to deliver the best battery systems in the industry. The exclusive integration of chemistry, pack design and circuitry combines for superior output in the harshest environments.

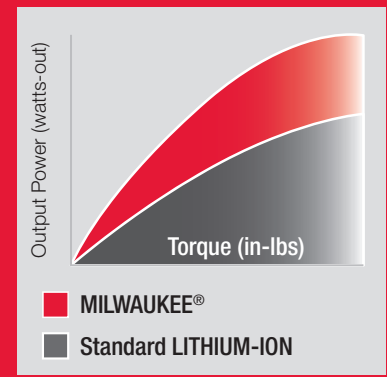
MORE POWER | MORE RUN-TIME | LONGER BATTERY LIFE



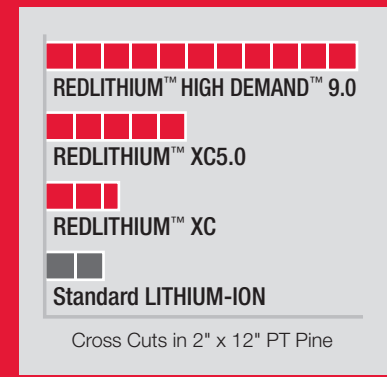
- Water Protection Barrier**
 - Routes water away from the electronics and out of the battery pack
- REDLINK™ Electronics**
 - Full M18™ System compatibility
 - Protection from abuse
 - Optimum tool and pack performance
- Temp Control Frame**
 - Extends run-time and life by minimizing heat
 - Operates below -18°C / 0°F
- Fully Enclosed Cell Carrier & Rubber Overmold**
 - Prevents pack failure from vibration or drops



MORE POWER



MORE RUN-TIME



LONGER BATTERY LIFE



ONE-KEY™

UNLOCKING THE DIGITAL JOBSITE.™



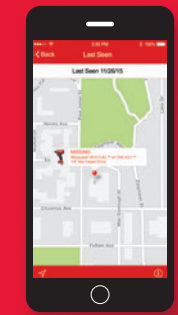
DIGITAL PLATFORM FOR TOOLS & EQUIPMENT



CUSTOMIZE. TRACK. MANAGE.



1
Customize your tool by dialing in performance.



2
Track your tool's location from anywhere.



3
Lock your tool and disable remotely.



4
Manage your inventory your way.

See pages 31, 35 – 36, 39, 45 – 47 and 50 for ONE-KEY™ Compatible Tools



TICK™

TRACKS ANYTHING.
SURVIVES EVERYTHING.
TOOL AND EQUIPMENT TRACKER



RUGGED PROTECTION



AVAILABLE KITS

1 PK TICK™ Tool and Equipment Tracker
48-21-2000
Includes: CR 2032 Coincell Battery

10 PK TICK™ Tool and Equipment Tracker
48-21-2010
Includes: (10) CR 2032 Coincell Batteries

4 PK TICK™ Tool and Equipment Tracker
48-21-2004
Includes: (4) CR 2032 Coincell Batteries

50 PK TICK™ Tool and Equipment Tracker
48-21-2050
Includes: (50) CR 2032 Coincell Batteries

Apple, the Apple logo and iBeacon are trademarks of Apple Inc., registered in the U.S. and other countries. App Store is a service mark of Apple Inc. Google Play and the Google Play logo are trademarks of Google Inc.

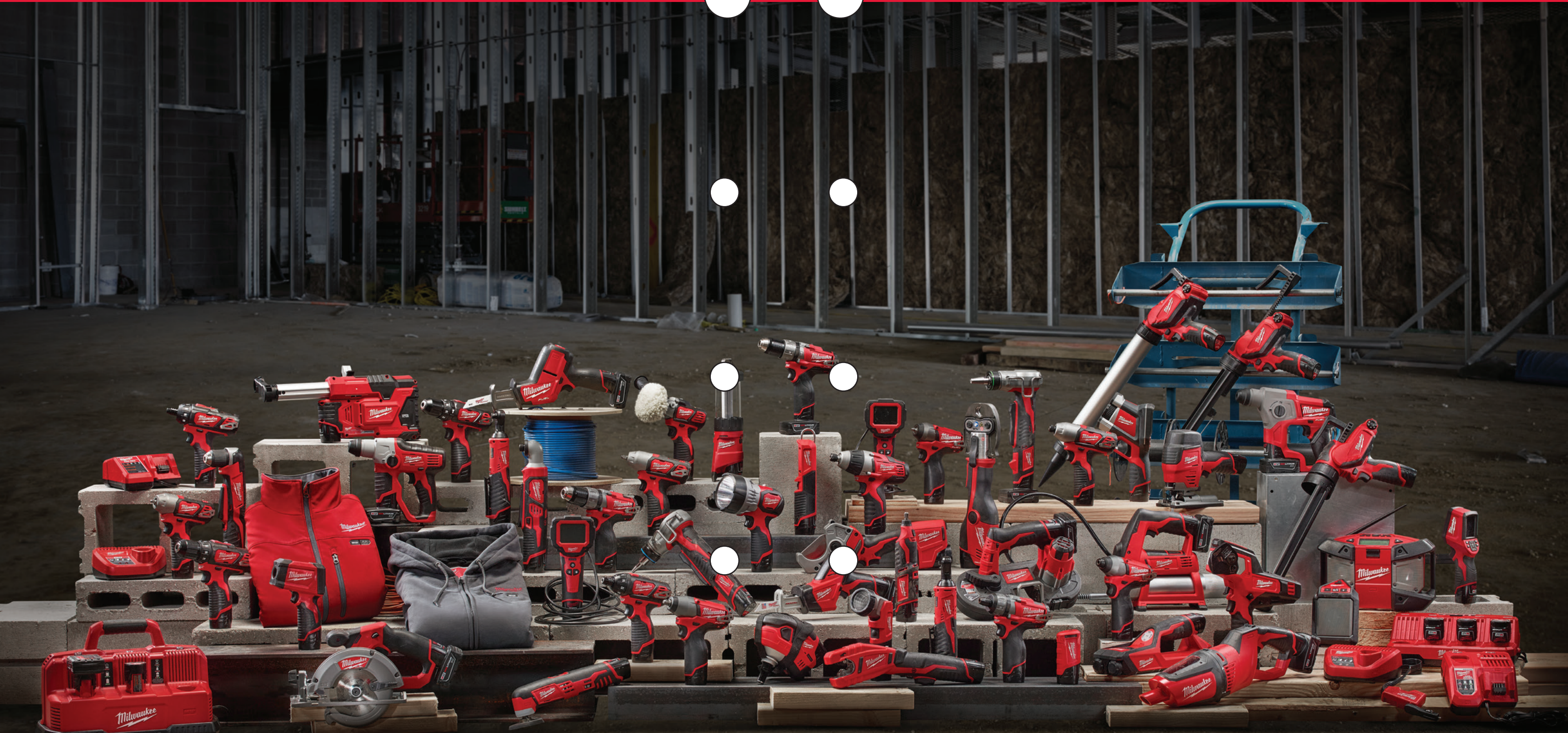
TRACKED BY ONE-KEY™

DOWNLOAD THE FREE APP NOW!



ONE-KEY™





M12

**PORTABLE
PRODUCTIVITY**



DRIVEN TO OUTPERFORM.™

M12 FUEL™ is engineered for the most demanding tradesmen in the world. M12 FUEL™ delivers unrivaled performance in a compact structure and features three MILWAUKEE® exclusive innovations—the POWERSTATE™ Brushless Motor, REDLITHIUM™ Battery Pack and REDLINK PLUS™ Intelligence Hardware and Software—that deliver unmatched power, run-time and durability.

Simply put, M12 FUEL™ is best-in-class, full-circle technology that drives, protects and powers your cordless tools beyond the rest.

M12 FUEL

LONGER MOTOR LIFE | **MORE** POWER | **MORE** RUN-TIME

NOW AVAILABLE

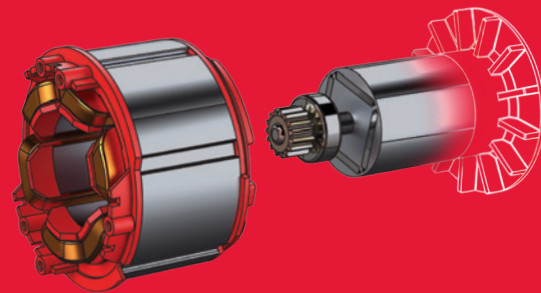


UPGRADE.
OUTWORK. OUTLAST.

UP TO **3X** MORE RUN-TIME | UP TO **20%** MORE POWER | OVER **2X** MORE LIFE

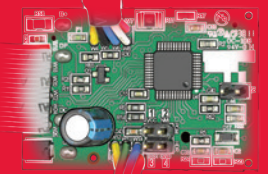
1 POWERSTATE™ BRUSHLESS MOTOR

- MILWAUKEE® Designed and Built Brushless Motor
- Outperforms All Leading Competitors
- Up to 10X Longer Motor Life



2 REDLINK PLUS™ INTELLIGENCE

- Most Advanced Electronic System on the Market for Maximum Performance
- Total System Communication with Overload Protection Increases Tool Life
- Built-In Fuel Gauge Displays Remaining Charge

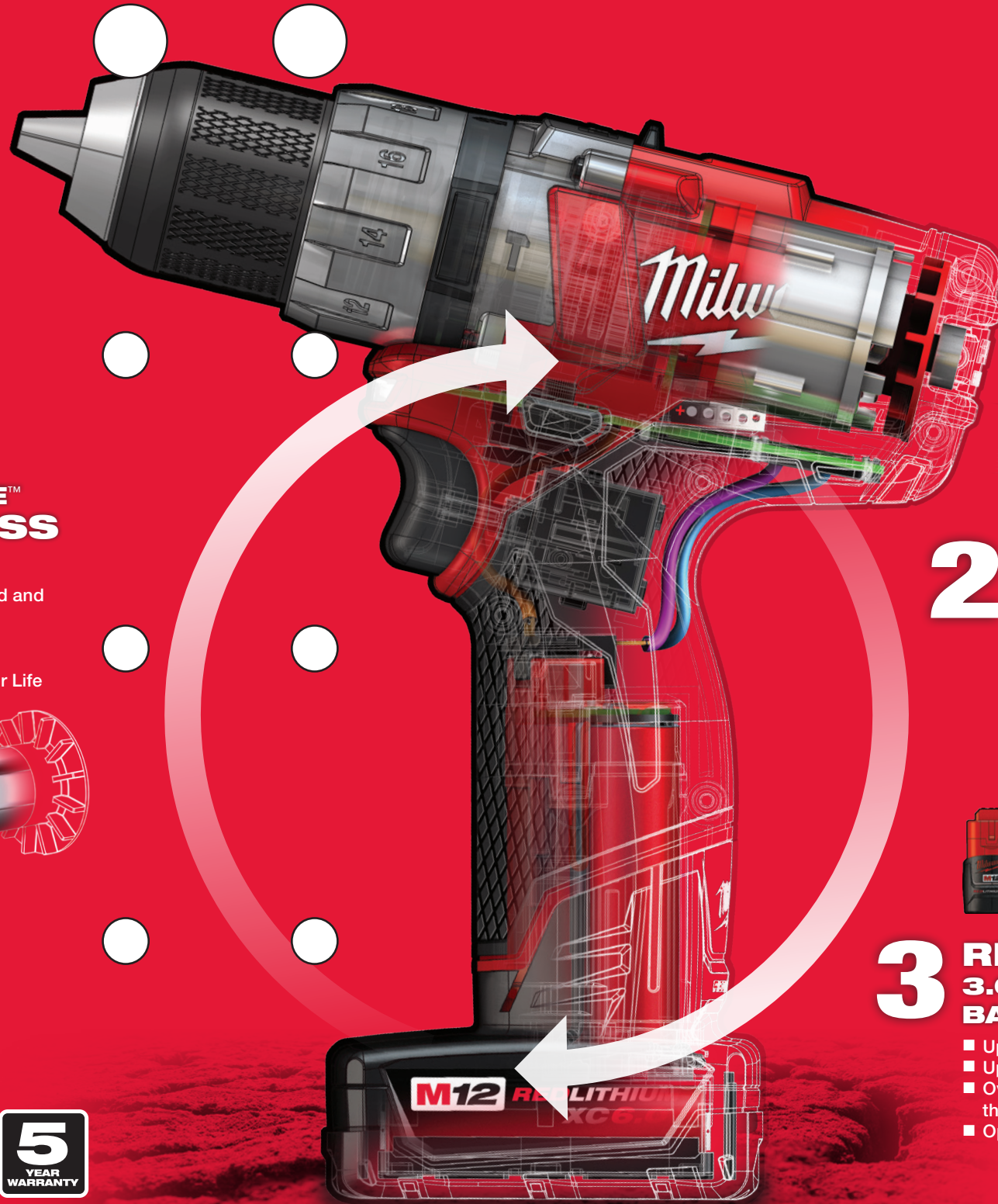


3 REDLITHIUM™ 3.0 & XC6.0 BATTERY PACKS

- Up to 3X More Run-Time
- Up to 20% More Power
- Over 2X More Recharges than Leading Competitors
- Operates Below -18°C / 0°F



5
YEAR WARRANTY



M12
SYSTEM

M12 FUEL
1/4" Hex 2-Speed Screwdriver Kit

2402-22 (2402-20 Tool-Only)

Specifications:

Peak Torque	325 in-lbs
RPM	0 – 450 / 0 – 1,700
Chuck Type	1/4" Hex Quick Change
Length	6-5/8"
Weight	2.3 lbs

Includes: (2) M12™ REDLITHIUM™ 2.0 Compact Battery Packs, Belt Clip, Charger, Carrying Case



M12™ 3/8" Hammer Drill/Driver Kit

2408-22 (2408-20 Tool-Only)

Specifications:

Peak Torque	275 in-lbs
RPM	0 – 400 / 0 – 1,500
BPM	0 – 22,500
Chuck Type	3/8" Metal Single Sleeve
Length	7-1/2"
Weight	2.7 lbs

Includes: (2) M12™ REDLITHIUM™ Compact Battery Packs, Belt Clip, Charger, Carrying Case



M12™ 1/4" Hex Impact Driver Kit

2462-22 (2462-20 Tool-Only)

Specifications:

Fastening Torque	1,000 in-lbs
IPM	0 – 3,300
RPM	0 – 2,500
Chuck Type	1/4"
Length	6-1/2"
Weight	2.3 lbs

Includes: (2) M12™ REDLITHIUM™ Compact Battery Packs, Belt Clip, Charger, Carrying Case



M12™ 1/4" Hex 2-Speed Screwdriver Kit

2406-22 (2406-20 Tool-Only)

Specifications:

Peak Torque	275 in-lbs
RPM	0 – 400 / 0 – 1,500
Chuck Type	1/4" Hex Quick Change
Length	6-3/4"
Weight	2.2 lbs

Includes: (2) M12™ REDLITHIUM™ Compact Battery Packs, Belt Clip, Charger, Carrying Case



M12 FUEL
1/2" Drill/Driver Kit

2403-22 (2403-20 Tool-Only)

Specifications:

Peak Torque	350 in-lbs
RPM	0 – 450 / 0 – 1,700
Chuck Type	1/2" Metal Single Sleeve – Ratcheting Chuck
Length	7-3/4"
Weight	2.9 lbs

Includes: (1) M12™ REDLITHIUM™ XC4.0 Extended Capacity Battery Pack, (1) M12™ REDLITHIUM™ 2.0 Compact Battery Pack, Belt Clip, Charger, Carrying Case



M12™ 1/4" Hex Right Angle Impact Driver Kit

2467-21 (2467-20 Tool-Only)

Specifications:

Fastening Torque	600 in-lbs
RPM	0 – 2,450
IPM	0 – 3,300
Chuck Type	1/4" Hex
Head Profile	1.4" Diameter
Weight	2.6 lbs

Includes: (1) M12™ REDLITHIUM™ Compact Battery Pack, Charger, Soft Carrying Case



M12™ 1/4" Impact Wrench Kit

2461-22 (2461-20 Tool-Only)

Specifications:

Fastening Torque	38 ft-lbs
IPM	0 – 3,800
RPM	0 – 2,500
Anvil	1/4" Friction Ring
Length	6"
Weight	2.1 lbs

Includes: (2) M12™ REDLITHIUM™ Compact Battery Packs, Belt Clip, Charger, Carrying Case



M12™ 1/4" Hex Screwdriver Kit

2401-22 (2401-20 Tool-Only)

Specifications:

Peak Torque	175 in-lbs
RPM	0 – 500
Chuck Type	1/4" Hex Quick Change
Length	6-1/2"
Weight	2.0 lbs

Includes: (2) M12™ REDLITHIUM™ Compact Battery Packs, Belt Clip, Charger, Soft Carrying Case



M12™ 3/8" Drill/Driver Kit

2407-22 (2407-20 Tool-Only)

Specifications:

Peak Torque	275 in-lbs
RPM	0 – 400 / 0 – 1,500
Chuck Type	3/8" Metal Single Sleeve
Length	7-3/8"
Weight	2.5 lbs

Includes: (2) M12™ REDLITHIUM™ Compact Battery Packs, Belt Clip, Charger, Carrying Case



M12 FUEL
3/8" Impact Wrench Kit

2454-22 (2454-20 Tool-Only)

Specifications:

Fastening Torque (2-Mode)	17 / 117 ft-lbs
IPM	0 – 3,500
RPM (2-Mode)	0 – 1,200 / 0 – 2,650
Anvil	3/8" Friction Ring
Length	6-1/2"
Weight	2.4 lbs

Includes: (2) M12™ REDLITHIUM™ 2.0 Compact Battery Packs, Belt Clip, Charger, Carrying Case



M12™ 3/8" Right Angle Drill/Driver Kit

2415-21 (2415-20 Tool-Only)

Specifications:

Peak Torque	100 in-lbs
RPM	0 – 800
Clutch Settings	11 Settings plus Drill Mode
Chuck Type	3/8" Single Sleeve
Head Profile	3-3/4"
Weight	2.4 lbs

Includes: (1) M12™ REDLITHIUM™ Compact Battery Pack, Charger, Soft Carrying Case



M12™ 3/8" Impact Wrench Kit

2463-22 (2463-20 Tool-Only)

Specifications:

Fastening Torque	100 ft-lbs
IPM	0 – 3,300
RPM	0 – 2,500
Chuck Type	3/8" Friction Ring
Length	6-1/2"
Weight	2.3 lbs

Includes: (2) M12™ REDLITHIUM™ Compact Battery Packs, Belt Clip, Charger, Carrying Case



M12™ 3/8" Ratchet Kit

2457-21 (2457-20 Tool-Only)

Specifications:

Fastening Torque	35 ft-lbs
RPM	0 – 250
Anvil	3/8" Ball Detent
Head Profile	3/4"
Length	10-3/4"
Weight	1.9 lbs

Includes: (1) M12™ REDLITHIUM™ Compact Battery Pack, 3/8" to 1/4" Adapter, Charger, Soft Carrying Case



M12 FUEL
1/2" Hammer Drill/Driver Kit

2404-22 (2404-20 Tool-Only)

Specifications:

Peak Torque	350 in-lbs
RPM	0 – 450 / 0 – 1,700
BPM	0 – 25,500
Chuck Type	1/2" Metal Single Sleeve – Ratcheting Chuck
Length	7-3/4"
Weight	3.0 lbs

Includes: (1) M12™ REDLITHIUM™ XC4.0 Extended Capacity Battery Pack, (1) M12™ REDLITHIUM™ 2.0 Compact Battery Pack, Belt Clip, Charger, Carrying Case



M12 FUEL
1/4" Hex Impact Driver Kit

2453-22 (2453-20 Tool-Only)

Specifications:

Fastening Torque (2-Mode)	175 / 1,200 in-lbs
IPM	0 – 3,550
RPM (2-Mode)	0 – 1,200 / 0 – 2,650
Chuck Type	1/4" Hex Quick Change
Length	6"
Weight	2.3 lbs

Includes: (2) M12™ REDLITHIUM™ 2.0 Compact Battery Packs, Belt Clip, Charger, Carrying Case



M12 FUEL
1/4" Impact Wrench Kit

2452-22 (2452-20 Tool-Only)

Specifications:

Fastening Torque (2-Mode)	10 / 42 ft-lbs
IPM	0 – 4,000
RPM (2-Mode)	0 – 1,200 / 0 – 2,650
Anvil	1/4" Friction Ring
Length	5-3/4"
Weight	2.1 lbs

Includes: (2) M12™ REDLITHIUM™ 2.0 Compact Battery Packs, Belt Clip, Charger, Carrying Case



M12™ 1/4" Ratchet Kit

2456-21 (2456-20 Tool-Only)

Specifications:

Fastening Torque	30 ft-lbs
RPM	0 – 250
Anvil	1/4" Ball Detent
Head Profile	3/4"
Length	10-3/4"
Weight	1.9 lbs

Includes: (1) M12™ REDLITHIUM™ Compact Battery Pack, Charger, Soft Carrying Case




M12 FUEL 5/8" SDS Plus Rotary Hammer Kit
2416-22XC (2416-20 Tool-Only)

Specifications:

RPM	0 – 900
BPM	0 – 6,200
2-Mode Operation	Rotary Hammer and Rotation Only
Length	10"
Weight	3.9 lbs

Includes: (2) M12™ REDLITHIUM™ XC4.0 Extended Capacity Battery Packs, Charger, Carrying Case

Related Accessory:
2306-22 M12™ HAMMERVAC™ Universal Dust Extractor





M12™ 1/2" SDS Plus Rotary Hammer Kit
2412-22XC (2412-20 Tool-Only)

Specifications:

RPM	0 – 800
BPM	0 – 5,350
2-Mode Operation	Rotary Hammer and Rotation Only
Length	9"
Weight	3.9 lbs

Includes: (2) M12™ REDLITHIUM™ XC Extended Capacity Battery Packs, Charger, Carrying Case

Related Accessory:
2306-22 M12™ HAMMERVAC™ Universal Dust Extractor




M12™ Palm Nailer Kit
2458-21 (2458-20 Tool-Only)

Specifications:

Impact Energy	2.2 ft-lbs (3.0 J)
BPM	0 – 2,700
Collet Capacity	6D – 16D
Head	3/4" Low Profile
Magnetic Tip	Yes
Weight	3.4 lbs

Includes: (1) M12™ REDLITHIUM™ Compact Battery Pack, Hand Strap, Charger, Soft Carrying Case




M12™ HAMMERVAC™ Universal Dust Extractor Kit
2306-22 (2306-20 Tool-Only)

COMPLIANCE OSHA SOLUTION **CERTIFIED HEPA FILTER**

INDUSTRY'S ONLY UNIVERSAL DUST EXTRACTOR



Specifications:

Universal Handle System	Compatible with Major Brands of SDS Plus Rotary Hammers and AC and DC Hammer Drills
Replaceable Certified HEPA Filter	Filters 99.97% of Debris 0.3 Microns and Above
Self-Powered by M12™ REDLITHIUM™ Battery Pack	No Cords or Hoses for Maximum Portability
3-Mode Switch	Yes (Auto-On and Auto-Off w/ Delay)
Max Bit Size	5/8"
Weight	3.3 lbs

Includes: (2) M12™ REDLITHIUM™ Compact Battery Packs, (3) Side Handle Collars, Side Handle Grip, Nozzle, Charger, Carrying Case



M12™ Spot Polisher Kit
2438-22X, 2438-22 (2438-20 Tool-Only)

Specifications:

Polishing RPM	0 – 2,800
Sanding RPM	0 – 8,300
Length	5-1/10"
Weight	2.4 lbs

Includes: 2438-22X (1) M12™ REDLITHIUM™ XC Extended Capacity Battery Pack, (1) M12™ REDLITHIUM™ Compact Battery Pack, 5 Pc Accessory Pack, Side Handle, Charger, Soft Carrying Case; 2438-22 Includes (2) M12™ REDLITHIUM™ Compact Battery Packs



M12 FUEL 5-3/8" Circular Saw Kit
2530-21XC (2530-20 Tool-Only)

Specifications:

RPM	3,600
Bevel Capacity	50°
Cut Capacity	1-5/8" at 90°; 1-1/8" at 45°
Arbor	10 mm
Blade Guards	Aluminum
Weight	6.2 lbs

Includes: (1) M12™ REDLITHIUM™ XC4.0 Extended Capacity Battery Pack, Circular Saw Blade, Wrench, Charger, Contractor Bag




M12 FUEL HACKZALL® Recip Saw Kit
2520-21XC (2520-20 Tool-Only)

Specifications:

SPM	0 – 3,000
Stroke Length	5/8"
Keyless Blade Clamp	QUIK-LOK™ (Accepts all SAWZALL® Blades)
Length	13-1/4"
Weight	4.1 lbs

Includes: (1) M12™ REDLITHIUM™ XC4.0 Extended Capacity Battery Pack, HACKZALL® Blade, Charger, Contractor Bag




M12™ HACKZALL® Recip Saw Kit
2420-22, 2420-21 (2420-20 Tool-Only)

Specifications:

SPM	0 – 3,000
Stroke Length	1/2"
Keyless Blade Clamp	QUIK-LOK™ (Accepts all SAWZALL® Blades)
Length	11"
Weight	2.6 lbs

Includes: 2420-22 (2) M12™ REDLITHIUM™ Compact Battery Packs, (2) HACKZALL® Blades, Charger, Contractor Bag; 2420-21 Includes (1) M12™ REDLITHIUM™ Compact Battery Pack




M12™ High Performance Jig Saw Kit
2445-21 (2445-20 Tool-Only)

Specifications:

SPM	0 – 2,800
Stroke Length	3/4"
Bevel Capacity	45° (Positive Locks at 90° and 45°)
Blade Clamp	QUIK-LOK™ T-Shank
Length	8-3/4"
Weight	4.2 lbs

Includes: (1) M12™ REDLITHIUM™ Compact Battery Pack, MILWAUKEE® 10 TPI Wood Cutting T-Shank Jig Saw Blade, Anti-Splintering Insert, Non-Marring Shoe, Charger, Contractor Bag



M12™ Multi-Tool Kit
2426-22, 2426-21 (2426-20 Tool-Only)

Specifications:

Speed Settings	12
OPM	5,000 – 20,000
Universal Accessory Adapter	Yes
Length	10-7/8"
Weight	2.1 lbs

Includes: 2426-22 (2) M12™ REDLITHIUM™ Compact Battery Packs, Accessory Adapter, Wood Cutting Blade, Sanding Pad, (5) Assorted Sanding Sheets, Charger, Contractor Bag; 2426-21 Includes (1) M12™ REDLITHIUM™ Compact Battery Pack



M12™ Sub-Compact Band Saw Kit
2429-21XC (2429-20 Tool-Only)

Specifications:

SFPM	280
Blade Size	27"
Cut Capacity	1-5/8" x 1-5/8"
Length	11"
Weight	6.7 lbs

Includes: (1) M12™ REDLITHIUM™ XC Extended Capacity Battery Pack, 18 TPI Sub-Compact Portable Band Saw Blade, Charger, Carrying Case

Related Accessory:
48-39-0572 18 TPI Sub-Compact Portable Band Saw Blades (3-Pack)

Meets OSHA Guarding Requirements. Suitable for One-Handed Use.




M12™ Plastic Pipe Shear Kit

2470-21 (2470-20 Tool-Only)

Specifications:

Cut Capacity	Up to 2" Schedule 80 PVC
Torque	1,900 in-lbs
Blade	3 mm Reinforced Stainless Steel
Length	14-3/8"
Weight	4.35 lbs



Includes: (1) M12™ REDLITHIUM™ Compact Battery Pack, Charger, Carrying Case

Related Accessory:

48-44-0405 M12™ Plastic Pipe Shear Blade



M12™ Copper Tubing Cutter Kit

2471-22, 2471-21 (2471-20 Tool-Only)

Specifications:

Cut Capacity	3/8" – 1" (1/2" – 1-1/8" O.D.)
Tubing Type	M, L and K Copper
RPM	500
Length	14"
Weight	3.2 lbs



Includes: 2471-22 (2) M12™ REDLITHIUM™ Compact Battery Packs, Charger, Carrying Case; 2471-21 Includes (1) M12™ REDLITHIUM™ Compact Battery Pack

Related Accessory:

48-38-0010 Copper Cutter Wheel (2-Pack)

M12™ Rotary Tool Kit

2460-21 (2460-20 Tool-Only)

Specifications:

Speed Settings	6
RPM	5,000 – 32,000
Collet	1/8", Universal
Length	9-1/2"
Weight	1.3 lbs



Includes: (1) M12™ REDLITHIUM™ Compact Battery Pack, (5) Cutting Wheels, Mandrel, Wrench, Charger, Soft Carrying Case

Related Accessory:

49-94-1500 5 Pc Reinforced Cut-Off Wheels

M12™ 600 MCM Cable Cutter Kit

2472-21XC (2472-20 Tool-Only)

Specifications:

Cut Capacity	600 MCM Copper, 750 MCM Aluminum, 1-3/16" Communication Cable
Jaw Opening	1-7/16"
Two-Speed	Yes
Length	10-1/2"
Weight	6.7 lbs



Includes: (1) M12™ REDLITHIUM™ XC Extended Capacity Battery Pack, Multi-Voltage Charger, Carrying Case

Related Accessory:

48-44-0410 M12™ 600 MCM Cable Cutter Blade

M12™ Drain Snake Kit

2571-21 (2571-20 Tool-Only)

Specifications:

1/4" Capacity	25'
5/16" Capacity	25'
Speed Control	0 – 500 RPM
LED Light	Yes
Weight (w/ cable)	10.6 lbs



Includes: (1) M12™ REDLITHIUM™ Compact Battery Pack, 5/16" x 25' Inner Core Bulb Head Cable with Inner Drum, Charger, 5 Gallon Storage Bucket

Related Accessories:

- 48-53-2571** 5/16" x 25' Inner Core Bulb Head Cable;
- 48-53-2572** 5/16" x 25' Inner Core Drop Head Cable;
- 48-53-2573** 1/4" x 25' Inner Core Bulb Head Cable;
- 48-53-2574** 1/4" x 25' Inner Core Drop Head Cable;
- 48-53-2581** 5/16" x 25' Inner Core Bulb Head Cable w/ Drum;
- 48-53-2582** 5/16" x 25' Inner Core Drop Head Cable w/ Drum;
- 48-53-2583** 1/4" x 25' Inner Core Bulb Head Cable w/ Drum;
- 48-53-2584** 1/4" x 25' Inner Core Drop Head Cable w/ Drum



M12™ TRAPSSNAKE™ 6' Toilet Auger Kit

2576-21 (2576-20 Tool-Only)

Specifications:

RPM	0 – 500
Cable Lock	Yes
Cable Size	6' x 1/2"
Cable Head	Retriever Bulb
Replacement Cables	Available
Weight	9.0 lbs



Includes: (1) M12™ REDLITHIUM™ Compact Battery Pack, Cable, Charger

Related Accessory:

48-53-2576 TRAPSSNAKE™ 6' Toilet Auger Replacement Cable

M12™ TRAPSSNAKE™ 4' Urinal Auger Kit

2574-21 (2574-20 Tool-Only)

Specifications:

RPM	0 – 500
Cable Lock	Yes
Cable Size	4' x 3/8"
Cable Head	Bulb
Replacement Cables	Available
Weight	6.4 lbs



Includes: (1) M12™ REDLITHIUM™ Compact Battery Pack, Cable, Charger

Related Accessory:

48-53-2577 TRAPSSNAKE™ 4' Urinal Auger Replacement Cable

M12™ ProPEX® Expansion Tool Kit

2432-22XC, 2432-22 (2432-20 Tool-Only)

Specifications:

Capacity	3/8" – 1"
Auto-Rotate	Built-In
Head Compatibility	3/8" – 1" M12™ / Uponor
Dimensions (L x W x H)	7-1/10" x 3-7/10" x 12-4/5"
Weight	5.0 lbs



Includes: 2432-22 XC (2) M12™ REDLITHIUM™ XC Extended Capacity Battery Packs, (3) ProPEX® Expansion Heads (1/2", 3/4", 1"), Grease, Charger, Carrying Case; 2432-22 Includes (2) M12™ REDLITHIUM™ Compact Battery Packs

Related Accessories:

- 49-16-2403** 3/8" ProPEX® Expansion Head;
- 49-16-2404** 1/2" ProPEX® Expansion Head;
- 49-16-2405** 5/8" ProPEX® Expansion Head;
- 49-16-2406** 3/4" ProPEX® Expansion Head;
- 49-16-2408** 1" ProPEX® Expansion Head

M12™ FORCE LOGIC™ Press Tool Kit

2473-22 (2473-20 No Jaw Kit)

Specifications:

Capacity	1/2" – 1-1/4" CU
Calibration Interval	32,000 Cycles (LED Indicator)
Approximate Cycle Time	5 Seconds
Press Force	5,400 lbs
Length	12-3/4"
Weight	3.8 lbs



Includes: 2473-22 (2) M12™ REDLITHIUM™ Compact Battery Packs, (3) Jaws (1/2", 3/4", 1"), Charger, Carrying Case; 2473-20 Includes No Jaws

Related Accessories:

- 49-16-2450** M12™ 1/2" Jaw;
- 49-16-2451** M12™ 3/4" Jaw;
- 49-16-2452** M12™ 1" Jaw;
- 49-16-2453** M12™ 1-1/4" Jaw



M12™ No-Hub Driver Kit

2455-22 (2455-20 Tool-Only)

Specifications:

Torque Settings (3-Mode)	60 in-lbs / 80 in-lbs / Drill
RPM	0 – 750
Chuck Type	1/4" Hex
Calibration Interval	25,000 Cycles (LED Indicator)
Weight	2.7 lbs



Includes: (2) M12™ REDLITHIUM™ Compact Battery Packs, (3) SHOCKWAVE™ Nut Drivers (1/4", 5/16", 3/8"), Charger, Carrying Case

M12™ 10 oz Caulk and Adhesive Gun Kit

2441-21 (2441-20 Tool-Only)

Specifications:

Force	400 lbs
Inches Per Minute	0 – 29
Speed Settings	6
Auto-Reverse Anti-Drip	Yes
Weight	4.1 lbs



Includes: (1) M12™ REDLITHIUM™ Compact Battery Pack, 10 oz Carriage, M12™ 10 oz Plunger Rod and Piston Assembly, Charger

M12™ 20 oz Aluminum Barrel Sausage Style Caulk and Adhesive Gun Kit

2442-21

Specifications:

Force	400 lbs
Inches Per Minute	0 – 29
Speed Settings	6
Auto-Reverse Anti-Drip	Yes
Weight	4.9 lbs



Includes: (1) M12™ REDLITHIUM™ Compact Battery Pack, 20 oz Aluminum Sausage Style Barrel, M12™ 20 oz Plunger Rod and Piston Assembly, Nozzle, Charger

M12™ Quart Caulk and Adhesive Gun Kit

2444-21

Specifications:

Force	400 lbs
Inches Per Minute	0 – 29
Speed Settings	6
Auto-Reverse Anti-Drip	Yes
Weight	5.5 lbs



Includes: (1) M12™ REDLITHIUM™ Compact Battery Pack, Quart Carriage, M12™ Quart Plunger Rod and Piston Assembly, Charger

M12™ Caulk Gun Accessories

Compatible with 2441-21, 2442-21, 2444-21

- 48-08-0900** M12™ 10 oz Caulk and Adhesive Gun Conversion Kit;
- 48-08-0905** M12™ 20 oz Aluminum Barrel Sausage Style Caulk and Adhesive Gun Conversion Kit;
- 48-08-0910** M12™ Quart Caulk and Adhesive Gun Conversion Kit;
- 48-08-1091** 20 oz Aluminum Barrel Kit;
- 48-08-1096** 20 oz Clear Barrel Kit;
- 31-12-0700** Caulk Gun Nozzle – Black

M12™ Grease Gun Kit

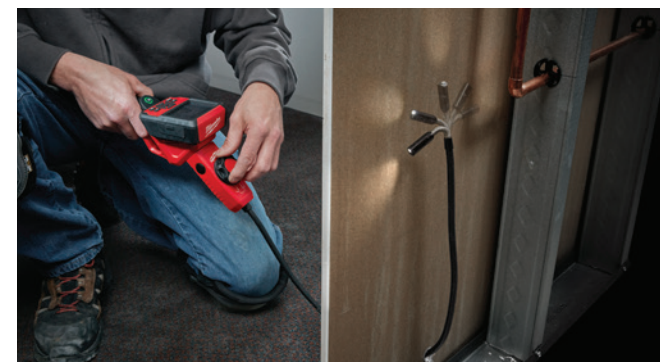
2446-21XC (2446-20 Tool-Only)

Specifications:

Output Pressure	Over 8,000 PSI
Run-Time	Up to 7 Grease Cartridges Per Charge
Grease Capacity	14 oz Cartridge, 16 oz Bulk, 16 oz Suction
Air Bleeder Valve	Yes
Weight	7.2 lbs



Includes: (1) M12™ REDLITHIUM™ XC Extended Capacity Battery Pack, 36" Flex Hose with Spring Guard, Grease Coupler, Charger, Carrying Case



M12™ M-SPECTOR FLEX™ 3 ft Inspection Camera Cable Kit

2315-21

Specifications:

Screen Size	3.5" High-Resolution LCD
Camera Resolution	640 x 480
Camera Head Diameter	12.5 mm (0.49")
Cable Length	3 ft
Wireless Distance	Up to 15 ft

Includes: (1) M12™ REDLITHIUM™ Compact Battery Pack, SD Card, USB Cable, Charger, Carrying Case



M12™ M-SPECTOR FLEX™ 3 ft Inspection Camera Cable w/ PIVOTVIEW™ Kit

2317-21

Specifications:

Screen Size	3.5" High-Resolution LCD
Camera Resolution	640 x 480
Camera Head Diameter	12.5 mm (0.49")
Head Movement	Up to 270° PIVOTVIEW™ Camera
Cable Length	3 ft
Wireless Distance	Up to 15 ft



Includes: (1) M12™ REDLITHIUM™ Compact Battery Pack, SD Card, USB Cable, Charger, Carrying Case



M12™ M-SPECTOR FLEX™ Inspection Camera Accessories

Compatible with 2317-21, 2316-21, 2315-21

- 48-53-0155** M-SPECTOR FLEX™ 3 ft Inspection Camera Cable w/ PIVOTVIEW™;
- 48-53-0151** M-SPECTOR FLEX™ 9 ft Inspection Camera Cable;
- 48-53-0150** M-SPECTOR FLEX™ 3 ft Inspection Camera Cable



M12™ M-SPECTOR FLEX™ 9 ft Inspection Camera Cable Kit

2316-21

Specifications:

Screen Size	3.5" High-Resolution LCD
Camera Resolution	640 x 480
Camera Head Diameter	12.5 mm (0.49")
Cable Length	9 ft
Wireless Distance	Up to 15 ft



Includes: (1) M12™ REDLITHIUM™ Compact Battery Pack, SD Card, USB Cable, Charger, Carrying Case



M12™ M-SPECTOR 360™ Rotating Inspection Scope Kit

2313-21 (2313-20 Tool-Only)

Specifications:

Screen Size	2.7" High-Resolution LCD
Display Resolution	320 x 240
Camera Head Diameter	9 mm (0.35")
Cable Length	3 ft
LED Brightness	4 LEDs, 5 Settings

Includes: (1) M12™ REDLITHIUM™ Compact Battery Pack, Hook, Magnet, Mirror Attachments, Charger, Carrying Case



M12™ M-SPECTOR 360™ 9 ft Rotating Inspection Scope Kit

2314-21

Specifications:

Screen Size	2.7" High-Resolution LCD
Display Resolution	320 x 240
Camera Head Diameter	9 mm (0.35")
Cable Length	9 ft
LED Brightness	4 LEDs, 5 Settings

Includes: (1) M12™ REDLITHIUM™ Compact Battery Pack, Hook, Magnet, Mirror Attachments, Pipe Guide, Charger, Carrying Case



M12™ M-SPECTOR 360™ Rotating Inspection Scope Accessories

Compatible with 2313-21, 2314-21

- 48-53-0112** Accessory 3-Pack (Includes Hook, Magnet, Mirror Attachments);
- 48-53-0113** Pipe Guide Accessory



M12™ 102 x 77 Infrared Camera Kit

2258-21

Specifications:

Thermal Resolution	102 x 77
Temperature Range	14°F – 626°F (-10°C – 330°C)
Screen Size	2.4" LCD
Distance-to-Spot Ratio (Center Crosshair)	83:1
Targeting Assistance	Dual Laser
Image Storage & Reporting	Yes

Includes: (1) M12™ REDLITHIUM™ Compact Battery Pack, Rubber Boot, USB Cable, SD Card, Manual, Charger, Soft Carrying Case



MILWAUKEE® Thermal Imaging Software Available Online



M12™ 160 x 120 Thermal Imager Kit

2260-21, NIST Certified 2260-21NST

Specifications:

Thermal Resolution	160 x 120
Temperature Range	14°F – 662°F (-10°C – 350°C)
Temperature Accuracy	±4° F (±2° C)
Visual Camera	Yes
Screen Size	3.5" LCD
Image Storage & Reporting	Yes

Includes: (1) M12™ REDLITHIUM™ Compact Battery Pack, Thermal Imager Report Software, SD Card, USB Cable, SD Card Reader, Quick Reference Card, Statement of Calibration, Charger, Carrying Case



MILWAUKEE® Thermal Imaging Software Available Online



M12™ 12:1 Infrared TEMP-GUN™

2278-20

Specifications:

Distance-to-Spot Ratio	12:1
Temperature Range	-22°F – 1,022°F (-30°C – 550°C)
Basic Accuracy	+/-1.8%
Max/Min/Avg/Dif	Yes
High/Low Alerts	Yes
Emissivity	Fixed, .95
Drop Test	6 ft

Battery and Charger Sold Separately



M12™ LED Metal Flashlight Kit

2355-21 (2355-20 Tool-Only)

Specifications:

Lumens	800 / 325 / 800
Modes	High, Medium, Strobe
Beam Distance	375 yd / 343 m
Beam Focus	Slide, Spot/Flood
Moisture Resistance	IP54
Structure	6000 Series Aluminum, Type II Anodize Finish
Length	9"
Weight	1.2 lbs



5 YEAR LIMITED LIFETIME WARRANTY

Includes: (1) M12™ REDLITHIUM™ Compact Battery Pack, Lanyard, Charger



M12™ LED Spot Light

2353-20

Specifications:

Lumens	750 / 400 / 750
Modes	High, Low, Strobe
Beam Distance	700 yd / 640 m
Moisture Resistance	IP54
Length	6-1/8"
Weight	1.4 lbs



5 YEAR LIMITED LIFETIME WARRANTY

Battery and Charger Sold Separately

Includes: Lanyard



M12™ LED Lantern/Flood Light

2362-20

Specifications:

Lumens	400 / 200 / 40 / 400
Modes	High, Medium, Low, Strobe
Beam Pattern	Adjustable 180° – 360°
Moisture Resistance	IP54
Hands-Free	2 Hooks for Hanging
USB Charger	2.1A USB Charging Port
Length	10-1/2"
Weight	1.0 lb



5 YEAR LIMITED LIFETIME WARRANTY

Battery and Charger Sold Separately



M12™ ROVER™ LED Flood Light

2364-20

Specifications:

Lumens	1,000 / 400 / 200
Modes	High, Medium, Low
Hands Free	Integrated Magnet, Spring Loaded Clamp
Moisture Resistance	IP54
Length	7-1/2"
Weight	2.2 lbs



5 YEAR LIMITED LIFETIME WARRANTY

Battery and Charger Sold Separately



M12™ LED Stick Light

2351-20

Specifications:

Lumens	220
Hands-Free	Multi-Position Stainless Steel Hook
Moisture Resistance	IP54
Length	9-1/4"
Weight	0.6 lbs



5 YEAR LIMITED LIFETIME WARRANTY

Battery and Charger Sold Separately

Related Accessory:

49-24-2351 M12™ Stick Light Magnet Holds light to metal surfaces for hands-free use

M12™ LED Work Light

49-24-0146

Specifications:

Lumens	100
Hands-Free	Integrated Magnet
Head Rotation	90°



5 YEAR LIMITED LIFETIME WARRANTY

Battery and Charger Sold Separately

M12™ Heated Jacket Kit

Black 201B-21 (201B-20 Jacket-Only)

Grey 201G-21 (201G-20 Jacket-Only)

Red 201R-21 (201R-20 Jacket-Only)

Camo 221C-21 (221C-20 Jacket-Only)

Specifications:

Heating Elements	5 (Chest, Back, Pockets)
Heat Settings	3 (High, Medium, Low)
Run-Time	Up to 8 Hours
Outer Material	TOUGH-SHELL™ Stretch Polyester
Wind/Water Resistant	Yes
USB Charger	2.1A
Washer/Dryer Safe	Yes



Includes: (1) M12™ REDLITHIUM™ 2.0 Compact Battery Pack, M12™ Power Source, Charger

Available Sizes: S, M, L, XL, 2X, 3X



M12™ Heated Hoodie Kit

Black 301B-21 (301B-20 Hoodie-Only)

Grey 301G-21 (301G-20 Hoodie-Only)

Red 301R-21 (301R-20 Hoodie-Only)

Specifications:

Heating Elements	3 (Chest, Back)
Heat Settings	3 (High, Medium, Low)
Run-Time	Up to 6 Hours
Outer Material	Cotton/Polyester Blend
Inner Lining	Thermal Waffle Weave
Washer/Dryer Safe	Yes



Includes: (1) M12™ REDLITHIUM™ Compact Battery Pack, M12™ Battery Holder, Charger

Available Sizes: S, M, L, XL, 2X, 3X

M12™ Heated 3-in-1 Jacket Kit*

Black 251B-21 (251B-20 3-in-1 Jacket-Only)

Specifications:

Heating Elements (in Hoodie)	3 (Chest, Back)
Heat Settings	3 (High, Medium, Low)
Run-Time	Up to 8 Hours
Outer Material	GRIDIRON™ Ripstop Polyester
Wind/Water Resistant	Yes
USB Charger	2.1A
Washer/Dryer Safe	Yes



Includes: (1) M12™ REDLITHIUM™ 2.0 Compact Battery Pack, M12™ Power Source, Charger

Available Sizes: S, M, L, XL, 2X, 3X
*M12™ Heated 3-in-1 Jacket is made up of (2) pieces: heated hoodie and durable outer shell.



M12™ Heated Vest Kit

Black 271B-21 (271B-20 Vest-Only)

Specifications:

Heating Elements	3 (Chest, Back)
Heat Settings	3 (High, Medium, Low)
Run-Time	Up to 6 Hours
Outer Material	GRIDIRON™ Ripstop Polyester
Inner Lining	Thermal Fleece
Wind/Water Resistant	Yes
Washer/Dryer Safe	Yes



Includes: (1) M12™ REDLITHIUM™ Compact Battery Pack, M12™ Battery Holder, Charger

Available Sizes: S, M, L, XL, 2X, 3X

M12™ Women's Heated Jacket Kit

Black 231B-21

Specifications:

Heating Elements	4 (Back, Collar, Pockets)
Heat Settings	3 (High, Medium, Low)
Run-Time	Up to 8 Hours
Outer Material	Polyester Soft Shell
Wind/Water Resistant	Yes
USB Charger	2.1A
Washer/Dryer Safe	Yes



Includes: (1) M12™ REDLITHIUM™ 2.0 Compact Battery Pack, M12™ Power Source, Charger

Available Sizes: S, M, L, XL, 2X

M12™ Heated Gear Accessory

Compatible with all M12™ Heated Gear

49-24-2301 M12™ Heated Jacket 12V DC Plug Adapter



Realtree Xtra © and Realtree MAX-1 © 2017 of Jordan Outdoor Enterprises, Ltd., all rights reserved

M12™ Power Source

49-24-2310

Specifications:

2.1 Amp USB Port	Universal Charging for Smartphones, Tablets and Other Portable Electronic Devices
On-Board Fuel Gauge	Yes
Powered By	All M12™ Batteries



Battery Sold Separately

Powers all MILWAUKEE® M12™ Heated Gear



M12™ Compact Vacuum

0850-20

Specifications:

Air Volume	33 CFM
Suction (H ₂ O)	14.5"
Run-Time	Up to 29 mins (XC4.0 Battery)
Inlet Diameter	1-1/4"
Weight	2.3 lbs



Battery and Charger Sold Separately

Includes: Utility Nozzle, Extension Wand, Crevice Tool, Filter Assembly

Related Accessory: 49-90-1950 Filter

M12™ Wireless Jobsite Speaker

2592-20

Specifications:

Modes	Bluetooth®, AUX (Cable Not Included)
Bluetooth Antenna	30 ft Range
USB Charging Port	2.1 Amps
Powered By	All M12™ Batteries



Battery and Charger Sold Separately

M18™ / M12™ Wireless Jobsite Speaker

2891-20

Specifications:

Modes	Bluetooth, AUX (Cable Not Included)
Bluetooth Range	100 ft
USB Charging Port	2.1 Amp
Powered By	All M18™ and M12™ Batteries



Battery and Charger Sold Separately

Includes: AC Adapter

M12™ Jobsite Radio

2590-20

Specifications:

Modes	AM, FM, AUX
Tuner	Digital Processor w/ 10 Station Presets
Powered By	All M12™ Batteries, AC Adapter



Battery and Charger Sold Separately

Includes: Auxiliary Input Cord, AC Adapter, (2) AAA Batteries (For Memory Backup)

M18™ and M12™ Rapid Charge Station

48-59-1807

Specifications:

Compatibility	All M18™ and M12™ Batteries
Charge Sequence	Charges 3 Batteries Simultaneously
Charge Speed	Charges Individual Batteries up to 40% Faster
Capacity	Holds (3) M18™ and (3) M12™ Batteries
Integrated Hang-Holes	Yes
Cell Voltage Monitoring	Yes
Pass-Through Plug	Yes



M18™ and M12™ Rapid Charger

48-59-1808

Specifications:

Compatibility	All M18™ and M12™ Batteries
Charge Sequence	Sequential (First In, First Charged)
Charge Speed	Charges Individual Batteries up to 40% Faster
On-Board Indicator Light	Yes
Integrated Hang-Holes	Yes
Cell Voltage Monitoring	Yes



Batteries Sold Separately

M12™ Four Bay Sequential Charger

48-59-1204

Specifications:

Compatibility	All M12™ Batteries
Charge Sequence	Sequential (First In, First Charged)
Integrated Hang-Holes	Yes
Skip Button	Manually Designate which Battery Charges First
On-Board Indicator Light	Yes
Cell Voltage Monitoring	Yes



Batteries Sold Separately

M18™ and M12™ Multi-Voltage Charger

48-59-1812

Specifications:

Compatibility	All M18™ and M12™ Batteries
Charge Sequence	Sequential (First In, First Charged)
Integrated Hang-Holes	Yes
On-Board Indicator Light	Yes
Cell Voltage Monitoring	Yes



Batteries Sold Separately

M12™ LITHIUM-ION Battery Charger

48-59-2401

Specifications:

Compatibility	All M12™ Batteries
Integrated Hang-Holes	Yes
On-Board Indicator Light	Yes
Cell Voltage Monitoring	Yes



M12™ AC/DC Wall and Vehicle Charger

2510-20

Specifications:

Compatibility	All M12™ Batteries
Integrated Hang-Holes	Yes
On-Board Indicator Light	Yes
Cell Voltage Monitoring	Yes



UPGRADE. OUTWORK. OUTLAST.

UP TO **3X** MORE RUN-TIME

UP TO **20%** MORE POWER

OVER **2X** MORE LIFE

REDLITHIUM™ 3.0/XC6.0

M12™ REDLITHIUM™ Compact Battery Pack

48-11-2401

Specifications:

Amp Hours	1.5
Cell Chemistry	LITHIUM-ION



2-Pack Available 48-11-2411



M12™ REDLITHIUM™ XC Extended Capacity Battery Pack

48-11-2402

Specifications:

Amp Hours	3.0
Cell Chemistry	LITHIUM-ION



2-Pack Available 48-11-2412



M12™ REDLITHIUM™ 2.0 Compact Battery Pack

48-11-2420

Specifications:

Amp Hours	2.0
Cell Chemistry	LITHIUM-ION



M12™ REDLITHIUM™ XC4.0 Extended Capacity Battery Pack

48-11-2440

Specifications:

Amp Hours	4.0
Cell Chemistry	LITHIUM-ION



M12™ REDLITHIUM™ 3.0 Compact Battery Pack

48-11-2430

Specifications:

Amp Hours	3.0
Cell Chemistry	LITHIUM-ION



M12™ REDLITHIUM™ XC6.0 Extended Capacity Battery Pack

48-11-2460

Specifications:

Amp Hours	6.0
Cell Chemistry	LITHIUM-ION



M12™ COMBO KITS

Kit Tool Total	2 - 3 PIECE KITS										4 - 8 PIECE KITS				
	2490-22	2491-22	2492-22	2494-22	2495-22	2497-22	2577-21	2594-22	2597-22	2491-23	2493-23	2493-24	2495-28	2496-24	2499-24
M12™ 1/4" Hex Screwdriver	■									■					
M12 FUEL™ 1/2" Hammer Drill/Driver									■						
M12™ 3/8" Hammer Drill/Driver						■									
M12 FUEL™ 1/2" Drill/Driver								■							
M12™ 3/8" Drill/Driver			■	■	■					■		■	■	■	■
M12™ 3/8" Right Angle Drill/Driver												■			
M12 FUEL™ 1/4" Hex Impact Driver								■	■						
M12™ 1/4" Hex Impact Driver		■		■		■						■	■		
M12™ 3/8" Impact Wrench									■	■					
M12™ HACKZALL® Recip Saw	■	■											■	■	■
M12™ Multi-Tool					■								■		
M12™ 1/4" Ratchet											■				
M12™ Copper Tubing Cutter												■			■
M12™ TRAPSAKE™ 6' Toilet Auger							■								
TRAPSAKE™ 4' Urinal Auger Extension							■								
M12™ M-SPECTOR 360™ Rotating Inspection Scope													■		
M12™ Flashlight									■	■	■	■	■	■	■
M12™ Jobsite Radio			■										■		
Also Includes															
M12™ LITHIUM-ION Battery Charger	■	■	■	■	■	■	■	■	■	■	■	■	■	■	■
M12™ REDLITHIUM™ Compact Battery Pack	2	2	2	2	2	2	1			2	2	2	2	2	2
M12™ REDLITHIUM™ XC Extended Capacity Battery Pack												1			
M12™ REDLITHIUM™ 2.0 Compact Battery Pack								1	1						
M12™ REDLITHIUM™ XC4.0 Extended Capacity Battery Pack								1	1						
Carrying Case								■	■						
Contractor Bag	■	■	■	■	■	■				■	■	■	■	■	■

M18 M12
RAPID CHARGER

- Charges All M18™ and M12™ Batteries
- Charges Batteries Sequentially (First In, First Charged)

CHARGES PACKS UP TO 40% FASTER



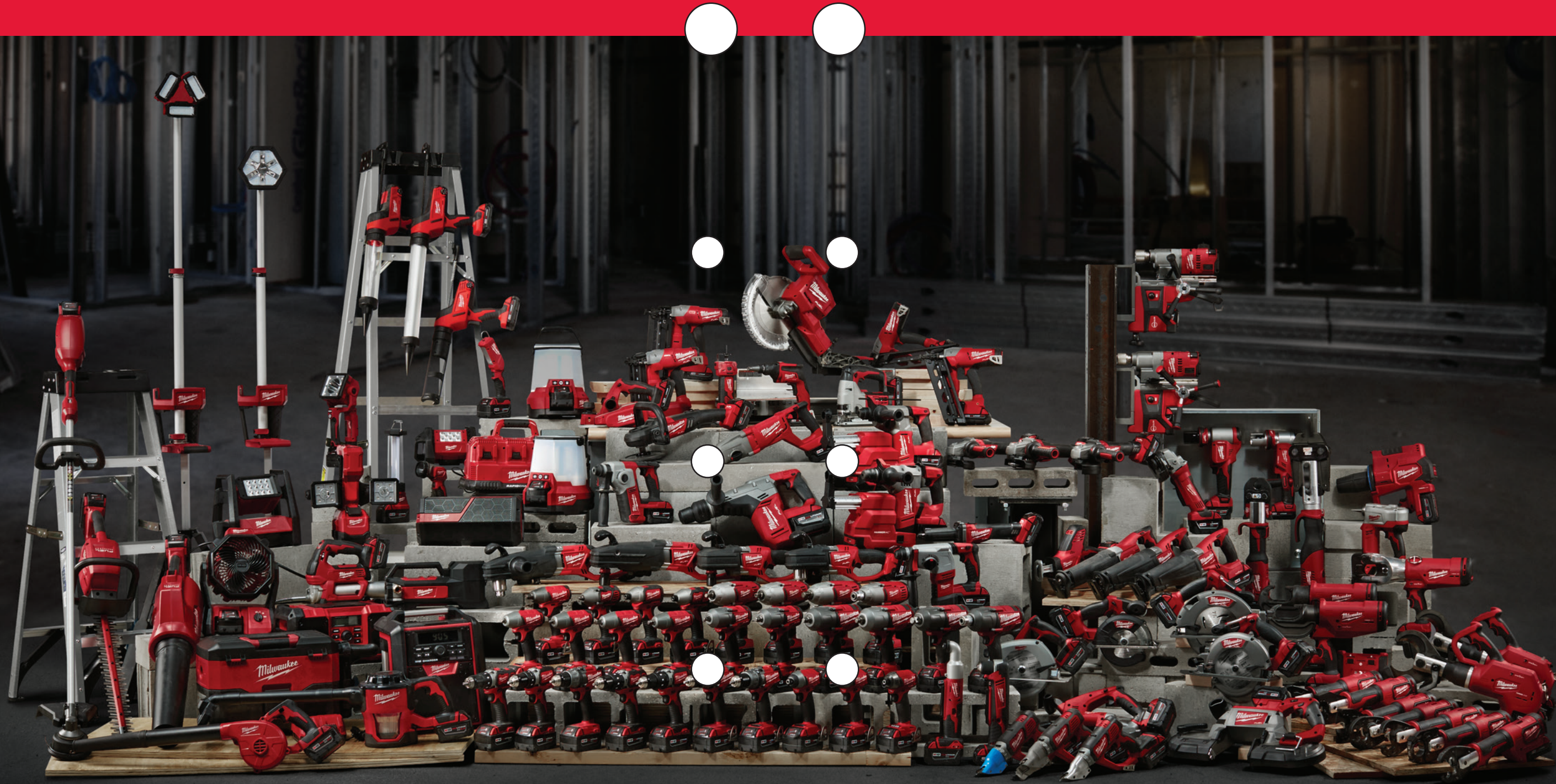
REDLITHIUM™ 3.0/XC6.0

- Up to 3X More Run-Time
- Up to 20% More Power
- Over 2X More Life



NUMBER 1 SUBCOMPACT SYSTEM ON THE MARKET





M18

**PERFORMANCE DRIVEN
TRADE FOCUSED
SYSTEM WIDE**

The MILWAUKEE® M18™ cordless system represents the ultimate synergy of professional grade power, extreme performance and superior ergonomics. Powered by REDLITHIUM™ battery technology for unmatched run-time, and coupled with patented technologies, innovative motors and advanced electronics, M18™ changes the game. Focused on improving productivity for professionals in the trades, MILWAUKEE® offers more than 125 performance-driven solutions that are fully compatible with the M18™ family—the fastest growing 18V cordless system on the market.



DRIVEN TO OUTPERFORM.™

For the first time in power tool history, M18 FUEL™ products are delivering game-changing corded performance without the cord. The motors on MILWAUKEE® M18 FUEL™ tools are more powerful and energy efficient—outliving any other brand. To add to the revolutionary technology, M18 FUEL™ possesses the smartest electronics found in any power tool. REDLINK PLUS™ electronics manage an array of power requirements across more than 125 M18™ tools using one common battery. MILWAUKEE® built, the M18™ battery delivers cleaner, more consistent power, lasts longer and delivers more run-time in the harshest jobsite conditions.

M18 FUEL™. Feel the Difference.

M18 FUEL

LONGER MOTOR LIFE | **MORE** POWER | **MORE** RUN-TIME

NOW AVAILABLE



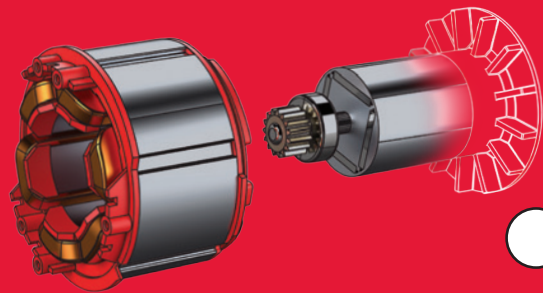
REDLITHIUM
HIGH DEMAND 9.0

UP TO **5X** MORE RUN-TIME
UP TO **35%** MORE POWER
RUNS UP TO **60%** COOLER

1 POWERSTATE™ BRUSHLESS MOTOR

This best-in-class brushless motor works harder and lives longer than all leading competitors.

- MILWAUKEE® Designed and Built Brushless Motor
- Outperforms All Leading Competitors
- Longer Motor Life



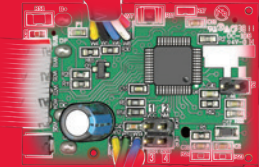
5
YEAR WARRANTY



2 REDLINK PLUS™ INTELLIGENCE

The most advanced system of hardware and software in cordless power tool electronics today.

- Most Advanced Electronic System on the Market for Maximum Performance
- Total System Communication with Overload Protection Increases Tool Life



3 REDLITHIUM™ XC5.0 BATTERY PACK

Compatible with the entire M18™ system, it delivers more run-time, power and recharges than the competition.

- Most Durable Pack on the Market
- Over 2X More Recharges than Leading Competitor
- Fuel Gauge Displays Remaining Charge
- Operates Below -18°C / 0°F



M18
SYSTEM

M18 FUEL
1/2" Hammer Drill/Driver w/ ONE-KEY™ Kit

2706-22 (2706-20 Tool-Only)

Specifications:

Peak Torque	1,200 in-lbs
RPM	0 – 550 / 0 – 2,000
BPM	0 – 32,000
DRIVE CONTROL™	4-Mode (Customizable)
Chuck Type	1/2" Metal Single Sleeve – Ratcheting Lock
Length	7-3/5"
Weight	4.9 lbs

Includes: (2) M18™ REDLITHIUM™ XC5.0 Extended Capacity Battery Packs, Belt Clip, Bit Holder, Side Handle, Multi-Voltage Charger, Carrying Case



M18™ 1/2" Hammer Drill/Driver Kit

2607-22, 2607-22CT (2607-20 Tool-Only)

Specifications:

Peak Torque	525 in-lbs
RPM	0 – 450 / 0 – 1,800
BPM	0 – 28,800
Chuck Type	1/2" Metal Single Sleeve – Ratcheting Lock
Length	7-3/4"
Weight	4.5 lbs

Includes: 2607-22 (2) M18™ REDLITHIUM™ XC Extended Capacity Battery Packs, Multi-Voltage Charger, Carrying Case; 2607-22CT Includes (2) M18™ REDLITHIUM™ Compact Battery Packs



M18 FUEL
1/2" Hammer Drill/Driver Kit

2704-22 (2704-20 Tool-Only)

Specifications:

Peak Torque	1,200 in-lbs
RPM	0 – 550 / 0 – 2,000
BPM	0 – 32,000
Chuck Type	1/2" Metal Single Sleeve – Ratcheting Lock
Length	7-3/4"
Weight	4.9 lbs

Includes: (2) M18™ REDLITHIUM™ XC5.0 Extended Capacity Battery Packs, Belt Clip, Bit Holder, Side Handle, Multi-Voltage Charger, Carrying Case



M18 FUEL
1/2" Drill/Driver w/ ONE-KEY™ Kit

2705-22 (2705-20 Tool-Only)

Specifications:

Peak Torque	1,200 in-lbs
RPM	0 – 550 / 0 – 2,000
DRIVE CONTROL™	4-Mode (Customizable)
Chuck Type	1/2" Metal Single Sleeve – Ratcheting Lock
Length	7-1/5"
Weight	4.8 lbs

Includes: (2) M18™ REDLITHIUM™ XC5.0 Extended Capacity Battery Packs, Belt Clip, Bit Holder, Side Handle, Multi-Voltage Charger, Carrying Case



M18™ 1/2" Compact Brushless Hammer Drill/Driver Kit

2702-22CT (2702-20 Tool-Only)

Specifications:

Peak Torque	1,500 in-lbs
RPM	0 – 450 / 0 – 1,800
BPM	0 – 28,800
Chuck Type	1/2" Metal Single Sleeve – Ratcheting Lock
Length	7-3/8"
Weight	3.8 lbs

Includes: (2) M18™ REDLITHIUM™ 2.0 Compact Battery Packs, Multi-Voltage Charger, Carrying Case



M18 FUEL
1/2" Drill/Driver Kit

2703-22 (2703-20 Tool-Only)

Specifications:

Peak Torque	1,200 in-lbs
RPM	0 – 550 / 0 – 2,000
Chuck type	1/2" Metal Single Sleeve – Ratcheting Lock
Length	7-1/2"
Weight	4.9 lbs

Includes: (2) M18™ REDLITHIUM™ XC5.0 Extended Capacity Battery Packs, Belt Clip, Bit Holder, Side Handle, Multi-Voltage Charger, Carrying Case



M18™ 3/8" Right Angle Drill/Driver Kit

2615-21, 2615-21CT (2615-20 Tool-Only)

Specifications:

Peak Torque	125 in-lbs
RPM	0 – 1,500
Clutch Settings	11 Settings plus Drill Mode
Chuck Type	3/8" Single Sleeve
Head Profile	3-3/4"
Weight	4.3 lbs

Includes: 2615-21 (1) M18™ REDLITHIUM™ XC Extended Capacity Battery Pack, Multi-Voltage Charger, Carrying Case; 2615-21CT Includes (1) M18™ REDLITHIUM™ Compact Battery Pack



M18™ 1/2" Compact Brushless Drill/Driver Kit

2701-22CT (2701-20 Tool-Only)

Specifications:

Peak Torque	500 in-lbs
RPM	0 – 450 / 0 – 1,800
Chuck Type	1/2" Metal Single Sleeve – Ratcheting Lock
Length	6-7/8"
Weight	3.7 lbs

Includes: (2) M18™ REDLITHIUM™ 2.0 Compact Battery Packs, Multi-Voltage Charger, Carrying Case



M18™ 1/2" Compact Drill/Driver Kit

2606-22CT (2606-20 Tool-Only)

Specifications:

Peak Torque	500 in-lbs
RPM	0 – 450 / 0 – 1,800
Chuck Type	1/2" Metal Single Sleeve – Ratcheting Lock
Length	7-1/4"
Weight	3.8 lbs

Includes: (2) M18™ REDLITHIUM™ Compact Battery Packs, Multi-Voltage Charger, Carrying Case



M18 FUEL
Drywall Screw Gun Kit

2866-22, 2866-22CT (2866-20 Tool-Only)

Specifications:

RPM	0 – 4,500
Belt Clip	Yes
Auto Start Mode	Yes
Length	9"
Weight	4.1 lbs

Includes: 2866-22 (2) M18™ REDLITHIUM™ XC5.0 Extended Capacity Battery Packs, Belt Clip, PR2 Bit, Multi-Voltage Charger, Contractor Bag; 2866-22CT Includes (2) M18™ REDLITHIUM™ 2.0 Compact Battery Packs



Related Accessory:
49-20-0001 MILWAUKEE® Collated Magazine
Screw Capacity: Up to 2"
Compatible with all major screw brands



M18 FUEL HOLE HAWG® Right Angle Drill Kit w/ QUIK-LOK™

2708-22HD, 2708-22 (2708-20 Tool-Only)

Specifications:

RPM	0 – 1,200
Chuck Type	7/16" Hex QUIK-LOK™
Capacity	For Augers up to 1-1/4"; Self-Feed Bits up to 2"
Length	17"
Weight	9.3 lbs

Includes: 2708-22HD (2) M18™ REDLITHIUM™ HIGH DEMAND™ 9.0 Battery Packs, Rapid Charger, Carrying Case; 2708-22 Includes (2) M18™ REDLITHIUM™ XC5.0 Extended Capacity Battery Packs, Multi-Voltage Charger



M18 FUEL HOLE HAWG® 1/2" Right Angle Drill Kit

2707-22HD, 2707-22 (2707-20 Tool-Only)

Specifications:

RPM	0 – 1,200
Chuck Type	1/2" Metal Keyed
Capacity	For Augers up to 1-1/4"; Self-Feed Bits up to 2"
Length	17"
Weight	9.8 lbs

Includes: 2707-22HD (2) M18™ REDLITHIUM™ HIGH DEMAND™ 9.0 Battery Packs, Chuck Key, Rapid Charger, Carrying Case; 2707-22 Includes (2) M18™ REDLITHIUM™ XC5.0 Extended Capacity Battery Packs, Multi-Voltage Charger



M18 FUEL SUPER HAWG™ Right Angle Drill Kit w/ QUIK-LOK™

2711-22HD, 2711-22 (2711-20 Tool-Only)

Specifications:

RPM	0 – 350 / 0 – 950
Chuck Type	7/16" Hex QUIK-LOK™
Capacity	For Self-Feed Bits up to 4-5/8"; Hole Saws up to 6"
Mechanical Clutch	Yes
Length	22"
Weight	14.8 lbs

Includes: 2711-22HD (2) M18™ REDLITHIUM™ HIGH DEMAND™ 9.0 Battery Packs, Side Handle, Rapid Charger, Contractor Bag; 2711-22 Includes (2) M18™ REDLITHIUM™ XC5.0 Extended Capacity Battery Packs



M18 FUEL SUPER HAWG™ 1/2" Right Angle Drill Kit

2709-22HD, 2709-22 (2709-20 Tool-Only)

Specifications:

RPM	0 – 350 / 0 – 950
Chuck Type	1/2" Metal Keyed
Capacity	For Self-Feed Bits up to 4-5/8"; Hole Saws up to 6"
Mechanical Clutch	Yes
Length	22"
Weight	14.9 lbs

Includes: 2709-22HD (2) M18™ REDLITHIUM™ HIGH DEMAND™ 9.0 Battery Packs, Chuck Key, Side Handle, Rapid Charger, Contractor Bag; 2709-22 Includes (2) M18™ REDLITHIUM™ XC5.0 Extended Capacity Battery Packs



M18 FUEL 1-1/2" Magnetic Drill Kit

2787-22HD

Specifications:

Capacity	1-1/2" Annular Cutter; 1/2" Twist Bit
RPM	400 / 690
Magnet	Operates Without Electricity
Dimensions (L x W x H)	13-3/4" x 7-1/2" x 15-1/2"
Weight	30.4 lbs

Includes: (2) M18™ REDLITHIUM™ HIGH DEMAND™ 9.0 Battery Packs, Magnetic Lubrication Tank, 3/4" Weldon to 1/2" Chuck Adapter, Chuck Key, (2) 1" Retracting Pilot Pins, Safety Strap, Rapid Charger, Carrying Case



M18 FUEL 1-1/2" Lineman Magnetic Drill Kit

2788-22HD

Specifications:

Capacity	1-1/2" Annular Cutter; 1/2" Twist Bit
RPM	400 / 690
Magnet	Operates Without Electricity
Dimensions (L x W x H)	13-3/4" x 7-1/2" x 15-1/2"
Weight	30.4 lbs

Includes: (2) M18™ REDLITHIUM™ HIGH DEMAND™ 9.0 Battery Packs, Magnetic Lubrication Tank, 3/4" Weldon to 1/2" Chuck Adapter, Chuck Key, (2) 1" Retracting Pilot Pins, Safety Strap, AC/DC Wall and Vehicle Charger, Carrying Case



M18 FUEL 1-9/16" SDS Max Rotary Hammer Kit

2717-22HD (2717-20 Tool-Only)

Specifications:

RPM	0 – 440
BPM	0 – 3,000
Impact Energy	5.0 ft-lbs
2-Mode Operation	Rotary Hammer and Hammer Only
Weight	13.75 lbs

Includes: (2) M18™ REDLITHIUM™ HIGH DEMAND™ 9.0 Battery Packs, Side Handle, Depth Rod, Rapid Charger, Carrying Case

Related Accessory: 2306-22 M12™ HAMMERVAC™ Universal Dust Extractor



M18 FUEL 1-1/8" SDS Plus Rotary Hammer Kit

2715-22HD, 2715-22, 2715-22DE (2715-20 Tool-Only)

Specifications:

RPM	0 – 1,350
BPM	0 – 5,000
Impact Energy	3.3 ft-lbs
3-Mode Operation	Rotary Hammer, Hammer Only and Rotation Only
Weight	10.1 lbs

Includes: 2715-22HD (2) M18™ REDLITHIUM™ HIGH DEMAND™ 9.0 Battery Packs, Slide Handle, Depth Rod, Rapid Charger, Carrying Case; 2715-22 Includes (2) M18™ REDLITHIUM™ XC5.0 Extended Capacity Battery Packs, Multi-Voltage Charger; 2715-22DE Includes (2) M18™ REDLITHIUM™ XC5.0 Extended Capacity Battery Packs, HAMMERVAC™ Dedicated Dust Extractor, HEPA Filter, Replacement Nozzle, Multi-Voltage Charger



HAMMERVAC™ Dedicated Dust Extractor

2715-DE

Specifications:

Compatibility	For use with 2715-20
In-Line Dedicated Design	Engineered to Fit in the Most Confined Workspaces
Adjustable Depth Stop and Ruler	Easily and Precisely Adjust for Accurate Hole Depths
Replaceable Certified HEPA Filter	Filters 99.97% of Debris 0.3 Microns and Above
Max Bit Size	5/8"

Includes: Replacement Nozzle and HEPA Filter



M18 FUEL 1" SDS Plus Rotary Hammer Kit

2712-22HD, 2712-22, 2712-22DE (2712-20 Tool-Only)

Specifications:

RPM	0 – 1,400
BPM	0 – 4,900
Impact Energy	1.7 ft-lbs
3-Mode Operation	Rotary Hammer, Hammer Only and Rotation Only
Weight	9.4 lbs

Includes: 2712-22HD (2) M18™ REDLITHIUM™ HIGH DEMAND™ 9.0 Battery Packs, Slide Handle, Depth Rod, Rapid Charger, Carrying Case; 2712-22 Includes (2) M18™ REDLITHIUM™ XC5.0 Extended Capacity Battery Packs, Multi-Voltage Charger; 2712-22DE Includes (2) M18™ REDLITHIUM™ XC5.0 Extended Capacity Battery Packs, HAMMERVAC™ Dedicated Dust Extractor, HEPA Filter, Replacement Nozzle, Multi-Voltage Charger



HAMMERVAC™ Dedicated Dust Extractor

2712-DE

Specifications:

Compatibility	For use with 2712-20
In-Line Dedicated Design	Engineered to Fit in the Most Confined Workspaces
Adjustable Depth Stop and Ruler	Easily and Precisely Adjust for Accurate Hole Depths
Replaceable Certified HEPA Filter	Filters 99.97% of Debris 0.3 Microns and Above
Max Bit Size	5/8"

Includes: Replacement Nozzle and HEPA Filter



M18 FUEL 1" SDS Plus D-Handle Rotary Hammer Kit

2713-22HD, 2713-22 (2713-20 Tool-Only)

Specifications:

Capacity	1"
Impact Energy	2.15 ft-lbs
RPM	0 – 1,500
BPM	0 – 4,400
Length	16-1/2"
Weight	8.5 lbs

Includes: 2713-22HD (2) M18™ REDLITHIUM™ HIGH DEMAND™ 9.0 Battery Packs, Slide Handle, Depth Rod, Rapid Charger, Carrying Case; 2713-22 Includes (2) M18™ REDLITHIUM™ XC5.0 Extended Capacity Battery Packs, Multi-Voltage Charger



M18™ 7/8" SDS Plus Rotary Hammer Kit

2605-22 (2605-20 Tool-Only)

Specifications:

RPM	0 – 1,400
BPM	0 – 4,800
Impact Energy	1.4 ft-lbs
3-Mode Operation	Hammer Only, Rotary Hammer and Rotation Only
Weight	7.2 lbs

Includes: (2) M18™ REDLITHIUM™ XC Extended Capacity Battery Packs, Side Handle, Depth Rod, Multi-Voltage Charger, Carrying Case

Related Accessory: 2306-22 M12™ HAMMERVAC™ Universal Dust Extractor



M18™ 5/8" SDS Plus Rotary Hammer Kit

2612-22, 2612-21 (2612-20 Tool-Only)

Specifications:

RPM	0 – 1,300
BPM	0 – 7,000
Impact Energy	1.0 ft-lbs
2-Mode Operation	Rotary Hammer and Rotation Only
Weight	5.5 lbs

Includes: 2612-22 (2) M18™ REDLITHIUM™ XC Extended Capacity Battery Packs, Side Handle, Depth Rod, Multi-Voltage Charger, Carrying Case; 2612-21 Includes (1) M18™ REDLITHIUM™ XC Extended Capacity Battery Pack

Related Accessory: 2306-22 M12™ HAMMERVAC™ Universal Dust Extractor



M18 FUEL
1/4" Hex Impact Driver w/ ONE-KEY™ Kit

2757-22, 2757-22CT (2757-20 Tool-Only)

Specifications:

Fastening Torque	1,800 in-lbs
IPM	0 – 3,700
RPM	0 – 3,000
DRIVE CONTROL™	4-Mode (Customizable)
Chuck Type	1/4" Hex
Length	5-1/4"
Weight	4.0 lbs

Includes: 2757-22 (2) M18™ REDLITHIUM™ XC5.0 Extended Capacity Battery Packs, Belt Clip, Bit Holder, Multi-Voltage Charger, Carrying Case; 2757-22CT Includes (2) M18™ REDLITHIUM™ 2.0 Compact Battery Packs



M18 FUEL
1/4" Hex Impact Driver Kit

2753-22, 2753-22CT (2753-20 Tool-Only)

Specifications:

Fastening Torque	1,800 in-lbs
IPM	0 – 3,700
RPM	0 – 3,000
DRIVE CONTROL™	4-Mode
Chuck Type	1/4" Hex
Length	5-1/4"
Weight	3.9 lbs

Includes: 2753-22 (2) M18™ REDLITHIUM™ XC5.0 Extended Capacity Battery Packs, Belt Clip, Bit Holder, Multi-Voltage Charger, Carrying Case; 2753-22CT Includes (2) M18™ REDLITHIUM™ 2.0 Compact Battery Packs



M18™ 1/4" Hex Brushless Impact Driver Kit

2750-22CT (2750-20 Tool-Only)

Specifications:

Fastening Torque	1,500 in-lbs
IPM	0 – 3,600
RPM	0 – 2,900
Chuck Type	1/4" Hex
Length	5-3/8"
Weight	3.1 lbs

Includes: (2) M18™ REDLITHIUM™ 2.0 Compact Capacity Battery Packs, Belt Clip, Multi-Voltage Charger, Carrying Case



M18 FUEL
SURGE™ 1/4" Hex Hydraulic Driver Kit

2760-22, 2760-22CT (2760-20 Tool-Only)

Specifications:

Sustained Fastening Torque	450 in-lbs
IPM	0 – 4,000
RPM	0 – 3,000
DRIVE CONTROL™	4-Mode
Length	5"
Weight	3.9 lbs

Includes: 2760-22 (2) M18™ REDLITHIUM™ XC5.0 Extended Capacity Battery Packs, Belt Clip, Bit Holder, Multi-Voltage Charger, Carrying Case; 2760-22CT Includes (2) M18™ REDLITHIUM™ 2.0 Battery Packs



M18™ 1/4" Hex Compact Impact Driver Kit

2656-22CT (2656-20 Tool-Only)

Specifications:

Fastening Torque	1,500 in-lbs
IPM	0 – 3,450
RPM	0 – 2,750
Chuck Type	1/4" Hex Quick Change
Length	5-1/2"
Weight	3.8 lbs

Includes: 2657-22 (2) M18™ REDLITHIUM™ Compact Battery Packs, Belt Clip, Multi-Voltage Charger, Carrying Case



M18™ 1/4" 2-Speed Impact Driver Kit

2657-22, 2657-22CT (2657-20 Tool-Only)

Specifications:

Fastening Torque	1,500 in-lbs
IPM	0 – 3,450
RPM	0 – 2,750
Chuck Type	1/4" Hex Quick Change
Length	5-1/2"
Weight	3.8 lbs

Includes: 2657-22 (2) M18™ REDLITHIUM™ XC Extended Capacity Battery Packs, Belt Clip, Multi-Voltage Charger, Carrying Case; 2657-22CT Includes (2) M18™ REDLITHIUM™ Compact Battery Packs



M18 FUEL
3/8" Impact Wrench w/ Friction Ring w/ ONE-KEY™ Kit

2758-22, 2758-22CT (2758-20 Tool-Only)

Specifications:

Fastening Torque	210 ft-lbs
IPM	0 – 3,200
RPM	0 – 2,500
DRIVE CONTROL™	4-Mode (Customizable)
Chuck Type	3/8" Friction Ring
Length	5-9/10"
Weight	4.2 lbs

Includes: 2758-22 (2) M18™ REDLITHIUM™ XC5.0 Extended Capacity Battery Packs, Belt Clip, Bit Holder, Multi-Voltage Charger, Carrying Case; 2758-22CT Includes (2) M18™ REDLITHIUM™ 2.0 Compact Battery Packs



M18 FUEL
3/8" Compact Impact Wrench w/ Friction Ring Kit

2754-22, 2754-22CT (2754-20 Tool-Only)

Specifications:

Fastening Torque	210 ft-lbs
IPM	0 – 3,200
RPM	0 – 2,500
DRIVE CONTROL™	4-Mode
Chuck Type	3/8" Friction Ring
Length	5-9/10"
Weight	4.2 lbs

Includes: 2754-22 (2) M18™ REDLITHIUM™ XC5.0 Extended Capacity Battery Packs, Belt Clip, Bit Holder, Multi-Voltage Charger, Carrying Case; 2754-22CT Includes (2) M18™ REDLITHIUM™ 2.0 Compact Battery Packs



M18™ 3/8" Compact Impact Wrench Kit

2658-22, 2658-22CT (2658-20 Tool-Only)

Specifications:

Fastening Torque	167 ft-lbs
IPM	0 – 3,350
RPM	0 – 2,450
Anvil	3/8" Friction Ring
Length	6"
Weight	4.1 lbs

Includes: 2658-22 (2) M18™ REDLITHIUM™ XC Extended Capacity Battery Packs, Belt Clip, Multi-Voltage Charger, Carrying Case; 2658-22CT Includes (2) M18™ REDLITHIUM™ Compact Battery Packs



M18 FUEL
1/2" Compact Impact Wrench w/ Pin Detent w/ ONE-KEY™ Kit

2759-22, 2759B-22 (2759-20, 2759B-20 Tool-Only)

Specifications:

Fastening Torque	220 ft-lbs
IPM	0 – 3,200
RPM	0 – 2,500
DRIVE CONTROL™	4-Mode (Customizable)
Chuck Type	1/2" Pin Detent
Length	6-1/10"
Weight	4.2 lbs

Includes: 2759-22 (2) M18™ REDLITHIUM™ XC5.0 Extended Capacity Battery Packs, Belt Clip, Bit Holder, Multi-Voltage Charger, Carrying Case; 2759B-22 1/2" Compact Impact Wrench w/ Friction Ring w/ ONE-KEY™ Kit



M18 FUEL
1/2" Compact Impact Wrench w/ Pin Detent Kit

2755-22, 2755B-22 (2755-20, 2755B-20 Tool-Only)

Specifications:

Fastening Torque	220 ft-lbs
IPM	0 – 3,200
RPM	0 – 2,500
DRIVE CONTROL™	4-Mode
Chuck Type	1/2" Pin Detent
Length	6-1/10"
Weight	4.2 lbs

Includes: 2755-22 (2) M18™ REDLITHIUM™ XC5.0 Extended Capacity Battery Packs, Belt Clip, Bit Holder, Multi-Voltage Charger, Carrying Case; 2755B-22 1/2" Compact Impact Wrench w/ Friction Ring Kit



M18™ 1/2" Compact Impact Wrench Kit

2659-22 (2659-20 Tool-Only)

Specifications:

Fastening Torque	183 ft-lbs
IPM	0 – 3,350
RPM	0 – 2,450
Anvil	1/2" Pin Detent
Length	6"
Weight	4.1 lbs

Includes: (2) M18™ REDLITHIUM™ XC Extended Capacity Battery Packs, Belt Clip, Multi-Voltage Charger, Carrying Case



M18™ Right Angle Impact Wrench Kit

2668-22, 2668-21CT (2668-20 Tool-Only)

Specifications:

Fastening Torque (2-Mode)	30 / 60 ft-lbs
IPM	0 – 2,400 / 0 – 3,400
RPM	0 – 1,500 / 0 – 2,250
Chuck Type	3/8"
Length	14-1/4"
Weight	3.9 lbs

Includes: 2668-22 (2) M18™ REDLITHIUM™ XC Extended Capacity Battery Packs, Belt Clip, Multi-Voltage Charger, Carrying Case; 2668-21CT Includes (1) M18™ REDLITHIUM™ Compact Battery Pack



M18™ Right Angle Impact Driver Kit

2667-22, 2667-21CT (2667-20 Tool-Only)

Specifications:

Fastening Torque (2-Mode)	350 / 675 in-lbs
IPM	0 – 2,400 / 0 – 3,400
RPM	0 – 1,500 / 0 – 2,250
Chuck Type	1/4" Hex
Length	14-1/8"
Weight	3.9 lbs

Includes: 2667-22 (2) M18™ REDLITHIUM™ XC Extended Capacity Battery Packs, Belt Clip, Multi-Voltage Charger, Carrying Case; 2667-21CT Includes (1) M18™ REDLITHIUM™ Compact Battery Pack



M18 FUEL™ 1/2" Mid-Torque Impact Wrench w/ Pin Detent Kit

2860-22 (2860-20 Tool-Only)

Specifications:

Fastening Torque	450 ft-lbs
Nut Busting Torque	600 ft-lbs
IPM	0 – 3,000
RPM	0 – 2,400
Chuck Type	1/2" Pin Detent
Length	6-7/10"
Weight	5.3 lbs

Includes: (2) M18™ REDLITHIUM™ XC5.0 Battery Packs, Belt Clip, Multi-Voltage Charger, Carrying Case



M18 FUEL™ 1/2" Mid-Torque Impact Wrench w/ Friction Ring Kit

2861-22 (2861-20 Tool-Only)

Specifications:

Fastening Torque	450 ft-lbs
Nut Busting Torque	600 ft-lbs
IPM	0 – 3,000
RPM	0 – 2,400
Chuck Type	1/2" Friction Ring
Length	6-7/10"
Weight	5.3 lbs

Includes: (2) M18™ REDLITHIUM™ XC5.0 Battery Packs, Belt Clip, Multi-Voltage Charger, Carrying Case



M18 FUEL™ 1/2" High Torque Impact Wrench w/ Pin Detent Kit

2762-22 (2762-20 Tool-Only)

Specifications:

Max Fastening Torque (2-Mode)	350 / 600 ft-lbs
Nut-Busting Torque	900 ft-lbs
IPM	0 – 2,300
RPM (2-Mode)	0 – 1,200 / 0 – 1,700
Anvil	1/2" Pin Detent
Length	8-3/4"
Weight	7.3 lbs

Includes: (2) M18™ REDLITHIUM™ XC5.0 Extended Capacity Battery Packs, Multi-Voltage Charger, Carrying Case



M18™ 1/2" High Torque Impact Wrench w/ Pin Detent Kit

2662-22 (2662-20 Tool-Only)

Specifications:

Fastening Torque	450 ft-lbs
Breakaway Torque	640 ft-lbs
IPM	0 – 2,200
RPM	0 – 1,900
Anvil	1/2" Pin Detent
Length	8-7/8"
Weight	6.7 lbs

Includes: (2) M18™ REDLITHIUM™ XC Extended Capacity Battery Packs, Multi-Voltage Charger, Carrying Case



M18 FUEL™ 1/2" High Torque Impact Wrench w/ Friction Ring Kit

2763-22 (2763-20 Tool-Only)

Specifications:

Max Fastening Torque (2-Mode)	100 / 700 ft-lbs
Nut-Busting Torque	1,100 ft-lbs
IPM	0 – 2,300
RPM (2-Mode)	0 – 350 / 0 – 1,700
Anvil	1/2" Friction Ring
Length	9"
Weight	7.5 lbs

Includes: (2) M18™ REDLITHIUM™ XC5.0 Extended Capacity Battery Packs, Multi-Voltage Charger, Carrying Case



M18™ 1/2" High Torque Impact Wrench w/ Friction Ring Kit

2663-22 (2663-20 Tool-Only)

Specifications:

Fastening Torque	450 ft-lbs
Breakaway Torque	640 ft-lbs
IPM	0 – 2,200
RPM	0 – 1,900
Anvil	1/2" Friction Ring
Length	8-7/8"
Weight	6.7 lbs

Includes: (2) M18™ REDLITHIUM™ XC Extended Capacity Battery Packs, Multi-Voltage Charger, Carrying Case



M18 FUEL™ 3/4" High Torque Impact Wrench w/ Friction Ring Kit

2764-22 (2764-20 Tool-Only)

Specifications:

Max Fastening Torque (2-Mode)	375 / 750 ft-lbs
Nut-Busting Torque	1,200 ft-lbs
IPM	0 – 2,300
RPM (2-Mode)	0 – 1,200 / 0 – 1,700
Anvil	3/4" Friction Ring
Length	9"
Weight	7.5 lbs

Includes: (2) M18™ REDLITHIUM™ XC5.0 Extended Capacity Battery Packs, Multi-Voltage Charger, Carrying Case



M18™ 3/4" High Torque Impact Wrench w/ Friction Ring Kit

2664-22 (2664-20 Tool-Only)

Specifications:

Fastening Torque	525 ft-lbs
Breakaway Torque	700 ft-lbs
IPM	0 – 2,200
RPM	0 – 1,900
Anvil	3/4" Friction Ring
Length	9"
Weight	6.8 lbs

Includes: (2) M18™ REDLITHIUM™ XC Extended Capacity Battery Packs, Multi-Voltage Charger, Carrying Case



M18 FUEL
7/16" Hex Utility High Torque Impact Kit

2765-22 (2765-20 Tool-Only)

Specifications:

Max Fastening Torque (2-Mode)	300 / 500 ft-lbs
IPM	0 – 2,300
RPM (2-Mode)	0 – 1,200 / 0 – 1,700
Anvil	7/16" Hex
Length	8-3/4"
Weight	7.1 lbs

Includes: (2) M18™ REDLITHIUM™ XC5.0 Extended Capacity Battery Packs, Hanger Ring, Banger Bracket, AC/DC Wall and Vehicle Charger, Contractor Bag



M18™ 7/16" Hex Utility High Torque Impact Kit

2665-22 (2665-20 Tool-Only)

Specifications:

Fastening Torque	350 ft-lbs
IPM	0 – 2,200
RPM	0 – 1,900
Anvil	7/16" Hex
Length	9-1/2"
Weight	7.0 lbs

Includes: (2) M18™ REDLITHIUM™ XC Extended Capacity Battery Packs, Multi-Voltage Charger, Contractor Bag



M18 FUEL
SAWZALL® Recip Saw w/ ONE-KEY™ Kit

2721-22HD, 2721-22 (2721-20 Tool-Only)

Specifications:

SPM	0 – 3,000
Stroke Length	1-1/8"
Blade Clamp	Lever-Action QUIK-LOK™ (Accepts all SAWZALL® Blades)
Cut Control	4-Mode (Customizable)
Anti-Vibration	Yes
Weight	8.9 lbs

Includes: 2721-22HD (2) M18™ REDLITHIUM™ HIGH DEMAND™ 9.0 Battery Packs, Blade, Rapid Charger, Carrying Case; 2721-22 Includes (2) M18™ REDLITHIUM™ XC5.0 Extended Capacity Battery Packs, Multi-Voltage Charger



M18 FUEL
SAWZALL® Recip Saw Kit

2720-22HD, 2720-22, 2720-21 (2720-20 Tool-Only)

Specifications:

SPM	0 – 3,000
Stroke Length	1-1/8"
Blade Clamp	Lever-Action QUIK-LOK™ (Accepts all SAWZALL® Blades)
Anti-Vibration	Yes
Weight	9.8 lbs

Includes: 2720-22HD (2) M18™ REDLITHIUM™ HIGH DEMAND™ 9.0 Battery Packs, Blade, Rapid Charger, Carrying Case; 2720-22 Includes (2) M18™ REDLITHIUM™ XC5.0 Extended Capacity Battery Packs, Multi-Voltage Charger; 2720-21 Includes (1) M18™ REDLITHIUM™ XC5.0 Extended Capacity Battery Pack, Multi-Voltage Charger



M18™ SAWZALL® Recip Saw Kit

2621-22, 2621-21 (2621-20 Tool-Only)

Specifications:

SPM	0 – 3,000
Stroke Length	1-1/8"
Blade Clamp	Lever-Action QUIK-LOK™ (Accepts all SAWZALL® Blades)
Anti-Vibration	Yes
Weight	7.9 lbs

Includes: 2621-22 (2) M18™ REDLITHIUM™ XC Extended Capacity Battery Packs, Blade, Multi-Voltage Charger, Carrying Case; 2621-21 Includes (1) M18™ REDLITHIUM™ XC Extended Capacity Battery Pack



M18™ HACKZALL® One-Handed Recip Saw Kit

2625-21, 2625-21CT (2625-20 Tool-Only)

Specifications:

SPM	0 – 3,000
Stroke Length	3/4"
Blade Clamp	QUIK-LOK™ (Accepts all SAWZALL® Blades)
Anti-Vibration	Yes
Weight	5.6 lbs

Includes: 2625-21 (1) M18™ REDLITHIUM™ XC Extended Capacity Battery Pack, Blade, Multi-Voltage Charger, Contractor Bag; 2625-21CT Includes (1) M18™ REDLITHIUM™ Compact Battery Pack



M18 FUEL
7-1/4" Circular Saw Kit

2731-22HD, 2731-22, 2731-21 (2731-20 Tool-Only)

Specifications:

RPM	5,000
Bevel Capacity	50°
Cut Capacity	2-1/2" at 90°; 1-7/8" at 45°
Arbor	5/8"
Blade Guards	Magnesium
Weight	9.9 lbs

Includes: 2731-22HD (2) M18™ REDLITHIUM™ HIGH DEMAND™ 9.0 Battery Packs, Circular Saw Blade, Wrench, Rapid Charger, Contractor Bag; 2731-22 Includes (2) M18™ REDLITHIUM™ XC5.0 Extended Capacity Battery Packs, Multi-Voltage Charger; 2731-21 Includes (1) M18™ REDLITHIUM™ XC5.0 Extended Capacity Battery Pack, Multi-Voltage Charger



M18™ 3-1/4" Planer Kit

2623-21 (2623-20 Tool-Only)

Specifications:

RPM	14,000
Planing Width	3-1/4"
Max Planing Depth	5/64"
Rabbit Depth	27/64"
Length	12-2/5"
Weight	7.8 lbs

Includes: (1) M18™ REDLITHIUM™ XC Extended Capacity Battery Pack, Bevel Edge Guide, (2) Double Edged Carbide Blades, Multi-Voltage Charger, Contractor Bag



M18 FUEL
6-1/2" Circular Saw Kit

2730-22, 2730-21 (2730-20 Tool-Only)

Specifications:

RPM	5,000
Bevel Capacity	50°
Cut Capacity	2-3/16" at 90°; 1-5/8" at 45°
Arbor	5/8"
Blade Guards	Magnesium
Weight	8.0 lbs

Includes: 2730-22 (2) M18™ REDLITHIUM™ XC5.0 Extended Capacity Battery Packs, Circular Saw Blade, Wrench, Multi-Voltage Charger, Contractor Bag; 2730-21 Includes (1) M18™ REDLITHIUM™ XC5.0 Extended Capacity Battery Pack



M18™ 6-1/2" Circular Saw Kit

2630-22 (2630-20 Tool-Only)

Specifications:

RPM	3,500
Bevel Capacity	50°
Cut Capacity	2-1/8" at 90°; 1-9/16" at 45°
Arbor	5/8"
Blade Guards	Magnesium
Weight	8.5 lbs

Includes: (2) M18™ REDLITHIUM™ XC Extended Capacity Battery Packs, Circular Saw Blade, Rip Fence, Wrench, Multi-Voltage Charger, Contractor Bag



M18™ Jig Saw Kit

2645-22 (2645-20 Tool-Only)

Specifications:

SPM	0 – 2,700
Stroke Length	1"
Bevel Capacity	45° (Positive Locks at 0°, 15°, 30° and 45°)
Blade Clamp	QUIK-LOK™ T-Shank
Orbital Settings	5
Weight	7.7 lbs

Includes: (2) M18™ REDLITHIUM™ XC Extended Capacity Battery Packs, Jig Saw Blade, Non-Marring Shoe, Multi-Voltage Charger, Carrying Case



M18™ Multi-Tool Kit

2626-22 (2626-20 Tool-Only)

Specifications:

Speed Settings	12
OPM	11,000 – 18,000
Universal Adapter	Yes
Tool Free Accessory Change	Yes
Length	14"
Weight	4.2 lbs

Includes: (2) M18™ REDLITHIUM™ XC Extended Capacity Battery Packs, Wood Cutting Blade, Sanding Pad, (5) Assorted Sanding Sheets, Multi-Voltage Charger, Contractor Bag



M18™ Band Saw Kit

2629-22 (2629-20 Tool-Only)

Specifications:

SFPM	480
Cut Capacity	3-1/4" x 3-1/4"
Shoe	Tool Free
LED Light	Yes
Weight	10.2 lbs

Includes: (2) M18™ REDLITHIUM™ XC Extended Capacity Battery Packs, Blade, Multi-Voltage Charger, Carrying Case



M18 FUEL

10" Dual Bevel Sliding Compound Miter Saw Kit

2734-21HD (2734-20 Tool-Only)

Specifications:

Blade Size	10"
No Load RPM	4,000
Max Bevel Angle	48° / 48°
Max Miter Angle	50° / 60°
Max Vertical Capacity	5-3/4"
Max Horizontal Capacity	2x12
Weight	47.0 lbs

Includes: (1) M18™ REDLITHIUM™ HIGH DEMAND™ 9.0 Battery Pack, Blade Wrench, Carbide Tipped Blade, Clamp, Dust Bag, Rapid Charger



M18™ Cut Out Tool Kit

2627-22, 2627-22CT (2627-20 Tool-Only)

Specifications:

RPM	28,000
Tool Free Adjustment	Yes
LED Light	Yes
Belt Clip	Yes
Length	8-9/10"
Weight	1.9 lbs

Includes: 2627-22 (2) M18™ REDLITHIUM™ Extended Capacity XC Battery Packs, Belt Clip, (2) 1/8" Drywall Bits, 1/8" Collet, 1/4" Collet, Wrench, Multi-Voltage Charger, Contractor Bag; 2627-22CT Includes (2) M18™ REDLITHIUM™ Compact Battery Packs



M18 FUEL

16 Gauge Angled Finish Nailer Kit

2742-21CT (2742-20 Tool-Only)

Specifications:

Nail Diameter	16 gauge
Nail Size	1-1/4" – 2-1/2"
Nail Collation Angle	20°
Magazine Size	110 Nails
Max Fire Rate	3 Nails per Second
Magazine Loading	Bottom Load
Length	11-9/10"
Weight	7.2 lbs

Includes: (1) M18™ REDLITHIUM™ 2.0 Compact Battery Pack, Multi-Voltage Charger, Contractor Bag



M18 FUEL

Metal Cutting Circular Saw Kit

2782-22 (2782-20 Tool-Only)

Specifications:

RPM	3,900
Blade Size	5-3/8" – 5-7/8"
Arbor Size	20 mm
Hang Hook	Yes
Length	4-7/10"
Weight	6.5 lbs

Includes: (2) M18™ REDLITHIUM™ XC5.0 Extended Capacity Battery Packs, 30T Blade, Multi-Voltage Charger, Contractor Bag



M18 FUEL

18 Gauge Brad Nailer Kit

2740-21CT (2740-20 Tool-Only)

Specifications:

Nail Diameter	18 gauge
Nail Size	5/8" – 2-1/8"
Nail Collation Angle	0°
Magazine Size	110 Nails
Max Fire Rate	3 Nails per Second
Magazine Loading	Side Load
Length	11-2/5"
Weight	6.1 lbs

Includes: (1) M18™ REDLITHIUM™ 2.0 Compact Battery Pack, Multi-Voltage Charger, Contractor Bag



M18 FUEL

15 Gauge Finish Nailer Kit

2743-21CT (2743-20 Tool-Only)

Specifications:

Nail Diameter	15 gauge
Nail Size	1-1/4" – 2-1/2"
Nail Collation Angle	34°
Magazine Size	110 Nails
Max Fire Rate	3 Nails per Second
Magazine Loading	Bottom Load
Length	11-9/10"
Weight	7.2 lbs

Includes: (1) M18™ REDLITHIUM™ 2.0 Compact Battery Pack, Multi-Voltage Charger, Contractor Bag



M18 FUEL

Deep Cut Band Saw Kit

2729-22HD, 2729-22, 2729-21 (2729-20 Tool-Only)

Specifications:

SFPM	0 – 380
Cut Capacity	5" x 5"
Shoe	Tool Free
LED Light	Yes
Hang Hook	Yes
Weight	15.9 lbs

Includes: 2729-22HD (2) M18™ REDLITHIUM™ HIGH DEMAND™ 9.0 Battery Packs, Blade, Rapid Charger, Carrying Case; 2729-22 Includes (2) M18™ REDLITHIUM™ XC5.0 Extended Capacity Battery Packs, Multi-Voltage Charger; 2729-21 Includes (1) M18™ REDLITHIUM™ XC5.0 Extended Capacity Battery Pack, Multi-Voltage Charger



M18 FUEL

16 Gauge Straight Finish Nailer Kit

2741-21CT (2741-20 Tool-Only)

Specifications:

Nail Diameter	16 gauge
Nail Size	3/4" – 2-1/2"
Nail Collation Angle	0°
Magazine Size	110 Nails
Max Fire Rate	3 Nails per Second
Magazine Loading	Bottom Load
Length	11-9/10"
Weight	7.2 lbs

Includes: (1) M18™ REDLITHIUM™ 2.0 Compact Battery Pack, Multi-Voltage Charger, Contractor Bag



M18 FUEL
7" Variable Speed Polisher Kit

2738-22, 2738-22P (2738-20 Tool-Only)

Specifications:

Capacity	7" Maximum
RPM	0 – 2,200
Variable Speed Dial and Trigger	Yes
Lock-On / Lock-Off	Yes
Length	19-4/5"
Weight	6.4 lbs



Includes: 2738-22 (2) M18™ REDLITHIUM™ XC5.0 Battery Packs, Backing Pad, Screen Cover, Side Handle, Bail Handle with (2) Bolts, Rapid Charger; 2738-22P Includes 7" Wool Cutting Pad, 7" Yellow Foam Polishing Pad, 7" Black Foam Finishing Pad



M18 FUEL
4-1/2" / 5" Grinder Paddle Switch, No-Lock Kit

2780-22HD, 2780-22, 2780-21 (2780-20 Tool-Only)

Specifications:

RPM	8,500
Switch Type	Paddle No-Lock
Power to Grind	Yes
Overload Protection	Yes
Electronic Clutch	Yes
Tool Free Accessory Change and Guard	Yes
Length	15"
Weight	8.2 lbs



Includes: 2780-22HD (2) M18™ REDLITHIUM™ HIGH DEMAND™ 9.0 Battery Packs, Rapid Charger, Carrying Case; 2780-22 Includes (2) M18™ REDLITHIUM™ XC5.0 Extended Capacity Battery Packs, Multi-Voltage Charger; 2780-21 Includes (1) M18™ REDLITHIUM™ XC5.0 Extended Capacity Battery Pack, Multi-Voltage Charger



M18 FUEL
4-1/2" / 5" Grinder Slide Switch, Lock-On Kit

2781-22HD, 2781-22, 2781-21 (2781-20 Tool-Only)

Specifications:

RPM	8,500
Switch Type	Slide with Lock-On
Power to Grind	Yes
Overload Protection	Yes
Electronic Clutch	Yes
Tool Free Accessory Change and Guard	Yes
Length	15"
Weight	8.2 lbs



Includes: 2781-22HD (2) M18™ REDLITHIUM™ HIGH DEMAND™ 9.0 Battery Packs, Rapid Charger, Carrying Case; 2781-22 Includes (2) M18™ REDLITHIUM™ XC5.0 Extended Capacity Battery Packs, Multi-Voltage Charger; 2781-21 Includes (1) M18™ REDLITHIUM™ XC5.0 Extended Capacity Battery Pack, Multi-Voltage Charger



M18 FUEL
4-1/2" / 5" Braking Grinder Kit

2783-22HD, 2783-22 (2783-20 Tool-Only)

Specifications:

RPM	8,500
Switch Type	Paddle No-Lock
Brake	Yes
Clutch	Yes
Overload Protection	Yes
Tool Free Accessory Change and Guard	FIXTEC™ Nut and Tool Free Guard
Length	15-1/4"
Weight	8.2 lbs



Includes: 2783-22HD (2) M18™ REDLITHIUM™ HIGH DEMAND™ 9.0 Battery Packs, FIXTEC™ Nut, Flange Nut, T1 Guard, T27 Guard, Rapid Charger, Carrying Case; 2783-22 Includes (2) M18™ REDLITHIUM™ XC5.0 Extended Capacity Battery Packs, Multi-Voltage Charger

M18 FUEL
1/4" Die Grinder Kit

2784-22 (2784-20 Tool-Only)

Specifications:

Collet Size	1/4"
RPM	20,000
Switch Type	Slide, Lock-On
Length	18"
Weight	4.6 lbs



Includes: (2) M18™ REDLITHIUM™ XC5.0 Extended Capacity Battery Packs, 11/16" Wrench, 1/2" Wrench, Multi-Voltage Charger, Carrying Case



M18™ 18 Gauge Double Cut Shear Kit

2635-22 (2635-20 Tool-Only)

Specifications:

Head	18 Gauge Double Cut
360° Tool Free Rotating Head	Yes
Variable Speed Trigger	Yes
Length	17-1/4"
Weight	5.6 lbs



Includes: (2) M18™ REDLITHIUM™ XC Extended Capacity Battery Packs, Hex Key, Belt Clip, Multi-Voltage Charger, Contractor Bag



M18™ 4-1/2" Cut-Off / Grinder Kit

2680-22 (2680-20 Tool-Only)

Specifications:

RPM	9,000
Switch	Paddle
Guard Adjustment	Tool Free
Overload Protection	Yes
Weight	5.9 lbs



Includes: (2) M18™ REDLITHIUM™ XC Extended Capacity Battery Packs, Type 1 Guard, Type 27 Guard, Spanner Wrench, Side Handle, Multi-Voltage Charger, Contractor Bag

M18™ 14 Gauge Double Cut Shear Kit

2636-22 (2636-20 Tool-Only)

Specifications:

Head	14 Gauge Double Cut
360° Tool Free Rotating Head	Yes
Variable Speed Trigger	Yes
Length	17-1/4"
Weight	6.2 lbs



Includes: (2) M18™ REDLITHIUM™ XC Extended Capacity Battery Packs, Hex Key, Belt Clip, Multi-Voltage Charger, Contractor Bag



M18™ 18 Gauge Single Cut Shear Kit

2637-22 (2637-20 Tool-Only)

Specifications:

Head	18 Gauge Single Cut
360° Tool Free Rotating Head	Yes
Variable Speed Trigger	Yes
Length	18"
Weight	5.8 lbs



Includes: (2) M18™ REDLITHIUM™ XC Extended Capacity Battery Packs, Hex Key, Belt Clip, Multi-Voltage Charger, Contractor Bag

M18™ FORCE LOGIC™ 6T Crimper Kit w/ D3 Grooves and Fixed BG Die

2678-22BG

Specifications:

Balanced Center Grip	Yes
Adaptive Pressure Control System	Yes; PFM™
Reporting and Tool Diagnostics	Built-In; ONE-KEY™ Compatible
Crimp Speed	2.9 Seconds
Head Rotation	350°
Length	14"



Includes: (2) M18™ REDLITHIUM™ 2.0 Compact Battery Packs, 6T Crimping Jaw with Fixed BG Die, Carabiner, AC/DC Wall and Vehicle Charger, Bucket Bag



M18™ FORCE LOGIC™ 6T Crimper Kit w/ D3 Grooves and Fixed O Die

2678-22O

Specifications:

Balanced Center Grip	Yes
Adaptive Pressure Control System	Yes; PFM™
Reporting and Tool Diagnostics	Built-In; ONE-KEY™ Compatible
Crimp Speed	2.9 Seconds
Head Rotation	350°
Length	14"



Includes: (2) M18™ REDLITHIUM™ 2.0 Compact Battery Packs, 6T Crimping Jaw with Fixed O Die, Carabiner, AC/DC Wall and Vehicle Charger, Bucket Bag

M18™ FORCE LOGIC™ 6T Crimper Kit w/ D3 Grooves and Snub Nose

2678-22

Specifications:

Balanced Center Grip	Yes
Adaptive Pressure Control System	Yes; PFM™
Reporting and Tool Diagnostics	Built-In; ONE-KEY™ Compatible
Crimp Speed	2.9 Seconds
Head Rotation	350°
Length	14"



Includes: (2) M18™ REDLITHIUM™ 2.0 Compact Battery Packs, 6T Snub Nose Crimping Jaw, Carabiner, AC/DC Wall and Vehicle Charger, Bucket Bag

M18™ FORCE LOGIC™ 6T Crimper Kit w/ Kearney Grooves

2678-22K

Specifications:

Balanced Center Grip	Yes
Adaptive Pressure Control System	Yes; PFM™
Reporting and Tool Diagnostics	Built-In; ONE-KEY™ Compatible
Crimp Speed	2.9 Seconds
Head Rotation	350°
Length	14"



Includes: (2) M18™ REDLITHIUM™ 2.0 Compact Battery Packs, 6T Kearney Crimping Jaw, Carabiner, AC/DC Wall and Vehicle Charger, Bucket Bag

M18™ FORCE LOGIC™ 6T Crimper Accessories

Compatible with 2678-22BG, 2678-22O, 2678-22, 2678-22K

6T Utility Crimper Jaws

- 49-16-BGD3 6T Fixed BG Crimping Jaw;
- 49-16-0OD3 6T Fixed O Crimping Jaw;
- 49-16-00D3 6T Snub Nose Crimping Jaw;
- 49-16-KEAR 6T Kearney Crimping Jaw

W Style Dies

- 49-16-WBG0 W Style Die: "W-BG";
- 49-16-WO00 W Style Die: "W-O";
- 49-16-WC00 W Style Die: "W-C";
- 49-16-W840 W Style Die: "W-K840";
- 49-16-W161 W Style Die: "W-161";
- 49-16-W162 W Style Die: "W-162";
- 49-16-W163 W Style Die: "W-163";
- 49-16-W165 W Style Die: "W-165";
- 49-16-W166 W Style Die: "W-166";
- 49-16-W243 W Style Die: "W-243";
- 49-16-W247 W Style Die: "W-247";
- 49-16-W249 W Style Die: "W-249";
- 49-16-W164 W Style Die: "W-164";
- 49-16-W237 W Style Die: "W-237";
- 49-16-W239 W Style Die: "W-239"



M18™ FORCE LOGIC™ 600 MCM Crimper Kit

2679-22

Specifications:

UL Classification	Yes (All 7 Manufacturers)
Balanced Center Grip	Yes
Adaptive Pressure Control System	Yes; PFM™
Reporting and Tool Diagnostics	Built-In; ONE-KEY™ Compatible
Crimp Speed	2.9 Seconds
Head Rotation	350°
Length	14"



Includes: (2) M18™ REDLITHIUM™ 2.0 Compact Battery Packs, 600 MCM Commercial U Crimping Jaw, Multi-Voltage Charger, Carrying Case

Related Accessories:

49-16-U000 600 MCM Crimping Jaw

Accessory Kits

- 49-16-KITA #8 AWG – 350 MCM Aluminum U Style Die Kit;
- 49-16-KITC #8 AWG – 600 MCM Copper U Style Die Kit

Copper U Style Dies

- 49-16-U008C #8 Copper 12T U Style Die;
- 49-16-U006C #6 Copper 12T U Style Die;
- 49-16-U004C #4 Copper 12T U Style Die;
- 49-16-U002C #2 Copper 12T U Style Die;
- 49-16-U001C #1 Copper 12T U Style Die;
- 49-16-U01AC 1/0 Copper 12T U Style Die;
- 49-16-U02AC 2/0 Copper 12T U Style Die;
- 49-16-U03AC 3/0 Copper 12T U Style Die;
- 49-16-U04AC 4/0 Copper 12T U Style Die;
- 49-16-U250C 250 MCM Copper 12T U Style Die;
- 49-16-U300C 300 MCM Copper 12T U Style Die;
- 49-16-U350C 350 MCM Copper 12T U Style Die;
- 49-16-U400C 400 MCM Copper 12T U Style Die;
- 49-16-U500C 500 MCM Copper 12T U Style Die;
- 49-16-U600C 600 MCM Copper 12T U Style Die

Aluminum Dual Rated U Style Dies

- 49-16-U008 #8 Aluminum 12T U Style Die;
- 49-16-U006 #6 Aluminum 12T U Style Die;
- 49-16-U004 #4 Aluminum 12T U Style Die;
- 49-16-U002 #2 Aluminum 12T U Style Die;
- 49-16-U001 #1 Aluminum 12T U Style Die;
- 49-16-U01A 1/0 Aluminum 12T U Style Die;
- 49-16-U02A 2/0 Aluminum 12T U Style Die;
- 49-16-U03A 3/0 Aluminum 12T U Style Die;
- 49-16-U04A 4/0 Aluminum 12T U Style Die;
- 49-16-U250 250 MCM Aluminum 12T U Style Die;
- 49-16-U300 300 MCM Aluminum 12T U Style Die;
- 49-16-U350 350 MCM Aluminum 12T U Style Die;
- 49-16-U400 400 MCM Aluminum 12T U Style Die;
- 49-16-U500 500 MCM Aluminum 12T U Style Die;
- 49-16-U600 600 MCM Aluminum 12T U Style Die

M18™ FORCE LOGIC™ 12T Utility Crimper Kit

2778-22

Specifications:

Output Force	12 Tons
Head Rotation	350°
Reporting and Tool Diagnostics	Built-In; ONE-KEY™ Compatible
Length	16"
Weight	11.9 lbs



Includes: (1) M18™ REDLITHIUM™ XC5.0 Extended Capacity Battery Pack, (1) M18™ REDLITHIUM™ 2.0 Compact Battery Pack, AC/DC Wall and Vehicle Charger, Carabiner, Utility Bag

M18™ FORCE LOGIC™ 750 MCM Crimper Kit

2779-22

Specifications:

Output Force	12 Tons
Head Rotation	350°
Reporting and Tool Diagnostics	Built-In; ONE-KEY™ Compatible
Length	16"
Weight	11.5 lbs



Includes: (1) M18™ REDLITHIUM™ XC5.0 Extended Capacity Battery Pack, (1) M18™ REDLITHIUM™ 2.0 Compact Battery Pack, Multi-Voltage Charger, Carrying Case

Related Accessories:

Accessory Kits

- 49-12-KITC EXACT™ #6 AWG – 750 MCM Cu 12T U Style Die Kit;
- 49-12-KITA EXACT™ #6 AWG – 750 MCM Al 12T U Style Die Kit

EXACT™ 12T Copper U Style Dies

- 49-12-U008C #8 Copper 12T U Style Die;
- 49-12-U006C #6 Copper 12T U Style Die;
- 49-12-U004C #4 Copper 12T U Style Die;
- 49-12-U002C #2 Copper 12T U Style Die;
- 49-12-U001C #1 Copper 12T U Style Die;
- 49-12-U01AC 1/0 Copper 12T U Style Die;
- 49-12-U02AC 2/0 Copper 12T U Style Die;
- 49-12-U03AC 3/0 Copper 12T U Style Die;
- 49-12-U04AC 4/0 Copper 12T U Style Die;
- 49-12-U250C 250 MCM Copper 12T U Style Die;
- 49-12-U300C 300 MCM Copper 12T U Style Die;
- 49-12-U350C 350 MCM Copper 12T U Style Die;
- 49-12-U400C 400 MCM Copper 12T U Style Die;
- 49-12-U500C 500 MCM Copper 12T U Style Die;
- 49-12-U600C 600 MCM Copper 12T U Style Die;
- 49-12-U750C 750 MCM Copper 12T U Style Die

EXACT™ 12T Aluminum U Style Dies

- 49-12-U008 #8 Aluminum 12T U Style Die;
- 49-12-U006 #6 Aluminum 12T U Style Die;
- 49-12-U004 #4 Aluminum 12T U Style Die;
- 49-12-U002 #2 Aluminum 12T U Style Die;
- 49-12-U001 #1 Aluminum 12T U Style Die;
- 49-12-U01A 1/0 Aluminum 12T U Style Die;
- 49-12-U02A 2/0 Aluminum 12T U Style Die;
- 49-12-U03A 3/0 Aluminum 12T U Style Die;
- 49-12-U04A 4/0 Aluminum 12T U Style Die;
- 49-12-U250 250 MCM Aluminum 12T U Style Die;
- 49-12-U300 300 MCM Aluminum 12T U Style Die;
- 49-12-U350 350 MCM Aluminum 12T U Style Die;
- 49-12-U400 400 MCM Aluminum 12T U Style Die;
- 49-12-U500 500 MCM Aluminum 12T U Style Die;
- 49-12-U600 600 MCM Aluminum 12T U Style Die;
- 49-12-U750 750 MCM Aluminum 12T U Style Die



M18™ FORCE LOGIC™ Cable Cutter Kit w/ 750 MCM Cu Jaws

2672-21

Specifications:

Capacity	750 MCM Cu, 1,000 MCM Al
Average Cut Speed	3 Seconds
Head Rotation	350°
Auto Reset	Yes
Length	14"

Includes: (1) M18™ REDLITHIUM™ 2.0 Compact Battery Pack, 750 MCM Cable Cutter Jaw, Allen Wrench, Multi-Voltage Charger, Carrying Case



M18™ FORCE LOGIC™ 3" Underground Cable Cutter Kit w/ Wireless Remote

2776R-21

Specifications:

Hydraulic Output Force	9 Tons
Cut Capacity	1500 MCM Cu 15KV
Tool Diagnostics	Built-In; ONE-KEY™ Compatible
Length	20-4/5"
Weight	15.75 lbs

Includes: (1) M18™ REDLITHIUM™ XC5.0 Extended Capacity Battery Pack, Remote, Carabiner, M18™ AC/DC Wall and Vehicle Charger, Utility Bag

Related Accessories:

49-16-2774 3" Underground Replacement Blades



M18™ FORCE LOGIC™ Cable Cutter Kit w/ 477 ACSR Jaws

2672-21S

Specifications:

Capacity	477 HEN ACSR
Average Cut Speed	3 Seconds
Head Rotation	350°
Auto Reset	Yes
Length	14"

Includes: (1) M18™ REDLITHIUM™ 2.0 Compact Battery Pack, 477 ACSR Cutting Jaw, Carabiner, Allen Wrench, AC/DC Wall and Vehicle Charger, Bucket Bag



M18™ FORCE LOGIC™ 3" Underground Cable Cutter Kit

2776-21

Specifications:

Hydraulic Output Force	9 Tons
Cut Capacity	1500 MCM Cu 15KV
Tool Diagnostics	Built-In; ONE-KEY™ Compatible
Length	20-4/5"
Weight	15.75 lbs

Includes: (1) M18™ REDLITHIUM™ XC5.0 Extended Capacity Battery Pack, Carabiner, M18™ AC/DC Wall and Vehicle Charger, Utility Bag

Related Accessories:

49-16-2774 3" Underground Replacement Blades



M18™ FORCE LOGIC™ Cable Cutter Accessories

Compatible with 2672-21 and 2672-21S

Cutter Jaws

49-16-2772 M18™ Cu/Al Cutting Jaw;
49-16-2773 M18™ ACSR Cutting Jaw

Cutter Replacement Blades

48-44-0411 Replacement Copper Blades;
48-44-0412 Replacement Steel Blades

M18™ FORCE LOGIC™ 1590 ACSR Cutter Kit

2777-21

Specifications:

Hydraulic Output Force	9 Tons
Cut Capacity	Up to 1590 Falcon ACSR
Tool Diagnostics	Built-In; ONE-KEY™ Compatible
Length	16-3/4"
Weight	11.75 lbs

Includes: (1) M18™ REDLITHIUM™ XC5.0 Extended Capacity Battery Pack, Carabiner, Side Handle, AC/DC Wall and Vehicle Charger, Utility Bag

Related Accessories:

49-16-2775 1590 ACSR Replacement Blades



M18™ FORCE LOGIC™ 6 Ton Knockout Tool Kit

2677-21 (2677-20 No Punches or Dies)

Specifications:

Mild Steel Capacity	4" in 14 Gauge
Stainless Steel Capacity	2" in 14 Gauge
Output Force	6 Ton
Quick-Connect Draw Stud	Yes
Weight	4.3 lbs
Height	4-1/2"

Includes: 2677-21 (1) M18™ REDLITHIUM™ 2.0 Compact Battery Pack, EXACT™ 1/2" – 2" Conduit Punches and Dies, (2) Draw Studs, Quick Connect Alignment System, Multi-Voltage Charger, Carrying Case; 2677-20 Includes No Punches or Dies



M18™ FORCE LOGIC™ 10 Ton Knockout Tool Kit

2676-23, 2676-22 (2676-20 No Punches or Dies)

Specifications:

Mild Steel Capacity	6" in 12 Gauge
Stainless Steel Capacity	6" in 14 Gauge
Output Force	10 Ton
Quick-Connect Draw Stud	Yes
Weight	7.1 lbs
Height	5-1/2"

Includes: 2676-23 (2) M18™ REDLITHIUM™ XC Extended Capacity Battery Packs, EXACT™ 1/2" – 4" Conduit Punches and Dies, (3) Draw Studs, Quick Connect Alignment System, Multi-Voltage Charger, Carrying Case; 2676-22 Includes 1/2" – 2" EXACT™ Conduit Punches and Dies; 2676-20 Includes No Punches or Dies



M18™ FORCE LOGIC™ Knockout Accessories

Compatible with 2677-20 and 2676-20

EXACT™ Accessory Kits

49-16-2692 1/2" – 1-1/4" Knockout Set;
49-16-2693 1/2" – 2" Knockout Set;
49-16-2694 1/2" – 2" Hand Ratchet Knockout Set;
49-16-2695 2-1/2" – 4" Knockout Set

EXACT™ Punches and Dies

49-16-2660* 1/2" Die;
49-16-2660S 1/2" Die;
49-16-2661* 1/2" Punch;
49-16-2661S 1/2" Punch;
49-16-2662 3/4" Die;
49-16-2663 3/4" Punch;
49-16-2664 1" Die;
49-16-2665 1" Punch;
49-16-2666 1-1/4" Die;
49-16-2667 1-1/4" Punch;
49-16-2668 1-1/2" Die;
49-16-2669 1-1/2" Punch;
49-16-2670 2" Die;
49-16-2671 2" Punch;
49-16-2672 2-1/2" Die;
49-16-2673 2-1/2" Punch;
49-16-2674 3" Die;
49-16-2675 3" Punch;
49-16-2676 3-1/2" Die;
49-16-2677 3-1/2" Punch;
49-16-2678 4" Die;
49-16-2679 4" Punch;
49-16-2686 5" Die;
49-16-2687 5" Punch;
49-16-2688 6" Die;
49-16-2689 6" Punch

*These items are intended only for Mild Steel.

EXACT™ Sink Punches & Dies

49-16-2705 7/8" Sink Die;
49-16-2706 7/8" Sink Punch;
49-16-2700 1-3/8" Sink Die;
49-16-2701 1-3/8" Sink Punch

Draw Studs

49-16-2621 3/8" Ball Bearing Draw Stud;
49-16-2622 3/4" Ball Bearing Draw Stud;
49-16-2680 7/16" Draw Stud;
49-16-2681 3/4" Draw Stud;
49-16-2682 1-1/8" Draw Stud;
49-16-2707 1-1/8" Long Draw Stud

Adapters

49-16-2684 3/8" Adapter for EXACT™ 2-1/2" – 4" Dies to 3/4" Draw Studs;
49-16-2685 Adapter for M18™ FORCE LOGIC™ Knockout Tool to other major brands of punches and dies

M18™ FORCE LOGIC™ Press Tool Kit

2773-22 (2773-20 No Jaw Kit)

Specifications:

Capacity	1/2" – 4" (Varies by Material)
Weight	6.5 lbs
Length	14-1/10"
Calibration Interval	50,000 Cycles (LED Indicator)
Approximate Cycle Time	3.7 Seconds
Press Force	7,200 lbs

Includes: (2) M18™ REDLITHIUM™ 2.0 Compact Battery Packs, (6) Jaws (1/2", 3/4", 1", 1-1/4", 1-1/2", 2"), Multi-Voltage Charger, Carrying Case; 2773-20 Includes No Jaws



M18™ FORCE LOGIC™ Long Throw Press Tool Kit

2673-22L (2673-20L No Jaw Kit)

Specifications:

Capacity	1/2" – 4" CU, 1/2" – 2" SS
Weight	10.1 lbs
Length	20-1/8"
Calibration Interval	40,000 Cycles (LED Indicator)
Approximate Cycle Time	5 Seconds, 10 Seconds at Full Stroke
Press Force	7,200 lbs

Includes: 2673-22L (2) M18™ REDLITHIUM™ XC Extended Capacity Battery Packs, (3) Jaws (1/2", 3/4", 1"), Multi-Voltage Charger, Carrying Case; 2673-20L Includes No Jaws



M18™ FORCE LOGIC™ Press Tool Accessories

Compatible with 2773-20 and 2673-20L

Accessory Kits

49-16-2696 M18™ 1/2" – 1" Black Iron Press Kit;
49-16-2690 M18™ Press Ring 2-1/2" – 4" Kit;
49-16-2691* M18™ SS Press Ring 1-1/2" – 2" Kit;
49-16-2697 M18™ 1/2" – 2" Black Iron Press Kit
*Compatible with 2673-20L only.

Standard Jaws & Rings

49-16-2650 1/2" Jaw;
49-16-2651 3/4" Jaw;
49-16-2652 1-1/4" Jaw;
49-16-2653 1-1/2" Jaw;
49-16-2654 2" Jaw;
49-16-2655 2-1/2" Ring;
49-16-2656 3" Ring;
49-16-2657 4" Ring;
49-16-2658 Ring Jaw 1;
49-16-2659 Ring Jaw

Stainless Steel Jaws & Rings

49-16-2650S 1/2" SS Jaw;
49-16-2651S 3/4" SS Jaw;
49-16-2652S 1" SS Jaw;
49-16-2654S* 1-1/2" SS Ring;
49-16-2655S* 2" SS Ring;
49-16-2659S* SS Ring Jaw 2
*Compatible with 2673-20L only.

Black Iron Jaws & Rings

49-16-2650B 1/2" Jaw;
49-16-2651B 3/4" Jaw;
49-16-2652B 1" Jaw;
49-16-2653B 1-1/4" Ring;
49-16-2654B 1-1/2" Ring;
49-16-2655B 2" Ring



M18™ Short Throw Press Tool w/ PEX Crimp Jaws

2674-22C

Specifications:

Capacity	Up to 1"
Cycle Time	3 Seconds
Auto Cycle	Yes
Length	13-1/2"
Weight	4.8 lbs



Includes: (2) M18™ REDLITHIUM™ 2.0 Compact Battery Packs, (3) PEX Crimp Jaws (1/2", 3/4", 1"), Multi-Voltage Charger and Carrying Case

M18™ Short Throw Press Tool w/ Viega PUREFLOW™ Jaws

2674-22P

Specifications:

Capacity	Up to 1"
Cycle Time	3 Seconds
Auto Cycle	Yes
Length	13-1/2"
Weight	4.8 lbs



Includes: (2) M18™ REDLITHIUM™ 2.0 Compact Battery Packs, (3) Viega PUREFLOW™ Jaws (1/2", 3/4", 1"), Multi-Voltage Charger, Carrying Case

M18™ Short Throw Press Tool Accessories

Compatible with 2674-22C and 2674-22P

- 49-16-2630C** 3/8" PEX Crimp Jaw;
- 49-16-2631C** 1/2" PEX Crimp Jaw;
- 49-16-2632C** 5/8" PEX Crimp Jaw;
- 49-16-2633C** 3/4" PEX Crimp Jaw;
- 49-16-2634C** 1" PEX Crimp Jaw;
- 49-16-2630P** 3/8" Viega PUREFLOW™ Jaw;
- 49-16-2631P** 1/2" Viega PUREFLOW™ Jaw;
- 49-16-2632P** 5/8" Viega PUREFLOW™ Jaw;
- 49-16-2633P** 3/4" Viega PUREFLOW™ Jaw;
- 49-16-2634P** 1" Viega PUREFLOW™ Jaw

M18™ FORCE LOGIC™ 2" - 3" ProPEX® Expansion Tool Kit

2633-22

Specifications:

Capacity	2", 2-1/2", and 3"
Auto-Rotation	Built-In
Auto-Cycle	Built-In
Dimensions (L x W x H)	14-1/2" x 11-4/5" x 4-3/4"
Weight	13.1 lbs



Includes: (2) M18™ REDLITHIUM™ XC4.0 Extended Capacity Battery Packs, (3) ProPEX® Expansion Heads (1/2", 2-1/2", 3"), Side Handle, Grease, Multi-Voltage Charger, Carrying Case

Related Accessories:

- 49-16-2614** 2" ProPEX® Expansion Head;
- 49-16-2616** 2-1/2" ProPEX® Expansion Head;
- 49-16-2618** 3" ProPEX® Expansion Head

M18™ ProPEX® Expansion Tool Kit

2632-22XC (2632-20 Tool-Only)

Specifications:

Capacity	3/8" - 1-1/2"
Auto-Rotation	Built-In
Dimensions (L x W x H)	8-7/10" x 4-2/5" x 10-4/5"
Weight	9.2 lbs



Includes: (2) M18™ REDLITHIUM™ XC Extended Capacity Battery Packs, (3) ProPEX Expansion Heads (1", 1-1/4", 1-1/2"), Grease, Multi-Voltage Charger, Carrying Case

Related Accessories:

- 49-16-2608** 1" ProPEX® Expansion Head;
- 49-16-2610** 1-1/4" ProPEX® Expansion Head;
- 49-16-2612** 1-1/2" ProPEX® Expansion Head

M18™ Transfer Pump Kit

2771-21 (2771-20 Tool-Only)

Specifications:

Gallons Per Hour	480
Gallons Per Battery (XC)	144
Maximum Lift	18'
Maximum Head Height	75'
Self Priming	Yes
Flexible Impeller	Yes
Fittings	3/4" Brass Inlet and Outlet



Includes: (1) M18™ REDLITHIUM™ XC Battery, (2) 3/4" Brass Fittings, Multi-Voltage Charger

M18™ 2-Speed Grease Gun Kit

2646-22CT, 2646-21CT (2646-20 Tool-Only)

Specifications:

Output Pressure	Up to 10,000 PSI (690 BAR)
Run-Time	Up to 10 Cartridges Per Charge
Grease Capacity	14 oz Cartridge, 16 oz Bulk, 16 oz Suction
Air Bleeder Valve	Yes
Weight	8.5 lbs



Includes: 2646-22CT (2) M18™ REDLITHIUM™ Compact Battery Packs, 48" Flex Hose with Spring Guard, High Pressure Grease Coupler, Shoulder Strap, Multi-Voltage Charger, Carrying Case; 2646-21CT Includes (1) M18™ REDLITHIUM™ Compact Battery Pack

Related Accessories:

- 49-16-2646** M18™ Grease Gun 400g Clear Barrel;
- 49-16-2647** M18™ Replacement Grease Gun Hose with High Pressure Coupler;
- 49-16-2648** M18™ Right Angle Grease Gun Coupler;
- 49-16-2649** M18™ High Pressure Grease Coupler 2-Pack



M18™ 10 oz Caulk and Adhesive Gun Kit

2641-21CT (2641-20 Tool-Only)

Specifications:

Force	950 lbs
Inches Per Minute	0 - 21
Speed Settings	6
Auto-Reverse Anti-Drip	Yes
Weight	5.8 lbs



Includes: (1) M18™ REDLITHIUM™ Compact Battery Pack, 10 oz Carriage, M18™ 10 oz Plunger Rod and Piston Assembly, Multi-Voltage Charger

M18™ 20 oz Aluminum Barrel Sausage Style Caulk and Adhesive Gun Kit

2642-21CT

Specifications:

Force	950 lbs
Inches Per Minute	0 - 21
Speed Settings	6
Auto-Reverse Anti-Drip	Yes
Weight	6.5 lbs



Includes: (1) M18™ REDLITHIUM™ Compact Battery Pack, 20 oz Aluminum Sausage Style Barrel, M18™ 20 oz Plunger Rod and Piston Assembly, Nozzle, Multi-Voltage Charger

M18™ 20 oz Clear Barrel Sausage Style Caulk and Adhesive Gun Kit

2643-21CT

Specifications:

Force	950 lbs
Inches Per Minute	0 - 21
Speed Settings	6
Auto-Reverse Anti-Drip	Yes
Weight	6.6 lbs



Includes: (1) M18™ REDLITHIUM™ Compact Battery Pack, 20 oz Clear Sausage Style Barrel, M18™ 20 oz Plunger Rod and Piston Assembly, Nozzle, Multi-Voltage Charger

M18™ Caulk Gun Accessories

Compatible with 2641-21CT, 2642-21CT, and 2643-21CT

- 48-08-1076** M18™ 10 oz Caulk and Adhesive Gun Conversion Kit;
- 48-08-1093** M18™ 20 oz Aluminum Barrel Sausage Style Caulk and Adhesive Gun Conversion Kit;
- 48-08-1094** M18™ 20 oz Clear Barrel Sausage Style Caulk and Adhesive Gun Conversion Kit;
- 48-08-1095** M18™ Quart Caulk and Adhesive Gun Conversion Kit;
- 48-08-1091** 20 oz Aluminum Barrel Kit;
- 48-08-1096** 20 oz Clear Barrel Kit;
- 31-12-0700** Caulk Gun Nozzle - Black

M18™ ROCKET™ LED Tower Light

2130-20

Specifications:

Lumens	2,000 / 1,300 / 850
Modes	High, Medium, Low
Moisture Resistance	IP54
Height	40" Collapsed, 7' Fully Extended
Weight	16.2 lbs



Battery and Charger Sold Separately



M18™ ROCKET™ Tower Light/Charger

2135-21HD (2135-20 Tool-Only)

Specifications:

Lumens	3,000 / 1,700 / 900
Modes	High, Medium, Low
Moisture Resistance	IP54
Powered By	M18™ or Corded
Head	(3) Independent Multi-Directional
Height	41-1/2" Collapsed, 7' Fully Extended
Weight	18.0 lbs



Includes: (1) M18™ REDLITHIUM™ HIGH DEMAND™ 9.0 Battery Pack, Carrying Bag

POWERED BY CHARGES



M18™ RADIUS™ LED Compact Site Light w/ ONE-KEY™

2146-20

Specifications:

Lumens	4,400 / 2,100 / 1,000 (Customizable)
Modes	High, Medium, Low
Moisture Resistance	IP54
Powered By	M18™ or Corded
Hands Free	Self-Centering Metal Hook
Daisy Chain Compatible	Yes
Weight	10.6 lbs



Battery and Charger Sold Separately

Includes: Security Cable



M18™ RADIUS™ LED Compact Site Light

2145-20

Specifications:

Lumens	4,400 / 2,100 / 1,000
Modes	High, Medium, Low
Moisture Resistance	IP54
Powered By	M18™ or Corded
Hands Free	Self-Centering Metal Hook
Daisy Chain Compatible	Yes
Weight	10.6 lbs



Battery and Charger Sold Separately

Includes: Security Cable

POWERED BY



M18™ LED Stick Light

2352-20

Specifications:

Lumens	300 / 150
Modes	High, Low
Moisture Resistance	IP54
Pivoting Head	45°
Hands Free	2 Stainless Steel Hooks
Length	11-5/8"
Weight	1.1 lbs



Battery and Charger Sold Separately



M18™ ROVER™ LED Dual Power Flood Light

2360-20

Specifications:

Lumens	3,000 / 1,500 / 650
Modes	High, Medium, Low
Powered By	M18™ or Corded
Hands Free	(3) Keyholes for Hanging
Length	9"
Weight	6.4 lbs



Battery and Charger Sold Separately

POWERED BY



M18™ Lantern/Flood Light

2363-20

Specifications:

Lumens	700 / 350 / 70 / 700
Modes	High, Medium, Low, Strobe
Beam Pattern	Adjustable 180° – 360°
Moisture Resistance	IPX4
Hands Free	2 Stainless Steel Hooks
USB Charger	2.1A USB Charging Port
Length	11-1/2"
Weight	1.2 lbs



Battery and Charger Sold Separately



M18™ ROVER™ LED Flood Light

2361-20

Specifications:

Lumens	1,500 / 780
Modes	High, Low
Moisture Resistance	IP54
Hands-Free	(1) Keyhole for Hanging, (1) EMT Hanger
Length	8-3/4"
Weight	3.4 lbs



Battery and Charger Sold Separately



M18™ LED Search Light

2354-21 (2354-20 Tool-Only)

Specifications:

Lumens	1,250 / 1,200 / 600 / 1,200
Modes	Spot/Flood, Flood, Spot, Strobe
Beam Distance	730 yd / 667.5 m
Moisture Resistance	IP54
Head Rotation	198°
Length	11-1/2"
Weight	3.1 lbs



Includes: (1) M18™ REDLITHIUM™ XC5.0 Extended Capacity Battery Pack, Multi-Voltage Charger, Shoulder Strap



M18™ LED Work Light

2735-20

Specifications:

Lumens	100
Hands Free	Integrated Hook
Head Rotation	90°



Battery and Charger Sold Separately



M18™ LED Utility Bucket Light

2122-22HD, 2122-21HD (2122-20 Tool-Only)

Specifications:

Lumens	2,500 / 2,200 / 800
Modes	Flood, Spot/Flood, Spot
Hands Free	Patented Spring Loaded Bucket Clamp
Moisture Resistance	IP56
Length	13-3/4"
Weight	10.5 lbs



Includes: 2122-22HD (2) M18™ REDLITHIUM™ HIGH DEMAND™ 9.0 Battery Packs, Rapid Charger, Storage Bag; 2122-21HD Includes (1) M18™ REDLITHIUM™ HIGH DEMAND™ 9.0 Battery Pack



M18 FUEL™ String Trimmer Kit

2725-21HD (2725-20 Tool-Only)

Specifications:

Cutting Swath	14" – 16"
Line Diameter	.080" / .095"
RPM	0 – 4,600 / 0 – 5,800
Trigger	Variable Speed
Feed System	Bump Feed
Length	73-3/5"
Weight	12.3 lbs



Includes: (1) M18™ REDLITHIUM™ HIGH DEMAND™ 9.0 Battery Pack, Rapid Charger

M18 FUEL™ Hedge Trimmer Kit

2726-21HD (2726-20 Tool-Only)

Specifications:

Blade Length	24"
Cut Capacity	3/4"
SPM	3,400
Gear Case	All-Metal
Length	45-3/4"
Weight	10.9 lbs



Includes: (1) M18™ REDLITHIUM™ HIGH DEMAND™ 9.0 Battery Pack, Rapid Charger

M18 FUEL™ Blower Kit

2728-21HD (2728-20 Tool-Only)

Specifications:

Max Air Volume	450 CFM
Max Air Speed	100 MPH
Noise Rating (db)	63 (ANSI B175)
Cruise Control	Yes
Length	38-1/2"
Weight	8.1 lbs



Includes: (1) M18™ REDLITHIUM™ HIGH DEMAND™ 9.0 Battery Pack, Rapid Charger

M18™ Compact Blower

0884-20

Specifications:

Max Air Volume	100 CFM
Max Air Speed	160 MPH
Switch	3-Speed Electronic
Length	20-1/2"
Weight	2.6 lbs



Battery and Charger Sold Separately

Includes: Flexible Nozzle, 9" Extension, Universal Inflator/Deflator

M18™ Compact Vacuum

0882-20

Specifications:

Air Volume	40 CFM
Inlet Diameter	1-1/4"
Canister Volume	36 oz
Filter	HEPA
Weight	4.3 lbs



Battery and Charger Sold Separately

Includes: 4' Hose, (2) Extension Tools, Crevice Tool, Floor Tool, Removable HEPA Filter

Related Accessory: 49-90-1951 Filter

M18™ Wet/Dry Vacuum

0880-20

Specifications:

Material	Wet/Dry
Capacity	2 gal
Air Volume	45 CFM
Suction (H ₂ O)	32"
Washable Filter	Yes; HEPA
Compatibility	All MILWAUKEE® 18V Slide-On Batteries (LITHIUM-ION or NiCd)



Battery and Charger Sold Separately

Includes: HEPA Filter, Flexible Hose, Filter Assembly, Crevice Tool, Wide Utility Nozzle

Related Accessory: 49-90-1900 Filter

M18™ Jobsite Fan

0886-20

Specifications:

Max Air Flow	284 CFMs (18 MPH)
RPM (3 Settings)	1,370 / 1,900 / 2,350
Length	10-3/10"
Weight	5.2 lbs



Battery and Charger Sold Separately

Includes: AC Adapter

M18™ Radio Charger

2792-20

Specifications:

Modes	AM, FM, AUX, Bluetooth®
Battery Charger	Charges all M18™ Batteries
Bluetooth® Antenna	100 ft Range
USB Charging Port	2.1 Amps
Powered By	All M18™ Batteries, 120V AC



Battery Sold Separately

Includes: 16" Auxiliary Input Cord, (2) AAA Batteries (For Memory Backup)

CHARGES



M18™ Jobsite Radio

2890-20

Specifications:

Modes	AM, FM, AUX
Tuner	Digital Processor w/ 10 Station Presets
USB Charging Port	2.1 Amps
Device Storage	Weather Sealed Auxiliary Compartment
Powered By	All M18™ Batteries, 120V AC



Battery and Charger Sold Separately

Includes: 6" Auxiliary Cord, (2) AAA Batteries (For Memory Backup)

M18™ / M12™ Wireless Jobsite Speaker

2891-20

Specifications:

Modes	Bluetooth, AUX (Cable Not Included)
Bluetooth Range	100 ft
USB Charging Port	2.1 Amp
Powered By	All M18™ and M12™ Batteries



Battery and Charger Sold Separately

Includes: AC Adapter

M18™ and M12™ Multi-Voltage Charger

48-59-1812

Specifications:

Compatibility	All M18™ and M12™ Batteries
Charge Sequence	Sequential (First In, First Charged)
Integrated Hang-Holes	Yes
On-Board Indicator Light	Yes
Cell Voltage Monitoring	Yes



Batteries Sold Separately

M18™ and M12™ Rapid Charge Station

48-59-1807

Specifications:

Compatibility	All M18™ and M12™ Batteries
Charge Sequence	Charges 3 Batteries Simultaneously
Charge Speed	Charges Individual Batteries up to 40% Faster
Capacity	Holds (3) M18™ and (3) M12™ Batteries
Integrated Hang-Holes	Yes
Cell Voltage Monitoring	Yes
Pass-Through Plug	Yes



Batteries Sold Separately



M18™ and M12™ Rapid Charger

48-59-1808

Specifications:

Compatibility	All M18™ and M12™ Batteries
Charge Sequence	Sequential (First In, First Charged)
Charge Speed	Charges Individual Batteries up to 40% Faster
On-Board Indicator Light	Yes
Integrated Hang-Holes	Yes
Cell Voltage Monitoring	Yes



Batteries Sold Separately

M18™ Six-Pack Sequential Charger

48-59-1806

Specifications:

Compatibility	All M18™ Batteries
Charge Sequence	Sequential (Counter-Clockwise Rotation)
Skip Button	Manually Designate which Battery Charges First
Integrated Hang-Holes	Yes
Cell Voltage Monitoring	Yes
Pass-Through Plug	Yes



Batteries Sold Separately



M18™ AC/DC Wall and Vehicle Charger

2710-20

Specifications:

Compatibility	All M18™ Batteries
Integrated Hang-Holes	Yes
On-Board Indicator Light	Yes
Cell Voltage Monitoring	Yes



M18™ Power Source

49-24-2371

Specifications:

Powered By	All M18™ Batteries
Run-Time	Up to 18 Hours
2.1 Amp USB Port	Universal Charging for Smartphones, Tablets and Other Portable Electronic Devices



Battery Sold Separately

Powers all MILWAUKEE® M12™ Heated Gear



M18™ REDLITHIUM™ HIGH DEMAND™ 9.0 System Starter Kit

48-59-1890

Includes: (1) M18™ REDLITHIUM™ HIGH DEMAND™ 9.0 Battery Pack, Rapid Charger



M18™ REDLITHIUM™ XC5.0 System Starter Kit

48-59-1850

Includes: (1) M18™ REDLITHIUM™ XC5.0 Battery Pack, Multi-Voltage Charger



M18™ REDLITHIUM™ XC System Starter Kit

48-59-1813

Includes: (1) M18™ REDLITHIUM™ XC Battery Pack, Multi-Voltage Charger



FULL SYSTEM COMPATIBILITY

COMPACT

- Less weight and smaller size for light drilling and fastening



EXTENDED CAPACITY

- More power and run-time, great performance for all demands



HIGH DEMAND™

- Best performance for high demand applications



LIGHT APPLICATIONS

OPTIMIZING PERFORMANCE AT EVERY LEVEL

All M18™ REDLITHIUM™ batteries are compatible with all M18™ tools

HEAVY APPLICATIONS

COMPACT

- Lighter weight for less fatigue
- Compact size for increased versatility

EXTENDED CAPACITY

- Double the run-time of compact packs
- Increased performance and power

HIGH DEMAND

- Double the run-time of XC packs
- Highest power output
- Runs coolest in heavy application

M18™ REDLITHIUM™ 2.0 Compact Battery Pack

48-11-1820



M18™ REDLITHIUM™ XC6.0 Extended Capacity Battery Pack

48-11-1860



M18™ REDLITHIUM™ HIGH DEMAND™ 9.0 Battery Pack

48-11-1890



M18™ REDLITHIUM™ Compact Battery Pack

48-11-1815



M18™ REDLITHIUM™ XC5.0 Extended Capacity Battery Pack

48-11-1850



2-Pack Available
48-11-1852

M18™ REDLITHIUM™ XC4.0 Extended Capacity Battery Pack

48-11-1840



10-Pack Available
48-11-1841

M18™ REDLITHIUM™ XC Extended Capacity Battery Pack

48-11-1828



2-Pack Available
48-11-1822

UP TO **5X** MORE RUN-TIME
UP TO **35%** MORE POWER
RUNS UP TO **60%** COOLER



M18™ COMBO KITS

Kit Tool Total	2 PIECE KITS											4 PIECE KITS				LARGE KITS							
	2796-22	2897-22	2799-22CX	2697-22	2697-22CT	2795-22	2798-22CT	2691-22	2894-22	2694-22	2695-22	2899-22	2896-22	2896-22CT	2896-24	2694-24	2695-24	2696-24	2896-26	2696-26	2696-29	2695-15	
M18 FUEL™ 1/2" Hammer Drill/Driver w/ ONE-KEY™	■																						
M18 FUEL™ 1/2" Hammer Drill/Driver		■							■					■						■			
M18™ 1/2" Compact Brushless Hammer Drill/Driver			■																				
M18™ 1/2" Compact Hammer Drill/Driver				■	■					■	■					■	■	■		■	■	■	■
M18 FUEL™ 1/2" Drill/Driver w/ ONE-KEY™						■																	
M18 FUEL™ 1/2" Drill/Driver																							
M18™ 1/2" Compact Brushless Drill/Driver							■																
M18™ 1/2" Compact Drill/Driver								■															
M18™ 3/8" Right Angle Drill/Driver																					■	■	
M18 FUEL™ Drywall Screw Gun												■	■										
M18 FUEL™ 1/4" Hex Impact Driver w/ ONE-KEY™	■					■																	
M18 FUEL™ SURGE™ 1/4" Hex Hydraulic Driver											■	■	■										
M18 FUEL™ 1/4" Hex Impact Driver		■												■									
M18™ 1/4" Hex Brushless Impact Driver			■				■									■	■				■	■	■
M18™ 1/4" Hex Impact Driver*				■	■			■													■	■	■
M18™ 5/8" SDS Plus Rotary Hammer																							■
M18™ 1/2" High Torque Impact Wrench																							■
M18™ 1/2" Compact Impact Wrench																							■
M18 FUEL™ SAWZALL® Recip Saw									■					■									■
M18™ SAWZALL® Recip Saw										■					■								■
M18™ HACKZALL® One-Handed Recip Saw											■					■							■
M18 FUEL™ 6-1/2" Circular Saw																							■
M18™ 6-1/2" Circular Saw																							■
M18™ Jig Saw																							■
M18™ Multi-Tool																							■
M18™ Band Saw																							■
M18™ 5-3/8" Metal Cutting Saw																							■
M18 FUEL™ 4-1/2" / 5" Grinder Paddle Switch, No-Lock Kit																							■
M18™ 4-1/2" Cut-Off / Grinder																							■
M18™ Compact Blower																							■
M18™ LED Work Light																							■
Also Includes																							
M18™ and M12™ Multi-Voltage Charger	■	■	■	■	■	■	■	■	■	■	■	■	■	■	■	■	■	■	■	■	■	■	■
M18™ Six-Pack Sequential Charger																							■
M18™ REDLITHIUM™ Compact Battery Pack					2		2																
M18™ REDLITHIUM™ 2.0 Compact Battery Pack			1				2						2										
M18™ REDLITHIUM™ XC Extended Capacity Battery Pack				2						2				2	2	2			2	2			
M18™ REDLITHIUM™ XC4.0 Extended Capacity Battery Pack			1																				4
M18™ REDLITHIUM™ XC5.0 Extended Capacity Battery Pack	2	2				2			2	2		2	2						2				
Carrying Case	■	■				■																	
Contractor Bag			■	■	■		■	■	■	■	■	■	■	■	■	■	■	■	■	■	■	■	■

*M18™ 1/4" Hex Impact Driver is the single, variable speed model





Nothing but **HEAVY DUTY.**



**DESIGNED TO A
HIGHER STANDARD**

TEST INSTRUMENTS CATALOG





MILWAUKEE® TEST INSTRUMENTS

When it comes to test instruments, there isn't an expert out there who knows what works better than you. Milwaukee® has a proven track record of getting out in the field to understand the demands of a constantly changing workplace. By working with our users, we're designing instruments that make you more productive and help you be the best at what you do.

DESIGNED TO A HIGHER STANDARD

Milwaukee® offers a comprehensive line of Test and Measurement tools built specifically for you. Everything from our high-contrast white on black displays, to our built-in work light and voltage detection, to our rugged over-molding is designed to make your job easier. Milwaukee® also offers a rechargeable system for test instruments, powered by our M12™ REDLITHIUM™ battery. Built to last, Milwaukee® Test and Measurement tools are backed by the Milwaukee® 5 Year Warranty.

**BY THE TRADE
FOR THE
TRADE**



Nothing but **HEAVY DUTY.**

Table of Contents

THERMAL IMAGING

2260-21 M12™ 160x120 Thermal Imager

FORK METERS

2205-20 Fork Meter

2206-20 Fork Meter for HVAC/R

CLAMP METERS

2231-20 Milliamp Clamp Meter

2235-20 400 Amp Clamp Meter

2237-20 Clamp Meter

2236-20 Clamp Meter for HVAC/R

DIGITAL MULTIMETERS

2216-20 Digital Multimeter

2217-20 Digital Multimeter

2220-20 Electrical Combo Kit

VOLTAGE DETECTORS

2202-20 Voltage Detector with LED

2200-20 Voltage Detector

TEMPERATURE METERS

2265-20 LASER TEMP-GUN™ Thermometer

2266-20 LASER TEMP-GUN™ Thermometer

2276-21 LASER TEMP-GUN™ M12™ Cordless Thermometer

2277-21 LASER TEMP-GUN™ M12™ Cordless Thermometer for HVAC/R

2270-20 Contact Temp Meter

LIGHTING TESTER

2210-20 Fluorescent Lamp & Ballast Tester

INSPECTION AND DETECTION

2311-21 M-SPECTOR™ AV M12™ Cordless Multimedia Camera Kit (17mm)

2312-21 M-SPECTOR™ AV M12™ Cordless Multimedia Camera Kit (9.5mm)

2313-21 M-SPECTOR 360™ Rotating Inspection Scope

2314-21 M-SPECTOR 360™ 9 ft Rotating Inspection Scope KIT

2291-21 SUB-SCANNER™ M12™ Cordless Detection Tool Kit

2280-20 Laser Distance Meter

INSTRUMENT ACCESSORIES

M-SPECTOR™ Accessories

Accessory and Meter Cases

Electrical Accessories

Temperature Accessories

Hand Tools

Factory Service Centers

INCREASED PRODUCTIVITY

Carry Fewer Tools



Built-in LED Light



Built-in Voltage Detector

Easy to Use



Easy-to-Read White on Black Display



Trade-Specific Feature Sets

Built Tough



Rugged Over-Molding

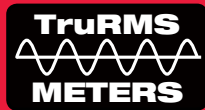


5 Year Warranty



Nothing but HEAVY DUTY.®

BEST IN CLASS DURABILITY AND SAFETY



Protection Against Dust

- Totally protected against dust **6**
- Protected against dust (No harmful deposit) **5**
- Protected against objects over 1mm (Tools / Small Wire) **4**
- Protected against objects over 2.5mm (Tools / Wire) **3**
- Protected against objects over 12mm (Fingers) **2**
- Protected against objects over 50mm (Hands) **1**
- No protection **0**

Ingress Protection Ratings



Protection Against Moisture

- 5** Protected against low pressure jets of water from all directions (Limited ingress permitted)
- 4** Protected against water sprayed from all directions (Limited ingress permitted)
- 3** Protection against sprays to 60° from the vertical
- 2** Protection against direct sprays of water up to 15° from the vertical
- 1** Protection against vertically falling drops of water
- 0** No protection



Nothing but **HEAVY DUTY.**

M12™ 160x120 Thermal Imager

2260-21

NIST #: 2260-21NST

SPECIFICATIONS

Thermal Resolution	160 x 120 Pixels
Temperature Range	14°F to 662°F (-10°C to 350°C)
Software	YES
Thermal / Visual Display	Thermal or Visual, Toggle Dedicated Key
Removable Battery	YES
Battery Charge Time	30 minutes
Battery Life	> 4 Hours
Storage Size / Type	2GB SD Card
LED Flashlight	YES
Tool Warranty	5 Year

Includes 2260-21 M12™ 160x120 Thermal Imager, 48-11-2401 M12™ REDLITHIUM™ Battery, 48-59-2401 M12™ Lithium-ion Battery Charger, 2GB SD Card, SD Card Reader, Thermal Imager Manual, Thermal Imager Report Software, USB Cable, Carrying Case, Quick Reference Guide, Manual



Broader temperature range (-10°C to 350°C) to cover more applications

Rugged over-molding protects the large LCD and camera lenses if dropped

Crisp, high resolution 160 x 120 pixel thermal images

Simple screen layout allows you to focus on getting the best images

Rugged over-molding for increased durability and grip

Ergonomic pistol grip design for ease of use

Built-in visual camera and flashlight for improved analysis

Capture thermal and visual images on each trigger pull for enhanced reporting

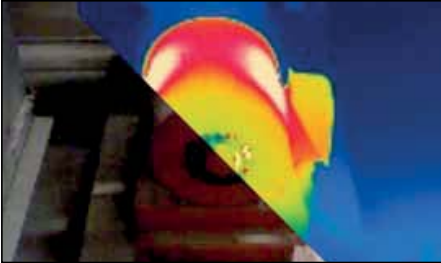


Rechargeable REDLITHIUM™ battery pack provides 4 hours of continuous run-time



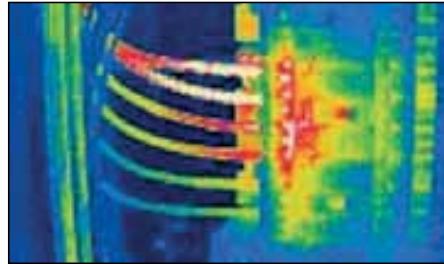
FASTER

- Toggle button easily switches the LCD between a thermal and visual image
- PC software allows you to quickly analyze images and rapidly create reports



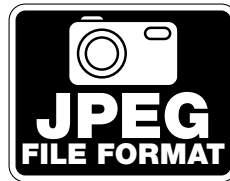
MORE VERSATILE

- Broad temperature range (14°F to 662°F) to cover more applications
- Crisp, high resolution 160 x 120 pixel Thermal images for better definition and clarity



EASIER TO USE

- Intuitive key pad layout is perfect even for infrequent users
- All thermal and visual images saved in standard JPEG format for use in any program





Nothing but **HEAVY DUTY.**

Fork Meter

2205-20

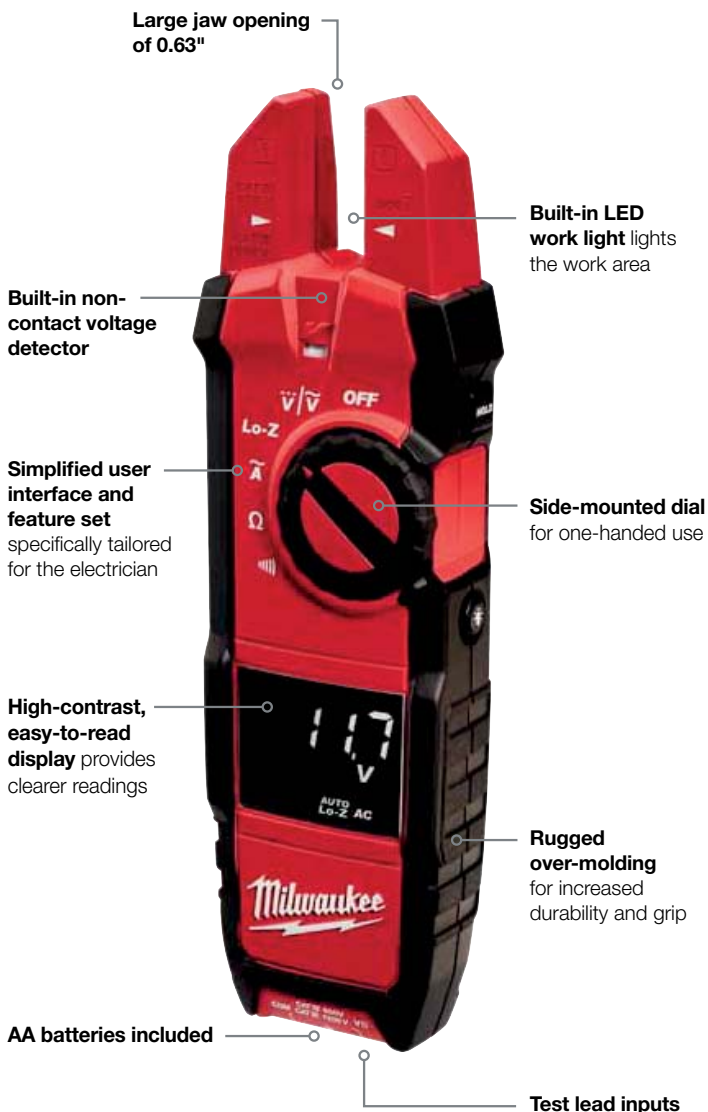
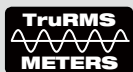
NIST #: 2205-20NST

SPECIFICATIONS

ELECTRICAL

Current AC	200A
Fork Opening	0.63"
TRMS	YES
Safety Rating	CAT IV 600V / CAT III 1000V
Voltage AC/DC	1000V
Lo-Z Measurement	YES
Resistance	40 MOhm
Continuity	Audible
Display Backlight	YES
Display Type	White on Black LCD
Non-contact Voltage	YES
LED Work Light	YES
Rugged Over-Molding	YES
Warranty	5 Years

Includes Fork Meter, (1) Test Lead Set, (2) AA Batteries, Manual



Fork Meter for HVAC/R

2206-20

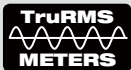
NIST #: 2206-20NST

SPECIFICATIONS

HVAC

Current AC	200A
Fork Opening	0.63"
TRMS	YES
Safety Rating	CAT IV 600V / CAT III 1000V
Microamps DC	1,000µA
Voltage AC/DC	1000V
Resistance	40 MΩ
Continuity	Audible
Capacitance	1,000µF
Contact Temperature	-40°F to 752°F (-40°C to 400°C)
Display Backlight	YES
Display Type	White on Black LCD
Non-contact Voltage	YES
LED Work Light	YES
Rugged Over-Molding	YES
Warranty	5 Years

Includes Fork Meter for HVAC/R, (1) Test Lead Set, (1) Thermocouple (Dual Banana), (2) AA Batteries, Manual





Nothing but **HEAVY DUTY.**

Milliamp Clamp Meter

2231-20

NIST #: 2231-20NST

SPECIFICATIONS

ELECTRICAL

Milliamp DC Range	0 to 99
4-20mA Resolution	0.01mA
Max Conductor Size	0.23"
Clamp Wire Length	3.5"
Display Type	High-Contrast White on Black
LED Work Light	YES
Rugged Over-Molding	YES
Warranty	5 Years
Includes	Milliamp Clamp Meter, carrying case, (2) AA Batteries, Manual



NIST



400 Amp Clamp Meter

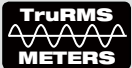
2235-20

NIST #: 2235-20NST

SPECIFICATIONS ELECTRICAL

TRMS	YES
Jaw Size	1"
Safety Rating	CAT III 600V
Current AC	400A
Voltage AC/DC	600V
Resistance	400 ohm
Continuity	Audible
HOLD	YES
Display Backlight	YES
Display Type	Standard LCD
LED Work Light	YES
Rugged Over-Molding	YES
Warranty	5 Years

Includes 400 Amp Clamp Meter,
(1) Test Lead Set,
(2) AA Batteries, Manual



NIST



Large jaw opening
easily handles wire
bundles

Thin jaw profile
for access to
tight spaces

**Built-in LED work
light** lights the
work area

**Simplified user
interface and feature
set** specifically tailored
to the electrician

Side-mounted dial
for one-handed use

**Rugged
over-molding**
for increased
durability and grip

AA batteries included

Test lead inputs





Nothing but **HEAVY DUTY.**

Clamp Meter

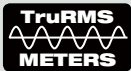
2237-20

NIST #: 2237-20NST

SPECIFICATIONS ELECTRICAL

Jaw Size	1.3"
TRMS	YES
Safety Rating	CAT III 600V
Current AC/DC	600A
Voltage AC/DC	600V
Frequency	10 kHz
Resistance	6 kOhms
Continuity	Audible
Capacitance	4000µF
Display Backlight	YES
Display Type	White on Black LCD
Non-contact Voltage	YES
LED Work Light	YES
Rugged Over-Molding	YES
Warranty	5 Years

Includes Clamp Meter, (1) Test Lead Set, (2) AA Batteries, Manual



Large jaw opening
easily handles wire bundles

Thin jaw profile
for access to tight spaces

Built-in LED work light
lights the work area

Built-in non-contact voltage detector

Simplified user interface and feature set
specifically tailored to the electrician

Side-mounted dial
for one-handed use

High-contrast, easy-to-read display
provides clearer readings

Rugged over-molding
for increased durability and grip

AA batteries included

Test lead inputs



Clamp Meter for HVAC/R

2236-20

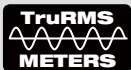
NIST #: 2236-20NST

SPECIFICATIONS

HVAC

Jaw Size	1.3"
TRMS	YES
Safety Rating	CAT III 600V
Current AC	600A
Microamps DC	600µA
Voltage AC/DC	600V
Resistance	6 kOhms
Continuity	Audible
Capacitance	4000µF
Contact Temperature	-40°F to 752°F (-40°C to 400°C)
Display Backlight	YES
Display Type	White on Black LCD
Non-contact Voltage	YES
LED Work Light	YES
Rugged Over-Molding	YES
Warranty	5 years

Includes Clamp Meter for HVAC/R, (1) Test Lead Set, (1) Thermocouple (Dual Banana), (2) AA Batteries, Manual



Large jaw opening
easily handles wire bundles

Thin jaw profile
for access to tight spaces

Built-in LED work light
lights the work area

Built-in non-contact voltage detector

Simplified user interface and feature set
for the HVAC technician

Side-mounted dial
for one-handed use

High-contrast, easy-to-read display
provides clearer readings

Rugged over-molding
for increased durability and grip

AA batteries included

Test lead inputs





Nothing but **HEAVY DUTY.**

Digital Multimeter

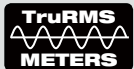
2216-20

NIST #: 2216-20NST

SPECIFICATIONS

TRMS	YES
Safety Rating	CAT III 600V
Voltage AC	6.00mV – 600V
Voltage DC	600.0mV – 600V
Frequency	2.00 Hz – 50.00 kHz
Resistance	40 MOhm
Continuity	Audible
Capacitance	1000µF
Current AC/DC	10.00A
Display Backlight	YES
Display Type	Standard LCD
HOLD / MIN / MAX	YES
Bargraph	YES
Rugged Over-Molding	YES
Accessory Attachment	Magnetic Meter Holder
Warranty	5 Years

Includes Digital Multimeter,
 (1) Test Lead Set,
 (2) AA Batteries, Manual



Slide rail for mounting accessories

High-contrast, easy-to-read display provides clearer readings



Side-mounted dial for one-handed use

Simplified user interface and feature set for the electrician and the HVAC technician

Rugged over-molding for increased durability and grip

AA batteries included

Magnetic Meter Holder 49-77-3001



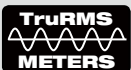
Digital Multimeter

2217-20

NIST #: 2217-20NST

SPECIFICATIONS

TRMS	YES
Safety Rating	CAT III 600V
Voltage AC	6.00mV – 600V
Voltage DC	600.0mV – 600V
Lo-Z Measurement	YES
Frequency	10 Hz – 50.00 kHz
Resistance	40 MOhm
Continuity	Audible
Capacitance	1000µF
Current AC/DC	10.00A
Contact Temperature	-40°F to 752°F (-40°C to 400°C)
Display Backlight	YES
Display Type	White on Black LCD
HOLD / MIN / MAX	YES
Bargraph	YES
Rugged Over-Molding	YES
Accessory Attachment	Magnetic Meter Holder
Warranty	5 Years
Includes	Digital Multimeter, (1) Test Lead Set, (1) Thermocouple (Dual Banana), (2) AA Batteries, Manual



NIST



Slide rail for mounting accessories

White on black high-contrast, easy-to-read display provides clearer readings

Side-mounted dial for one-handed use

Simplified user interface and feature set for the electrician and the HVAC technician

Rugged over-molding for increased durability and grip

AA batteries included



Magnetic Meter Holder 49-77-3001





Nothing but **HEAVY DUTY.**

Electrical Combo Kit

2220-20

Includes

2217-20 Digital Multimeter,
2202-20 Voltage Detector
with LED, 48-22-1901
FASTBACK™ Utility
Knife, 48-22-2114
11IN1 Screwdriver,
49-77-3001 Magnetic
Meter Holder, 48-55-0175
Meter Case, Electrical Test
Lead Set, Dual Banana
Thermocouple, Batteries
Included



**Digital
Multimeter**
2217-20

See page 17 for
more information



**Voltage
Detector
with LED**

2202-20
See page 19 for
more information



Easy blade
change

Up to 3X faster
blade opening

Gut hook
for cutting
while closed



FASTBACK™ Utility Knife
48-22-1901



11IN1
screwdriver
with patented
ECX™ bit

Can bend up to
12 gauge wire

Can strip up to
12 gauge wire



**11IN1
Screwdriver**
48-22-2114

Voltage Detector with LED

2202-20

SPECIFICATIONS

Voltage Range	50 to 1000V AC
Safety Range	CAT IV 1000V
Audible Indicator	YES
Green "ON" Indicator	YES
On / Off Button	YES
LED Work Light	YES
Battery	2 AAA
Warranty	1 year

Includes Voltage Detector with LED,
(2) AAA Batteries



Tip for checking outlets

Built-in LED light
(2202-20 only)

Green light indicates tool is on

Blinking red light indicates voltage

Voltage Detector

2200-20

SPECIFICATIONS

Voltage Range	50 to 1000V AC
Safety Range	CAT IV 1000V
Audible Indicator	YES
Green "ON" Indicator	YES
On / Off Button	YES
Battery	2 AAA
Warranty	1 year

Includes Voltage Detector,
(2) AAA Batteries



Pocket clip for easy storage

Loud beeper indicates voltage

On / Off button





Nothing but **HEAVY DUTY.**

LASER TEMP-GUN™ Thermometer

2265-20

NIST #: 2265-20NST

SPECIFICATIONS

Temperature Range	-22°F to 662°F (-30°C to 350°C)
Distance to Spot Ratio	10 to 1
Basic Accuracy	1.50%
Repeatability	0.50%
Display Resolution	0.1°F (0.1°C)
Response Time	<500 mS
Emissivity	0.95
HOLD / MAX	YES
Display Backlight	YES
Display Type	Standard LCD
ALARM (HI / LO)	YES
Rugged Over-Molding	YES
Warranty	5 Years
Includes	LASER TEMP-GUN™, (3) AA Batteries, Manual

NIST



10:1 distance to spot ratio measures a 1' spot from 10' away

Rugged over-molding for increased durability and grip

AA batteries included



LASER TEMP-GUN™ Thermometer

2266-20

NIST #: 2266-20NST

SPECIFICATIONS

Temperature Range	-22°F to 932°F (-30°C to 500°C)
Distance to Spot Ratio	12 to 1
Basic Accuracy	1.50%
Contact Temperature Input	-22°F to 842°F (-30°C to 450°C)
Repeatability	0.50%
Display Resolution	0.1°F (0.1°C)
Response Time	<500 mS
Emissivity	0.95
HOLD / MAX	YES
Display Backlight	YES
Display Type	White on Black LCD
ALARM (HI / LO)	YES
Rugged Over-Molding	YES
Warranty	5 Years

Includes LASER TEMP-GUN™,
(3) AA Batteries, Manual

NIST





Nothing but **HEAVY DUTY.**

LASER TEMP-GUN™ M12™ Cordless Thermometer

2276-21

NIST #: 2276-21NST

SPECIFICATIONS

ELECTRICAL KIT

Temperature Range	-22°F to 1472°F (-30°C to 800°C)
Basic Accuracy	1.50%
Distance to Spot Ratio	40 to 1
Contact Temperature	-40°F to 1022°F (-40°C to 550°C)
Display Resolution	0.1°F (0.1°C)
Response Time	<500 mS
Emissivity	Adjustable 0.10 to 1.00
MIN / MAX / AVG / DIF	YES
Data Storage	YES, 20 Points
Alarm (HI / LO)	YES
Locking Trigger	YES
Display Backlight	YES
Display Type	White on Black LCD
LED Flood Light	YES
Rugged Over-Molding	YES
Battery Type	M12™ Rechargeable REDLITHIUM™
Warranty	5 Years
Includes	2276-20 M12™ LASER TEMP-GUN™, (1) Thermocouple (K-Type), 48-11-2401 M12™ REDLITHIUM™ Battery, 48-59-2401 M12™ Lithium-ion Battery Charger, Carrying Case, Manual

NIST



Tool-only also available.

2276-20

NIST #: 2276-20NST

Thermocouple input for contact temperature measurement

High-contrast, easy-to-read display provides clearer readings

Simplified user interface and feature set specifically tailored for the electrician

Rugged over-molding for increased durability and grip

Ergonomic pistol grip design for ease of use

Built-in LED flood light lights the work area

40:1 distance to spot ratio measures a 1' spot from 40' away

M12 Rechargeable REDLITHIUM™ battery pack provides power for unmatched performance



LASER TEMP-GUN™ M12™ Cordless Thermometer for HVAC/R

2277-21

NIST #: 2277-21NST

SPECIFICATIONS

HVAC KIT

Temperature Range	-22°F to 1472°F (-30°C to 800°C)
Basic Accuracy	1.50%
Distance to Spot Ratio	40 to 1
Contact Temperature	-40°F to 1022°F (-40°C to 550°C)
Display Resolution	0.1°F (0.1°C)
Response Time	<500 ms
Emissivity	Adjustable 0.10 to 1.00
MIN / MAX / AVG / DIF	YES
Data Storage	YES, 20 Points
Alarm (HI / LO)	YES
Locking Trigger	YES
Display Backlight	YES
Display Type	White on Black LCD
LED Flood Light	YES
Humidity Measurement	YES
Dew Point Measurement	YES
Rugged Over-Molding	YES
Battery Type	M12™ Rechargeable REDLITHIUM™
Warranty	5 Years

Includes 2277-20 M12™ LASER TEMP-GUN™ for HVAC/R, (1) Thermocouple (K-Type), (48-11-2401 M12™ REDLITHIUM™ Battery, 48-59-2401 M12™ Lithium-ion Battery Charger, Carrying Case, Manual



Tool-only also available.

2277-20

NIST #: 2277-20NST





Nothing but **HEAVY DUTY.**

Contact Temp Meter

2270-20

NIST #: 2270-20NST

SPECIFICATIONS

Temperature Range	2,500°F to -328°F (1,372°C to -200°C)
Basic Accuracy	.1% of reading
Dual Temperature Input	YES
Display Resolution	0.1°F (0.1°C)
MAX / MIN / AVG	YES
Display Backlight	YES
Display Type	High-contrast White on Black
Rugged Over-Molding	YES
Warranty	5 Years
K-Type Thermocouple	YES
Display Values	T1, T2, T1-T2

Includes (1) Contact Temp Meter (2270-20), (3) AA Batteries, (2) K-Type Thermocouple, (1) Magnet Strap, Manual

NIST



Fluorescent Lamp & Ballast Tester

2210-20

SPECIFICATIONS

LAMP Test	T5, T8, T12
BALLAST Test	Electronic
PIN Test	Dual
Operating Temperature	-10°C to 50°C
Storage Temperature	-40°C to 60°C
Two Meter Drop Test	YES
Antenna Adapter	YES
Antenna Storage	Fully Retractable Inside Tool
Replaceable Antenna	YES
Battery Life	35 Hours
Auto Battery Off	Turns Off After 20 Minutes
Battery Type	Alkaline (AA)
Tool Warranty	5 Years

Includes Fluorescent Lamp & Ballast Tester, Soft Carry Case, Antenna Adapter, Manual, (4) AA Batteries



Removable antenna adapter
improves lamp test response

Built-in LED work light
illuminates dark work spaces

2.5' fully retractable antenna
for extended reach when testing

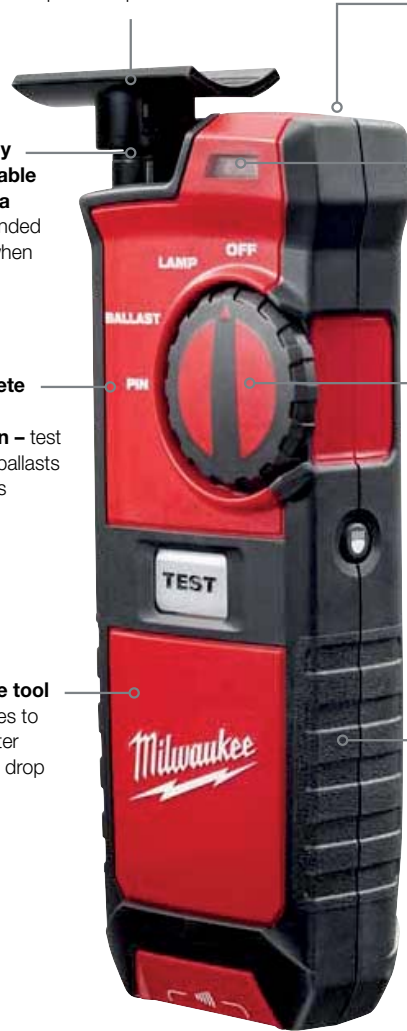
Visual and audible indicators
provide easy feedback

Complete 3-in-1 solution – test lamps, ballasts and pins

Dial and buttons
positioned for one-handed use

Durable tool
continues to work after 6.5 foot drop

Rugged over-molding
for increased durability and grip





Nothing but **HEAVY DUTY.**

M-SPECTOR™ AV M12™ Cordless Multimedia Camera Kit

17mm Digital
2311-21

9.5mm Analog
2312-21

SPECIFICATIONS

2311-21	17mm
Camera Head	Digital
2312-21	9.5mm
Camera Head	Analog
Cable Length	3'
LCD Display	3.5" LCD
Display Resolution	320 x 240
Brightness Control	4X LED
Zoom	4X
Image Rotation	YES
Audio Capability	YES
Photo Capability	3,800 Photos
Video Recording	45 Min
Run-Time	12 Hrs.

Includes 2311-20 M-SPECTOR™ Camera, 48-11-2401 M12™ REDLITHIUM™ Battery, 48-59-2401 M12™ Lithium-ion Battery Charger, 3' Digital (17mm) Camera Cable, 2GB SD Card, USB Cable, Carrying Case



2GB SD card (included) records up to:

- 45 minutes audio and video
- 3,800 high resolution images



M-SPECTOR 360™ Rotating Inspection Scope

9mm Digital
2313-21

SPECIFICATIONS

Cable Length	3'
LCD Display	2.7"
High-Resolution Color Display Resolution	320 x 240
Image Sensor Resolution	640 x 480
LED Worklight	4 LED's, 5 Settings
Run-Time	12 Hrs.

Includes 2313-21 M-SPECTOR 360™ Kit, 48-11-2401 M12™ REDLITHIUM™ Battery, 48-59-2401 M12™ Lithium-ion Battery Charger, Carrying Case, Hook, Magnet and Mirror Attachments



Tool-only also available.
2313-20

Rotating screen – screen rotates providing the user fluid image control

Optimized 2.7" LCD – digital image and larger screen delivers crisp, clear image

9mm 640 x 480 digital image sensor – best in class image quality in tight spaces

Enhanced cable – improved durability and maneuverability

M12

Rechargeable REDLITHIUM™ battery pack provides power for unmatched performance

4 surround LED lights – best in class brightness without shadow or glare





Nothing but **HEAVY DUTY.**

M-SPECTOR 360™ 9 ft Rotating Inspection Scope Kit

9mm Digital
2314-21

SPECIFICATIONS

Cable Length	9'
LCD Display	2.7" High-Resolution Color
Display Resolution	320 x 240
Image Sensor	640 x 480
Pixel Density	
LED Worklight	4 LED's, 5 Settings
Run-Time	12 Hrs.

Includes 2314-21 M-SPECTOR 360™ Kit, 48-11-2401 M12™ REDLITHIUM™ Battery, 48-59-2401 M12™ Lithium-ion Battery Charger, Carrying Case, Hook Magnet and Mirror Attachments, Plumbing Ball Attachment



Rotating screen – screen rotates providing the user fluid image control



Optimized 2.7" LCD – digital image and larger screen delivers crisp, clear image

Enhanced cable – improved durability and maneuverability

9mm 640 x 480 digital image sensor – best in class image quality in tight spaces



Rechargeable REDLITHIUM™ battery pack provides power for unmatched performance

4 surround LED lights – best in class brightness without shadow or glare



SUB-SCANNER™ M12™ Cordless Detection Tool Kit

2291-21

SPECIFICATIONS

Max Scanning Depth	
Stud Mode	1.5"
Metal Mode	6"
Measurement Accuracy	
Stud Center	0.25"
Metal Center	0.5"
Specifications	
Auto Calibration	YES
Battery Type	M12™ Rechargeable REDLITHIUM™
Warranty	5 Years
Includes	2291-20 SUB-SCANNER™ M12™ Detection Tool, 48-11-2401 M12™ REDLITHIUM™ Battery, 48-59-2401 M12™ Lithium-ion Battery Charger, Carrying Case, Manual



Tool-only also available.
2291-20

Four wheel design for durability and smooth, accurate measurement

Detects metal and wood by scanning into concrete, drywall, wood and metal

Detects rebar up to 6" deep in concrete

High-contrast, easy-to-read display provides clearer readings

Rugged over-molding for increased durability and grip

Ergonomic handle position for ease of use



M12

Rechargeable REDLITHIUM™ battery pack provides power for unmatched performance





Nothing but **HEAVY DUTY.**

Laser Distance Meter

2280-20

SPECIFICATIONS

Basic Accuracy	$\pm 0.059"$ (± 1.5 mm)
Distance Range	0.16' (0.05m) to 197' (60m)
Arithmetic Functions	YES
6 Measure Functions	Length, Area, Volume, Indirect Measurement (Pythagoras), Stake Out, Timer

Includes (2) AAA Batteries, Carrying Case, Manual



M-SPECTOR™ Accessories

For use with:

- M-SPECTOR™ Digital Inspection Camera Kit (2300-20)



**M-SPECTOR™ (17mm)
3' Replacement
Digital Camera Cable
48-53-0115**



**M-SPECTOR™
3' Extension Cable (17mm)
48-53-0110**

M-SPECTOR™ AV Accessories

For use with:

- M-SPECTOR™ AV M12™ Cordless Multimedia Camera Kit (17mm) (2311-21)
- M-SPECTOR™ AV M12™ Cordless Multimedia Camera Kit (9.5mm) (2312-21)



**M-SPECTOR™ AV (17mm)
3' Replacement
Digital Camera Cable
48-53-0125**



**M-SPECTOR™ AV (9.5mm)
3' Replacement
Analog Camera Cable
48-53-0130**



**M-SPECTOR™ AV (17mm) 8'
Extension Cable
48-53-0140**



**M-SPECTOR™ AV (17mm)
3' Extension Cable
48-53-0141**

M-SPECTOR™ 360 Accessories

For use with:

- Milwaukee Models 23-13-20, 2313-21 and 2314-21



**M-SPECTOR 360™
Scope Head Attachment Set
48-53-0112**



**M-SPECTOR 360™
Pipe Guide Attachment
48-53-0113**



Nothing but **HEAVY DUTY.**

Accessory Cases



Rollup Accessory Case
48-55-0165



Zippered Accessory Case
48-55-0170



Rollup Accessory Case SPECIFICATIONS

Material	Nylon
Velcro	YES
Inside Compartments	4 Pockets with Velcro
Strap for Hanging	YES
Warranty	1 Year



Zippered Accessory Case SPECIFICATIONS

Material	Nylon
Zippered	YES
Inside Pocket	YES
Strap for Hanging	YES
Warranty	1 Year



Meter Cases



Meter Case
48-55-0175



Large Meter Case
48-55-0180



Meter Case SPECIFICATIONS

Material	Nylon
Zippered	YES
Inside Pocket	YES
Strap for Hanging	YES
Warranty	1 Year



Large Meter Case SPECIFICATIONS

Material	Nylon
Zippered	YES
Inside Pocket	YES
Strap for Hanging	YES
Warranty	1 Year



Electrical Accessories



Electrical Test Lead Set
49-77-1001

Electrical Test Lead Set SPECIFICATIONS

Maximum Voltage	1000V
Maximum Current	10A
Safety Rating	CAT IV 600V / CAT III 1000V
Overmold Material	PVC
Length	55 inches (1.4 meter)
Warranty	1 Year



Electrical Test Leads
49-77-1003

Electrical Test Leads SPECIFICATIONS

Maximum Voltage	1000V
Maximum Current	10A
Safety Rating	CAT IV 600V / CAT III 1000V
Overmold Material	PVC
Length	39 inches (1.0 meter)
Warranty	1 Year



Electrical Test Probes
49-77-1004

Electrical Test Probes SPECIFICATIONS

Maximum Voltage	1000V
Maximum Current	10A
Safety Rating	CAT IV 600V / CAT III 1000V
Overmold Material	PVC
Probe Metal Used	Stainless Steel
Warranty	1 Year



Electrical Alligator Clips
49-77-1005

Electrical Alligator Clips SPECIFICATIONS

Maximum Voltage	1000V
Maximum Current	10A
Safety Rating	CAT IV 600V / CAT III 1000V
Overmold Material	PVC
Probe Metal Used	Stainless Steel
Warranty	1 Year



Temperature Accessories



**Thermocouple
(Dual Banana)**
49-77-2001

**Thermocouple
(K-Type)**
49-77-2002

Thermocouple (Dual Banana and K-Type) SPECIFICATIONS

Temperature Range	-40°F to 500°F (-40°C to 260°C)
Temperature Accuracy	2.5%
Overmold Material	Teflon
Length	39 inches (1.0 meter)
Warranty	1 Year





Nothing but **HEAVY DUTY.**

Hand Tools

10IN1 Ratchet ECX™ Multi-Bit Driver

48-22-2301



Power
Groove
Bits



Extended
Reach

10IN1 SAE Hex Key Driver

48-22-2104



Power
Groove
Bits



Wire
Stripper

4 Pc SAE Hollow Shaft Nut Driver Set

48-22-2404



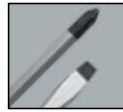
Drives
Square
Fasteners



3" Hollow
Shaft

2 Pc Steel Cap Demolition Screwdriver Set

48-22-2002



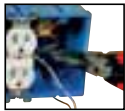
Compression
Forged
Tips



High Impact
Metal Core

6IN1 Combination Pliers

48-22-3069



Pliers



Wire
Cutter

6IN1 Lineman's Pliers

48-22-3309



Pliers



Fish Tape
Puller

3 Pc 1000V Insulated Screwdriver Set

48-22-2202



Slim Drive
Shaft



Dual Layer
Insulation

Quick Adjust Reaming Pliers

48-22-3110



Quick Adjust



Reaming
Head

Rely only on high-grade power tools on our virtual shelves.