

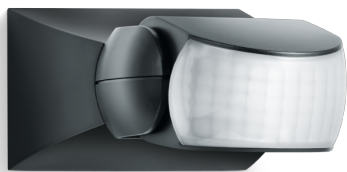
Data sheet

Motion detector

IS 1

black

EAN 4007841600419



Function description

Targeted detection and attractive price. Infrared motion detector IS 1, for indoors and out, ideal for targeted coverage of small areas, 120° angle of coverage, reach up to 10 m, selectable time and twilight threshold, sensor turns through 30° and tilts through 180° for exact adjustment of the detection zone.

Technical specifications

Type	Motion detectors
Dimensions (L x W x H)	50 x 80 x 120 mm
Mains power supply	230 – 240 V , 50 / 50 Hz
Sensor Technology	passive infrared
Application, place	Indoors, outdoors
Type of installation	Surface wiring
Switching zones	260 switching zones
Electronic scalability	No
Mechanical scalability	No
Optimum mounting height	2 m
Detection angle	120 °
Sneak-by guard	No
Capability of masking out individual segments	Yes
Reach, radial	r = 3 m (9 m ²)
Reach, tangential	r = 10 m (105 m ²)
Twilight setting TEACH	No
Twilight setting	2 – 2000 lx
Time setting	8 sec – 35 min

Data sheet



Motion detector

IS 1

black

EAN 4007841600419

Technical specifications

Switching output 1, resistive	500 W
Switching output 1, number of LEDs / fluorescent lamps	4 pcs.
Constant-lighting control	No
Basic light level function	No
With remote control	No
Interconnection	Yes
IP rating	IP54
Material	Plastic
Ambient temperature	-20 – 50 °C
Colour	black
Colour, RAL	9005
Manufacturer's Warranty	3 years
Version	black
PU1, EAN	4007841600419