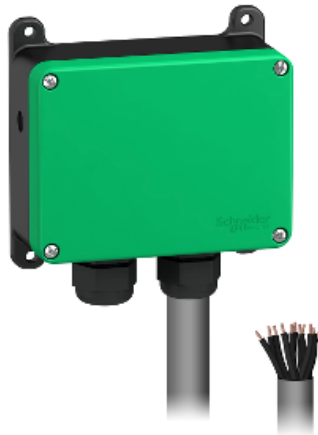


Product data sheet

Characteristics

ZARB10WSP

10 Relays - Small size - cable gland - pre-wired with 1.5 m of cable



Main

Range of product	Harmony XAR
Product or component type	Base station
Device short name	ZARB
Product specific application	Hoisting applications Material handling

Complementary

Cable entry	Cable pre-wired
Material	ABS + PC
[Us] rated supply voltage	48...240 V AC
Provided equipment	Internal antenna
Nominal output current	0.5 A at 48 V AC conforming to IEC 60947-5-1
Number of relays	10
Relay type	Motion relay outputs (9 NO) Auxiliary relay outputs (1 NO)
Safety outputs	2 NC relay outputs
Maximum switching current	90 mA AC
Maximum switching voltage	240 V AC (+/- 20 %)
Communication network type	Wireless : Zigbee
Transmission frequency	2.4 GHz
Maximum sensing distance	100 m in free field
Fixing mode	4 holes
Electrical durability	100000 cycles
Mechanical durability	10000000 cycles
Width	120 mm
Height	117 mm
Depth	51 mm
Product weight	0.88 kg

Environment

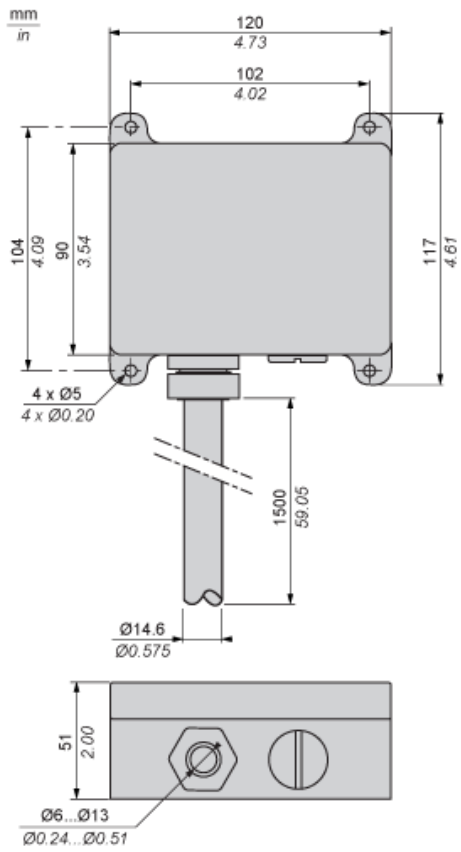
IP degree of protection	IP66
Radio agreement	IC

	FCC
Relative humidity	0...97 %
Ambient air temperature for operation	-20...55 °C
Ambient air temperature for storage	-40...70 °C
Product certifications	CE
Environmental characteristic	RoHS compliant

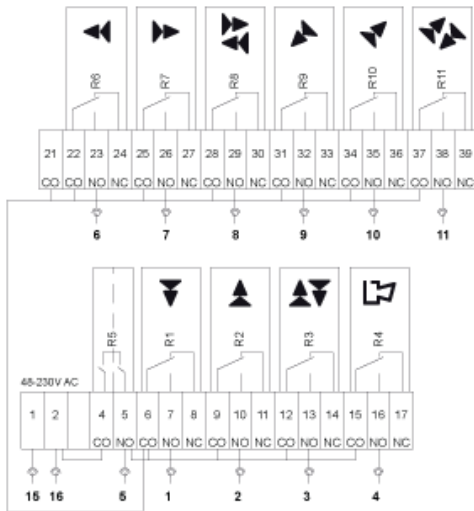
Offer Sustainability

RoHS (date code: YYWW)	Compliant - since 0844 - Schneider Electric declaration of conformity Schneider Electric declaration of conformity
------------------------	---

Dimensions



Wiring Diagram



Signal	Cable number	
Power supply	15	
Power supply	16	
Not connected	-	
Stop relay R5	Common	-
	Output (NO type)	5
Relay R1	Common	-
	Output (NO type)	1
	Output (NC type)	-
Relay R2	Common	-
	Output (NO type)	2
	Output (NC type)	-
Relay R3	Common	-
	Output (NO type)	3
	Output (NC type)	-
Relay R4	Common	-
	Output (NO type)	4
	Output (NC type)	-
Common	-	
Relay R6	Common	-
	Output (NO type)	6
	Output (NC type)	-
Relay R7	Common	-
	Output (NO type)	7

Signal		Cable number
	Output (NC type)	-
Relay R8	Common	-
	Output (NO type)	8
	Output (NC type)	-
Relay R9	Common	-
	Output (NO type)	9
	Output (NC type)	-
Relay R10	Common	-
	Output (NO type)	10
	Output (NC type)	-
Relay R11	Common	-
	Output (NO type)	11
	Output (NC type)	-