



### Main

Range of product	OsiSense XX
Sensor type	Ultrasonic sensor
Series name	General purpose
Sensor name	XX7
Sensor design	Flat form 74 x 30 x 16
Detection system	Diffuse
[Sn] nominal sensing distance	0.25 m fixed
Material	Plastic
Type of output signal	Discrete
Discrete output function	1 NO
Wiring technique	3-wire
Discrete output type	NPN
[Us] rated supply voltage	12...24 V DC with reverse polarity protection
Electrical connection	Male connector M12 4 pins
[Sd] sensing range	0.051...0.254 m
Beam angle	14 °
IP degree of protection	IP67 conforming to IEC 60529

### Complementary

Enclosure material	ULTEM
Front material	Silicone
Supply voltage limits	10...28 V DC
[Sa] assured operating distance	0.051...0.254 m
Maximum differential travel	0.35 mm
Blind zone	0...51 mm
Transmission frequency	500 kHz
Repeat accuracy	0.7 %
Minimum size of detected object	Cylinder diameter 1.6 mm
Status LED	1 LED (green) for supply on 1 LED (yellow) for output state
Current consumption	60 mA

Disclaimer: This documentation is not intended as a substitute for and is not to be used for determining suitability or reliability of these products for specific user applications

Maximum switching current	100 mA
Voltage drop	< 1 V
Switching frequency	<= 80 Hz
Delay first up	350 ms
Delay response	5 ms
Delay recovery	5 ms
Marking	CE
Height	30 mm
Width	17 mm
Depth	85 mm
Product weight	0.05 kg

## Environment

Standards	IEC 60947-5-2
Product certifications	UL
Ambient air temperature for operation	0...50 °C
Ambient air temperature for storage	-40...80 °C
Vibration resistance	+/-1 mm conforming to IEC 60068-2-6 10...55 Hz
Shock resistance	30 gn in all 3 axes for 11 ms conforming to IEC 60068-2-27
Resistance to electrostatic discharge	8 kV level 4 conforming to IEC 61000-4-2
Resistance to electromagnetic fields	10 V/m level 3 conforming to IEC 61000-4-3
Resistance to fast transients	1 kV level 3 conforming to IEC 61000-4-4

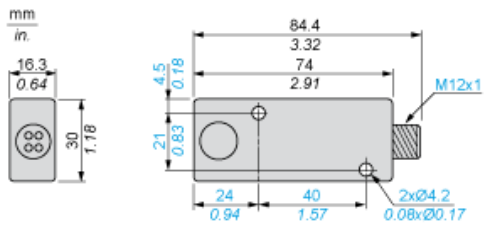
## Offer Sustainability

RoHS (date code: YYWW)	Compliant - since 1140 - Schneider Electric declaration of conformity <a href="#">Schneider Electric declaration of conformity</a>
REACH	Reference contains SVHC above the threshold - Go to CaP for more details <a href="#">Go to CaP for more details</a>
Product end of life instructions	Available <a href="#">End of Life Information</a>

## Contractual warranty

Warranty period	18 months
-----------------	-----------

Dimensions

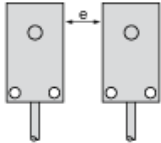


---

Minimum Mounting Distances

---

Side by side



e :      respect the distances indicated on the detection curves

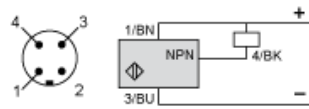
---

Wiring Diagram

---

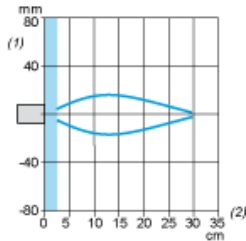
3-Wire Type

NO outputs, NPN



(1)	(+)
(3)	(-)
(4)	Output
BN	Brown
BU	Blue
BK	Black

Curves



- (1) Parallel movement
- (2) Distance
- (3) Blind zone for diffuse sensors.