



JPM902A-R6  
JPM906A-R6

## GigaBase® CAT5e Component Level Patch Panels

Make patching transitions from horizontal cable to typical stranded cable.

Meet Category 5e component performance requirements.



### Customer Support Information

Order toll-free in the U.S.: Call 877-877-BBOX (outside U.S. call 724-746-5500)  
FREE technical support 24 hours a day, 7 days a week: Call 877-877-2269 or fax 724-746-0746  
Mailing address: Black Box Corporation, 1000 Park Drive, Lawrence, PA 15055-1018  
Web site: [www.blackbox.com](http://www.blackbox.com) • E-mail: [info@blackbox.com](mailto:info@blackbox.com)

# GigaBase CAT5e Component Level Patch Panels

---

## 1. Specifications

**Standards** — T568A and T568B

**Connectors** — JPM902A-R6: (24) RJ-45, (24) 4-pair 110 punchdown;  
JPM906A-R6: (48) RJ-45, (48) 4-pair 110 punchdown

**Size** — JPM902A-R6: 1.75"H (1U) x 19"W x 5.25"D (4.4 x 48.3 x 13.4 cm);  
JPM906A-R6: 3.5"H (2U) x 19"W x 5.25"D (8.9 x 48.3 x 13.4 cm)

**Weight (including optional bar installed)** —

JPM902A-R6: 2.09 lb. (0.95 kg);  
JPM906A-R6: 4.18 lb. (1.9 kg)

## 2. Introduction

The Black Box® GigaBase® CAT5e Patch Panels are component-level panels that enable users to make patching transitions from horizontal cable to typical stranded patch cable. These sturdy panels meet Category 5e component level performance requirements, and universal wiring enables each cable to be terminated to either T568A or T568B wiring schemes. In addition, this patch panel supports an optional rear cable management bar to assist and organize your final bulk cable termination. Simply follow the color-coded guides on the panel; they identify the sequence of cable pair terminations.

After ordering a GigaBase CAT5e Patch Panel, you should have received the following items:

- (1) GigaBase CAT5e Patch Panel
- (8) or (16) cable ties
- (4) 10-32 cuphead screws
- (4) 12-24 cuphead screws
- (1) bag of stuffer caps
- (1) Cable Management Bar Kit for each 24 ports, Kit includes (3 support pieces and 2 screws)
- This users' manual

If anything is missing or damaged, please contact Black Box at 877-877-2269 or [info@blackbox.com](mailto:info@blackbox.com).

You will also need a punchdown tool (we suggest part number FT025A) to install the patch panel. The punchdown tool is not included with your patch panel.

## 3. Installation

1. Make sure that the screws on each of the four corners of the patch panel are tightly secured to your rack or cabinet. If necessary, use a screwdriver to tighten each screw.
2. Prepare the cable by stripping about 2 inches (5.1 cm) of the cable jacket. Be careful not to damage the twisted wire!
3. Next, punch down the cable. Place each wire pair next to the appropriate wiring color/label. Refer to Figures 1 and 2 for T568A and T568B color codes.

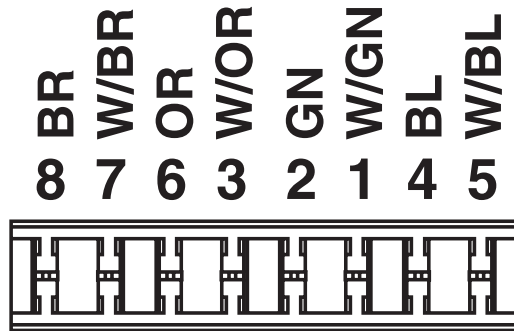


Figure 1. Color codes on the T568A side of the wiring label.

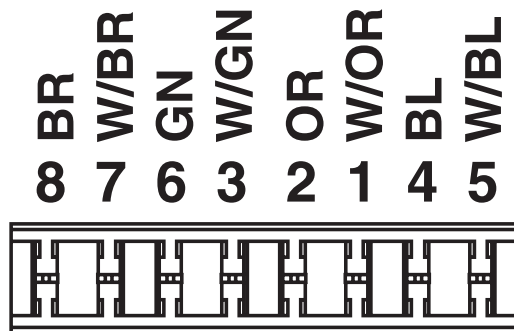


Figure 2. Color codes on the T568B side of the wiring label.

*NOTE: For best performance, keep the untwisted part of the wire less than 0.5 inches (1.3 cm) long.*

Using a punchdown tool, terminate each wire. Push the 110 punchdown tool to the edge of the 110 connector to trim the conductors. See Figure 3.

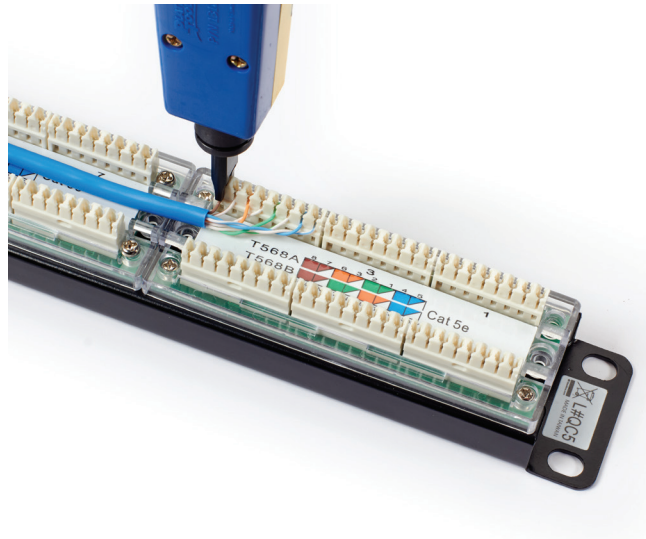


Figure 3. Terminating the wire conductors.

4. Optional: Place the stuffer caps on the terminated 110 blocks for added strain relief.
5. Optional: If you choose to use the cable management bar, assemble the support bar as shown in Figure 4. There are two screws supplied for each cable management bar supplied. Use one screw at each end to assemble the support bar.



Figure 4. Assemble the support bar.

Before you begin to attach the cable support bar to the patch panel, make sure you have made all your after terminations in a row where the support bar will be mounted. Remove the top left screw and top right screw on the outer most plastic cover. Get your assembled cable management bar and use the double hooks to clips the bar to the plastic covers on the panel.

After the cable management bar is attached in place, re-install the two screws to firmly secure the cable management bar to the panel. Repeat for all other support bars you wish to install (see Figure 5).

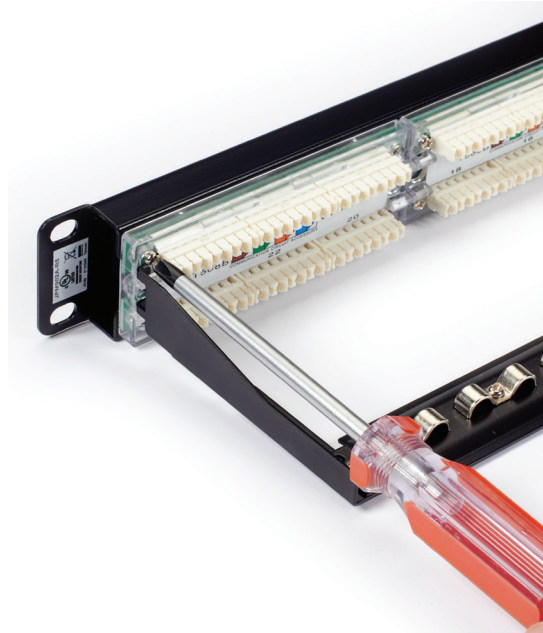


Figure 5. Re-installing the top screws.

6. Secure the horizontal cable to the cable management bar. Loosen the single screw and attach the horizontal cable under the clamp.
7. Finally, connect the patch cord. Plug the patch cord into the patch panel, then connect it to the network equipment.  
Installation is complete.







## About Black Box

Black Box provides an extensive range of networking and infrastructure products. You'll find everything from cabinets and racks and power and surge protection products to media converters and Ethernet switches all supported by free, live 24/7 Tech support available in 60 seconds or less.

© Copyright 2018. Black Box Corporation. All rights reserved. Black Box®, the Double Diamond logo, and GigaBase® are registered trademarks of BB Technologies, Inc. Any third-party trademarks appearing in this manual are acknowledged to be the property of their respective owners.