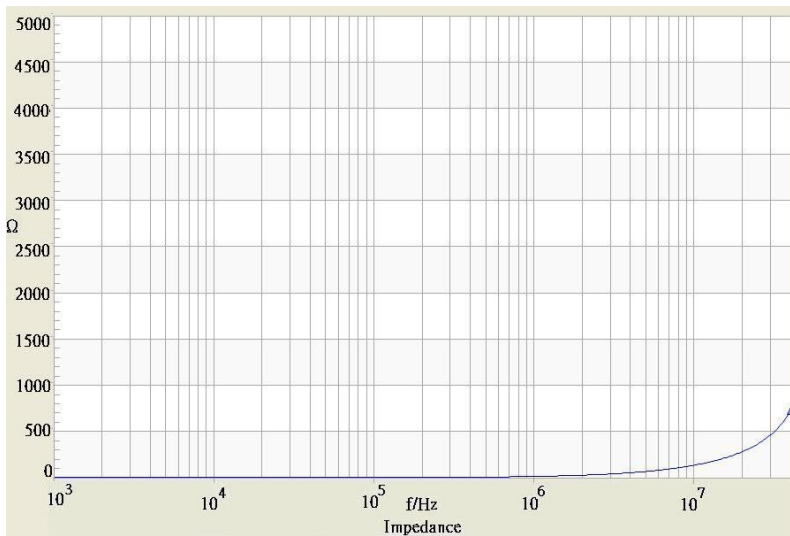


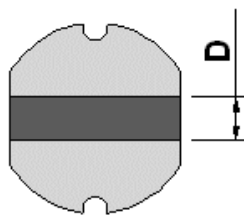
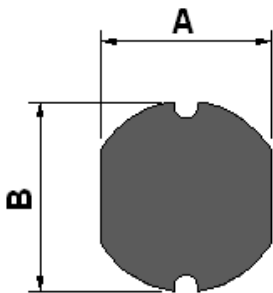
<b>Order Code</b>	<b>TCK-059</b>
<b>Inductance</b>	2.2 $\mu$ H $\pm$ 20% (at 1 kHz / 250 mV)
<b>Impedance (DCR)</b>	25 mOhm max.
<b>Rated Current</b>	4.8 A max.
<b>Operating Temperature</b>	-40°C to +125°C



### Impedance Curve

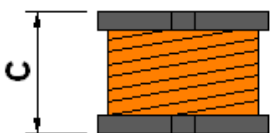


### Outline Dimensions



#### Dimensions [mm]

<b>A</b>	5.2 $\pm$ 0.5
<b>B</b>	5.8 $\pm$ 0.5
<b>C</b>	4.5 $\pm$ 0.55
<b>D</b>	2.3 typ.
<b>E</b>	5.5
<b>F</b>	2.15
<b>G</b>	1.7



#### PCB PATTERN

