

DIALIGHT PART NUMBER	PACKAGING	LED COLOR
597-7701-102F	SAMPLE STRIP	RED/GREEN BI-COLOR
597-7701-107F	7" REEL	
597-7721-102F	SAMPLE STRIP	YELLOW/GREEN BI-COLOR
597-7721-107F	7" REEL	
597-7731-102F	SAMPLE STRIP	RED/YELLOW BI-COLOR
597-7731-107F	7" REEL	

REV	ECN NO	REVISIONS	DRN	CKD	APP	DATE
A		NEW RELEASE	AJF	KLJ	NO	12-17-09

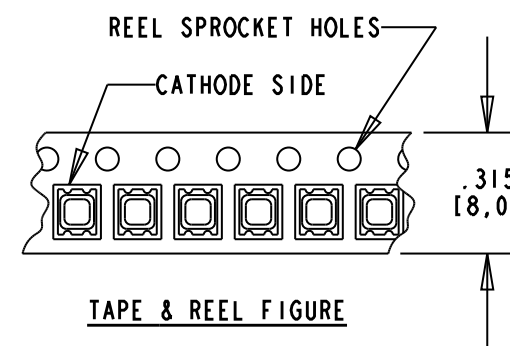
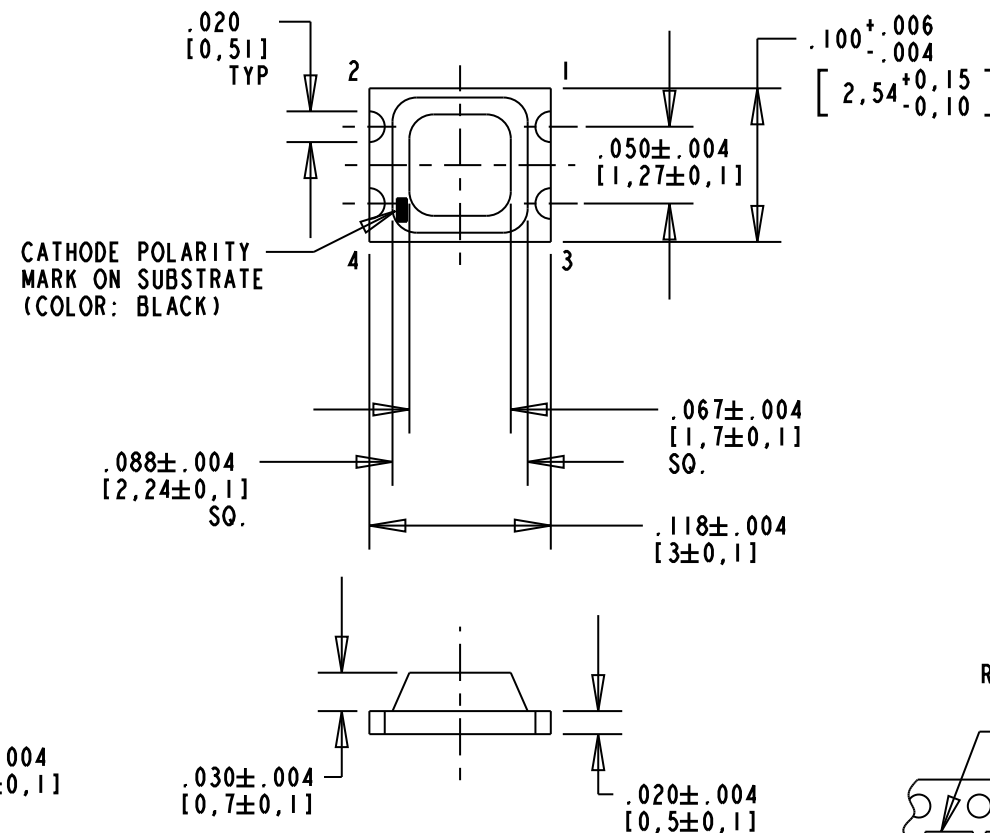
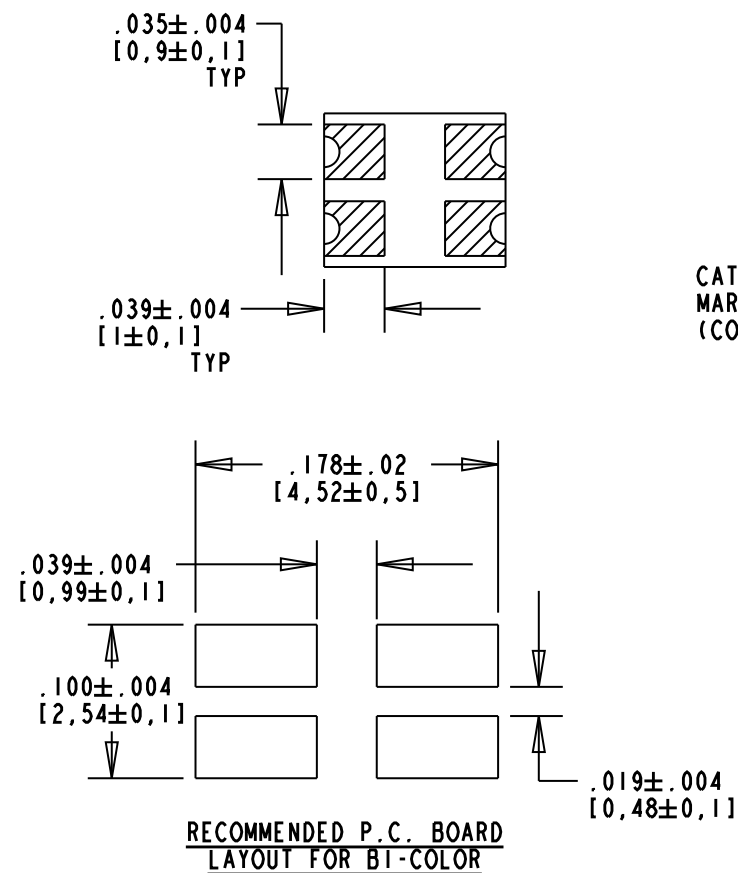
OPERATING CHARACTERISTICS AT 25°C AMBIENT												
COLOR	I _f (mA)	FORWARD VOLTAGE (V)		LUMINOUS INTENSITY (mcd)			REVERSE CURRENT (μA)	DOMINANT WAVELENGTH (nm)			LIGHT EMISSION ANGLE (DEGREES)	LED CHIP
		TYP	MAX	MIN	TYP	MAX		MAX	MIN	TYP		
RED	20	2.0	2.6	4.0	10.0	15.0	10	613	620	625	170	GaAsP
GREEN	20	2.0	2.6	6.0	12.0	22.0	10	562	565	572	170	GaP
YELLOW	20	2.1	2.8	3.0	6.0	10.0	10	580	585	588	160	GaAsP



ATTENTION:
OBSERVE PRECAUTIONS FOR
HANDLING ELECTROSTATIC
SENSITIVE DEVICES

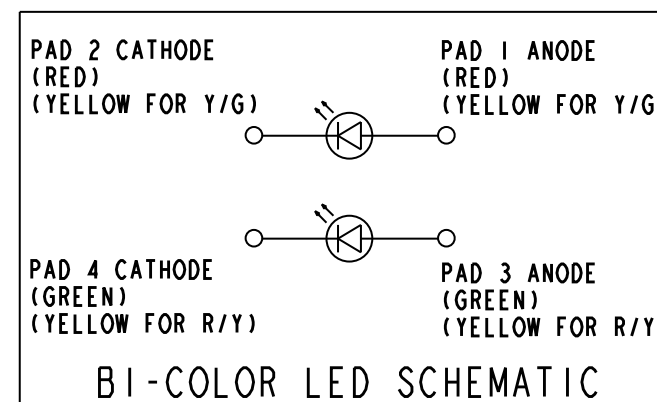
NOTES:

- SOLDER ADHERANCE: EACH PAD PER MIL-STD-202E, METHOD 208C.
- SUFFIX -102F FOR 20-PCS ON A SAMPLE STRIP.
- SUFFIX -107F FOR 180mm DIA. REEL, 8mm WIDE TAPE, PACKAGED 3000 PCS PER REEL WITH A PITCH OF 4mm.
- TAPE AND REEL AS PER EIA STANDARD 481-1, WITH CATHODE TOWARD SPROCKET.
- DIALIGHT PART NUMBER: 597-77XX-1XXF.
- TAPE AND REEL LEDS MAY REQUIRE RE-TAPING AFTER TWELVE MONTHS.
- PIN NUMBERS FOR REFERENCE ONLY, DESIGNATION NON-EXISTENT ON PART.
- DEVICES HAVE A MOISTURE SENSITIVITY LEVEL OF "2a". CAUTION LABEL APPLIED AS PER JEDEC STD. 033.
- THIS ASSEMBLY CONTAINS ELECTROSTATIC DISCHARGE SENSITIVE DEVICES (ESDS). MAINTAIN ALL PRECAUTIONARY MEASURES DURING ASSEMBLY, HANDLING AND STORAGE IN ACCORDANCE WITH IPC-A-610.



RoHS COMPLIANT 597-77XX-1XXF
Part Numbers with the "F" suffix ending are RoHS Compliant. For example: 597-7701-102F
Reel and bag packaging are marked with "RoHS Compliant" label or equivalent markings. These parts can be used with RoHS reflow profile. Parts can be wave soldered, dip soldered or hand soldered using typical lead-free soldering process with max 260°C temp. for 5 sec.

ABSOLUTE MAXIMUM RATING AT 25°C AMBIENT	RED	GREEN	YELLOW	UNITS
POWER DISSIPATION	65	65	70	mW
CONTINUOUS FORWARD CURRENT	25			mA
PEAK FORWARD CURRENT (10% DUTY CYCLE, T _w = 1 msec)	100			mA
DERATE LINEAR FROM 25°C	0.33			mA/°C
REVERSE VOLTAGE	4			V
OPERATING TEMPERATURE	-30 TO +75			°C
STORAGE TEMPERATURE	-30 TO +85			°C
SOLDERING TEMPERATURE (10 SEC MAX)	260			°C



THIS DRAWING AND THE CONTENTS HEREIN ARE CONFIDENTIAL AND THE SOLE PROPERTY OF DIALIGHT. REPRODUCTION OF THIS DRAWING OR CONSTRUCTION OF ANY PARTS WITHIN THIS DRAWING ARE FORBIDDEN WITHOUT THE WRITTEN CONSENT OF DIALIGHT.		
SCALE: 8.000	DRAWING NUMBER	REV
ALL DIM'S IN: INCHES (MM)	C-17805	A
TOLERANCES: UNLESS OTHERWISE SPECIFIED	TITLE	
FRACTIONS: ±1/64	BI-COLOR SMT LED	
DECIMALS (.XX): ±.02	MATERIAL	
DECIMALS (.XXX): ±.015	Dialight	
ANGLES: ±3°	1501 ROUTE 34 SOUTH FARMINGDALE, NJ 07727	
FINISH:	FSCM 83330	SHEET 1 OF 1 FAMILY TABLE: