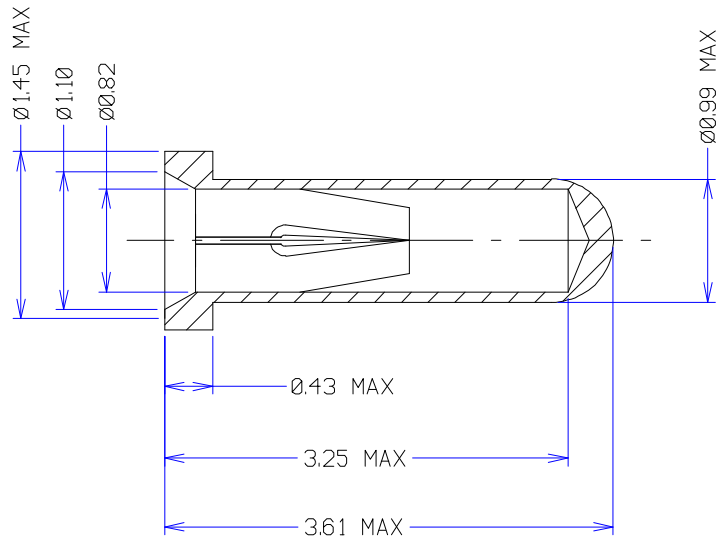


Customer Information Sheet

DRAWING No.- H3153-XX SHEET 2 OF 2 IF IN DOUBT - ASK © NOT TO SCALE THIRD ANGLE PROJECTION ALL DIMENSIONS IN mm



MATERIAL: SHELL - BRASS CZ121
CONTACT - BERYLLIUM COPPER

FINISH:

Ø5= GOLD SHELL 0.05 μ /0.10 μ
GOLD CLIP 0.3 μ MINIMUM

Ø1= 90/10 TIN/LEAD SHELL
GOLD CLIP

T6= 90/10 TIN/LEAD SHELL
90/10 TIN/LEAD CLIP

ALL WITH COPPER 1 μ MINIMUM NICKEL UNDERCOAT

PIN DIAMETER - 0.41 TO 0.51
MINIMUM PIN LENGTH - 2.0mm
MAXIMUM PIN LENGTH - 3.2mm

MOUNTING HOLE Ø1.0/Ø1.1

CONTACT RESISTANCE - 25 MILLIOHMS MAXIMUM
CURRENT RATING - 2 AMPS MAXIMUM

INSERTION FORCE WITH Ø0.50 PIN = 6.0N MAXIMUM
WITHDRAWAL FORCE FOR Ø0.50 PIN = 0.5N MINIMUM

MINIMUM POSITIVE CONTACT AT 2.0 TO MAXIMUM
DEPTH 3.2

7	15.05.96	3312
A	24.08.92	----

ISS.	DATE	C/N
------	------	-----

APPROVED:

CHECKED:

DRAWN: A. LIOTTA

CUSTOMER REF.

ASSEMBLY DRG:

HARWIN

HARWIN INC
U.S.A.
TEL: (812) 285 0055
FAX: (812) 285 0056

HARWIN PLC
U.K.
TEL: 01705 370451
FAX: 01705 324010

HARWIN PTE
SINGAPORE
TEL: 65 7794909
FAX: 65 7793868

HARWIN CONNECTORS
KOREA
TEL: 822 521 0747
FAX: 822 521 0749

TOLERANCES

X. = ± 1 mm
X.X = ± 0.25 mm
X.XX = ± 0.10 mm
X.XXX = ± 0.01 mm
ANGLES = $\pm 1^\circ$
UNLESS STATED

MATERIAL:

SEE ABOVE

FINISH:

SEE ABOVE

S/AREA:

mm²

TITLE:

SUB-MINIATURE
SOCKET ASSY

DRAWING NUMBER:

H3153-XX

SHT
2
OF
2