

# PRO-ELEC



## LED WALL LIGHT Model: PEL01322

**Please read these instructions carefully before use and retain for future reference.**

### **IMPORTANT SAFETY INFORMATION**

- When using electrical appliances basic safety precautions should always be followed.
- Check that the voltage indicated on the rating plate corresponds with that of the local network before connecting the appliance to the mains power supply.

### **Safety Information for Installation and Operation**

- Avoid excessive force when installing.
- Always install on a surface that can support the weight of the fixture.

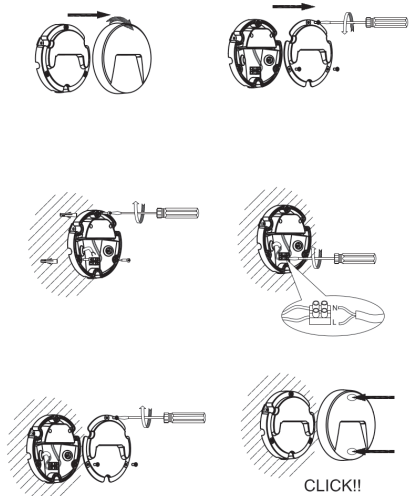
## INSTALLATION

- Turn off or isolate the mains supply.
- Unclip and remove the front trim piece.
- Remove the 3 screws securing the lens assembly and remove it.
- Offer the rear part of the unit to the wall in the desired position with reference to the supply wiring and mark the location of the 3 mounting holes.
- Drill the wall where marked taking care not to drill through hidden wiring or pipework and fit the wall plugs.
- Insert the supply wiring through either of the grommets and place the rear part of the unit against the wall and attach with the screws into the wall plugs.
- Connect the mains supply wiring to the terminal block as follows:

Connect the positive supply wire (brown or red) to the terminal marked L.

Connect the neutral supply wire (blue or black) to the terminal marked N.

- Replace the lens assembly and tighten the 3 screws.
- Clip the front trim onto the unit making sure it's fully engaged.
- Restore the mains supply.



## CLEANING AND MAINTENANCE

- Clean only with a damp cloth with a little liquid detergent. Do not use any chemicals, abrasives or solvents that may damage the product.

## SPECIFICATIONS

Voltage	220-240V~50Hz <input type="checkbox"/>
Colour Temp	4000K
IP rating	IP65
Lamp type	LED non replaceable



### INFORMATION ON WASTE DISPOSAL FOR CONSUMERS OF ELECTRICAL & ELECTRONIC EQUIPMENT.

When this product has reached the end of its life it must be treated as Waste Electrical & Electronic Equipment (WEEE). Any WEEE marked products must not be mixed with general household waste, but kept separate for the treatment, recovery and recycling of the materials used. Contact your local authority for details of recycling schemes in your area.



Made in China. PR2 9PP

Man Rev 1.0