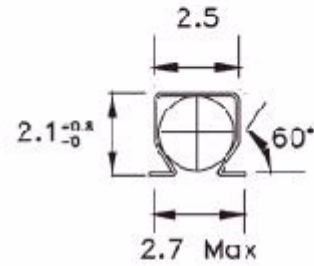
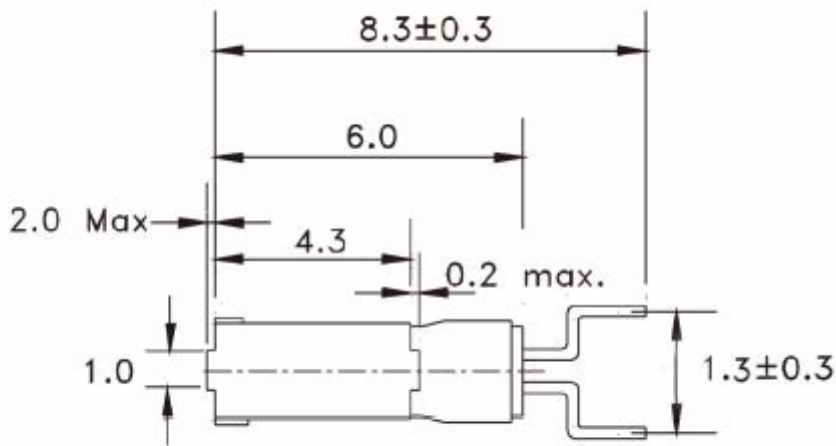


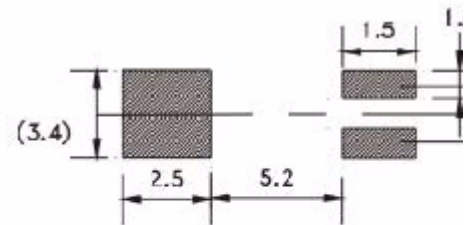
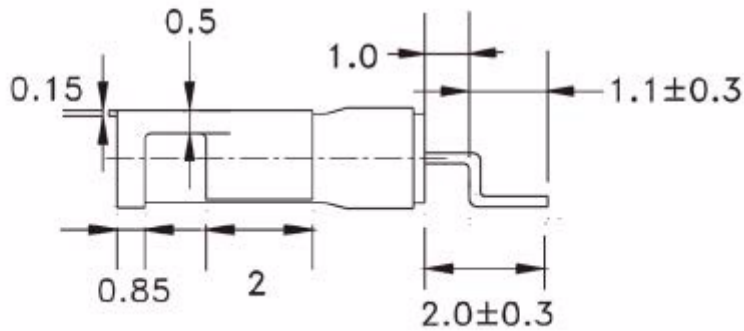


**SPECIFICATION  
CONTROL DRAWING  
Crystal Resonator**

**FREQUENCY  
32.768000kHz**



Recommended Land Pattern



Holder Style	2x6 Cyl
Mode	Fundamental
Adjustment Tolerance	± 20PPM at 25°C
Operating Temp. Range	-40°C to +85°C
Load Capacitance	12.5 pF
ESR	40,000 Ohm
Drive Level	1 uW mW
Static Capacitance (C0)	1.1 Typical pF
Dynamic Capacitance (C1)	1.8 Typical fF
Ageing	5ppm 1st year max
Marking	Mark Std

Amdt Date	Change Note	AEL Code
		<b>X32K768S073</b>
		<b>Issue Ref</b> A