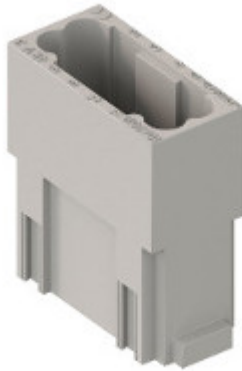


Part number


# CX 12 DM



## Brief description:

male insert, 12 poles, crimp connection, 10A, 250V, 1 module, modular units MIXO series

Product description	
<b>Model</b>	male insert
<b>Version</b>	Crimp connection
<b>Product type</b>	for male contacts 10A
<b>Family</b>	MIXO series, customizable inserts
<b>Size</b>	1 module
<b>N. of poles</b>	12 poles
Technical data	
<b>Current</b>	10 A (A.C.)
<b>Voltage</b>	250 V
<b>Rated impulse withstand voltage</b>	4 kV
<b>Pollution degree</b>	3
<b>Operating temperature range (min, max)</b>	-40°C ... +125°C
<b>Contacts material</b>	Silver plated, gold plated
<b>Mating cycles</b>	≥ 500
<b>IP degree of protection</b>	IP20 without enclosure, IP65/IP66/IP68/IP69 with enclosure
Further technical details	
<b>Characteristics according to EN 61984</b>	10A 250V 4kV 3
<b>Insulation resistance</b>	≥ 10 GΩ
<b>Contact resistance</b>	≤ 3 mΩ
<b>Rated voltage according to UL/CSA</b>	600V
<b>UL 94 flammability rating</b>	V-0
<b>Weight</b>	8,80 g

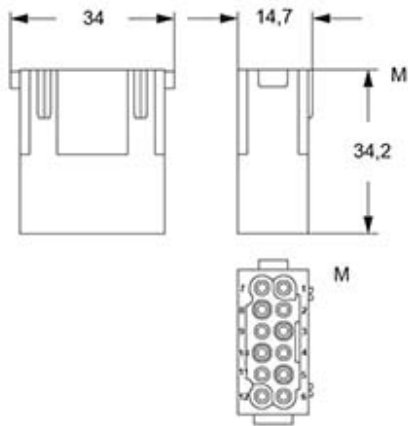
Approvals / Standards	
<b>Reference standard</b>	EN 61984:2009-06
<b>Quality mark</b>	 DNV-GL, EAC
<b>Conformity</b>	CQC, CE
General ordering information	
<b>EAN13 code</b>	8015747042062
<b>Tariff number</b>	85369095
Packaging Information	
<b>Packaging length</b>	180,00 mm
<b>Packaging height</b>	130,00 mm
<b>Packaging width</b>	150,00 mm
<b>Packaging weight</b>	0,76 kg
<b>Packaging volume</b>	3,51 dm <sup>3</sup>
<b>Packaging description</b>	Carton box
<b>Packaging quantity</b>	60 Pcs
<b>Packaging EAN code</b>	8015747221320
<b>Sub-packaging length</b>	35,00 mm
<b>Sub-packaging height</b>	40,00 mm
<b>Sub-packaging width</b>	155,00 mm
<b>Sub-packaging weight</b>	0,13 kg
<b>Sub-packaging volume</b>	0,22 dm <sup>3</sup>
<b>Sub-packaging description</b>	Carton tray
<b>Sub-packaging quantity</b>	10 Pcs
<b>Sub-packaging EAN barcode</b>	8015747042079

Part number

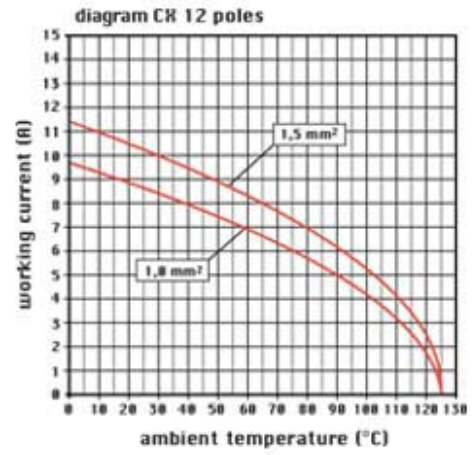
# CX 12 DM



## Catalogue drawings



## Derating curves



## Notes

the modular inserts must be installed in suitable frames which in turn are installed in traditional housings or COB panel support