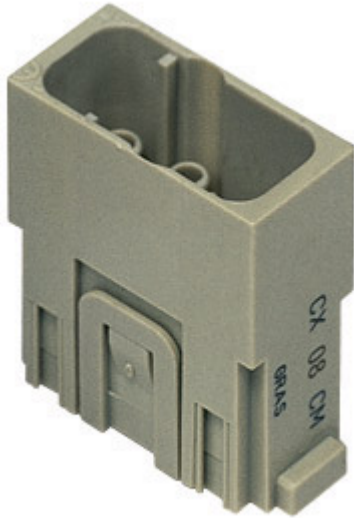


Part number

CX 08 CM



Brief description:

male insert, 8 poles, crimp connections, 16A, 400V, 6kV, 3, 1 module, modular units series MIXO

Product description

Model	male insert
Version	Crimp connection
Product type	for male contacts 16A
Family	MIXO series, customizable inserts
Size	1 module
N. of poles	8 poles

Technical data

Current	16 A (A.C. and D.C.)
Voltage	400 V
Rated impulse withstand voltage	6 kV
Pollution degree	3
Operating temperature range (min, max)	-40°C ... +125°C
IP degree of protection	IP20 without enclosure, IP65/IP66/IP68/IP69 with enclosure

Further technical details

Characteristics according to EN 61984	16A 400V 6kV 3; 16A 400/690V 6kV 2
Insulation resistance	≥ 10 GΩ
Rated voltage according to UL/CSA	600V
UL 94 flammability rating	V-0
Weight	8,60 g

Approvals / Standards

Reference standard	EN 61984:2009-06
Quality mark	 , EAC
Conformity	CQC, CE

General ordering information

EAN13 code	8015747129220
Tariff number	85369095

Packaging Information

Packaging length	180,00 mm
Packaging height	130,00 mm
Packaging width	150,00 mm
Packaging weight	0,71 kg
Packaging volume	3,51 dm ³
Packaging description	Carton box
Packaging quantity	60 Pcs
Packaging EAN code	8015747221306
Sub-packaging length	35,00 mm
Sub-packaging height	40,00 mm
Sub-packaging width	155,00 mm
Sub-packaging weight	0,12 kg
Sub-packaging volume	0,22 dm ³
Sub-packaging description	Carton tray
Sub-packaging quantity	10 Pcs
Sub-packaging EAN barcode	8015747129251

Part number

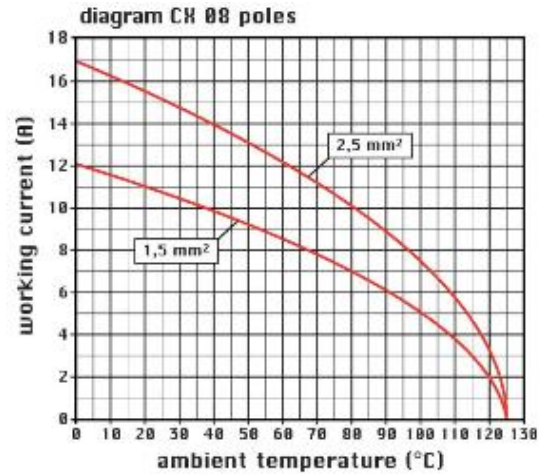
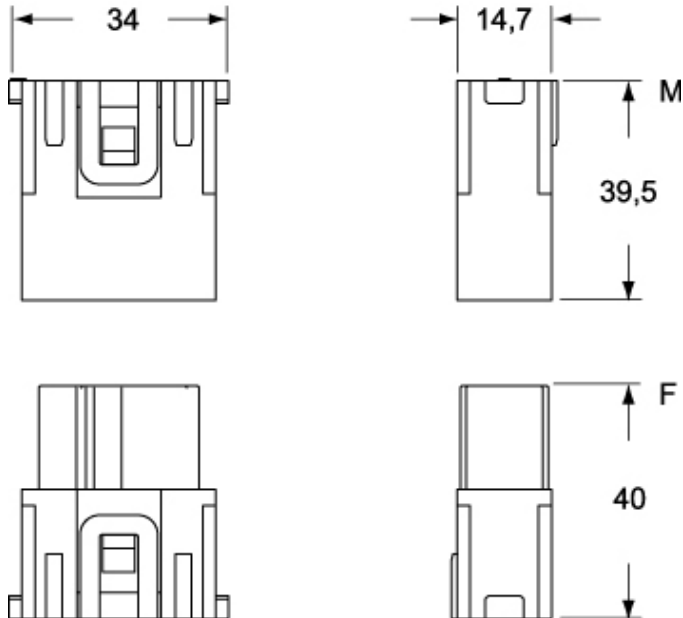
CX 08 CM



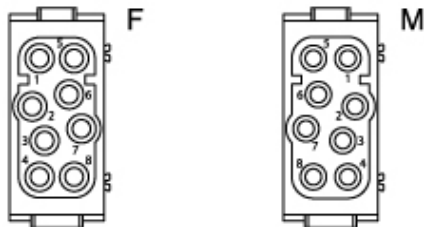
Catalogue drawings

Catalogue drawings

CX 08 CM



CX 08 CF



Notes

CX 08 C inserts:

- characteristics according to EN 61984:
(16A 400V 6kV 3)
(16A 400/690V 6kV 2)
- footprint 1 modules
- for maximum current load, see the insert load curve section
- for contact crimping instructions, please see the crimping tool section (16A contacts, CCF, CCM and CC...AN series)

the modular inserts must be installed in suitable frames which in turn are installed in traditional housings or COB panel support