


Part number  
**CX 03 4F**



**Brief description:**

female insert, 3 poles, crimp connections, 40A 690V, 6kV, 3, 1 module, modular units series MIXO

Product description	
<b>Model</b>	female insert
<b>Version</b>	Crimp connection
<b>Product type</b>	for female contacts 40A
<b>Family</b>	MIXO series, customizable inserts
<b>Size</b>	1 module
<b>N. of poles</b>	3 poles
Technical data	
<b>Current</b>	40 A (A.C. and D.C.)
<b>Voltage</b>	400 - 690 V
<b>Rated impulse withstand voltage</b>	6 kV
<b>Pollution degree</b>	3
<b>Operating temperature range (min, max)</b>	-40°C ... +125°C
<b>IP degree of protection</b>	IP20 without enclosure, IP65/IP66/IP68/IP69 with enclosure
Further technical details	
<b>Characteristics according to EN 61984</b>	40A 400/690V 6kV 3
<b>Insulation resistance</b>	≥ 10 GΩ
<b>Rated voltage according to UL/CSA</b>	600V
<b>UL 94 flammability rating</b>	V-0
<b>Weight</b>	11,50 g

Approvals / Standards	
<b>Reference standard</b>	EN 61984:2009-06
<b>Quality mark</b>	 , EAC
<b>Conformity</b>	CQC, CE
General ordering information	
<b>EAN13 code</b>	8015747041706
<b>Tariff number</b>	85369095
Packaging Information	
<b>Packaging length</b>	180,00 mm
<b>Packaging height</b>	130,00 mm
<b>Packaging width</b>	150,00 mm
<b>Packaging weight</b>	0,90 kg
<b>Packaging volume</b>	3,51 dm <sup>3</sup>
<b>Packaging description</b>	Carton box
<b>Packaging quantity</b>	60 Pcs
<b>Packaging EAN code</b>	8015747221177
<b>Sub-packaging length</b>	35,00 mm
<b>Sub-packaging height</b>	40,00 mm
<b>Sub-packaging width</b>	155,00 mm
<b>Sub-packaging weight</b>	0,15 kg
<b>Sub-packaging volume</b>	0,22 dm <sup>3</sup>
<b>Sub-packaging description</b>	Carton tray
<b>Sub-packaging quantity</b>	10 Pcs
<b>Sub-packaging EAN barcode</b>	8015747041713

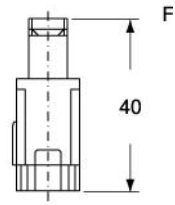
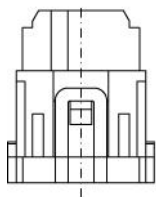
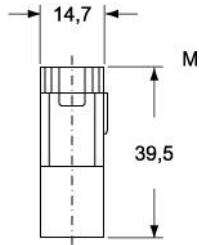
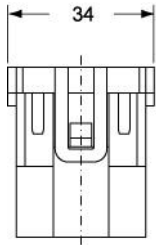
Part number

# CX 03 4F

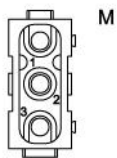
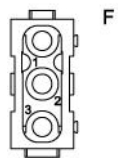


Catalogue drawings

CX 03 4M

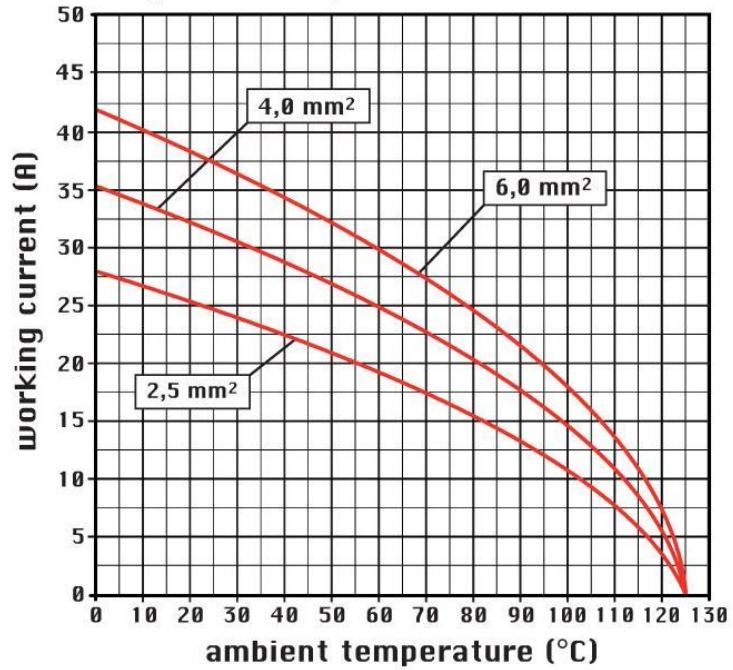


CX 03 4F



Catalogue drawings

diagram CX 03 poles



## Notes

CX 03 4 inserts:

- characteristics according to EN 61984:  
(40A 400/690V 6kV 3)
- footprint 1 module
- for maximum current load, see the insert load curve section
- for contact crimping instructions, please see the crimping tool section (40A contacts, CXF and CXM series)

the modular inserts must be installed in suitable frames which in turn are installed in traditional housings or COB panel support