

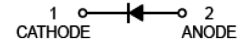
Schottky Barrier Diode

multicomp PRO



Features:

- Low Turn-On Voltage
- Fast Switching
- Ultra-Small Surface Mount Package
- PN Junction Guard Ring for Transient and ESD Protection



SOD-323

Applications:

Schottky barrier detector and switching diode

Max. Rating @ T_A = 25°C unless otherwise specified

Parameter	Symbol	Limits	Unit
Peak repetitive peak reverse voltage Working peak reverse voltage DC reverse Voltage	V _{RRM} V _{RMS} V _R	30	V
RMS reverse voltage	V _{R(RMS)}	21	V
Average rectified output current	I _O	100	mA
Forward continuous current	I _F	200	mA
Repetitive peak forward current	I _{FRM}	300	mA
Forward surge current @t<1.0s	I _{FSM}	600	mA
Power dissipation	P _D	200	mW
Thermal resistance, junction to ambient air	R _{θJA}	500	°C/W
Junction temperature	T _j	125	°C
Storage temperature range	T _{STG}	-65 to +150	°C

Electrical Characteristics @ T_A = 25°C unless otherwise specified

Parameter	Symbol	Conditions	Min.	Max.	Unit
Reverse breakdown voltage	V _{(BR)R}	I _R = 100μA	30	-	V
Forward voltage	V _{F1}	I _F = 0.1mA	-	240	mV
	V _{F2}	I _F = 1mA	-	320	mV
	V _{F3}	I _F = 10mA	-	400	mV
	V _{F4}	I _F = 30mA	-	500	mV
	V _{F5}	I _F = 100mA	-	1,000	mV
Reverse leakage current	I _R	V _R = 25V	-	2	μA
Reverse recovery time	t _{rr}	I _F = 10mA, I _R = 10mA to 1mA R _L = 100Ω	-	5	ns
Junction capacitance	C _J	V _R = 1V, f = 1MHz	-	10	pF

Newark.com/multicomp-pro
Farnell.com/multicomp-pro
Element14.com/multicomp-pro

multicomp PRO

Typical Characteristics @ $T_A = 25^\circ\text{C}$ unless otherwise specified

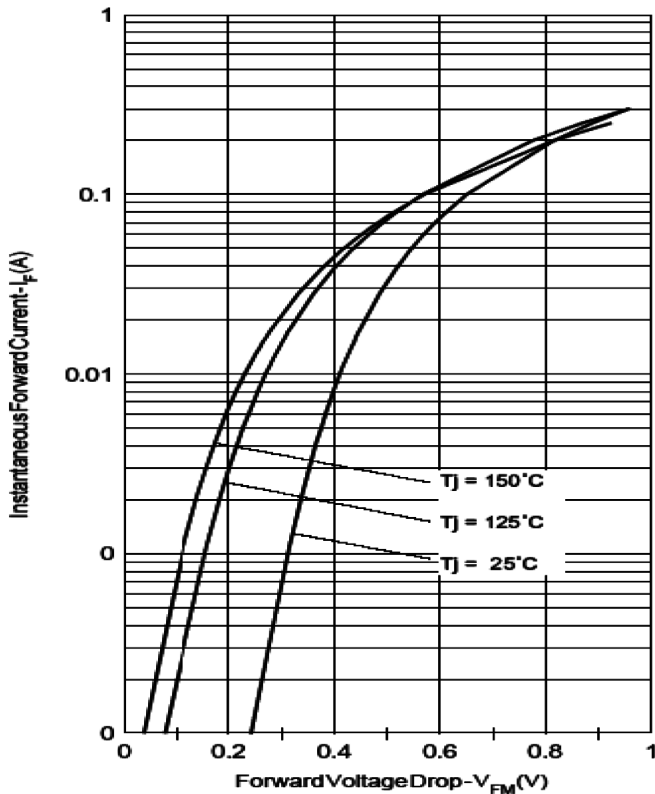


Fig. 1 - Max. Forward Voltage Drop Characteristics (Per Leg)

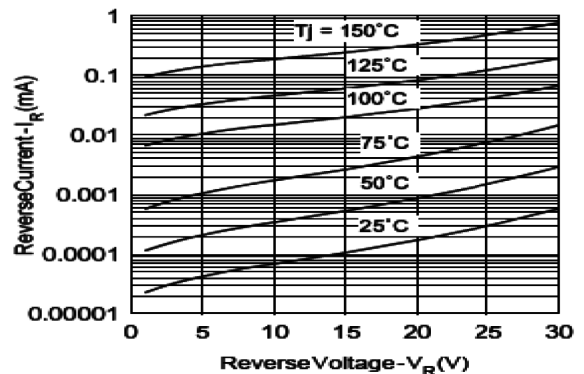


Fig. 2 - Typical Values Of Reverse Current Vs. Reverse Voltage (Per Leg)

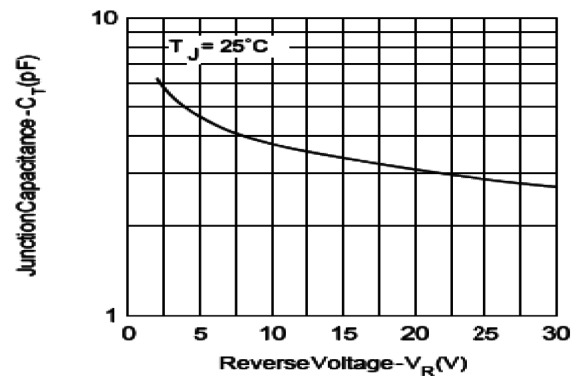


Fig. 3 - Typical Junction Capacitance Vs. Reverse Voltage (Per Leg)

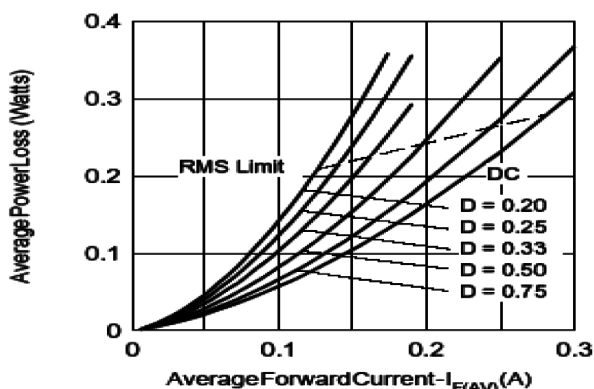


Fig. 4 - Forward Power Loss Characteristics

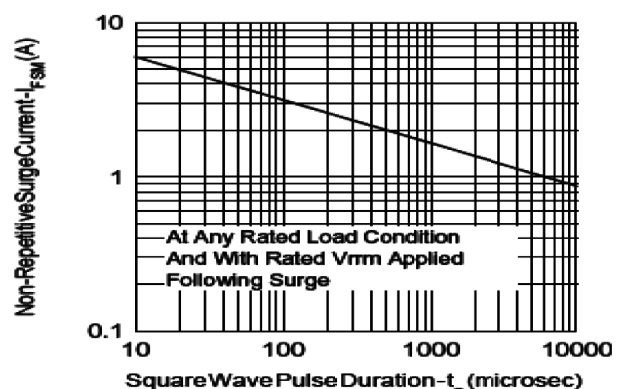
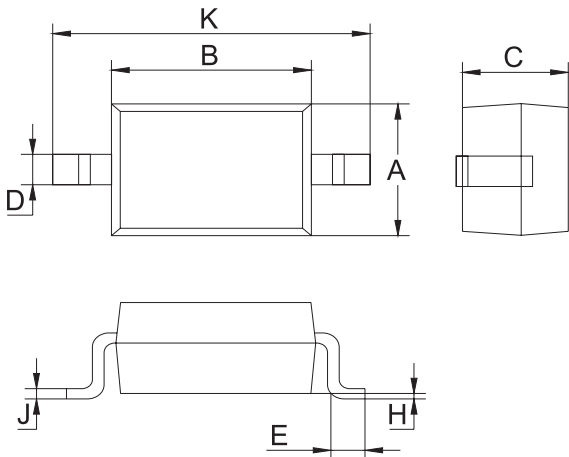


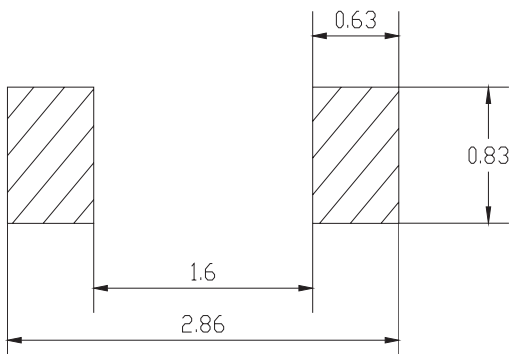
Fig. 5 - Max. Non-Repetitive Surge Current

Plastic surface mounted package



SOD-323		
Dim	Min	Max
A	1.275	1.325
B	1.675	1.725
C	0.9 Typical	
D	0.25	0.35
E	0.27	0.37
H	0.02	0.1
J	0.1 Typical	
K	2.6	2.7
All Dimensions in mm		

Soldering Footprint



Unit : mm

Package Information

Device	Package	Shipping
BAT54WS-7-F	SOD-323	3,000 / Tape & Reel

Part Number Table

Description	Part Number
Schottky Barrier Diode	BAT54WS-7-F

Important Notice : This data sheet and its contents (the "Information") belong to the members of the AVNET group of companies (the "Group") or are licensed to it. No licence is granted for the use of it other than for information purposes in connection with the products to which it relates. No licence of any intellectual property rights is granted. The Information is subject to change without notice and replaces all data sheets previously supplied. The Information supplied is believed to be accurate but the Group assumes no responsibility for its accuracy or completeness, any error in or omission from it or for any use made of it. Users of this data sheet should check for themselves the Information and the suitability of the products for their purpose and not make any assumptions based on information included or omitted. Liability for loss or damage resulting from any reliance on the Information or use of it (including liability resulting from negligence or where the Group was aware of the possibility of such loss or damage arising) is excluded. This will not operate to limit or restrict the Group's liability for death or personal injury resulting from its negligence. Multicomp Pro is the registered trademark of Premier Farnell Limited 2019.