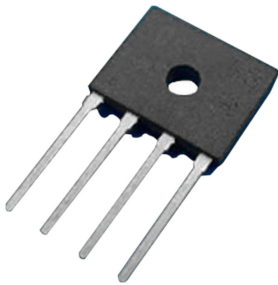


Glass Passivated Bridge Rectifier

multicomp^{PRO}



Features

- Glass passivated chip junction
- High case dielectric strength
- High surge current capability, ideal for printed circuit board

Mechanical Data

Terminal	: Plated leads solderable per MIL-STD 202E, Method 208C
Case	: UL-94 Class V-0 recognized Flame Retardant Epoxy
Polarity	: Polarity symbol marked on body
Mounting position	: Any
Reverse Voltage	: 600 Volts
Forward Current	: 6 Amperes

Maximum Ratings And Electrical Characteristics

Rating at 25°C ambient temperature unless otherwise specified.

Single phase, half wave, 60Hz, resistive or inductive load.

For capacitive load, derate current by 20%

Characteristic	Symbol	Values	Unit	
Maximum Recurrent Peak Reverse Voltage	V_{RRM}	600	V	
Maximum RMS Voltage	V_{RMS}	420		
Maximum DC Blocking Voltage	V_{DC}	600		
Maximum Average Forward Rectified Output Current @ $T_c = 140^\circ\text{C}$ (with heatsink)	$I_{(AV)}$	6	A	
Peak Forward Surge Current 8.3ms Single Half Sine-Wave Super Imposed on Rated Load (JEDEC Method)	I_{FSM}	170		
Maximum Forward Voltage at 3A DC	V_F	0.89	V	
Maximum Forward Voltage at 3A DC		0.9		
I^2t Rating for Fusing ($t < 8.3\text{ms}$)	I^2t	93	A^2s	
Typical Thermal Resistance	without heatsink	$R_{\theta JA}$	55	$^\circ\text{C}/\text{W}$
	with heatsink	$R_{\theta JC}$	2.5	
	without heatsink	$R_{\theta JL}$	15	
Maximum DC Reverse Current at Rated DC Blocking Voltage	@ $T_A = 25^\circ\text{C}$	I_R	10	μA
	@ $T_A = 125^\circ\text{C}$		500	
Operating Temperature Range	T_J	-55 to +150	$^\circ\text{C}$	
Storage Temperature Range	T_{STG}			

Glass Passivated Bridge Rectifier

Rating and Characteristic Curves

FIG.1-DERATING CURVE OUTPUT RECTIFIED CURRENT

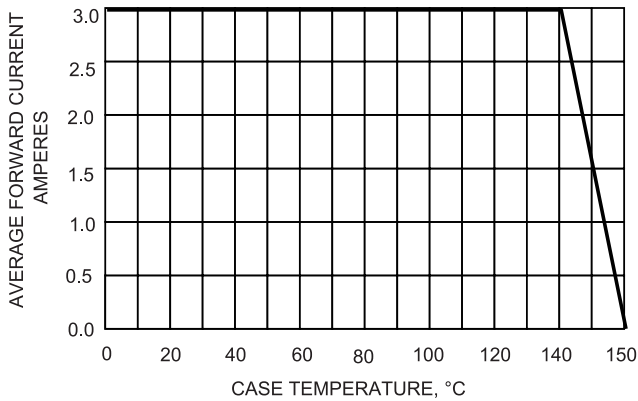


FIG.2-MAXIMUM NON-REPETITIVE SURGE CURRENT

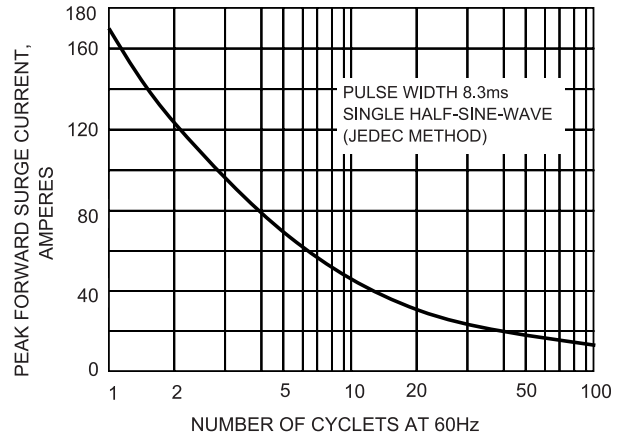


FIG.3-TYPICAL FORWARD CHARACTERISTICS

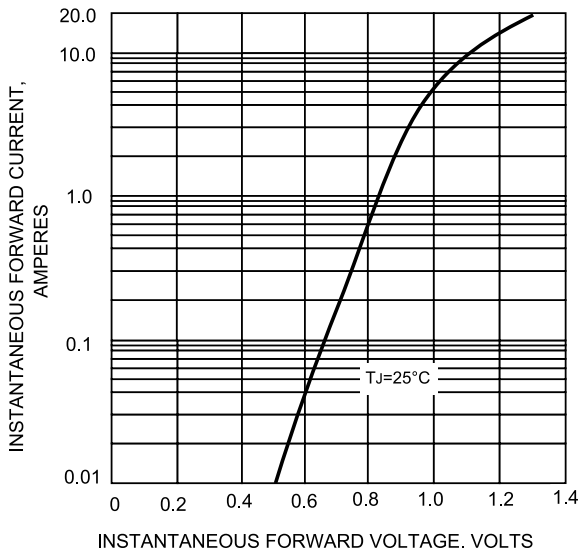
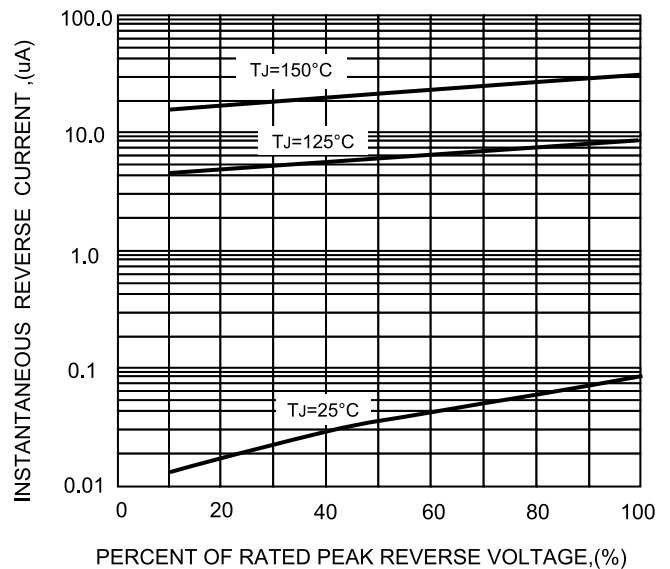


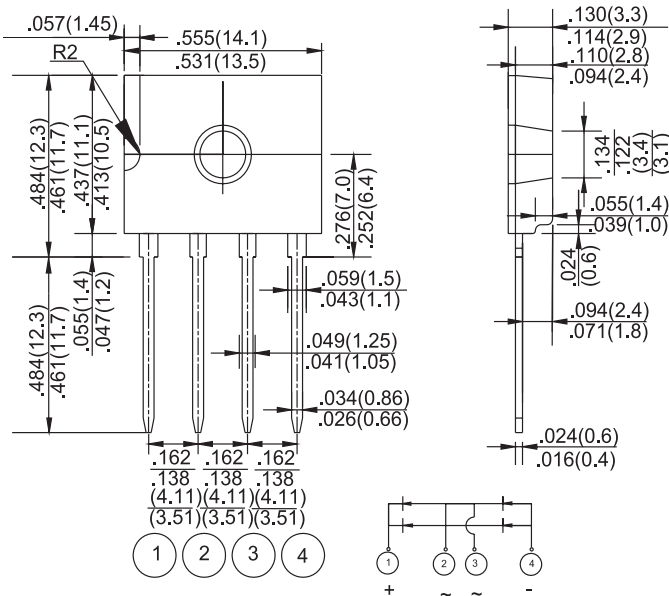
FIG.5-TYPICAL REVERSE CHARACTERISTICS



Glass Passivated Bridge Rectifier

Dimension:

D3K



Dimensions : Inches (Millimetres)

Part Number Table

Description	Part Number
Glass Passivated Bridge Rectifier	D6KB6U

Important Notice : This data sheet and its contents (the "Information") belong to the members of the AVNET group of companies (the "Group") or are licensed to it. No licence is granted for the use of it other than for information purposes in connection with the products to which it relates. No licence of any intellectual property rights is granted. The Information is subject to change without notice and replaces all data sheets previously supplied. The Information supplied is believed to be accurate but the Group assumes no responsibility for its accuracy or completeness, any error in or omission from it or for any use made of it. Users of this data sheet should check for themselves the Information and the suitability of the products for their purpose and not make any assumptions based on information included or omitted. Liability for loss or damage resulting from any reliance on the Information or use of it (including liability resulting from negligence or where the Group was aware of the possibility of such loss or damage arising) is excluded. This will not operate to limit or restrict the Group's liability for death or personal injury resulting from its negligence. Multicomp Pro is the registered trademark of Premier Farnell Limited 2019.

Newark.com/multicomp-pro
 Farnell.com/multicomp-pro
 Element14.com/multicomp-pro