



## Product Change Notification - KSRA-23LPHB699

---

**Date:**

02 Aug 2019

**Product Category:**

8-bit Microcontrollers; 16-Bit - Microcontrollers and Digital Signal Controllers; 32-bit Microcontrollers

**Affected CPNs:****Notification subject:**

CCB 3845 and 3845.001 Final Notice: Implement new packing material (non-bakeable tray) for selected products available in 100L and 64L TQFP (14x14x1mm) packages at MMT assembly site

**Notification text:****PCN Status:**

Final notification

**PCN Type:**

Manufacturing Change

**Microchip Parts Affected:**

Please open one of the icons found in the Affected CPNs section above.

NOTE: For your convenience Microchip includes identical files in two formats (.pdf and .xls).

**Description of Change:**

Implement new packing material (non-bakeable tray) for selected Atmel products available in 100L and 64L TQFP (14x14x1mm) packages at MMT assembly site

**Pre Change:**

Use of bakeable tray packing material in MSL 3 requirements

**Post Change:**

Use of non-bakeable tray packing material in MSL 1 requirements

**Pre and Post Change Summary:**

	Pre Change	Post Change
<b>Assembly Site</b>	Microchip Technology Thailand (Branch) / MMT	Microchip Technology Thailand (Branch) / MMT
<b>MSL Packing Requirements</b>	MSL 3	MSL 1
<b>Base Quantity Multiple (BQM) Minimum order quantity</b>	90units/tray	90units/tray
<b>Assembly Shipping Media</b>	Bakeable Tray	Non-Bakeable Tray
<b>Tray Color</b>	Black	Blue
<b>Tray Dimension (LxWxH)</b>	322.6x135.9x 20.30 mm	322.6x135.9x 20.30 mm
<b>Tray Photos</b>	See Pre and Post Change attachment for the photo	

**Impacts to Data Sheet:**

None

**Change Impact:**

None

**Reason for Change:**

To improve manufacturability and qualify new packing material (non-bakeable tray) in MSL 1 requirements

**Change Implementation Status:**

In Progress



**Estimated First Ship Date:**

September 02, 2019 (date code: 1936)

NOTE: Please be advised that after the estimated first ship date customers may receive pre and post change parts.

**Time Table Summary:**

	July 2019					July 2019			
Workweek	31	32	33	34	35	36	37	38	39
Qual Report Availability	X								
Final PCN Issue Date	X								
Estimated Implementation Date						X			

**Method to Identify Change:**

Traceability code and packing material

**Qualification Report:**

Please open the attachments included with this PCN labeled as PCN\_#\_Qual\_Report.

**Revision History:**

**August 02, 2019:** Issued final notification. Attached the Qualification Report. Provided estimated first ship date to be on September 02, 2019.

The change described in this PCN does not alter Microchip's current regulatory compliance regarding the material content of the applicable products.

**Attachment(s):**

[PCN\\_KSRA-23LPHB699\\_Pre\\_and\\_Post\\_Change\\_Summary.pdf](#)

[PCN\\_KSRA-23LPHB699\\_Qual\\_Report.pdf](#)

Please contact your local [Microchip sales office](#) with questions or concerns regarding this notification.

**Terms and Conditions:**

If you wish to [receive Microchip PCNs via email](#) please register for our PCN email service at our [PCN home page](#) select register then fill in the required fields. You will find instructions about registering for Microchips PCN email service in the [PCN FAQ](#) section.

If you wish to [change your PCN profile, including opt out](#), please go to the [PCN home page](#) select login and sign into your myMicrochip account. Select a profile option from the left navigation bar and make the applicable selections.

Affected Catalog Part Numbers (CPN)

PIC32MX664F064LT-I/PF  
PIC32MX764F128LT-I/PF  
PIC24FJ64GA310-I/PF  
PIC24FJ128GA310-I/PF  
PIC18F95J94-I/PF  
PIC18F96J94-I/PF  
PIC18F97J94-I/PF  
PIC18F95J94T-I/PF  
PIC18F96J94T-I/PF  
PIC18F97J94T-I/PF  
PIC32MX330F064L-I/PF  
PIC32MX430F064L-I/PF  
PIC32MX330F064L-V/PF  
PIC32MX430F064L-V/PF  
PIC32MX330F064LT-V/PF  
PIC32MX430F064LT-V/PF  
PIC32MX330F064LT-I/PF  
PIC32MX430F064LT-I/PF  
PIC32MX350F256L-I/PF  
PIC32MX350F128L-I/PF  
PIC32MX450F256L-I/PF  
PIC32MX450F128L-I/PF  
PIC32MX350F256L-V/PF  
PIC32MX350F128L-V/PF  
PIC32MX450F256L-V/PF  
PIC32MX450F128L-V/PF  
PIC32MX350F256LT-V/PF  
PIC32MX350F128LT-V/PF  
PIC32MX450F256LT-V/PF  
PIC32MX450F128LT-V/PF  
PIC32MX350F256LT-I/PF  
PIC32MX350F128LT-I/PF  
PIC32MX450F256LT-I/PF  
PIC32MX450F128LT-I/PF  
PIC32MX450F256L-120/PF  
PIC32MX450F256LT-120/PF  
PIC32MX370F512L-I/PF  
PIC32MX470F512L-I/PF  
PIC32MX370F512L-V/PF  
PIC32MX470F512L-V/PF  
PIC32MX370F512LT-V/PF  
PIC32MX470F512LT-V/PF  
PIC32MX370F512LT-I/PF  
PIC32MX470F512LT-I/PF  
PIC32MX470F512L-120/PF  
PIC32MX470F512LT-120/PF

PIC32MX150F256L-I/PF  
PIC32MX170F512L-I/PF  
PIC32MX130F128L-I/PF  
PIC32MX250F256L-I/PF  
PIC32MX230F128L-I/PF  
PIC32MX270F512L-I/PF  
PIC32MX550F256L-I/PF  
PIC32MX530F128L-I/PF  
PIC32MX570F512L-I/PF  
PIC32MX150F256L-V/PF  
PIC32MX170F512L-V/PF  
PIC32MX130F128L-V/PF  
PIC32MX250F256L-V/PF  
PIC32MX230F128L-V/PF  
PIC32MX270F512L-V/PF  
PIC32MX550F256L-V/PF  
PIC32MX530F128L-V/PF  
PIC32MX570F512L-V/PF  
PIC32MX150F256LT-V/PF  
PIC32MX170F512LT-V/PF  
PIC32MX130F128LT-V/PF  
PIC32MX250F256LT-V/PF  
PIC32MX230F128LT-V/PF  
PIC32MX270F512LT-V/PF  
PIC32MX550F256LT-V/PF  
PIC32MX530F128LT-V/PF  
PIC32MX570F512LT-V/PF  
PIC32MX150F256LT-I/PF  
PIC32MX170F512LT-I/PF  
PIC32MX130F128LT-I/PF  
PIC32MX250F256LT-I/PF  
PIC32MX230F128LT-I/PF  
PIC32MX270F512LT-I/PF  
PIC32MX550F256LT-I/PF  
PIC32MX530F128LT-I/PF  
PIC32MX570F512LT-I/PF  
PIC32MX150F256L-50I/PF  
PIC32MX170F512L-50I/PF  
PIC32MX130F128L-50I/PF  
PIC32MX250F256L-50I/PF  
PIC32MX230F128L-50I/PF  
PIC32MX270F512L-50I/PF  
PIC32MX550F256L-50I/PF  
PIC32MX530F128L-50I/PF  
PIC32MX570F512L-50I/PF  
PIC32MX150F256LT-50I/PF  
PIC32MX170F512LT-50I/PF  
PIC32MX130F128LT-50I/PF  
PIC32MX250F256LT-50I/PF

PIC32MX230F128LT-50I/PF  
PIC32MX270F512LT-50I/PF  
PIC32MX550F256LT-50I/PF  
PIC32MX530F128LT-50I/PF  
PIC32MX570F512LT-50I/PF  
PIC24FJ128GA010-I/PF  
PIC24FJ96GA010-I/PF  
PIC24FJ64GA010-I/PF  
PIC24FJ64GA010T-I/PF  
DSPIC33FJ64GS610-E/PF  
DSPIC33FJ32GS610-E/PF  
DSPIC33FJ64GS610-I/PF  
DSPIC33FJ32GS610-I/PF  
DSPIC33FJ64GS610T-I/PF  
DSPIC33FJ64GS610T-E/PF  
DSPIC33FJ64GS610-50I/PF  
DSPIC33FJ32GS610-50I/PF  
DSPIC33FJ64GS610T-50I/PF  
DSPIC33FJ32GS610T-50I/PF  
PIC32MZ1024ECG100-I/PF  
PIC32MZ2048ECG100-I/PF  
PIC32MZ1024ECH100-I/PF  
PIC32MZ2048ECH100-I/PF  
PIC32MZ1024ECM100-I/PF  
PIC32MZ2048ECM100-I/PF  
PIC32MZ1024ECG100T-I/PF  
PIC32MZ2048ECG100T-I/PF  
PIC32MZ1024ECH100T-I/PF  
PIC32MZ2048ECH100T-I/PF  
PIC32MZ1024ECM100T-I/PF  
PIC32MZ2048ECM100T-I/PF  
PIC32MZ0512EFE100-E/PF  
PIC32MZ0512EFF100-E/PF  
PIC32MZ0512EFK100-E/PF  
PIC32MZ1024EFE100-E/PF  
PIC32MZ1024EFF100-E/PF  
PIC32MZ1024EFG100-E/PF  
PIC32MZ1024EFH100-E/PF  
PIC32MZ1024EFK100-E/PF  
PIC32MZ1024EFM100-E/PF  
PIC32MZ2048EFG100-E/PF  
PIC32MZ2048EFH100-E/PF  
PIC32MZ2048EFM100-E/PF  
PIC32MZ0512EFE100-I/PF  
PIC32MZ0512EFF100-I/PF  
PIC32MZ2048EFH100-250I/PF  
PIC32MZ0512EFK100-I/PF  
PIC32MZ1024EFE100-I/PF  
PIC32MZ1024EFF100-I/PF

PIC32MZ1024EFG100-I/PF  
PIC32MZ1024EFH100-I/PF  
PIC32MZ1024EFK100-I/PF  
PIC32MZ1024EFM100-I/PF  
PIC32MZ2048EFG100-I/PF21  
PIC32MZ2048EFG100-I/PF  
PIC32MZ2048EFH100-I/PFM21  
PIC32MZ2048EFH100-I/PF  
PIC32MZ2048EFM100-I/PF  
PIC32MZ0512EFE100T-I/PF  
PIC32MZ0512EFF100T-I/PF  
PIC32MZ2048EFH100T-250I/PF  
PIC32MZ0512EFK100T-I/PF  
PIC32MZ1024EFE100T-I/PF  
PIC32MZ1024EFF100T-I/PF  
PIC32MZ1024EFG100T-I/PF  
PIC32MZ1024EFH100T-I/PF  
PIC32MZ1024EFK100T-I/PF  
PIC32MZ1024EFM100T-I/PF  
PIC32MZ2048EFG100T-I/PF21  
PIC32MZ2048EFG100T-I/PF  
PIC32MZ2048EFH100T-I/PF  
PIC32MZ2048EFM100T-I/PF  
PIC32MZ0512EFE100T-E/PF  
PIC32MZ0512EFF100T-E/PF  
PIC32MZ0512EFK100T-E/PF  
PIC32MZ1024EFE100T-E/PF  
PIC32MZ1024EFF100T-E/PF  
PIC32MZ1024EFG100T-E/PF  
PIC32MZ1024EFH100T-E/PF  
PIC32MZ1024EFK100T-E/PF  
PIC32MZ1024EFM100T-E/PF  
PIC32MZ2048EFG100T-E/PF  
PIC32MZ2048EFH100T-E/PF  
PIC32MZ2048EFM100T-E/PF  
PIC24HJ64GP210-I/PF  
PIC24HJ64GP510-I/PF  
PIC24HJ128GP210-I/PF  
PIC24HJ128GP310-I/PF  
PIC24HJ128GP510-I/PF  
PIC24HJ256GP210-I/PF  
PIC24HJ256GP610-I/PF  
DSPIC33FJ256GP710-I/PFB21  
DSPIC33FJ64GP310-I/PF  
DSPIC33FJ64GP710-I/PF  
DSPIC33FJ128GP310-I/PF  
DSPIC33FJ128GP710-I/PF  
DSPIC33FJ256GP510-I/PF  
DSPIC33FJ256GP710-I/PF

DSPIC33FJ64MC710-I/PF  
DSPIC33FJ128MC510-I/PF  
DSPIC33FJ128MC710-I/PF  
DSPIC33FJ256MC510-I/PF  
DSPIC33FJ256MC710-I/PF  
PIC24HJ256GP210T-I/PF  
PIC24HJ256GP610T-I/PF  
DSPIC33FJ256GP710T-I/PF  
DSPIC33FJ256MC710T-I/PF  
PIC18F97J60-I/PF  
PIC18F97J60-I/PFREL  
PIC18F97J60T-I/PF  
PIC18F96J65-I/PF  
PIC18F96J60-I/PF  
PIC24HJ64GP210A-E/PF  
PIC24HJ64GP510A-E/PF  
PIC24HJ128GP210A-E/PF  
PIC24HJ128GP310A-E/PF  
PIC24HJ128GP510A-E/PF  
DSPIC33FJ64GP310A-E/PF  
DSPIC33FJ64GP710A-E/PF  
DSPIC33FJ128GP310A-E/PF  
DSPIC33FJ128GP710A-E/PF  
DSPIC33FJ64MC510A-E/PF  
DSPIC33FJ64MC710A-E/PF  
DSPIC33FJ128MC510A-E/PF  
DSPIC33FJ128MC710A-E/PF  
PIC24HJ64GP210A-I/PF  
PIC24HJ64GP510A-I/PF  
PIC24HJ128GP210A-I/PF  
PIC24HJ128GP310A-I/PF  
PIC24HJ128GP510A-I/PF  
DSPIC33FJ64GP310A-I/PF  
DSPIC33FJ64GP710A-I/PF  
DSPIC33FJ128GP310A-I/PF  
DSPIC33FJ128GP710A-I/PF  
DSPIC33FJ64MC510A-I/PF  
DSPIC33FJ64MC710A-I/PF  
DSPIC33FJ128MC510A-I/PF  
DSPIC33FJ128MC710A-I/PF  
PIC24HJ128GP510A-H/PF  
DSPIC33FJ128MC710A-H/PF  
PIC24HJ64GP510AT-I/PF  
PIC24HJ128GP510AT-I/PF  
DSPIC33FJ128MC710AT-I/PF  
PIC24FJ128GA110-E/PF  
PIC24FJ256GA110-E/PF  
PIC24FJ64GA110-I/PF  
PIC24FJ128GA110-I/PF

PIC24FJ256GA110-I/PFC10  
PIC24FJ192GA110-I/PF  
PIC24FJ256GA110-I/PF  
PIC24FJ64GB110-I/PF  
PIC24FJ128GB110-I/PF  
PIC24FJ192GB110-I/PF  
PIC24FJ256GB110-I/PF  
PIC24FJ256GB110-I/PFREL  
PIC24FJ256GB110T-I/PF  
PIC24HJ256GP210A-E/PF  
PIC24HJ256GP610A-E/PF  
DSPIC33FJ256GP510A-E/PF  
DSPIC33FJ256GP710A-E/PF  
DSPIC33FJ256MC510A-E/PF  
DSPIC33FJ256MC710A-E/PF  
PIC24HJ256GP210A-I/PF  
PIC24HJ256GP610A-I/PF  
DSPIC33FJ256GP510A-I/PF  
DSPIC33FJ256GP710A-I/PF  
DSPIC33FJ256MC510A-I/PF  
DSPIC33FJ256MC710A-I/PF  
PIC24HJ256GP610A-H/PF  
DSPIC33FJ256MC710A-H/PF  
DSPIC33FJ256GP710A-H/PF  
PIC24HJ256GP610AT-I/PF  
DSPIC33FJ256GP710AT-I/PF  
DSPIC33FJ256MC710AT-I/PF  
ATMEGA128A-AUA2  
ATMEGA128L-8AU  
ATMEGA128A-AU  
ATMEGA128-16AU  
ATMEGA128A-AU-HCM  
ATMEGA128-16AN  
ATMEGA128A-AN  
ATMEGA128-16ANR  
ATMEGA128L-8ANR  
ATMEGA128A-ANR  
ATMEGA128A-AUR  
ATMEGA128L-8AUR  
ATMEGA128L-8AURA6  
ATMEGA128-16AURA0  
ATMEGA128-16AUR  
ATMEGA64A-AU  
ATMEGA64-16AU  
ATMEGA64L-8AU  
ATMEGA64-16AUA0  
ATMEGA64A-AN  
ATMEGA64A-ANR  
ATMEGA64A-AUR



ATMEGA64-16AUR  
ATMEGA64L-8AUR  
ATMEGA64-16AURA0  
ATMEGA645P-AU  
ATMEGA649A-AU  
ATMEGA645A-AU  
ATMEGA649P-AU  
ATMEGA649A-AUR  
ATMEGA645A-AUR  
ATMEGA645P-AUR  
ATMEGA649P-AUR  
ATMEGA329PA-AU  
ATMEGA325A-AU  
ATMEGA325PA-AU  
ATMEGA329A-AU  
ATMEGA325A-AN  
ATMEGA325A-ANR  
ATMEGA325PA-AUR  
ATMEGA329A-AUR  
ATMEGA329PA-AUR  
ATMEGA325A-AUR  
ATMEGA165PA-AU  
ATMEGA169A-AU  
ATMEGA169PA-AU  
ATMEGA165A-AU  
ATMEGA169PA-AN  
ATMEGA169PA-ANR  
ATMEGA165PA-AUR  
ATMEGA165A-AUR  
ATMEGA169A-AUR  
ATMEGA169PA-AUR  
ATHON169A-AUR  
ATMEGA329V-8AU  
ATMEGA329-16AU  
ATMEGA325V-8AU  
ATMEGA325-16AU  
ATMEGA329V-8AUR  
ATMEGA325V-8AUR  
ATMEGA325-16AUR  
ATMEGA329-16AUR  
ATMEGA128L-8AUA4  
ATMEGA128-16AUA4  
ATMEGA128L-8AN  
ATMEGA128L-8AURA5  
ATMEGA128L-8AURA3  
ATMEGA128-16AURA3  
ATMEGA649V-8AU  
ATMEGA645-16AU  
ATMEGA649-16AU

ATMEGA645V-8AU  
ATMEGA649-16AUR  
ATMEGA645V-8AUR  
ATMEGA649V-8AUR  
ATMEGA645-16AUR  
ATMEGA2561V-8AU  
ATMEGA2561-16AU  
ATMEGA2561V-8AUR  
ATMEGA2561-16AUR  
ATMEGA169PV-8AU  
ATMEGA169P-16AU  
ATMEGA165P-16AU  
ATMEGA165PV-8AU  
ATMEGA165P-16AN  
ATMEGA165PV-8AN  
ATMEGA165PV-8ANR  
ATMEGA165P-16ANR  
ATMEGA169PV-8AUR  
ATMEGA169P-16AUR  
ATMEGA165P-16AUR  
ATMEGA165PV-8AUR  
ATMEGA169PV-8AURA3  
ATMEGA325PV-10AU  
ATMEGA329P-20AU  
ATMEGA329PV-10AU  
ATMEGA325P-20AU  
ATMEGA329P-20ANR  
ATMEGA329P-16AUR  
ATMEGA325PV-10AURA1  
ATMEGA325PV-10AUR  
ATMEGA329P-20AUR  
ATMEGA329PV-10AUR  
ATMEGA329PV-10AURA0  
ATMEGA325P-20AUR  
ATMEGA325P-20AURA0  
ATMEGA64L-8AUA2  
ATMEGA64L-8AUA4  
ATMEGA64-16AUA2  
ATMEGA64L-8AQ  
ATMEGA64L-8AQR  
ATMEGA64L-8AQRA1  
ATMEGA64L-8AURA1  
ATMEGA64L-8AURA3  
ATMEGA64-16AURA1  
ATMEGA1281-16AU  
ATMEGA1281V-8AU  
ATMEGA1281V-8AUR  
ATMEGA1281-16AUR  
ATMEGA2561-16AUA0

ATMEGA2561V-8AUA0  
ATMEGA2561-16AURA0  
ATMEGA2561V-8AURA0  
AT90USB1287-AU  
AT90USB1286-AU  
AT90USB1286-AUR  
AT90USB1287-AUR  
AT90CAN32-16AU  
AT90CAN32-16AUR  
AT90CAN64-16AU  
AT90CAN64-16AUR  
AT90USB647-AU  
AT90USB646-AU  
AT90USB647-AUR  
AT90USB646-AUR  
AT90CAN128-16AU  
AT90CAN128-16AUR  
ATXMEGA256A3-AU  
ATXMEGA256D3-AU  
ATXMEGA64D3-AUA1  
ATXMEGA128D3-AU  
ATXMEGA192A3-AU  
ATXMEGA64A3-AU  
ATXMEGA128A3-AU  
ATXMEGA64D3-AUA3  
ATXMEGA192A3-AUR  
ATXMEGA256D3-AUR  
ATXMEGA64D3-AUR  
ATXMEGA64A3-AURA0  
ATXMEGA256D3-AURA2  
ATXMEGA64D3-AURA3  
ATXMEGA256A3-AUR  
ATXMEGA64A3-AUR  
ATXMEGA64D3-AURA0  
ATXMEGA128A3-AUR  
ATXMEGA128A3U-AU  
ATXMEGA64A3U-AU  
ATXMEGA192A3U-AU  
ATXMEGA256A3BU-AU  
ATXMEGA256A3U-AU  
ATXMEGA192D3-AUA0  
ATXMEGA256D3-AUA1  
ATXMEGA128D3-AUA0  
ATXMEGA64D3-AUA2  
ATXMEGA256A3U6L-AU  
ATXMEGA192A3U-AN  
ATXMEGA256A3U-AN  
ATXMEGA192A3U-ANR  
ATXMEGA256A3U-ANR

ATXMEGA192A3U-AUR  
ATXMEGA192D3-AURA0  
ATXMEGA256A3BU-AUR  
ATXMEGA256D3-AURA1  
ATXMEGA64D3-AURA2  
ATXMEGA128A3U-AURA0  
ATXMEGA256A3U-AUR  
ATXMEGA128A3U-AUR  
ATXMEGA64A3U-AUR  
ATXMEGA64B3-AU  
ATXMEGA128B3-AU  
ATXMEGA128B3-AN  
ATXMEGA64B3-AN  
ATXMEGA128B3-ANR  
ATXMEGA64B3-ANR  
ATXMEGA64B3-AUR  
ATXMEGA128B3-AUR  
ATXMEGA192D3-AU  
ATXMEGA256C3-AU  
ATXMEGA192C3-AU  
ATXMEGA256D3-AUA3  
ATXMEGA256D3-AUA0  
ATXMEGA256C3-AUA0  
ATXMEGA192D3-AUR  
ATXMEGA256C3-AUR  
ATXMEGA192D3-AURA1  
ATXMEGA256D3-AURA3  
ATXMEGA256D3-AURA0  
ATXMEGA256C3-AURA0  
ATXMEGA192C3-AUR  
ATXMEGA384C3-AU  
ATXMEGA384D3-AU  
ATXMEGA384C3-AUR  
ATXMEGA128C3-AU  
ATXMEGA128D3-AUA1  
ATXMEGA128C3-AUR  
ATXMEGA128D3-AURA1  
ATXMEGA128D3-AUR  
ATXMEGA32C3-AU  
ATXMEGA64D3-AUA4  
ATXMEGA32D3-AUA0  
ATXMEGA64D3-AU  
ATXMEGA64C3-AU  
ATXMEGA32D3-AU  
ATXMEGA32C3-AN  
ATXMEGA32D3-AN  
ATXMEGA64C3-AN  
ATXMEGA64D3-AN  
ATXMEGA32C3-ANR

ATXMEGA32D3-ANR  
ATXMEGA64C3-ANR  
ATXMEGA64D3-ANR  
ATXMEGA64D3-AURA4  
ATXMEGA64C3-AUR  
ATXMEGA32C3-AUR  
ATXMEGA32D3-AUR  
ATXMEGA64D3-AURA6  
DSPIC30F6011A-20E/PF  
DSPIC30F6012A-20E/PF  
DSPIC30F6011A-30I/PF  
DSPIC30F6012A-30I/PF  
DSPIC33FJ64MC506A-E/PFC23  
DSPIC33FJ64MC506-I/PFC23  
DSPIC33FJ64MC506T-I/PFC23  
DSPIC33FJ64MC506AT-E/PFC23  
ATMEGA6450P-AU  
ATMEGA6450A-AU  
ATMEGA6490A-AU  
ATMEGA6490P-AU  
ATMEGA6450A-AUR  
ATMEGA6490A-AUR  
ATMEGA6490P-AUR  
ATMEGA6450P-AUR  
ATMEGA3250PA-AU  
ATMEGA3290A-AU  
ATMEGA3250A-AU  
ATMEGA3290PA-AU  
ATMEGA3250PA-AUR  
ATMEGA3290A-AUR  
ATMEGA3250A-AUR  
ATMEGA3290PA-AUR  
ATMEGA3250V-8AU  
ATMEGA3290V-8AU  
ATMEGA3250-16AU  
ATMEGA3290-16AU  
ATMEGA3250V-8AUR  
ATMEGA3250-16AUR  
ATMEGA3290-16AUR  
ATMEGA3290V-8AUR  
ATMEGA6490-16AU  
ATMEGA6490V-8AU  
ATMEGA6450V-8AU  
ATMEGA6450-16AU  
ATMEGA6450V-8AUR  
ATMEGA6450-16AUR  
ATMEGA6490-16AUR  
ATMEGA6490V-8AUR  
ATMEGA2560-16AU

ATMEGA2560V-8AU  
ATMEGA2560-16AUR  
ATMEGA3250PV-10AU  
ATMEGA3290P-20AU  
ATMEGA3250P-20AU  
ATMEGA3290PV-10AU  
ATMEGA3290PV-10AUA0  
ATMEGA3250PV-10AUR  
ATMEGA3290PV-10AUR  
ATMEGA3290P-20AUR  
ATMEGA3250P-20AUR  
ATMEGA1280-16AU  
ATMEGA1280V-8AU  
ATMEGA640V-8AU  
ATMEGA640-16AU  
ATMEGA1280-16AU-HCM  
ATMEGA1280-16AUR  
ATMEGA1280V-8AUR  
ATMEGA640V-8AUR  
ATMEGA640-16AUR  
ATMEGA640-16AURA0  
ATMEGA2560-16AUA0  
ATMEGA2560V-8AUA0  
ATMEGA2560-16AU-HCM  
ATMEGA2560-16AURA0  
ATMEGA2560V-8AURA0  
ATMEGA2560V-8AUR  
ATXMEGA64A1-AU  
ATXMEGA128A1-AU  
ATXMEGA64A1-AUR  
ATXMEGA128A1-AUR  
ATXMEGA128A1U-AU  
ATXMEGA64A1U-AU  
ATXMEGA128A1U-AN  
ATXMEGA128A1U-ANR  
ATXMEGA128A1U-AUR  
ATXMEGA64A1U-AUR  
ATXMEGA128B1-AU  
ATXMEGA64B1-AU  
ATXMEGA64B1-AUA0  
ATXMEGA128B1-ANR  
ATXMEGA64B1-ANR  
ATXMEGA128B1-AURA0  
ATXMEGA128B1-AUR  
ATXMEGA64B1-AUR  
AT32UC3A1512-AUR  
AT32UC3A1512-AUT  
AT32UC3A1128-AUT  
AT32UC3A1256-AUT

AT32UC3A1128-AUR  
AT32UC3A1256-AUR  
AT32UC3C1128C-AUT  
AT32UC3C1256C-AUT  
AT32UC3C1512C-AUT  
AT32UC3C164C-AUT  
AT32UC3C1128C-AUR  
AT32UC3C1256C-AUR  
AT32UC3C1512C-AUR  
AT32UC3C164C-AUR  
AT32UC3C1256C-AURA0  
ATSAM4LC4CA-AU  
ATSAM4LS4CA-AU  
ATSAM4LC2CA-AU  
ATSAM4LS2CA-AU  
ATSAM4LC4CA-AUR  
ATSAM4LS4CA-AUR  
ATSAM4LC2CA-AUR  
ATSAM4LS2CA-AUR  
ATSAM4LC8CA-AU  
ATSAM4LS8CA-AU  
ATSAM4LC8CA-AUR  
ATSAM4LS8CA-AUR  
PIC16F1939-ME2/PF  
PIC16F1789-ME2/PF  
PIC16F1829-ME2/PF  
PIC16F1719-ME2/PF  
PIC16F1619-ME2/PF  
DSPIC33EP256MU810-E/PF  
DSPIC33EP512MU810-E/PF  
PIC24EP256GU810-E/PF  
PIC24EP512GU810-E/PF  
DSPIC33EP512MU810-I/PFC04  
DSPIC33EP256MU810-I/PF  
DSPIC33EP512MU810-I/PF  
PIC24EP256GU810-I/PF  
PIC24EP512GU810-I/PF  
DSPIC33EP256MU810T-I/PF  
DSPIC33EP512MU810T-I/PF  
PIC24EP256GU810T-I/PF  
PIC24EP512GU810T-I/PF  
DSPIC33EP256MU810T-E/PF  
DSPIC33EP512MU810T-E/PF  
PIC24EP256GU810T-E/PF  
PIC24EP512GU810T-E/PF  
PIC32MX575F512L-80I/PF  
PIC32MX575F256L-80I/PF  
PIC32MX695F512L-80I/PF  
PIC32MX675F512L-80I/PF

PIC32MX675F256L-80I/PF  
PIC32MX795F512L-80I/PFE21  
PIC32MX795F512L-80I/PF  
PIC32MX775F512L-80I/PF  
PIC32MX775F256L-80I/PF  
PIC32MX575F512L-80V/PF  
PIC32MX575F256L-80V/PF  
PIC32MX695F512L-80V/PF  
PIC32MX675F512L-80V/PF  
PIC32MX675F256L-80V/PF  
PIC32MX795F512L-80V/PF  
PIC32MX775F512L-80V/PF  
PIC32MX775F256L-80V/PF  
PIC32MX575F256LT-80V/PFC21  
PIC32MX575F512LT-80V/PF  
PIC32MX575F256LT-80V/PF  
PIC32MX695F512LT-80V/PF  
PIC32MX675F512LT-80V/PF  
PIC32MX675F256LT-80V/PF  
PIC32MX795F512LT-80V/PF  
PIC32MX775F512LT-80V/PF  
PIC32MX775F256LT-80V/PF  
PIC32MX575F512LT-80I/PF  
PIC32MX575F256LT-80I/PF  
PIC32MX695F512LT-80I/PF  
PIC32MX675F512LT-80I/PF  
PIC32MX675F256LT-80I/PF  
PIC32MX795F512LT-80I/PF  
PIC32MX775F512LT-80I/PF  
PIC32MX775F256LT-80I/PF  
DSPIC33EP128GM310-E/PF  
DSPIC33EP128GM710-E/PF  
DSPIC33EP256GM310-E/PF  
DSPIC33EP256GM710-E/PF  
DSPIC33EP512GM310-E/PF  
DSPIC33EP512GM710-E/PF  
DSPIC33EP128GM310-I/PF  
DSPIC33EP128GM710-I/PF  
DSPIC33EP256GM310-I/PF  
DSPIC33EP256GM710-I/PF  
DSPIC33EP512GM310-I/PF  
DSPIC33EP512GM710-I/PF  
DSPIC33EP128GM710T-I/PF  
DSPIC33EP512GM310T-I/PF  
PIC32MX564F128L-I/PF  
PIC32MX534F064L-I/PF  
PIC32MX564F064L-I/PF  
PIC32MX664F128L-I/PF  
PIC32MX664F064L-I/PF



PIC32MX764F128L-I/PF  
PIC32MX564F128L-V/PF  
PIC32MX534F064L-V/PF  
PIC32MX564F064L-V/PF  
PIC32MX664F128L-V/PF  
PIC32MX664F064L-V/PF  
PIC32MX764F128L-V/PF  
PIC32MX564F128LT-V/PF  
PIC32MX534F064LT-V/PF  
PIC32MX564F064LT-V/PF  
PIC32MX664F128LT-V/PF  
PIC32MX664F064LT-V/PF  
PIC32MX764F128LT-V/PF  
PIC32MX564F128LT-I/PF  
PIC32MX534F064LT-I/PF  
PIC32MX564F064LT-I/PF  
PIC32MX664F128LT-I/PF





**MICROCHIP**

**CCB 3845 and 3845.001 Final Notice:  
Implement new packing material (non-  
bakeable tray) for selected products available  
in 100L and 64L TQFP (14x14x1mm) packages  
at MMT assembly site**

***Pre and Post Change Summary***

# Pre and Post Change Summary:

	Pre Change	Post Change
Assembly Site	Microchip Technology Thailand (Branch) / MMT	Microchip Technology Thailand (Branch) / MMT
MSL Packing Requirements	MSL 3	MSL 1
Base Quantity Multiple (BQM) Minimum order quantity	90units/tray	90units/tray
Assembly Shipping Media	Bakeable Tray	Non-Bakeable Tray
Tray Color	Black	Blue
Tray Dimension (LxWxH)	322.6x135.9x 20.30 mm	322.6x135.9x 20.30 mm
Tray Photos	 <p>The image shows a black tray with a grid of 14x14 compartments. Below it are two close-up photos of the tray's edge. The top close-up shows the text '0T-003T-3 SHINON TQFP 14X14 t=1.0mm'. The bottom close-up shows '150°C MAX.'.</p>	 <p>The image shows a blue tray with a grid of 14x14 compartments. Below it are two close-up photos of the tray's edge. The top close-up shows 'UBOT TQFP1414'. The bottom close-up shows '75°C MAX. ABS UQ14141.00615YA'.</p>



**MICROCHIP**

**FUNCTIONAL TEST AND DROP TEST RESULT**

**PCN #: KSRA-23LPHB699**

**Date**  
**May 22,2019**

**Implement new packing material (non-bakeable tray) for selected products available in 100L TQFP (14x14x1mm) package at MMT assembly site. The selected products available 64L TQFP package will qualify by similarity (QBS).**

**Purpose** Implement new packing material (non-bakeable tray) for selected products available in 100L TQFP (14x14x1mm) package at MMT assembly site. The selected products available 64L TQFP package will qualify by similarity (QBS).

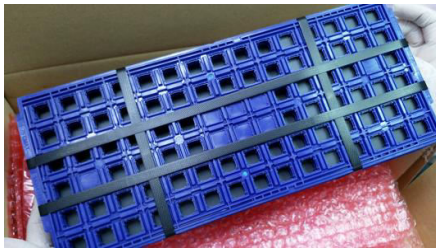
**CCB No** 3845 and 3845.001

**Functional Test and Drop Test**

**Drop Test Procedure:**

1. Visual inspection before test
2. Original package
3. Drop at height 1 m. 7 times
4. Visual inspection after tested

Stripping tray



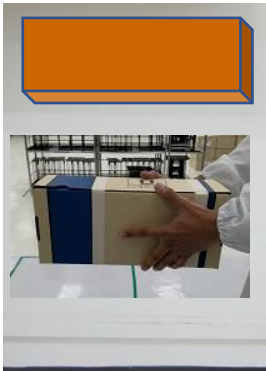
Rubber sheet (inbox)



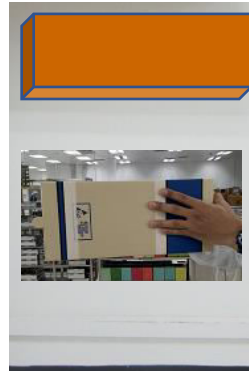
Completed package



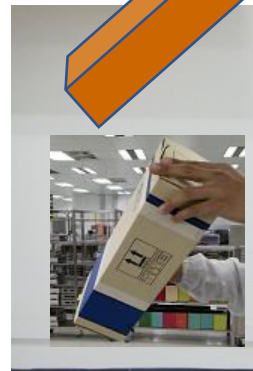
Side 6 bottom



Side 5



Side 2



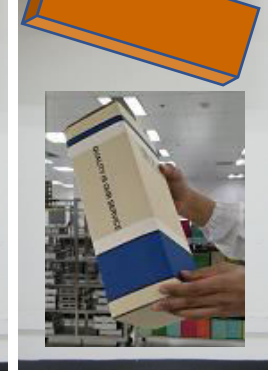
Corner side 2-4



Corner side 3-5



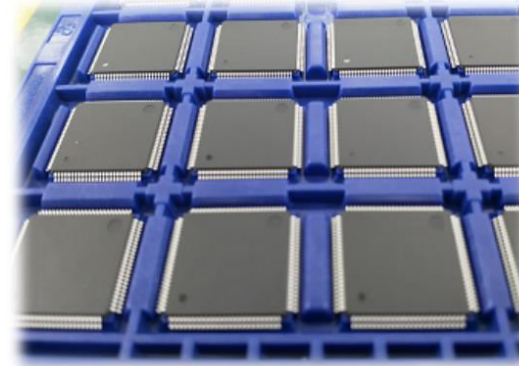
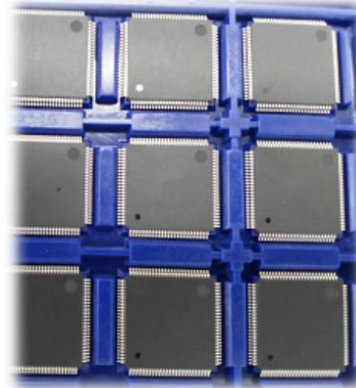
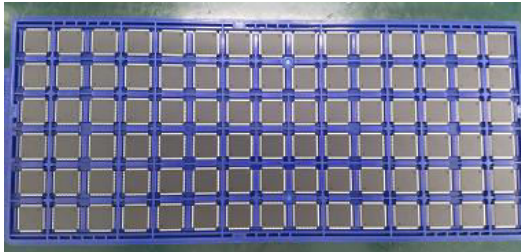
Side 4



Corner side 2-6

**Result of Drop Test :**

<b>Package</b>	<b>Drop height (m.)</b>	<b>Qty.</b>	<b>Result</b>
100 TQFP	1	10 tray / 900 units	Passed

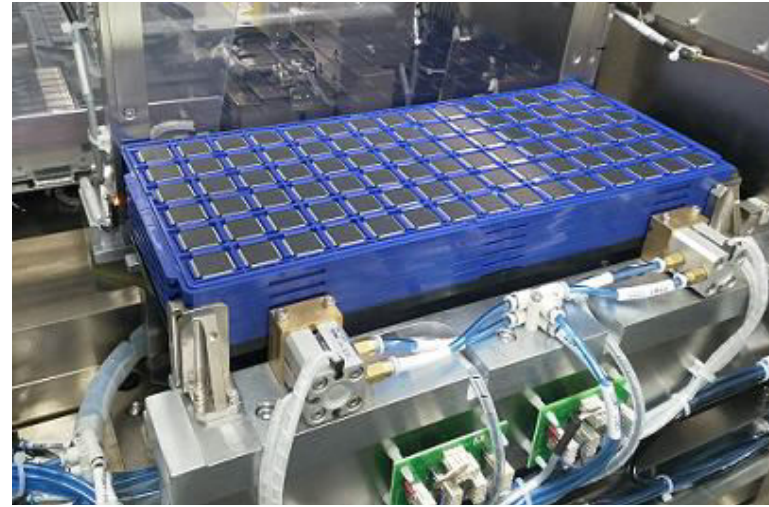


**Conclusion :**

- DROP TEST is Accept.
- Package have no defect.
- 100% Yield

**Functional Test :**

- *TRAY 100 TQFP 14X14 ,*
- *M/C # ASM model MPENIX*
- *Auto running 50 strips (1500 units)*



**Conclusion :**

- ❑ **FUNCTIONAL TEST is Accept**
- ❑ **Machine don't jam.**
- ❑ **100% yield, Have no defect**