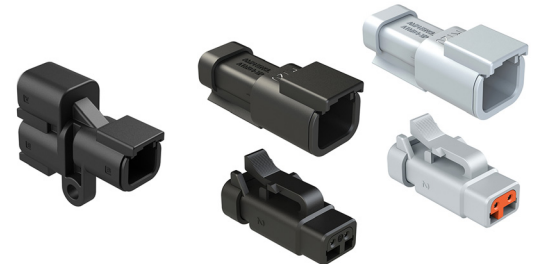




ATM ATM Series™ 2-Wire CAN



J1939/15 2-Wire CAN Connectors

Amphenol Sine Systems' **ATM Series™ 2-Wire CAN System** meets SAE J1939/15 requirements. Our 2 position connectors are offered in several options: 2 position "Y" receptacles, and 2 position keyed plugs/receptacles with end caps and molded-in 120Ω resistors for network terminations.

Applications: Heavy Equipment, Agriculture, Construction, Transportation, Off-Road, Mining, Industrial, Railway, Automotive, Diagnostics, Marine, Water Resistance, Harsh Environments



Technical Specifications

Temperature Range	-55°C - +125°C	Min. Mating Cycles	> 100
Max. Current (AMP)	7.5A	IP Rating	IP67 in mated condition
Voltage Rating (AC/DC)	250V	Wire Range	20-22AWG
Contact Resistance	< 15mΩ	Housing Body	Thermoplastic
Contacts	Copper Alloy, Gold Plating	Insulation Resistance	1000 megohms at 25°C
Contact Size	20	Dielectric Withstanding Voltage	Less than 2 mA current leakage @ 1500V AC

Part Number	Description	Amperage	Voltage	AWG
ATM04-2P-P007	ATM, 6 Position, 2-way Receptacle, Y Splitter (Contacts & Wedgelock Included)	7.5A	250	20-22
ATM04-2P-RA120GY	ATM, 2 Position, 2-Way Receptacle, A Key, 120 OHM Resistor, Gray (Contacts & Wedgelock Included)	7.5A	250	20-22
ATM04-2P-RB120BK	ATM, 2 Position, 2-Way Receptacle, B Key, 120 OHM Resistor, Black (Contacts & Wedgelock Included)	7.5A	250	20-22
ATM06-2S-R120GRY	ATM, 2 Position, 2-Way Plug, A Key, 120 OHM, 1/2W, Gray, Endcap (Contacts & Wedgelock Included)	7.5A	250	20-22
ATM06-2S-RB120BK	ATM, 2 Position, 2-Way Plug, B Key, 120 OHM Resistor, Black (Contacts & Wedgelock Included)	7.5A	250	20-22
AWM-2PA	ATM, 2 Position Pin Wedgelock, A Keyed	NA	NA	NA
AWM-2PB	ATM, 2 Position Pin Wedgelock, B Keyed	NA	NA	NA
AWM-2SA	ATM, 2 Position Socket Wedgelock, A Keyed	NA	NA	NA
AWM-2SB	ATM, 2 Position Socket Wedgelock, B Keyed	NA	NA	NA



Standard products. Custom solutions
Customer Service +1 800 394 7732

For more information, contact: Customer Service, +1 800 394 7732, csr@amphenol-sine.com

© 2019 Amphenol Sine Systems Corporation, 44274 Morley Drive, Clinton Township MI 48036 USA. www.amphenol-sine.com. Customer Service +1 800 394 7732
Every effort has been made to ensure that the information contained in this document is accurate at the time of publication. Specifications or information stated in this document are subject to change without notice. 08/2019