

(1.27 mm) .050"

HIGH-SPEED/HIGH-DENSITY OPEN-PIN-FIELD

SPECIFICATIONS

For complete specifications and recommended PCB layouts see www.samtec.com?SEAF

Insulator Material:
Black LCP

Contact Material:
Copper Alloy

Operating Temp Range:
-55 °C to +125 °C

Current Rating (7 mm stack height):
2.7 A per pin
(10 adjacent pins powered)

Plating:
Au or Sn over
50 μm (1.27 μm) Ni

Working Voltage:
240 VAC

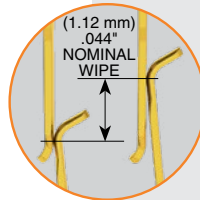
RoHS Compliant:
Yes

Lead-Free Solderable:
Yes

Board Mates:
SEAM, SEAMP,
SEAR, SEAMI

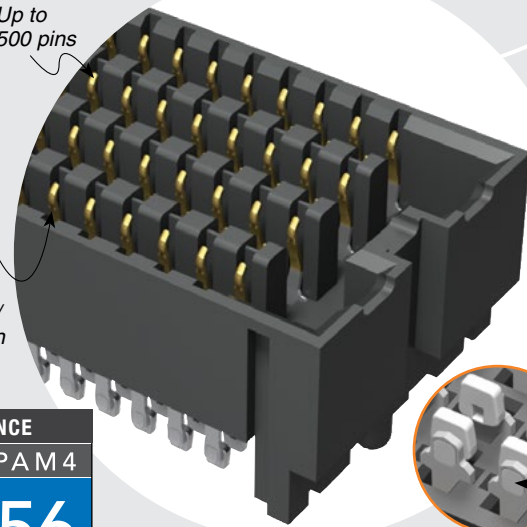
Cable Mates:
SEAC

Standoffs:
JSO



Up to 500 pins

Low insertion/extraction forces



Solder charges

HIGH-SPEED CHANNEL PERFORMANCE

SEAF/SEAM @ 10 mm Mated Stack Height
Rating based on Samtec reference channel.
For full SI performance data visit Samtec.com
or contact SIG@samtec.com

PAM 4

56 Gbps

RECOGNITIONS

For complete scope of recognitions see www.samtec.com/quality

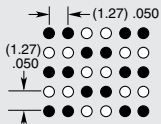


STANDARDS

- VITA 47
- VITA 57.1 FMC
- VITA 57.4 FMC+
- VITA 74 VNX
- PISMO™ 2

Visit www.samtec.com/standards for more information.

DIFFERENTIAL SIGNAL ROUTING



The above signal routing configuration allows for the use of 25 to 125 differential pair counts. Contact sig@samtec.com for specific details.

Notes:
Patented

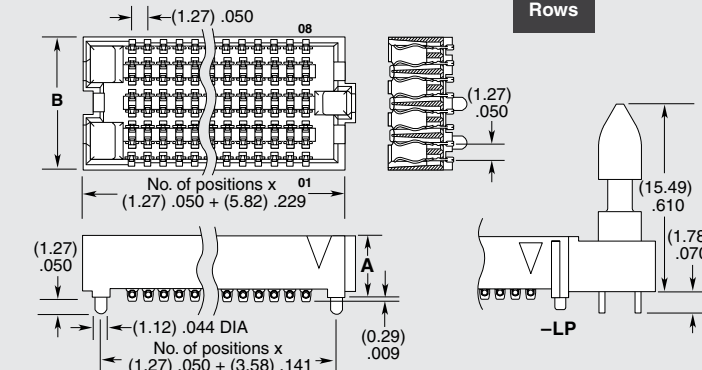
IPC-A-610F and IPC J-STD-001F Class 3 solder joint.

Some sizes, styles and options are non-standard, non-returnable.

SEAF	NO. PINS PER ROW	LEAD STYLE	PLATING OPTION	NO. OF ROWS	SOLDER TYPE	A	OPTION	K	TR
	-10, -15, -20, -30, -40, -50	Specify LEAD STYLE from chart	-L = 10 μm (0.25 μm) Gold on contact area, Matte Tin on solder tail -S = 30 μm (0.76 μm) Gold on contact area, Matte Tin on solder tail	-04 = Four Rows -05 = Five Rows -06 = Six Rows -08 = Eight Rows -10 = Ten Rows	-1 = Tin/Lead Alloy Solder Charge -2 = Lead-Free Solder Charge		-LP = Latch Post (-LP required for SEAC mate only) (Available with -05.0 lead style and -04, -06, -08 & -10 rows only)	-K = Polyimide film Pick & Place Pad (Not available with -10 and -15 pins with -LP Latch post)	

NO. OF ROWS	B
-04	(5.66) .223
-05, -06	(8.20) .323
-08	(10.74) .423
-10	(13.28) .523

LEAD STYLE	A
-05.0	(5.05) .199
-06.0	(6.05) .238
-06.5	(6.55) .258
-07.5	(7.54) .297

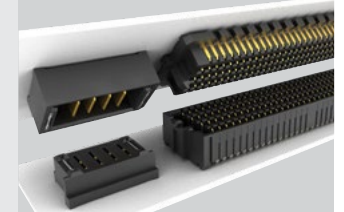


Due to technical progress, all designs, specifications and components are subject to change without notice.

WWW.SAMTEC.COM

All parts within this catalog are built to Samtec's specifications. Customer specific requirements must be approved by Samtec and identified in a Samtec customer-specific drawing to apply.

POWER/SIGNAL APPLICATION



Compatible with UMP/T/UMPS for flexible two-piece power/signal solutions