



19" desktop enclosures

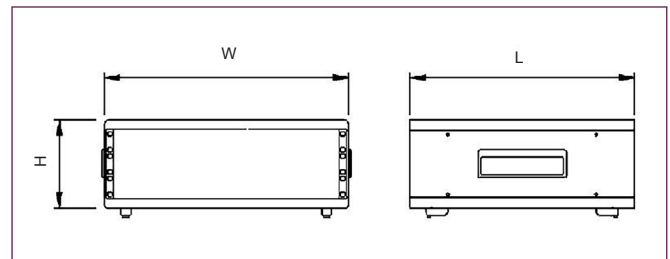
Product overview

Sturdy lightweight 19" enclosures designed to accept 'full-width' 84E subracks and standard 19" units.

- Heights from 2U up to 9U
- Constructed from 1mm steel
- Supplied with front tilt-feet, rear fixed feet
- Ventilation slots in base and rear panel
- Recessed side handles for comfort and easy transport
- Supplied flat-packed
- Open front design
- Front options ordered separately



| PART NO. | U | WIDTH | HEIGHT | LENGTH |
|-----------|----|-------|---------|--------|
| C19DE2330 | 2U | 489mm | 131.5mm | 330mm |
| C19DE2450 | 2U | 489mm | 131.5mm | 450mm |
| C19DE3330 | 3U | 489mm | 176mm | 330mm |
| C19DE3450 | 3U | 489mm | 176mm | 450mm |
| C19DE6330 | 6U | 489mm | 306mm | 330mm |
| C19DE6450 | 6U | 489mm | 306mm | 450mm |
| C19DE9450 | 9U | 489mm | 443mm | 450mm |



| SPECIFICATION | |
|------------------------|---|
| Materials | Shell 1mm thick steel Handles ABS Legs ABS |
| Standard colours | Shell: epoxy paint graphite grey Handles: black similar to RAL 9004 Legs: dark grey similar to RAL 7016 |
| Standard unit includes | Top and bases covers Two side panels One rear panel Four feet 19" mounting brackets Handles Mounting hardware |
| Options | 19" front panels |

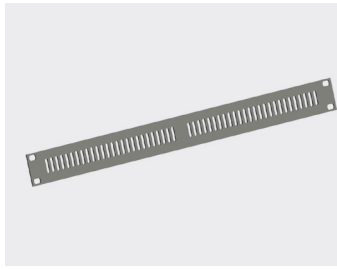
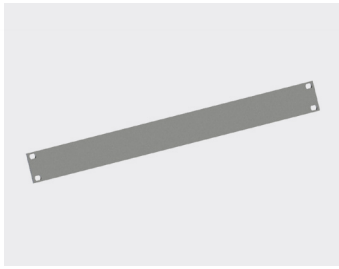
KEY FEATURES

Lightweight | Sturdy | Supplied flat-packed

ACCESSORIES

19" Aluminium front panel

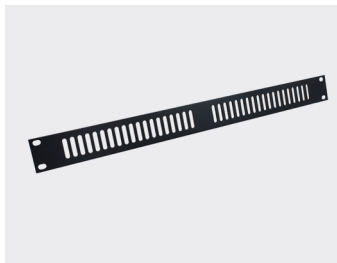
- 3mm thick aluminium, clear anodised



| STANDARD FRONT | VENTED FRONT | U | HEIGHT(MM) |
|----------------|--------------|----|------------|
| CAX19SPS1 | CAX19VPS1 | 1U | 43.6mm |
| CAX19SPS2 | CAX19VPS2 | 2U | 88.1mm |
| CAX19SPS3 | CAX19VPS3 | 3U | 132.5mm |
| CAX19SPS4 | CAX19VPS4 | 4U | 177.0mm |
| CAX19SPS5 | CAX19VPS5 | 5U | 221.5mm |
| CAX19SPS6 | CAX19VPS6 | 6U | 265.9mm |
| CAX19SPS9 | CAX19VPS9 | 9U | 399.2mm |

19" Steel front panel

- Manufactured in steel
- Powder coated (RAL 7016)



| STANDARD FRONT | VENTED FRONT | U | HEIGHT(MM) |
|----------------|--------------|----|------------|
| CAX19SPA1 | CAX19VPA1 | 1U | 43.6mm |
| CAX19SPA2 | CAX19VPA2 | 2U | 88.1mm |
| CAX19SPA3 | CAX19VPA3 | 3U | 132.5mm |
| CAX19SPA4 | CAX19VPA4 | 4U | 177.0mm |
| CAX19SPA5 | CAX19VPA5 | 5U | 221.5mm |
| CAX19SPA6 | CAX19VPA6 | 6U | 265.9mm |
| CAX19SPA9 | CAX19VPA9 | 9U | 399.2mm |

Attachment set

- M6x15mm screw, PA washer, M6 caged nut



| PART NO. | DESCRIPTION |
|-----------|----------------------------|
| CAX000001 | Attachment set (pack of 4) |