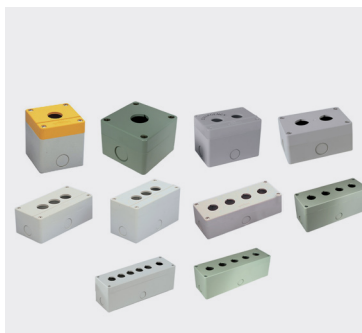


Electrical control switch enclosures

Product overview

- IP65 ABS enclosures suitable for control switches and equipment
- Grey and yellow lid colour options
- Standard box holes moulded for 22mm diameter control switches
- 21mm diameter (PG13.5) knockouts moulded into the enclosure
- Pre assembled control station and control switching available to order
- Larger sizes to order
- This series has been designed to meet the requirements of IP65



SPECIFICATION		
Material	ABS	
Protection class	2910 series has been designed to meet the requirements of IP65	
Rated temperature	Operating	-25°C to +70°C
	Storage	-40°C to +80°C
Standard colours	Box and lid	Grey RAL 7035
	Lid	Yellow RAL 1103

Single button



PART NO.	LID COLOUR	LENGTH	WIDTH	HEIGHT
CCS00GY01	Grey	70mm	70mm	51mm
CCS00YW01	Yellow	70mm	70mm	51mm
CCS03GY01	Grey	70mm	70mm	74mm
CCS03YW01	Yellow	70mm	70mm	74mm

Two button



PART NO.	LID COLOUR	LENGTH	WIDTH	HEIGHT
CCS05GY02	Grey	105mm	70mm	51mm
CCS06GY02	Grey	105mm	70mm	74mm

Three button



PART NO.	LID COLOUR	LENGTH	WIDTH	HEIGHT
CCS07GY03	Grey	140mm	70mm	51mm
CCS08GY03	Grey	140mm	70mm	74mm

Four button



PART NO.	LID COLOUR	LENGTH	WIDTH	HEIGHT
CCS09GY04	Grey	185mm	70mm	51mm
CCS10GY04	Grey	185mm	70mm	74mm

Five and six button



PART NO.	BUTTONS	LID COLOUR	LENGTH	WIDTH	HEIGHT
CCS11GY05	5	Grey	225mm	70mm	74mm
CCS11GY06	6	Grey	225mm	70mm	74mm

ACCESSORIES

Mounting plates



PART NO.	DESCRIPTION
CCSP01	1
CCSP02	2
CCSP03	3
CCSP04	4
CCSP05	5

For 6 button use 2x CCSP03

KEY FEATURES

IP65 ABS | Colour options | Larger sizes to order



ASSOCIATED PRODUCTS

- IP65 illuminated pushbuttons page 187
- 22mm diameter control switches pages 188-190
- 22mm piezo switches pages 204-207