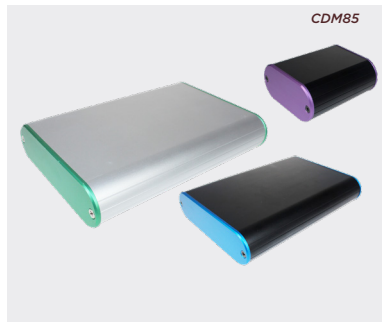


85 series round aluminium cases



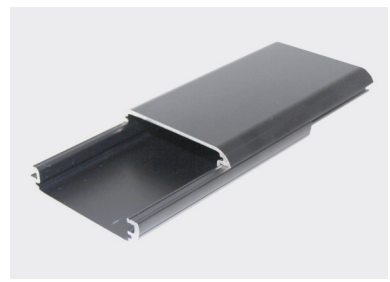
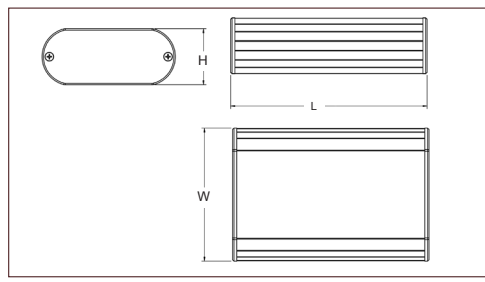
Product overview

- Extruded aluminium case
- Extrusion is split through the centre for ease of access
- Flush fitting two part extrusion
- Screw on end panels (coloured end panels available on request)
- PCB can slide into the enclosure (excludes sizes 1 and 3)
- Rubber feet supplied
- 85 series has been designed to meet the requirements of IP40



Coloured end panels available upon request

SPECIFICATION	
Materials	End panels - aluminium (anodised) Body - aluminium (anodised)
Standard colours	Black and silver
Standard unit includes	Base, end panels and 4 self tapping screws (coloured end panels available upon request)
IP rating	85 series has been designed to meet the requirements of IP40



SIZE	BLACK	SILVER	LENGTH	WIDTH	HEIGHT
1	CDM8501BK	CDM8501SL	49mm	48mm	13mm
3	CDM8503BK	CDM8503SL	109mm	48mm	13mm
5	CDM8505BK	CDM8505SL	74mm	41mm	15mm
9	CDM8509BK	CDM8509SL	96mm	57mm	18mm
12	CDM8512BK	CDM8512SL	114mm	70mm	20mm
14	CDM8514BK	CDM8514SL	94mm	82mm	24mm
18	CDM8518BK	CDM8518SL	144mm	100mm	16mm
20	CDM8520BK	CDM8520SL	112mm	110mm	30mm
24	CDM8524BK	CDM8524SL	112mm	70mm	35mm
27	CDM8527BK	CDM8527SL	140mm	95mm	40mm
30	CDM8530BK	CDM8530SL	200mm	130mm	35mm

KEY FEATURES

Extruded aluminium | Two part extrusion

