
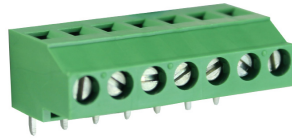


PCB TERMINAL BLOCKS

5.08mm Pitch High Power 90° Rising Clamp Terminal Blocks

- 2 & 3 pole double interlocking mechanism for increased strength
- 4-12 pole solid block
- Moulded in green UL94-V0 flame retardant PA
- Professional rising clamp terminals
- 0.2-4.0mm² (30-12AWG) solid cable
- 0.2-2.5mm² (30-12AWG) stranded cable
- Guided pin alignment
- Captive screw
-  approved

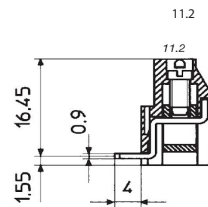
CTB0758



| TYPE NO. | POLES | LENGTH |
|------------|-------|---------|
| CTB0758/2 | 2 | 10.16mm |
| CTB0758/3 | 3 | 15.24mm |
| CTB0758/4 | 4 | 20.32mm |
| CTB0758/5 | 5 | 25.4mm |
| CTB0758/6 | 6 | 30.48mm |
| CTB0758/7 | 7 | 35.56mm |
| CTB0758/8 | 8 | 40.64mm |
| CTB0758/9 | 9 | 45.72mm |
| CTB0758/10 | 10 | 50.8mm |
| CTB0758/11 | 11 | 55.88mm |
| CTB0758/12 | 12 | 60.96mm |

SPECIFICATION

| | |
|---------------------------|---|
| Rating | 24A/320V UL=16A/300V, VDE&IMQ=24A/450V |
| Dielectric strength | ≥2.5kV |
| Impulse withstand voltage | 4kV |
| Working temperature | 110°C |
| Moulding | UL94-V0 flame retardant PA |
| Pin/terminal | Tinned, nickel plated brass |
| Rising clamp | Tinned, nickel plated brass |
| Screw/torque | M3 steel zinc plated, 0.5Nm |
| Recommended PCB hole size | ø1.5mm |



For other dimensions see CTB0708

PCB
TERMINAL
BLOCKS

INTER-
CONNECTION

FUSES &
FUSE-
HOLDERS

LEDs &
INDICATORS

MINIATURE
SWITCHES

LIMIT &
SAFETY
SWITCHES

CONTROL
PRODUCTS

INTERFACE
MODULES &
SUPPORTS

RELAY
BASES

DIN RAIL
ENCLOSURES

BATTERIES

SOLAR
PANELS

TRANS-
FORMERS