

TECHNICAL DATA SHEET

PRO-ELEC

T8 LED Linear Fixture Model PEL01594 - 596

**RoHS
Compliant**

Input voltage	AC176-265V 50/60Hz
Input Current	100mA(MAX)
Input Power	10W
PF	>0.9
Output voltage	60V±10%
Output current	152mA(MAX)
CCT	3000K/4000K/65000K
CRI	≥80
Lumen output	855lm±10%
LM/W	95lm/w
Lumen maintenance	3000H@96% 6000H@92%
LED brand	SANAN
LED type	2835
LED quantity	60PCS
Transmittance	90%
Beam angle	>120°
Body material	PC +ALU
Lifetime	30000H
Warranty	3 years
IP	IP20
Working Temperature	-20°C~45°C
Working Humidity	≤80%RH
Temperature and humidity of storage	20°C~65°C@≤95%RH
Certificate	CE/ROHS

Important Notice : This data sheet and its contents (the "Information") belong to pro-ELEC. No licence is granted for the use of it other than for information purposes in connection with the products to which it relates. No licence of any intellectual property rights is granted. The Information is subject to change without notice and replaces all data sheets previously supplied. The Information supplied is believed to be accurate but pro-ELEC assumes no responsibility for its accuracy or completeness, any error in or omission from it or for any use made of it. Users of this data sheet should check for themselves the Information and the suitability of the products for their purpose and not make any assumptions based on information included or omitted. Liability for loss or damage resulting from any reliance on the Information or use of it (including liability resulting from negligence or where pro-ELEC was aware of the possibility of such loss or damage arising) is excluded. This will not operate to limit or restrict pro-ELEC's liability for death or personal injury resulting from its negligence.

PRO-ELEC

TECHNICAL DATA SHEET

PRO-ELEC

T8 LED Linear Fixture Model PEL01597 - 599

**RoHS
Compliant**

Input voltage	AC176-265V 50/60Hz
Input Current	190mA (MAX)
Input Power	18W
PF	≥0.9
Output voltage	72V±10%
Output current	253mA (MAX)
CCT	3000K/4000K/6500K
CRI	≥80
Lumen output	1710lm±10%
LM/W	95lm/W
Lumen maintenance	3000H@96% 6000H@92%
LED brand	SANAN
LED type	2835
LED quantity	120PCS
Transmittance	90%
Beam angle	>120°
Body material	PC +ALU
Lifetime	30000H
Warranty	3 years
IP	IP20
Working Temperature	-20°C~45°C
Working Humidity	≤80%RH
Temperature and humidity of storage	20°C~65°C@≤95%RH
Certificate	CE/ROHS

Important Notice : This data sheet and its contents (the "Information") belong to pro-ELEC. No licence is granted for the use of it other than for information purposes in connection with the products to which it relates. No licence of any intellectual property rights is granted. The Information is subject to change without notice and replaces all data sheets previously supplied. The Information supplied is believed to be accurate but pro-ELEC assumes no responsibility for its accuracy or completeness, any error in or omission from it or for any use made of it. Users of this data sheet should check for themselves the Information and the suitability of the products for their purpose and not make any assumptions based on information included or omitted. Liability for loss or damage resulting from any reliance on the Information or use of it (including liability resulting from negligence or where pro-ELEC was aware of the possibility of such loss or damage arising) is excluded. This will not operate to limit or restrict pro-ELEC's liability for death or personal injury resulting from its negligence.

PRO-ELEC

TECHNICAL DATA SHEET

PRO-ELEC

T8 LED Linear Fixture Model PEL01600 - 602

**RoHS
Compliant**

Input voltage	AC176-265V 50/60Hz
Input Current	330mA (MAX)
Input Power	30W
PF	≥0.9
Output voltage	72V±10%
Output current	422mA (MAX)
CCT	3000K/4000K/6500K
CRI	≥80
Lumen output	2850lm±10%
LM/W	95lm/w
Lumen maintenance	3000H@96% 6000H@92%
LED brand	SANAN
LED type	2835
LED quantity	192PCS
Transmittance	90%
Beam angle	>120°
Body material	PC +ALU
Lifetime	30000H
Warranty	3 years
IP	IP20
Working Temperature	-20°C~45°C
Working Humidity	≤80%RH
Temperature and humidity of storage	20°C~65°C@≤95%RH
Certificate	CE/ROHS

Important Notice : This data sheet and its contents (the "Information") belong to pro-ELEC. No licence is granted for the use of it other than for information purposes in connection with the products to which it relates. No licence of any intellectual property rights is granted. The Information is subject to change without notice and replaces all data sheets previously supplied. The Information supplied is believed to be accurate but pro-ELEC assumes no responsibility for its accuracy or completeness, any error in or omission from it or for any use made of it. Users of this data sheet should check for themselves the Information and the suitability of the products for their purpose and not make any assumptions based on information included or omitted. Liability for loss or damage resulting from any reliance on the Information or use of it (including liability resulting from negligence or where pro-ELEC was aware of the possibility of such loss or damage arising) is excluded. This will not operate to limit or restrict pro-ELEC's liability for death or personal injury resulting from its negligence.

PRO-ELEC

TECHNICAL DATA SHEET

PRO-ELEC

**RoHS
Compliant**

T8 LED Linear Fixture Model PEL01603 - 605

Input voltage	AC176-265V 50/60Hz
Input Current	390mA(MAX)
Input Power	36W
PF	≥0.9
Output voltage	72V±10%
Output current	506mA (MAX)
CCT	3000K/4000K/6500K
CRI	≥80
Lumen output	3420lm±10%
LM/W	95lm/W
Lumen maintenance	3000H@96% 6000H@92%
LED brand	SANAN
LED type	2835
LED quantity	240PCS
Transmittance	90%
Beam angle	>120°
Body material	PC +ALU
Lifetime	30000H
Warranty	3 years
IP	IP20
Working Temperature	-20°C~45°C
Working Humidity	≤80%RH
Temperature and humidity of storage	20°C~65°C@≤95%RH
Certificate	CE

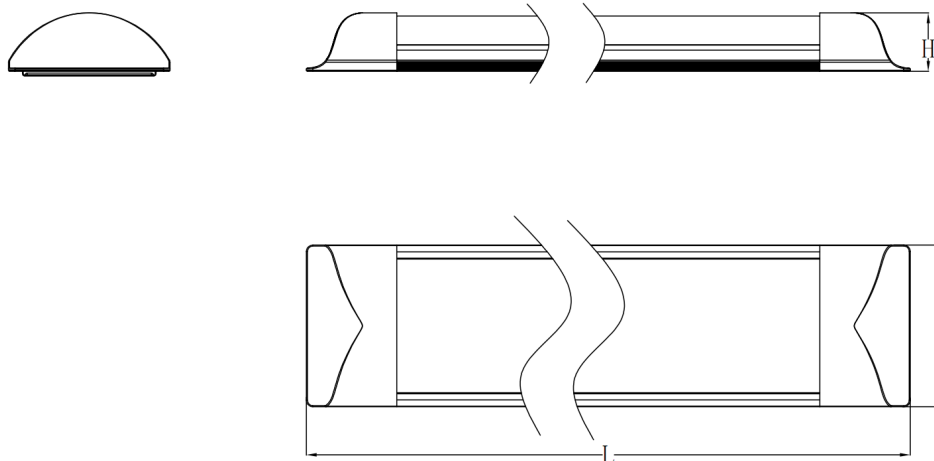
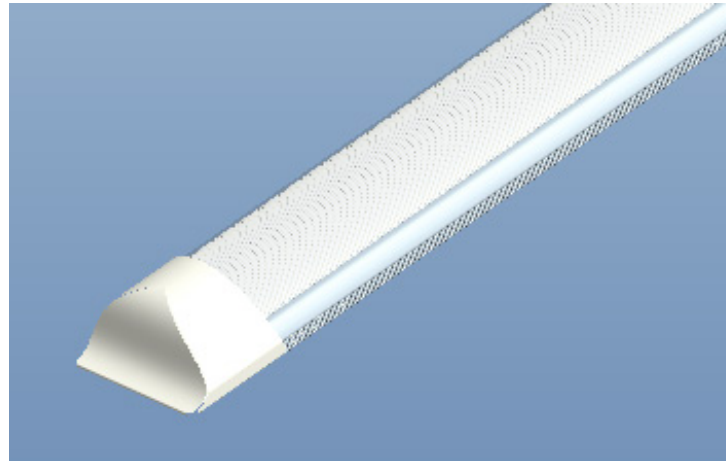
Important Notice : This data sheet and its contents (the "Information") belong to pro-ELEC. No licence is granted for the use of it other than for information purposes in connection with the products to which it relates. No licence of any intellectual property rights is granted. The Information is subject to change without notice and replaces all data sheets previously supplied. The Information supplied is believed to be accurate but pro-ELEC assumes no responsibility for its accuracy or completeness, any error in or omission from it or for any use made of it. Users of this data sheet should check for themselves the Information and the suitability of the products for their purpose and not make any assumptions based on information included or omitted. Liability for loss or damage resulting from any reliance on the Information or use of it (including liability resulting from negligence or where pro-ELEC was aware of the possibility of such loss or damage arising) is excluded. This will not operate to limit or restrict pro-ELEC's liability for death or personal injury resulting from its negligence.

PRO-ELEC

TECHNICAL DATA SHEET

PRO-ELEC

**RoHS
Compliant**



Model	Size (mm)	A	B	C
		Max	Max	Max
PEL01594-596 -0.3M	300×75×27	300	75	27
PEL01597-599 -0.6M	600×75×27	600	75	27
PEL01600-602 -0.9M	900×75×27	900	75	27
PEL01603-605 -1.2M	1200×75×27	1200	75	27
PEL01606-608 -1.5M	1500×75×27	1500	75	27

Important Notice : This data sheet and its contents (the "Information") belong to pro-ELEC. No licence is granted for the use of it other than for information purposes in connection with the products to which it relates. No licence of any intellectual property rights is granted. The Information is subject to change without notice and replaces all data sheets previously supplied. The Information supplied is believed to be accurate but pro-ELEC assumes no responsibility for its accuracy or completeness, any error in or omission from it or for any use made of it. Users of this data sheet should check for themselves the Information and the suitability of the products for their purpose and not make any assumptions based on information included or omitted. Liability for loss or damage resulting from any reliance on the Information or use of it (including liability resulting from negligence or where pro-ELEC was aware of the possibility of such loss or damage arising) is excluded. This will not operate to limit or restrict pro-ELEC's liability for death or personal injury resulting from its negligence.

PRO-ELEC