

# Through Hole Red LED 3mm (T1)

**multicomp** PRO

**RoHS  
Compliant**



## Specifications

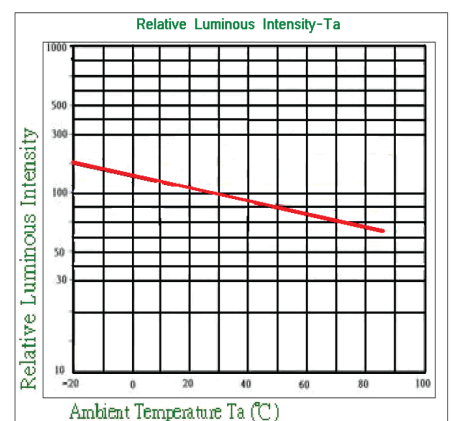
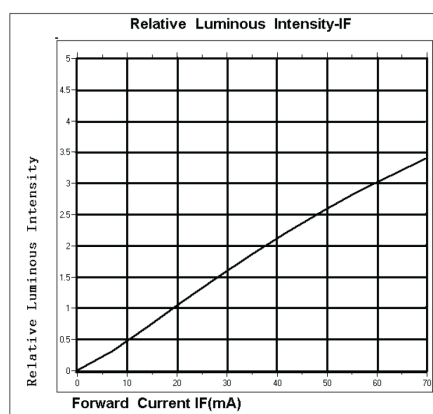
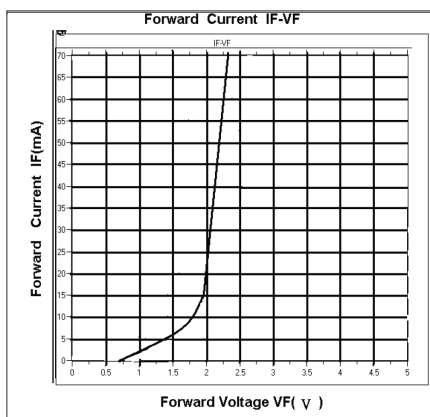
Forward Current	: $\leq 30\text{mA}$
Wide Viewing Angle	: 25 Deg.
Operating Temperature	: $-30^{\circ}\text{C}$ to $+80^{\circ}\text{C}$
Storage Temperature	: $-40^{\circ}\text{C}$ to $+100^{\circ}\text{C}$
Junction Temperature	: $+110^{\circ}\text{C}$
Lens Colour Code	: Transparent
Lead Frame	: Ag Plating Iron Alloy
Resin (Mold)	: Epoxy
Chip Material	: AlGaInP
Reverse Voltage	: 5V
Pulsed Forward Current	: 100mA
Duty 1/10	: Pulse width 0.1ms

## Electrical Optical Characteristics (Ta = 25)

Parameter	Symbol	Value			Unit	Test condition
		Min.	Typ.	Max.		
Forward Voltage	Vf	1.7	2	2.7	V	If=20mA
Luminous Intensity	Iv	1300	2500		mcd	If=20mA
Wavelength	$\lambda_d$	620		630	nm	If=20mA
Reverse Current	Ir			10	$\mu\text{A}$	Vr=8V
Viewing Angle	$2\theta_{1/2}$		25		Deg.	If=20mA

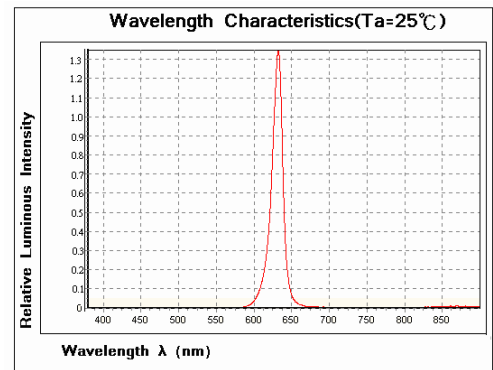
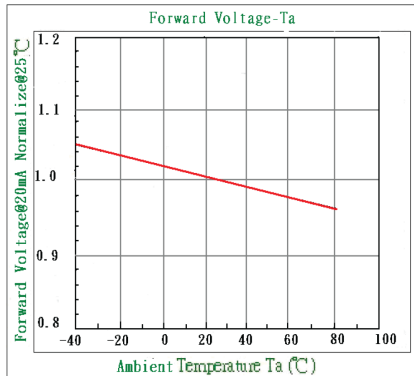
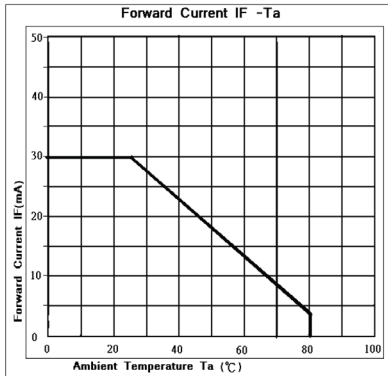
1. Luminous intensity (IV)  $\pm 10\%$ , Forward Voltage (VF)  $\pm 0.1\text{V}$ , Wavelength ( $\lambda_d$ )  $\pm 0.5\text{nm}$ .
2. IS standard testing.

## Optical Characteristics Curves

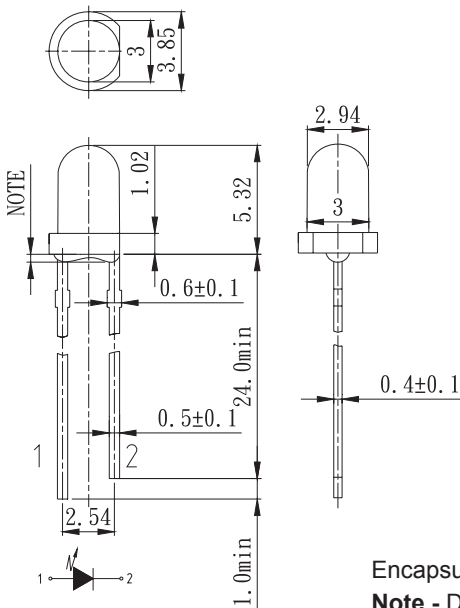


# Through Hole Red LED 3mm (T1)

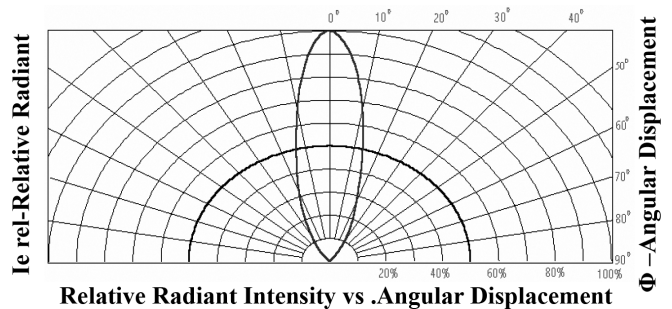
multicomp **PRO**



## Diagram



## Directive Characteristics (TA=25°C)



Encapsulation tolerance : ±0.25mm to ±0.3mm

**Note** - Dim. of protruded resin flange : 1mm (Max.)

Dimensions : Millimetres

## Part Number Table

Description	Part Number
Through Hole LED, Red, 2V, 2500mcd, 625nm	MP001244

**Important Notice** : This data sheet and its contents (the "Information") belong to the members of the AVNET group of companies (the "Group") or are licensed to it. No licence is granted for the use of it other than for information purposes in connection with the products to which it relates. No licence of any intellectual property rights is granted. The Information is subject to change without notice and replaces all data sheets previously supplied. The Information supplied is believed to be accurate but the Group assumes no responsibility for its accuracy or completeness, any error in or omission from it or for any use made of it. Users of this data sheet should check for themselves the Information and the suitability of the products for their purpose and not make any assumptions based on information included or omitted. Liability for loss or damage resulting from any reliance on the Information or use of it (including liability resulting from negligence or where the Group was aware of the possibility of such loss or damage arising) is excluded. This will not operate to limit or restrict the Group's liability for death or personal injury resulting from its negligence. Multicomp Pro is the registered trademark of Premier Farnell Limited 2019.

Newark.com/multicomp-pro  
Farnell.com/multicomp-pro  
Element14.com/multicomp-pro

multicomp **PRO**