

Chassis Mount and Aluminium Housed Resistor, 1% **multicomp** PRO

**RoHS
Compliant**

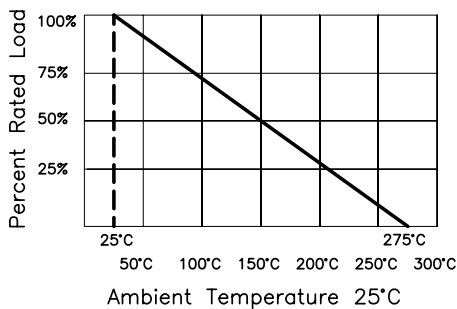
Specifications

Materials

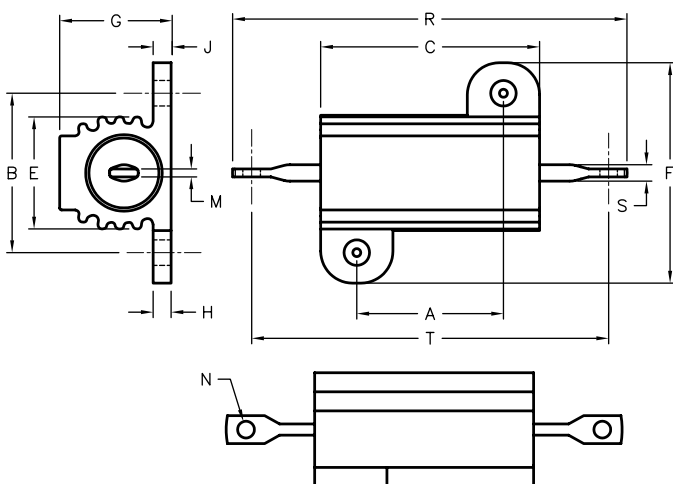
Housing	: Metal, Anodized Aluminium
Internal Coating	: Silicone
Core	: Ceramic
Terminals	: Solder-coated axial lead
Derating Linearly from 100% @ +25°C to 0% @ +275°C	
Power Rating	: Based on chassis mounting area and temperature stability
Overload	: 5 times rated wattage for 5 seconds
Temperature Coefficient	: >1Ω : ±90ppm/°C 1Ω to 9.99Ω: ±50 ppm/°C 10Ω and over: ±20 ppm/°C
Dielectric withstanding Voltage	: 5W & 10W rating, 1000V AC 25W & 50W rating, 2250V AC
Inductance	: Single layer inductive windings



Wattage Derating Chart



Diagram



Dimensions	10 Watt	50 Watt
A	0.562 (14.27)	1.563 (39.7)
B	0.625 (15.88)	0.844 (21.44)
C	0.75 (19.05)	1.968 (49.99)
E	0.42 (10.67)	0.63 (16)
F	0.8 (20.32)	1.14 (28.96)
G	0.39 (9.91)	0.61 (15.49)
H	0.075 (1.9)	0.088 (2.24)
J	0.183 (4.65)	0.26 (2.54)
M	0.14 (3.56)	0.14 (3.56)
N	Ø0.086 (Ø2.18)	Ø0.086 (Ø2.18)
R	1.375 (34.93)	2.781 (70.64)
S	12AWG	12AWG
T	1.175 (29.85)	2.59 (65.79)

Dimensions : Inches (Millimetres)

Chassis Mount and Aluminium Housed Resistor, 1% **multicomp** PRO

Part Number Table

Description	Resistance (Ω): ±1%	Wattage (W)	Part Number
Chassis Mount and Aluminium Housed Resistor	0.1	10	MC14722
	0.5		MC14723
	1		MC14726
	10		MC14725
	50		MC14728
	100		MC14724
	300		MC14727
	0.1	50	MC14729
	0.15		MC14730
	0.2		MC14731
	0.3		MC14732
	0.5		MC14733
	1		MC14736
	2		MC14739
	2.5		MC14738
	3.3		MC14742
	5		MC14746
	15		MC14737
	10		MC14735
	25		MC14741
	50		MC14745
	100		MC14734
	250		MC14740
	300		MC14743
	500		MC14744

Important Notice : This data sheet and its contents (the "Information") belong to the members of the AVNET group of companies (the "Group") or are licensed to it. No licence is granted for the use of it other than for information purposes in connection with the products to which it relates. No licence of any intellectual property rights is granted. The Information is subject to change without notice and replaces all data sheets previously supplied. The Information supplied is believed to be accurate but the Group assumes no responsibility for its accuracy or completeness, any error in or omission from it or for any use made of it. Users of this data sheet should check for themselves the Information and the suitability of the products for their purpose and not make any assumptions based on information included or omitted. Liability for loss or damage resulting from any reliance on the Information or use of it (including liability resulting from negligence or where the Group was aware of the possibility of such loss or damage arising) is excluded. This will not operate to limit or restrict the Group's liability for death or personal injury resulting from its negligence. Multicomp Pro is the registered trademark of Premier Farnell Limited 2019.