



5MP HYBRID DVR

MODELS: DFR-5MP-XVR4 & DFR-5MP-XVR8

Please read these instructions carefully before use and retain for future reference.

IMPORTANT SAFETY INFORMATION

- When using electrical appliances basic safety precautions should always be followed.
- Check that the voltage indicated on the rating plate corresponds with that of the local network before connecting the PSU to the mains power supply.
- Do not expose the unit to rain or moisture or liquids of any sort, as doing so may result in damage. Although the cameras attached may be outdoors this DVR is only intended to be used indoors.
- Do not install near heat sources such as radiators, ovens, or other devices that produce heat.
- Install in a well ventilated space to allow good heat dissipation.
- Never block the cooling vents.
- The DVR can be installed flat on a horizontal surface or wall mounted.
- Avoid installing in areas with high vibration or impacts as these may damage the internal hard drives.
- If the unit is not in use for a long period of time, switch the power off and unplug the power supply.
- Before cleaning, switch off the power and unplug the power supply.

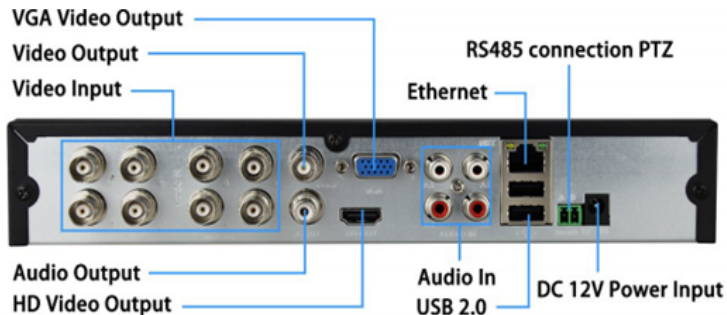
FEATURES

- Four or eight video BNC socket input channels (depending on the model).
- Four audio input channels and one audio output via RCA sockets.
- HDMI and VGA video outputs.
- SATA hard disk interface supporting 2.5" or 3.5" drives up to 8TB.

WALL MOUNTING

- Ensure the mounting surface can support the weight of the unit and that there are no concealed pipes or wiring.
- Referring to the keyhole slots on the base on the unit, drill two holes horizontally 195mm apart and insert suitable wall plugs if required.
- Screw in two suitable screws leaving the heads approximately 2-3mm proud of the surface.
- Attach the DVR onto these screws making sure the unit has engaged securely.

PRODUCT OVERVIEW



HARD DRIVE INSTALLATION (BB MODELS ONLY)

- Disconnect the power supply.
- Remove the screw in the top centre of the rear panel and the screw on each side of the unit and remove the top casing.
- With reference to the four keyhole slots in the base of the unit, partly insert a suitable screw into the relevant threaded mounting points on the hard drive.
- Connect the power and data cables to the hard drive then locate the mounting screws into the keyhole slots, slide sideways then from underneath, tighten them to fix the drive into place.
- Route the cables neatly ensuring all the connectors are fully pushed home.
- Refit the top casing and replace the three screws.

Note: only use hard drives recommended by the manufacturer for continuous DVR usage.



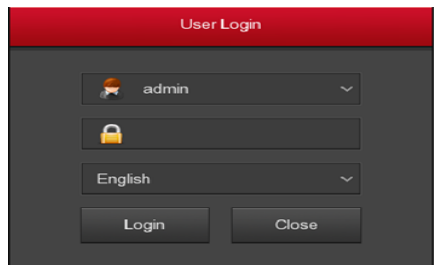
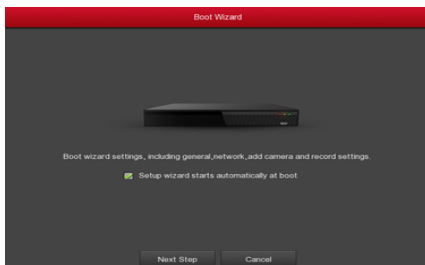
Drive Mountings



LOGGING ON

- Connect the cameras to the video input sockets.
- Connect a monitor to either the VGA/HDMI output sockets as required.
- Connect the mouse to a USB socket.
- Connect the power supply to the DC socket and plug into a mains socket and turn the power on. The red LED on the front panel will light.
- The DVR will display the boot screen followed by the log on window.
- Default username is 'admin' and password is '12345'.
- After successful log on you can set the general configuration of the unit including modifying the username and password, language, video standard and the time.
- Click 'Next' to set further parameters as follows:

Note: If you have previously configured all parameters the set up wizard can be bypassed on future booting by un-ticking the option box on the boot screen. You can also turn off the boot wizard in Settings/General.



CONFIGURATION

Network Settings

- Ensure the DVR is correctly connected to the local network via the RJ45 Ethernet socket. The network parameters must be correctly set before operating the device over the network.
- The interface displays the IP/Port settings where it is possible to modify the address and port as required. Default is 168.192.1.88

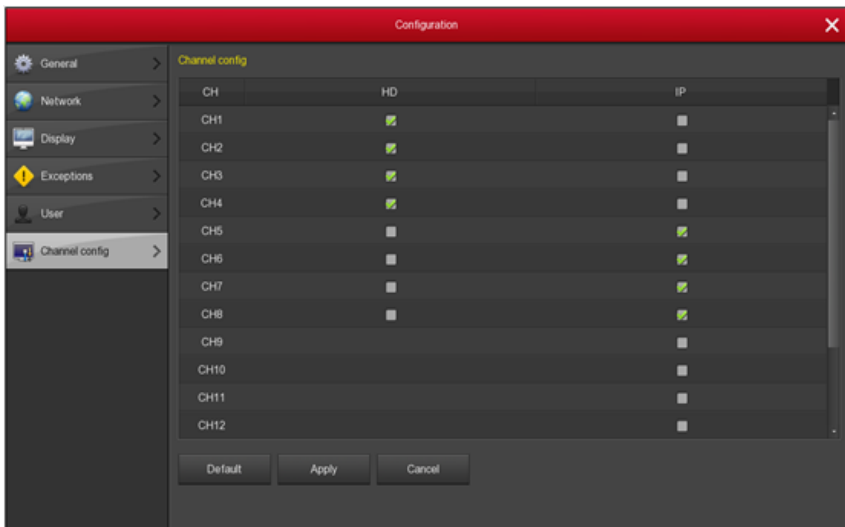
Channel Configuration

- Select the signal type for each input channel connected.
- In HD mode you can access TVI/CVBS/AHD/CVI signals and IP allows access to IP equipment.
- Click Apply/Confirm to store the setting and the device will reboot to use the modified configuration.
- In the preview interface if there is no signal on an HD channel the display shows 'HD Video' and on an IP channel it states 'No Config'.

Note: If there is no input device on a channel the display shows 'NO VIDEO'.

IP Channel Configuration

- Ensure the network configuration is correct and valid.
- Select Camera/Add Camera then select either 'Auto Add' or to manually search for a device click on 'Add' and choose 'Onvif' or 'Private'.
- Select the IP address to be added and click 'Add' then select the channel then 'Save' to confirm.



Recording Schedule

- By default all channels are set to record for 24hrs (continuous).
- To change to a selective schedule choose 'Record/Schedule' to enter the record timer.
- Select the channel and recording type as required then click and drag the pointer in the time period or click '⚙️' to set the desired parameters.

Instant Playback

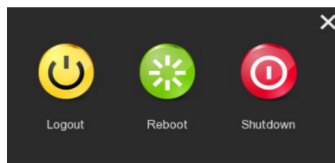
- By clicking on any channel display the video playback control will be shown below the window.

Playback

- Choose 'Playback' or right click on the preview interface and select 'Playback'.
- Select Date/Channel/More then double click to search for the file.
- Alternatively select 'Time/Channel' then click on the progress bar to play the video.

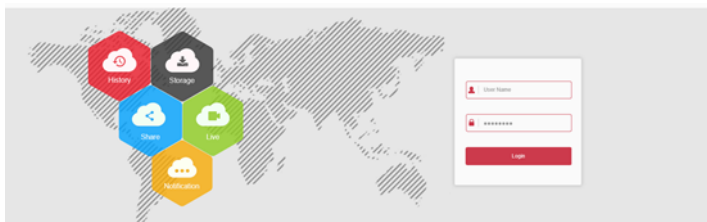
Shutdown

- From the menu choose 'Shut Down' and the pop up window will appear from where you can log out reboot or shut the system down.



WEB OPERATION

- To perform viewing and setting changes via a PC, the computer must be on the same local network as the DVR and on the same network segment.
- Ensure Active-X and plug-ins are enabled in your browser settings (you may need to download and install the OCX plug-in).
- In your browser go to URL <http://192.168.1.88/> to download and install the OCX plug-in.
- Once installed refresh your browser window and choose your language setting then log on. If you changed the default admin and password previously, use these or otherwise use the default 'admin/12345' to log on.
- After logging on successfully you can enter the preview mode and select the channel to view.
- Other system settings can be changed from the web interface such as network, storage, playback, upgrade and factory reset.



MOBILE APP OPERATION

- Search the app store for “BitVision” or scan the QR codes below and download and install the app:



Android App QR




iOS App QR

- Run the app and swipe right to reveal the sidebar.
- Select the Log in option and register a new account.
- Enter the Captcha as directed which will be sent to the email address you give then log in.
- Select ‘Device Manage’ then ‘+’ followed by ‘Add Device’.
- Select ‘SN Add’ and Scan the QR code on the label on the bottom of the device
- Enter your user name and password and then when prompted enter your chosen device name and group.
- Select ‘Submit’ to store the settings then select ‘Finish’ to access the functions.

Live Preview

- From the sidebar options select ‘Real Time’ then ‘+’ to enter the device list and select the channel to be viewed then choose ‘Preview’ to show the live feed for that channel.

Playback History

- Select ‘History Playback’ from the sidebar then ‘’ to see the device list and select the channel then select ‘Done’.

CLEANING AND MAINTENANCE

- When cleaning, use a soft dry cloth to remove any dust that may have accumulated.
- Use a damp cloth and a small amount of liquid detergent if necessary.
- Do not use any chemicals, abrasives or solvents that could damage the unit.

SPECIFICATION

Model	DFR-5MP-XVR4	DFR-5MP-XVR8
Processor/Codect	HISilicon HI3520DV400	
Op Sys	Embedded Linux	
Video Input Normal Mode: Analogue:	4×(AHD/TVI/CVI:8M; TVI/AHD: 5M; AHD/TVI/CVI: 4M; AHD/TVI: 3M; AHD/TVI/CVI: 1080P/720P; Analogue: 960H)	8×(AHD/TVI/CVI:8M; TVI/AHD: 5M; AHD/TVI/CVI: 4M; AHD/TVI: 3M; AHD/TVI/CVI: 1080P/720P; Analogue: 960H)
Lite Mode: Analogue:	4×(AHD/TVI/CVI: 1080P/720P; Analogue: 960H)	8×(AHD/TVI/CVI: 1080P/720P; Analogue: 960H)
Analogue+Network:	2×Analogue(1080P) +7×network (MAX 5MP)	6×Analogue (1080P) +3×network (Max 8MP), 4×Analogue (1080P) +5×network (Max 8MP), 2×Analogue (1080P) +7×network (Max 8MP)
Network:	12×5MP/4MP/3MP/1080P/960P/720P (Total incoming bandwidth=48M)	16×8MP/5MP/4MP/3MP/1080P/960P/720P (Total incoming bandwidth=80M)
Input:	4CH BNC	8CH BNC
Signal Type;	Analogue/AHD/CVI/TVI 2.0/TVI 3.0/Network	
Output:	1 HD, 1 VGA	
Audio Input:	4 Channel, RCA	
Audio Output:	1 Channel, RCA	
Motion Detection:	4 Channel (max 16 Channel in pure network mode)	
Trigger Events:	Email, Screen tips, Buzzer, Push notifications (motion detection)	
Email Alarm:	Send image to the designated e-mail	
Interface/ Protocol:	RS485 / Pelco-D, Pelco-P	
Baud Rate/Address:	110~921600/0~255	
Display VGA Resolution:	1920×1080P/60Hz, 1280×1024/60Hz, 1280×720/60Hz,1024×768/60Hz	
HD Output Normal Mode:	2560×1440/30Hz, 1920×1080P/60Hz 1280×1024/60Hz 1280×720/60Hz,1024×768/60Hz	3840×2160/30Hz, 2560×1440/30Hz 1920×1080P/60Hz, 1280×1024/60Hz 1280×720/60Hz,1024×768/60Hz
Lite Mode:	3840×2160/30Hz, 2560×1440/30Hz, 1920×1080P/60Hz, 1280×1024/60Hz 1280×720/60Hz, 1024×768/60Hz	
Display Split:	16 Channel/9 Channel/4 Channel/1Channel	
Privacy Masking:	3 Rectangular Zones (Each camera)	
OSD:	Camera title, Time, Video loss, Alarm, Motion detection, Recording	
Recording Video Compression:	H.265/H.265+/H.264/H.264+	
Audio Compression:	G.711u	
Resolution:	5MP(2592×1944),8MP_LITE(1920×2160),5MP_HALF(1296×1944),4MP(2560×1440),4MP_HALF(1280×1440),3MP(2048×1536),1080P(1920×1080),720P(1280×720),960H(960×576)	
Record Rate Normal Mode Analogue:	PAL:8MP_LITE(1920×2160 4×8fps), 5MP(2592×1944 4×6fps), 5MP_HALF(1296×1944 4×10fps),4MP(2560×1440 4×8fps),4MP_HALF(1280×1440 4×15fps),3MP(2048×1536 4×9fps),1080P(1920×1080 4×15fps),720P(1280×720 4×25fps), 960H(960×576 4×25fps)	
Lite Mode Analogue:	Half 1080P(960x1080 4×25fps),720P(1280×720 4×25fps), 960H(960×576 4×25fps)	
Pure IP (H.265):	PAL: 5MP@12x25fps, 3MP@12x25fps,1080P@12x25fps, 960P@12x25fps, 720P@12x25fps, D1@12x25fps	PAL:4k@8x25fps, 5MP@12x25fps, 4MP@16x25fps, 3MP@16x25fps, 1080P@16x25fps, 960P@16x25fps, 720P@16x25fps, D1@16x25fps
Record Mode:	Manual/Timer/Motion Detection	

Playback & Backup Decode Capability:	2CH 1080P@30fps	4CH 1080P@30fps
Sync Playback Pure Analogue:	4CH 5MP@6fps, 4CH 8MP Lite@8fps, 4CH 4MP@8fps, 4CH 3MP@9fps, 4CH 1080p@15fps, 4CH 1080N@25fps	8CH 5MP@6fps, 4CH 8MP Lite@8fps, 8CH 4MP@8fps, 8CH 3MP@9fps, 8CH 1080P@15fps, 8CH 1080N@25fps
Mix Mode:	1CH 5MP@30fps, 1CH 4MP@30fps, 1CH 3MP@30fps, 2CH 1080P@30fps, 3CH 1080p@15fps	4CH 5MP@6fps, 4CH 4MP@8fps, 4CH 3MP@9fps, 4CH 1080P@15fps, 1CH 8MP 30fps, 2CH 5MP 30fps, 2CH 4MP @30fps, 2CH 3MP@30fps
Pure IPC:	1CH 5MP@30fps, 1CH 4MP@30fps, 1CH 3MP@30fps, 4CH 1080P@30fps, 4CH 960P@30fps, 4CH 720P@30fps	1CH 4K@30fps, 2CH 5MP@30fps, 3CH 4MP@30fps, 4CH 3MP@30fps, 4CH 1080P@30fps, 4CH 960P@30fps, 4CH 720P@30fps
Remote Playback:	4 Channel/1Channel	
Search Mode:	ALL, Channel, Manual, Time, Date, Motion Detection	
Playback Functions:	Play, Pause, Stop, Fast play, Rewind, Digital Zoom, Full screen	
Smart Phone Playback:	4 Channel	
Backup Mode:	USB Device(with format FAT 32) / Network/FTP	
Network Interface:	1 RJ45 10M/100M Adaptive Ethernet Interface	
Network Functions	TCP/IP, HTTP, UPnP, DNS, NTP, SMTP, PPPoE, DHCP, FTP, DDNS, RTP, RTSP, RTCP	
DDNS:	DynDNS, changeip, no-ip, Oray, A-PRESS, MYQSEE, SKDDNS, SMART-EYES, ZEBEYE	
Web Browser:	IE8-11, Google Chrome (lower than Ver44), Firefox (lower than Ver53)	
CMS Software Support:	Windows 7 / Windows 8 / Windows 10	
Extra Stream:	CIF(1~25fps)	CIF(1~30fps)
Smart Phone:	iPhone, iPad, Android, Android pad	
Hard Disk Drive Interface:	Type1 SATA Interface	
Capacity:	1 SATA Hard Disk (2.5"/3.5" SATA, Up to 8TB)	
UTC Control:	Yes	
USB Interface:	2 USB 2.0 Interfaces	
Power consumption:	DC 12V @ 6W (Without Hard Disk)	
Working Environment:	-10~55°/10~90%	
Dimension (W × D × H)	260 x 215 x 43(mm)	
Weight:	2kg (Without HDD)	



INFORMATION ON WASTE DISPOSAL FOR CONSUMERS OF ELECTRICAL & ELECTRONIC EQUIPMENT.

When this product has reached the end of its life it must be treated as Waste Electrical & Electronic Equipment (WEEE). Any WEEE marked products must not be mixed with general household waste, but kept separate for the treatment, recovery and recycling of the materials used. Contact your local authority for details of recycling schemes in your area.

