

## Surge protection device - DT-UFB-IB-RBI - 2800055

Please be informed that the data shown in this PDF Document is generated from our Online Catalog. Please find the complete data in the user's documentation. Our General Terms of Use for Downloads are valid (<http://phoenixcontact.com/download>)




Attachment plug with surge protection for 5-conductor remote bus input. Connection: 9-pos. D-SUB plug - socket. Can alternatively be snapped onto DIN rails. Incl. 1 m cable with 9-pos. D-SUB connection.

### Your advantages

- ✓ 9-pos. D-SUB connection
- ✓ Adapter type
- ✓ DIN rail mounting possible by removing the cap
- ✓ D-SUB cable included
- ✓ For remote bus modules (remote bus IN - RBI)



### Key Commercial Data

Packing unit	1 pc
GTIN	 4 046356 462716
GTIN	4046356462716
Weight per Piece (excluding packing)	436.000 g
Custom tariff number	85363010
Country of origin	Germany
Note	Made to Order (non-returnable)

### Technical data

#### Dimensions

Height	110 mm
Width	25 mm
Depth	63 mm

#### Ambient conditions

Ambient temperature (operation)	-40 °C ... 85 °C
Degree of protection	IP20

#### General

# Surge protection device - DT-UFB-IB-RBI - 2800055

## Technical data

### General

Housing material	Zinc die-cast
Color	silver/black
Standards for clearances and creepage distances	IEC 60664-1
	VDE 0110-1
Mounting type	Connection-specific attachment plug and DIN rail, 35 mm
Type	Attachment plug for DIN rail mounting
Number of positions	5
Direction of action	Line-Line & Line-Ground/Shield

### Protective circuit

IEC test classification	B2
	C1
	C2
	C3
	D1
VDE requirement class	B2
	C1
	C2
	C3
	D1
Maximum continuous voltage $U_C$	5.8 V DC
Rated current	$\leq 180$ mA (25 °C)
Operating effective current $I_C$ at $U_C$	$\leq 1$ $\mu$ A
Residual current $I_{PE}$	$\leq 5$ $\mu$ A
Nominal discharge current $I_n$ (8/20) $\mu$ s (line-line)	$\leq 5$ kA
Nominal discharge current $I_n$ (8/20) $\mu$ s (line-earth)	$\leq 5$ kA
Total discharge current $I_{total}$ (8/20) $\mu$ s	10 kA
Output voltage limitation at 1 kV/ $\mu$ s (line-earth) spike	$\leq 700$ V
Output voltage limitation at 1 kV/ $\mu$ s (line-line) static	$\leq 15$ V
Output voltage limitation at 1 kV/ $\mu$ s (line-earth) static	$\leq 700$ V
Output voltage limitation at 1 kV/ $\mu$ s (line-signalground) static	$\leq 15$ V
Residual voltage at $I_n$ (line-line)	$\leq 25$ V
Residual voltage at $I_n$ (line-earth)	$\leq 55$ V
Residual voltage at $I_n$ (line-signalground)	$\leq 25$ V
Voltage protection level $U_p$ (line-line)	$\leq 16$ V (B2 - 100 A)
	$\leq 20$ V (C1 - 500 A)
	$\leq 20$ V (C2 - 1 kA)
	$\leq 60$ V (C2 - 5 kA)
Voltage protection level $U_p$ (line-earth)	$\leq 700$ V (B2 - 100 A)
	$\leq 700$ V (C1 - 500 A)
	$\leq 700$ V (C2 - 5 kA)

# Surge protection device - DT-UFB-IB-RBI - 2800055

## Technical data

### Protective circuit

Response time $t_A$ (line-line)	$\leq 1$ ns
Response time $t_A$ (line-earth)	$\leq 100$ ns
Input attenuation aE, sym.	typ. 0.5 dB ( $\leq 5$ MHz / 150 $\Omega$ )
	typ. 0.6 dB ( $\leq 10$ MHz / 100/150 $\Omega$ )
Cut-off frequency $f_g$ (3 dB), sym. in 100 Ohm system	$\geq 100$ MHz
Cut-off frequency $f_g$ (3 dB), sym. in 150 Ohm system	$\geq 100$ MHz
Capacity (line-line)	typ. 20 pF
Resistance per path	typ. 7 $\Omega$
Surge protection fault message	none
Impulse durability (line-line)	C1 - 1 kV / 500 A
	C2 - 10 kV / 5 kA
	B2 - 4 kV / 100 A
Impulse durability (line-earth)	B2 - 4 kV / 100 A
	C1 - 1 kV / 500 A
	C2 - 10 kV / 5 kA
	D1 - 1 kA

### Connection data

Connection method	D-SUB-9
Connection method IN	D-SUB-9 plug
Connection method OUT	D-SUB-9 socket
Connection technology	Remote bus input

### Connection, equipotential bonding

Connection method	Cable connection
-------------------	------------------

### Standards and Regulations

Standards/regulations	IEC 61643-21
	DIN EN 61643-21
Standards/specifications	DIN EN 61643-21 2002
	IEC 61643-21 2000

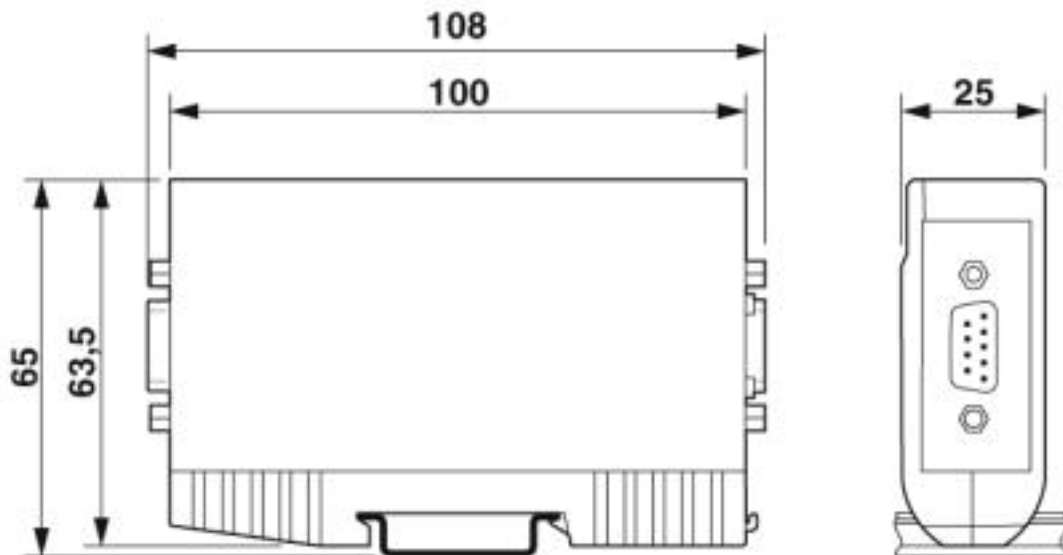
### Environmental Product Compliance

REACH SVHC	Lead 7439-92-1
China RoHS	Environmentally friendly use period: unlimited = EFUP-e
	No hazardous substances above threshold values

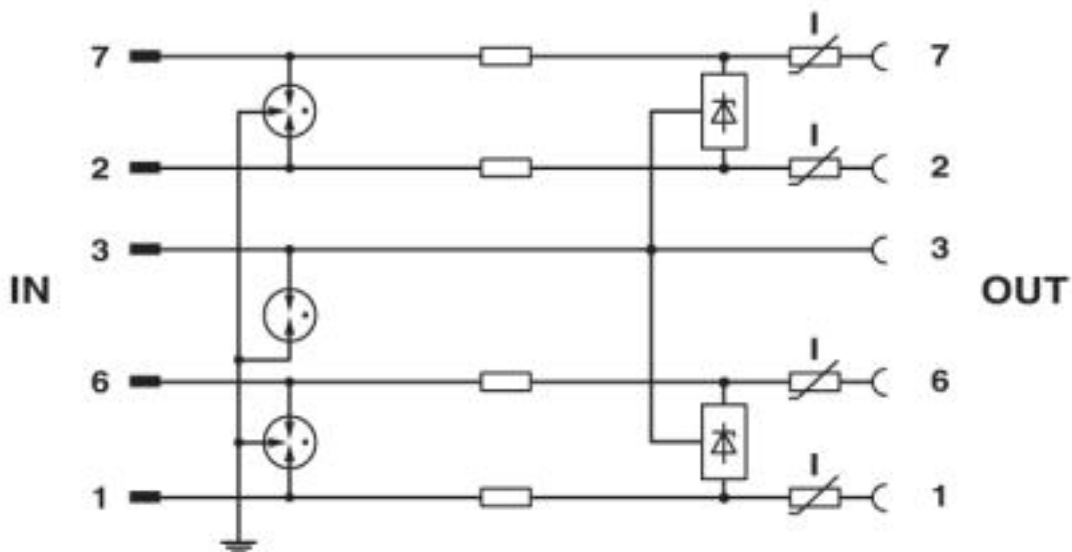
## Drawings

# Surge protection device - DT-UFB-IB-RBI - 2800055

Dimensional drawing



Circuit diagram



## Classifications

eCl@ss

eCl@ss 4.0	27130800
eCl@ss 4.1	27130800
eCl@ss 5.0	27130800
eCl@ss 5.1	27130800
eCl@ss 6.0	27130800
eCl@ss 7.0	27130807
eCl@ss 8.0	27130807

# Surge protection device - DT-UFB-IB-RBI - 2800055

## Classifications

### eCl@ss

eCl@ss 9.0	27130807
------------	----------

### ETIM

ETIM 2.0	EC000943
ETIM 3.0	EC000943
ETIM 4.0	EC000943
ETIM 5.0	EC000943
ETIM 6.0	EC000943
ETIM 7.0	EC000943

### UNSPSC

UNSPSC 6.01	30212010
UNSPSC 7.0901	39121610
UNSPSC 11	39121610
UNSPSC 12.01	39121610
UNSPSC 13.2	39121620
UNSPSC 18.0	39121620
UNSPSC 19.0	39121620
UNSPSC 20.0	39121620
UNSPSC 21.0	39121620

## Approvals

### Approvals

---

#### Approvals

EAC

---

#### Ex Approvals

---

### Approval details

EAC		RU C- DE.A*30.B01561
-----	--	-------------------------