

battery type: Lithium Button Cell
battery size: CR2477
chemical system: Lithium Manganese Dioxide

Conditions

nominal voltage: 3.0 V
open circuit voltage: 3.0...3.4 V (new battery)
 2.9...3.4 V (after 1 year storage at 20°C)

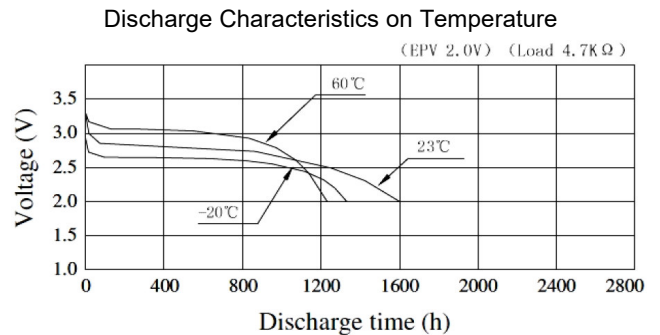
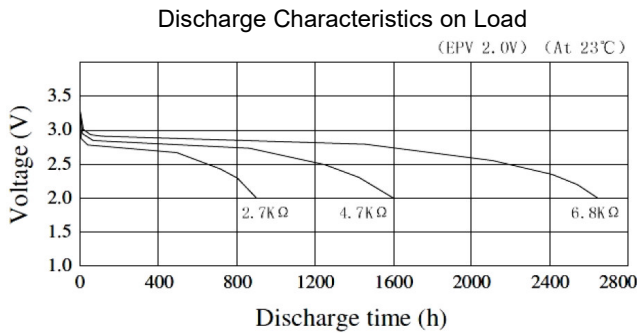
all measurements at 22 ± 2°C ambient

capacity rated: 1000 mAh (continuous discharge at 4.7kΩ load; 24hours/day End Voltage (EV): 2.0V)
minimum: 900 mAh (continuous discharge at 4.7kΩ load; 24hours/day EV: 2.0V)

standard discharge time minimum: 155 h (at 680Ω load (for QC measurement) EV: 2.0V)

discharge currents standard: 0.2 mA
 max. recommended current under continuous discharge: 6 mA
 max. recommended current under pulse discharge: 30 mA

discharge diagrams:

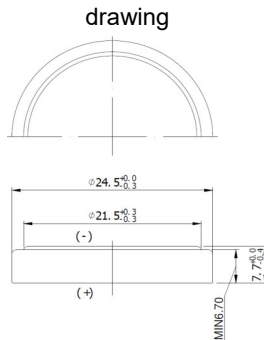


shelf life: 10 years (under proper storage conditions (ta: ≤ 22°C; RH: 60 ± 15%))
self-discharge: ≤ 2 % (per year (at 20°C ambient temperature))

operating temperature range: - 20...70 °C
storage temperature: 0...30 °C (recommended)

mechanical specifications:

outer battery dimensions
 diameter: 24.5mm +0/-0.3mm
 height: 7.7mm +0/-0.4mm



printed production date 4 digits (YYMM)
 e.g. 1806 = 2018 June

nominal weight: 10.5 g (approx.)

	ANSMANN Specifications for model:	Lithium Button Cell CR2477
	data sheet no. / part no.	
	supplier no.	704080
	author / date	TG / 07.10.2019