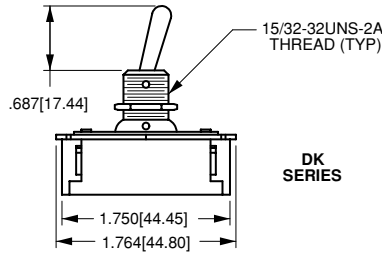
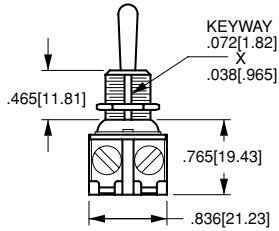


DK/EK-Series Heavy Duty Toggle Switches

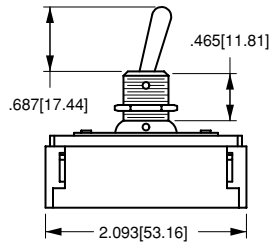
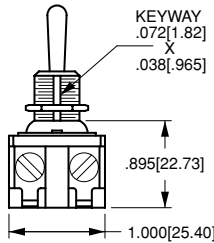


The switch that can handle your heavy duty requirements. Single or double pole with wire lead or screw terminations, and ratings to 20A 125V 10A 250V, the ac/dc DK/EK-Series is the most heavy duty toggle switch in the Carling line. Its sturdy metal construction and stiff actuation force will withstand the abuses of virtually any stringent application. The quick make/quick break contact mechanism is ideal for high voltage DC applications. The DK/EK-Series has long been a staple of the Industrial Motor control and General Purpose market segments.

Dielectric Strength
UL/CSA: 1000V - live to dead metal parts & opposite polarity
Electrical Life
 25,000 cycles
Mechanical Life
 100,000 cycles
Operating Temperature
 0°F to 150°F (-17.8°C to +65.6°C)



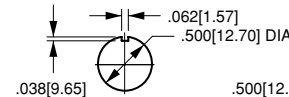
DK SERIES



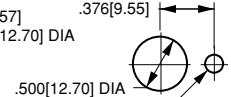
EK SERIES



MOUNTING HOLE



WITH KEYWAY



WITH LOCKING RING

WIRE LEAD	SCREW (ASSEMBLED)
TERMINAL TYPE	

DK284 - **73**

¹ Base Part Number

² Actuator Style

1 BASE PART NUMBER: SERIES/POLES/CIRCUITRY/RATING/TERMINATION

8A 250V, 16A 125V, 1 HP 125-250V

screw terminals wire leads

Single Pole

ON-NONE-OFF **DA284** **DA285**

Double Pole

ON-NONE-OFF **DK284** **DK285**

10A 250V, 20A 125V, 1 1/2 HP 125-250V

screw terminals wire leads

Single Pole

ON-NONE-OFF **EA204** **EA205**

Double Pole

ON-NONE-OFF **EK204** **EK205**

2 ACTUATOR STYLE¹

BALL STYLE TOGGLE

unsealed *toggle length* *bushing length*
32 0.500 0.343

BAT STYLE TOGGLE

unsealed *toggle length* *bushing length*
73 0.687 0.465

NOTES

¹ Additional toggle lengths available. Consult factory for details.