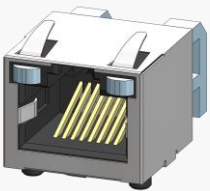


About Amphenol Commercial Products

Amphenol's commercial connector products are used in a variety of end user applications including networking, telecom, server & computer, storage & HDD, consumer electronics and entertainment, professional audio & Industrial & Military/Aerospace.

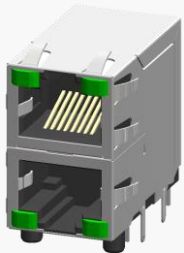
Related Products

RJSSE

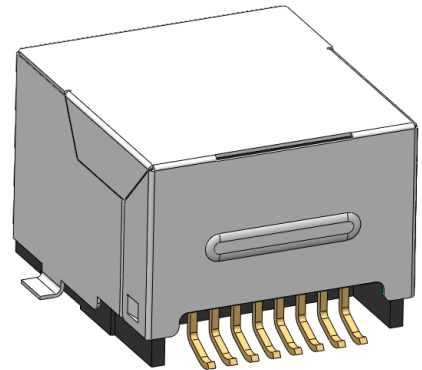
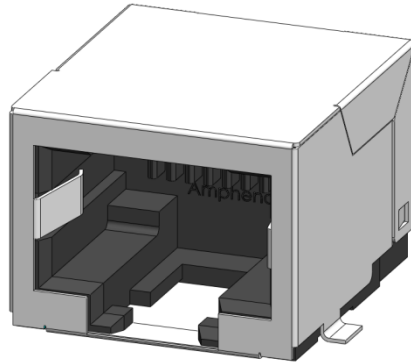


P/N RJSSE-5081 SHOWN
SINGLE PORT, 8 POSITION,
WITH SHIELD AND LIGHT PIPE

RJSAR



P/N RJSAR-5385-02 SHOWN
STACKED 2X1, 8 POSITION, WITH
SHIELD AND LEDs



P/N RJLSE-41181-01 SHOWN
SINGLE PORT REGULAR MOUNT,
STANDARD SHIELD WITH SMT TAB

OVERVIEW

This product specification defines the general use and performance parameters for Amphenol's RJLSE series of modular jacks.

Availability: Single, right angle connectors with a variety of shielding options.

USAGE

The RJLSE surface mount modular jacks with superior EMI performance supports Ethernet Protocols. Shielding available for increased EMI performance.

APPLICATIONS

Intended for use in applications such as:

Data

- Storage
- Servers
- Routers
- Switches
- Hubs

Networking & Telecom

- 5G Wireless
- Telephones
- Modems
- Fax Machines

Consumer Goods

- Security Systems
- Set Top Boxes
- Video Game Systems
- PCs, Laptops
- Copiers, Printers

Medical

- Analysis Equipment
- Mass Spectrometers

Industrial and Instrumentation

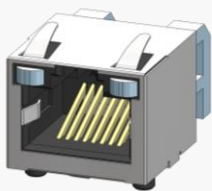
- Uninterruptible Power Supply (UPS)
- ATMs
- Vending Machines
- POS Terminals
- Industrial IoT Platforms

About Amphenol Commercial Products

Amphenol's commercial connector products are used in a variety of end user applications including networking, telecom, server & computer, storage & HDD, consumer electronics and entertainment, professional audio & Industrial & Military/Aerospace.

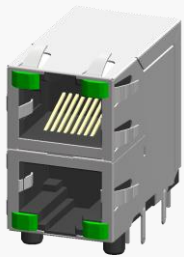
Related Products

RJSSE



P/N RJSSE-5081 SHOWN
SINGLE PORT, 8 POSITION,
WITH SHIELD AND LIGHT PIPE

RJSAR



P/N RJSAR-5385-02 SHOWN
STACKED 2X1, 8 POSITION, WITH
SHIELD AND LEDs

ELECTRICAL CHARACTERISTICS

Contact Resistance	20mΩ maximum
Insulation Resistance	500 MΩ minimum at 500V DC for 2 minutes maximum
Current Rating	1.5 Amps per contact
Voltage Rating	125 Volts AC
DWV	1000 VAC, 60 HZ. 1 min

Supports PoE, PoE+, and PoE++ per IEEE PoE standards
IP20 rated per IEC 60529

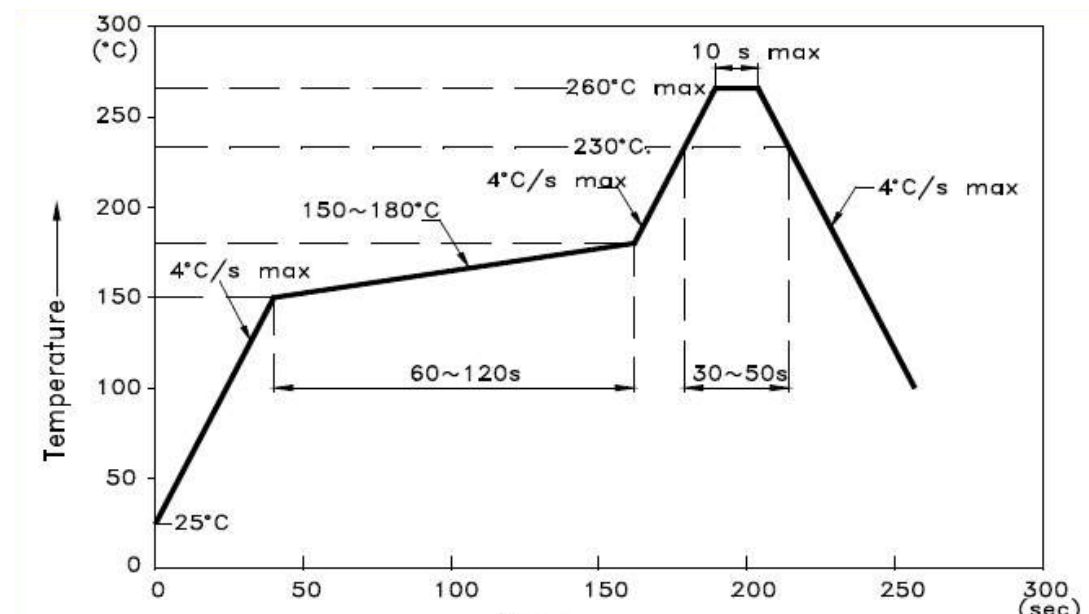
MECHANICAL CHARACTERISTICS

Mating Connector Insertion Force	5.0 lbs maximum
Mating Connector Pull Retention Force	20.0 lbs minimum
Durability	750 mating and unmating cycles for 50μ" gold plating
Recommended Soldering Temperature	Lead free reflow soldering up to 260°C for 10 seconds (refer to reflow profile below, maximum of 3 reflow passes permitted)
Operating Temperature	-40°C to +70°C

UL File#: E135615

Connectors are suitable for IR Reflow.

Refer to J-STD-033 for safe handling procedures for SMDs.



Amphenol Canada Corp.
605 Milner Avenue
Toronto, Ontario, Canada M1B 5X6

Copyright © Amphenol Corporation 2018 · All rights reserved

www.amphenolcanada.com (www.amphenol-icc.com)
(416) 291-4401
sales@amphenolcanada.com

Page 2 of 3

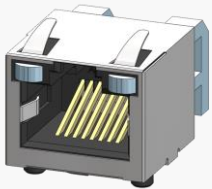
Amphenol

About Amphenol Commercial Products

Amphenol's commercial connector products are used in a variety of end user applications including networking, telecom, server & computer, storage & HDD, consumer electronics and entertainment, professional audio & Industrial & Military/Aerospace.

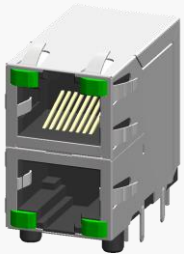
Related Products

RJSSE



P/N RJSSE-5081 SHOWN
SINGLE PORT, 8 POSITION,
WITH SHIELD AND LIGHT PIPE

RJSAR



P/N RJSAR-5385-02 SHOWN
STACKED 2X1, 8 POSITION, WITH
SHIELD AND LEDs

MATERIAL REQUIREMENTS

RJLSE connectors are RoHS compliant.

Unless otherwise specified, the materials for each component shall be:

Insulator	High temperature thermoplastic, flammability rating UL 94V-0
Contacts	-Phosphor Bronze hard temper with gold thickness options (6μ", 15μ" 30μ", 50μ") over 50μ" minimum Nickel on contact mating area. Gold flash with Palladium Nickel is also available. -100μ" minimum matte Tin over Nickel on soldering tail
Shield	Copper alloy, Nickel or matte Tin plated

MOISTURE LEVEL SENSITIVITY

The Moisture Sensitivity Level for RJLSE connector is MSL-2a.

AVAILABLE DOCUMENTS

Below is a list of the most popular standard sales drawings:

Contact our website, sales, or an authorized Amphenol representation for additional drawings.

RJLSE-4X08X-01T	Single port, surface mount, no shield, no LEDs
RJLSE-43687-01	Single port, surface mount, no shield, no LEDs
RJHSE-X38X-08	Single port, surface mount, no shield, no LEDs
RJLSE-41382-01T	Single port, surface mount, shield with PCB tabs, no LEDs
RJLSE-6X161-01T	Single port, surface mount, shield without EMI tabs, no LEDs