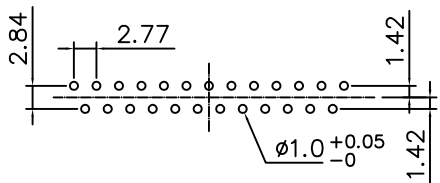
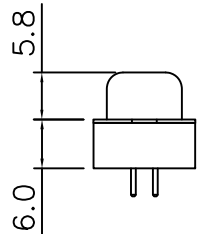
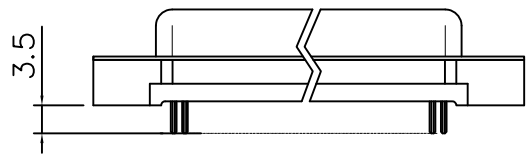
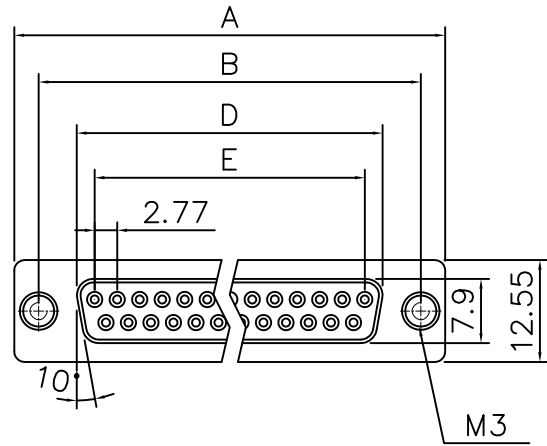


This document is the property of Amphenol Corporation and is delivered on the express condition that it is not to be disclosed, reproduced or used, in whole or in part, for manufacture or sale by anyone other than Amphenol Corporation without its prior consent, & that no right is granted to disclose or to use any information in this document.

Customer drawing



RECOMMENDED PCB LAYOUT
TOLERANCE: $\pm 0.05\text{mm}$



Dimensions

Positions	A	B	D	E
9	30.81	24.99	16.33	11.08
15	39.20	33.30	24.70	19.39
25	53.05	47.04	38.40	33.24
37	69.40	63.50	54.80	49.86

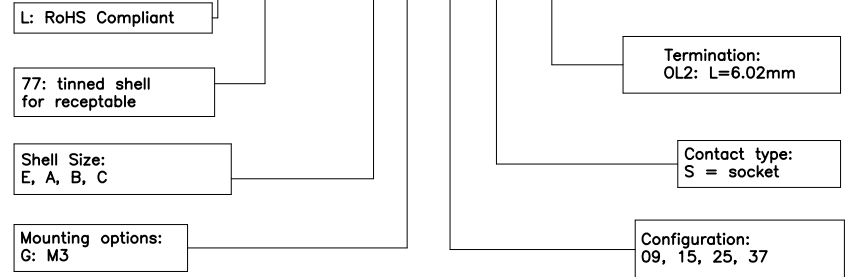
REVISIONS				
SYM	ECN	DESCRIPTION	DATE	APPROVED
1	HK--	First Release Drawing	01/22/15	IP

D-SUB TECHNICAL DATA

SHELL : Steel, 100u" Tin over 50u" min nickel over 50u" min Copper
 BODY : PBT, UL 94V-0 ,Black
 CONTACTS : Copper alloy
 Gold flash over 50u" nickel on mating area
 100u" tin over 50u" nickel on solder area
 REAR NUT: Copper alloy, Nickel Plated.
 ELECTRICAL: Voltage Rating 250 V RMS 60Hz
 Current Rating 3 AMP
 Withstanding Voltage >1000 V RMS 60Hz for 1 minute
 Insulation Resistance >1000 M Ohms
 Contact Resistance 20 mOhms max.
 MARKING: Amphenol...(Series No.)
 Commercial Reference
 Manufacturing Date

PRODUCT CODE

L 77 TS X G XX S OL2



UNLESS OTHERWISE SPECIFIED TOLERANCES	APPROVAL		DATE
	U.S.	METRIC	
X +/-	0.38		DRAWN Simon 01/22/15
.X +/-	0.25		CHECKED Tony Tang 01/22/15
.XX +/-	0.13		CHECKED
FRACTIONS +/-		5'	
ANGLES +/-			
FOR MATERIALS AND FINISHES SEE NOTES	DRAWING FILE :		
REMOVE SHARP EDGES	ANGLE OF PROJECTION		
DIMENSIONS			
U.S.	INCHES		
METRIC	MM		

Amphenol		Amphenol East Asia Limited
TITLE		
Stamped and formed contact, TS series		
SIZE	DRAWING NO.	REV.
A4	L77TSXGXXSOL2	1
SCALE	NONE	SHEET 1 OF 1