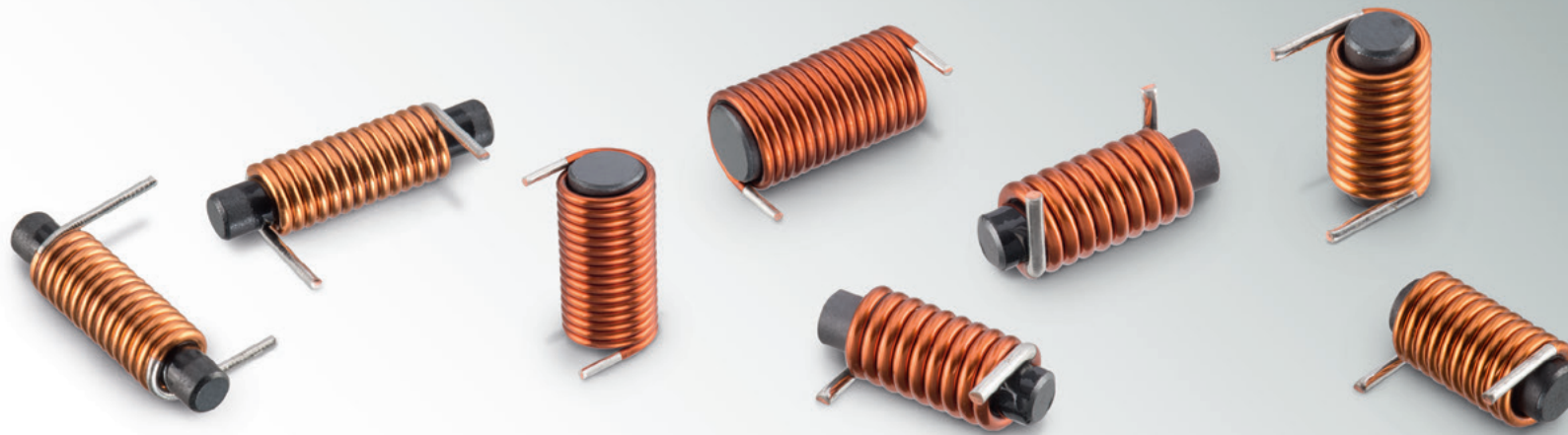




DESIGN KIT

WE-RCIT Rodcore Inductor THT



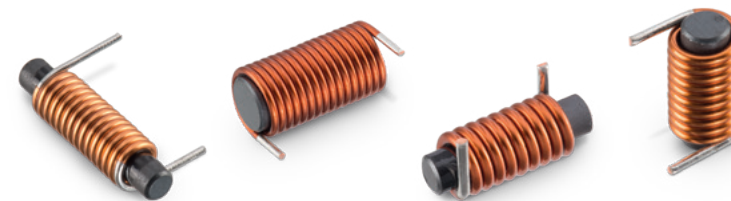
TECHNICAL DATA:

L: 2.0 – 10.0 μ H
I_r: 2.5 – 15 A
R_{DC}: 1.7 – 33 m Ω
Freq: 0.01 – 90 MHz

Order Code 784 713
Version 1.0

DESIGN KIT

WE-RCIT Rodcore Inductor THT



784 711 002 0	784 711 102 0	784 712 102 0	784 713 102 0	784 712 006 0
L: 2 μ H	L: 2 μ H	L: 2 μ H	L: 2 μ H	L: 6 μ H
I _r : 2.5 A	I _r : 5 A	I _r : 10 A	I _r : 15 A	I _r : 2.5 A
R _{DC} : 11 m Ω	R _{DC} : 6.5 m Ω	R _{DC} : 3.8 m Ω	R _{DC} : 1.7 m Ω	R _{DC} : 22 m Ω
Freq: 236.7 MHz	Freq: 149.6 MHz	Freq: 95 MHz	Freq: 178.7 MHz	Freq: 95 MHz
784 712 106 0	784 713 106 0	784 713 206 0	784 711 110 0	784 712 110 0
L: 6 μ H	L: 6 μ H	L: 6 μ H	L: 10 μ H	L: 10 μ H
I _r : 5 A	I _r : 10 A	I _r : 15 A	I _r : 2.5 A	I _r : 5 A
R _{DC} : 11.7 m Ω	R _{DC} : 15.3 m Ω	R _{DC} : 3.5 m Ω	R _{DC} : 33 m Ω	R _{DC} : 15.1 m Ω
Freq: 80 MHz	Freq: 149.6 MHz	Freq: 80 MHz	Freq: 63.7 MHz	Freq: 120 MHz
784 713 110 0	784 713 210 0			
L: 10 μ H	L: 10 μ H			
I _r : 10 A	I _r : 15 A			
R _{DC} : 8.8 m Ω	R _{DC} : 5.7 m Ω			
Freq: 56.6 MHz	Freq: 42.4 MHz			

EMC COMPONENTS | **INDUCTORS** | TRANSFORMERS | RF COMPONENTS | CIRCUIT PROTECTION | EMC SHIELDING MATERIAL | LEDs | CONNECTORS | SWITCHES | ASSEMBLY TECHNIQUE | REDCUBE TERMINALS | CAPACITORS

Important information: Würth Elektronik's design kits contain reference components. These components correspond with the current product development status on the day of supply. Exchange of the reference components to components with up-to-date product development status is not carried out automatically. No liability is taken for the use of these reference components. Therefore, please request new samples prior to releases for series production and product release.

Please check datasheets on www.we-online.com for specifications. Würth Elektronik eiSos GmbH & Co. KG, EMC & Inductive Solutions. © 2018

www.we-online.com

All products
ex stock!