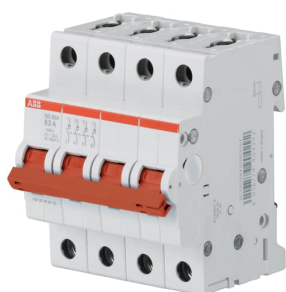


PRODUCT-DETAILS

SD204/40

SD204/40 Switch Disconnecter 4P, 40A



General Information

Extended Product Type	SD204/40
Product ID	2CDD284101R0040
EAN	4016779904278
Catalog Description	SD204/40 Switch Disconnecter 4P, 40A
Long Description	SD204/40 Switch Disconnecter 4P, 40A

Ordering

EAN	4016779904278
Minimum Order Quantity	1 piece
Customs Tariff Number	85369095

Dimensions

Product Net Width	70 mm
Product Net Height	88 mm
Product Net Depth / Length	69 mm
Product Net Weight	0.34 kg

Container Information

Package Level 1 Units	1 piece
-----------------------	---------

Package Level 1 Width	92 mm
Package Level 1 Height	80 mm
Package Level 1 Depth / Length	78 mm
Package Level 1 Gross Weight	0.36 kg
Package Level 1 EAN	4016779904759
Package Level 2 Units	24 piece
Package Level 2 Width	275 mm
Package Level 2 Height	210 mm
Package Level 2 Depth / Length	395 mm
Package Level 2 Gross Weight	9.04 kg
Package Level 2 EAN	4016779905237

Environmental

Ambient Air Temperature	Operation -25 ... +55 °C Storage -40 ... +70 °C
Resistance to Vibrations acc. to IEC 60068-2-6	5g, 20 cycles at 5 ... 150 ... 5 Hz with load 0.8 In
Resistance to Shock acc. to IEC 60068-2-27	25g / 2 shocks / 13 ms
RoHS Status	Following EU Directive 2011/65/EU

Additional Information

Actuator Type	Toggle
Connecting Capacity	Busbar 10 / 10 mm ² Flexible 0.75 ... 16 mm ² Rigid 0.75 ... 25 mm ² Stranded 0.75 ... 25 mm ²
Degree of Protection	IP20
Housing Material	Insulation Group I, RAL 7035
Mounting Position	Any
Number of Poles	4
Operational Voltage	Maximum 462 V AC Minimum 12 V AC
Overvoltage Category	III
Pollution Degree	3
Product Main Type	SD200
Product Name	Switch Disconnectors
Rated Current (I _n)	40 A
Rated Frequency (f)	50 Hz 60 Hz
Rated Impulse Withstand Voltage (U _{imp})	4 kV (6.2 kV @ sea level) (5.0 kV @ 2000 m)
Rated Operational Voltage	440 V AC
Recommended Screw Driver	Pozidriv 2
Remarks	IP40 in enclosure with cover
RoHS Date	20170302
Standards	IEC/EN 60947-3
Terminal Type	Screw Terminals
Tightening Torque	2.8 N·m

Certificates and Declarations (Document Number)

Data Sheet, Technical Information	2CDC441015D0201
Declaration of Conformity - CE	2CDK440034D2703
Environmental Information	2CDK400618D0201
Instructions and Manuals	2CDC441015D0201
RoHS Information	2CDK440036D0202

Classifications

ETIM 4	EC001545 - Main switch for distribution board
ETIM 5	EC001545 - Main switch for distribution board
ETIM 6	EC001545 - Main switch for distribution board
ETIM 7	EC001545 - Main switch for distribution board
Object Classification Code	Q
WEEE Category	5. Small Equipment (No External Dimension More Than 50 cm)
eClass	7.0 27142301

Accessories

Identifier	Description	Type	Quantity	Unit Of Measure
2CCA880100R0001	CMS-100PS Sensor	CMS-100PS	1	piece
2CCA880101R0001	CMS-101PS Sensor	CMS-101PS	1	piece
2CCA880102R0001	CMS-102PS Sensor	CMS-102PS	1	piece
2CDS200909R0001	S2C-A1 - Shunt Trip	S2C-A1	1	piece
2CDS200909R0002	S2C-A2 - Shunt Trip	S2C-A2	1	piece
2CDS200912R0001	S2C-H6R - Auxiliary Contact	S2C-H6R	1	piece
2CDS200918R0001	S2C-NT - Hand Operated Neutral	S2C-NT	1	piece
2CDS200922R0001	S2C-S/H6R - Signal / Auxiliary Contact	S2C-S/H6R	1	piece
2CDS200936R0001	S2C-H11L - Auxiliary Contact	S2C-H11L	1	piece
2CDS200936R0002	S2C-H20L - Auxiliary Contact	S2C-H20L	1	piece
2CDS200936R0003	S2C-H02L - Auxiliary Contact	S2C-H02L	1	piece
2CDS200946R0001	S2C-H6-11R - Auxiliary Contact	S2C-H6-11R	1	piece
2CDS200946R0002	S2C-H6-20R - Auxiliary Contact	S2C-H6-20R	1	piece
2CDS200946R0003	S2C-H6-02R - Auxiliary Contact	S2C-H6-02R	1	piece
2CDS200970R0001	S2C-H01 - Auxiliary Contact	S2C-H01	1	piece
2CDS200970R0002	S2C-H10 - Auxiliary Contact	S2C-H10	1	piece
2CSS200911R0001	S2C-UA 12 DC - Undervoltage release	S2C-UA 12 DC	1	piece
2CSS200911R0002	S2C-UA 24 AC - Undervoltage release	S2C-UA 24 AC	1	piece
2CSS200911R0003	S2C-UA 48 AC - Undervoltage release	S2C-UA 48 AC	1	piece
2CSS200911R0004	S2C-UA 110 AC - Undervoltage release	S2C-UA 110 AC	1	piece
2CSS200911R0005	S2C-UA 230 AC - Undervoltage release	S2C-UA 230 AC	1	piece
2CSS200911R0006	S2C-UA 400 AC - Undervoltage release	S2C-UA 400 AC	1	piece
2CSS200911R0007	S2C-UA 24 DC - Undervoltage release	S2C-UA 24 DC	1	piece
2CSS200911R0008	S2C-UA 48 DC - Undervoltage release	S2C-UA 48 DC	1	piece
2CSS200911R0009	S2C-UA 110 DC - Undervoltage release	S2C-UA 110 DC	1	piece
2CSS200911R0010	S2C-UA 230 DC - Undervoltage release	S2C-UA 230 DC	1	piece
2CSS200998R0001	S2C-BP - Mechanical tripping device	S2C-BP	1	piece
2CSS200999R0001	S2C-EST - Plug-in base	S2C-EST	1	piece
2CSS201997R0013	S2C-CM1 - Motor operating device	S2C-CM1	1	piece
2CSS203997R0013	S2C-CM2/3 - Motor operating device	S2C-CM2/3	1	piece
2CSS204997R0013	S2C-CM4 - Motor operating device	S2C-CM4	1	piece
GHS2001901R0003	S2C-DH - Mechanical Accessories	S2C-DH	1	piece

Categories

Low Voltage Products and Systems → Modular DIN Rail Products → Command and Signalling devices → Switch Disconnectors

