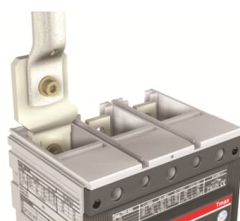


PRODUCT-DETAILS

# KIT ES T7-T7M-X1 4pcs

# KIT ES T7-T7M-X1 4pcs



## General Information

|                       |   |
|-----------------------|---|
| Extended Product Type | KIT ES T7-T7M-X1 4pcs                             |
| Product ID            | 1SDA063109R1                                      |
| EAN                   | 8015644656522                                     |
| Catalog Description   | KIT ES T7-T7M-X1 4pcs                             |
| Long Description      | EXETENDED FRONT TERMINALS DISTANCE 4pcs T7-T7M-X1 |

## Ordering

|                        |               |
|------------------------|---------------|
| EAN                    | 8015644656522 |
| Minimum Order Quantity | 1 piece       |
| Customs Tariff Number  | 85389099      |

## Dimensions

|                    |      |
|--------------------|------|
| Product Net Weight | 1 kg |
|--------------------|------|

## Container Information

|                       |               |
|-----------------------|---------------|
| Package Level 1 Units | 1 piece       |
| Package Level 1 EAN   | 8015644656522 |

### Additional Information

|                            |                          |
|----------------------------|--------------------------|
| Configuration Type         | Loose or configurable    |
| Number of Poles            | 4                        |
| Product Main Type          | Accessories for Tmax T   |
| Product Name               | Accessory                |
| Product Type               | ACC                      |
| Standards                  | IEC                      |
| Suitable For               | T7, X1                   |
| Suitable for Product Class | SACE Emax<br>SACE Tmax T |

### Certificates and Declarations (Document Number)

|                                   |                 |
|-----------------------------------|-----------------|
| Data Sheet, Technical Information | 1SDC210015D0201 |
| Declaration of Conformity - CE    | 1SDL000165R0001 |
| Environmental Information         | 1SDC210015D0201 |
| Instructions and Manuals          | 1SDC210015D0201 |
| RoHS Information                  | 1SDL000201R0001 |

### Classifications

|                            |  |
|----------------------------|--|
| ETIM 6                     | EC002019 - Connection vane/phase spreader                  |
| ETIM 7                     | EC002019 - Connection vane/phase spreader                  |
| Object Classification Code | Q  |
| WEEE Category              | 5. Small Equipment (No External Dimension More Than 50 cm) |

### Categories

Low Voltage Products and Systems → Circuit Breakers → Air Circuit Breakers → Accessories for Emax

Low Voltage Products and Systems → Circuit Breakers → Moulded Case Circuit Breakers → Accessories for Tmax T

