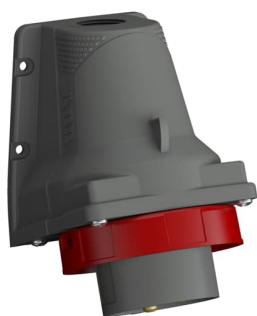


---

PRODUCT-DETAILS

# 416EBS6W

## Wall mounted inlets, 3P+N+E, 16A, 200/346 ... 240/415 V




---

### General Information

Extended Product Type	416EBS6W
Product ID	2CMA101183R1000
EAN	7392696011839
Catalog Description	Wall mounted inlets, 3P+N+E, 16A, 200/346 ... 240/415 V
Long Description	Wall mounted inlet, 3P+N+E, 16A, 200/346 ... 240/415 V Clock Position Of Grounding Contact 6 hour Color code Red

---

### Ordering

E-Number (Sweden)	E2417549
E-Number (Finland)	2420144
E-Number (Norway)	1540735
EAN	7392696011839
Country of Origin	Czech Republic (CZ)
Minimum Order Quantity	5 piece

---

### Dimensions

Product Net Width	89 mm
Product Net Height	111 mm

Product Net Length	140 mm
Product Net Depth / Length	140 mm
Product Net Weight	0.25 kg

### Container Information

Package Level 1 Width	134 mm
Package Level 1 Depth / Length	177 mm
Package Level 1 Height	467 mm
Package Level 1 Gross Weight	1.25 kg
Package Level 1 EAN	7392696018807
Package Level 1 Units	box 5 piece

### Technical UL/CSA

Tightening Torque UL/CSA	7.1 in-lb
-----------------------------	-----------

### Certificates and Declarations (Document Number)

Declaration of Conformity - CE	2CMC700005D0001
Declaration	2CMC700005D0001
Environmental Information	2CMC000056M0000
RoHS Information	2CMC700005D0001
SEMKO Certificate	1616286
REACH Declaration	2CMC700005D0001

### Additional Information

Additional Information	3P+N+E
Ambient Temperature	-25 ... 40 °C
Cable Cross-Section	1 ... 2.5 mm <sup>2</sup>
Cable Diameter	25 mm
Color	Red
Connection Type	Screw Clamp
Degree of Protection	IP67
Enclosure Material	Plastic (PA)
Frequency (f)	50 Hz 60 Hz
Function	Wall mounted inlet
Housing Material	Plastic (PA)
Invoice Description	Ind. P&S#416EBS6W
Material	Plastic
Mounting Holes	40x63,5
Mounting Type	Angled

Number of Poles	5
Order Multiple	5 piece
Product Main Type	EBS
Product Name	Wall mounted inlet
Protection Type	Watertight
Rated Current ( $I_n$ )	16 A
Rated Frequency (f)	50...60 Hz
Rated Voltage ( $U_r$ )	200/346 ... 240/415 V
Recommended Screw Driver	PH2
Standards	IEC 60309-1, -2
Suitable for Product Class	IEC Industrial Plugs and Sockets
Instructions and Manuals	2CMC700014C0016
RAL Number	RAL 7012 - Basalt Grey

---

## Classifications

eClass	27440519
UNSPSC	39120000

---

## Technical

Wire Size	14 ... 12 AWG
Tightening Torque	0.8 N·m

---

## Categories

Low Voltage Products and Systems → Industrial Plugs and Sockets → Easy & Safe → Surface Inlets

