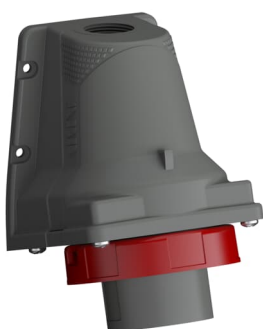


PRODUCT-DETAILS

332EBS6W

Wall mounted inlets, 3P+E, 32A, 380 ... 415 V



General Information

Extended Product Type	332EBS6W
Product ID	2CMA101197R1000
EAN	7392696011976
Catalog Description	Wall mounted inlets, 3P+E, 32A, 380 ... 415 V
Long Description	Wall mounted inlet, 3P+E, 32A, 380 ... 415 V Clock Position Of Grounding Contact 6 hour Color code Red

Ordering

E-Number (Sweden)	E2417592
EAN	7392696011976
Country of Origin	Czech Republic (CZ)
Minimum Order Quantity	5 piece

Dimensions

Product Net Width	89 mm
Product Net Height	105 mm
Product Net Length	150 mm
Product Net Depth /	150 mm

Length

Product Net Weight	0.27 kg
--------------------	---------

Container Information

Package Level 1 Width	134 mm
Package Level 1 Depth / Length	177 mm
Package Level 1 Height	467 mm
Package Level 1 Gross Weight	1.35 kg
Package Level 1 EAN	7392696019033
Package Level 1 Units	box 5 piece

Technical UL/CSA

Tightening Torque UL/CSA	10.6 in-lb
-----------------------------	------------

Certificates and Declarations (Document Number)

Declaration of Conformity - CE	2CMC700005D0001
Declaration	2CMC700005D0001
Environmental Information	2CMC000056M0000
RoHS Information	2CMC700005D0001
SEMKO Certificate	1616288
REACH Declaration	2CMC700005D0001

Additional Information

Additional Information	3P+E
Ambient Temperature	-25 ... 40 °C
Cable Cross-Section	2.5 ... 6 mm ²
Cable Diameter	25 mm
Color	Red
Connection Type	Screw Clamp
Degree of Protection	IP67
Enclosure Material	Plastic (PA)
Frequency (f)	50 Hz 60 Hz
Function	Wall mounted inlet
Housing Material	Plastic (PA)
Invoice Description	Ind. P&S#332EBS6W
Material	Plastic
Mounting Holes	40x63,5
Mounting Type	Angled
Number of Poles	4
Order Multiple	5 piece

Product Main Type	EBS
Product Name	Wall mounted inlet
Protection Type	Watertight
Rated Current (I_n)	32 A
Rated Frequency (f)	50...60 Hz
Rated Voltage (U_r)	380 ... 415 V
Recommended Screw Driver	PH2
Standards	IEC 60309-1, -2
Suitable for Product Class	IEC Industrial Plugs and Sockets
Instructions and Manuals	2CMC700014C0016
RAL Number	RAL 7012 - Basalt Grey

Classifications

eClass	27440519
UNSPSC	39120000

Technical

Wire Size	12 ... 10 AWG
Tightening Torque	1.2 N·m

Categories

Low Voltage Products and Systems → Industrial Plugs and Sockets → Easy & Safe → Surface Inlets

